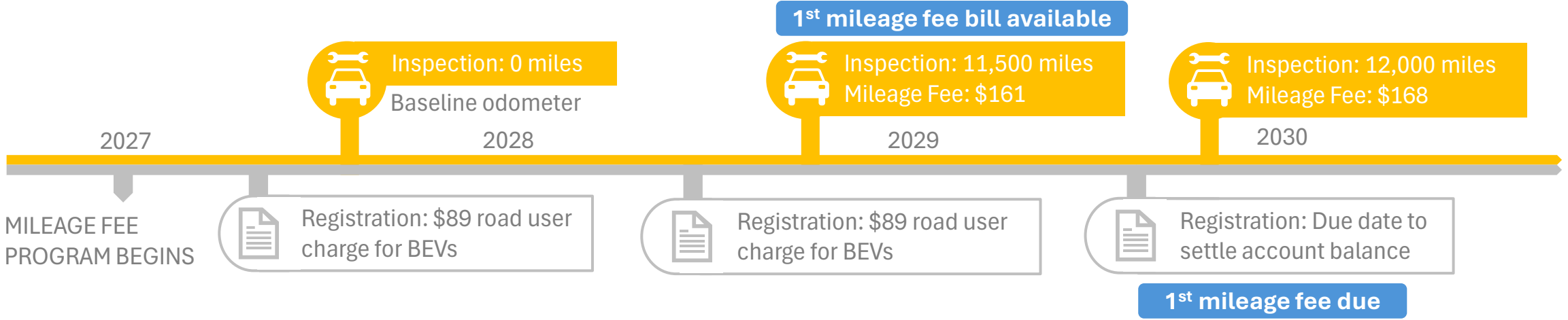
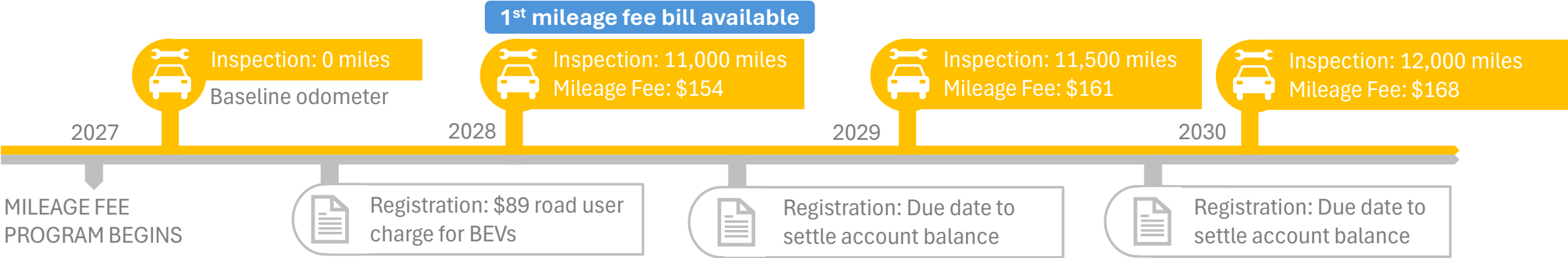
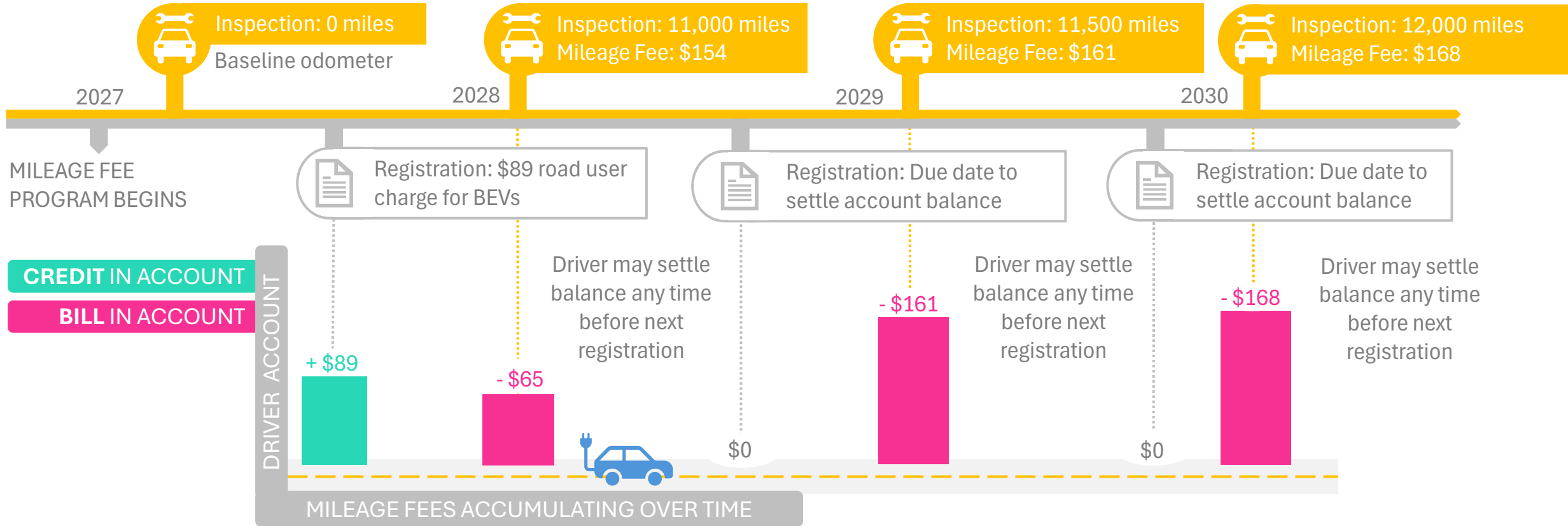


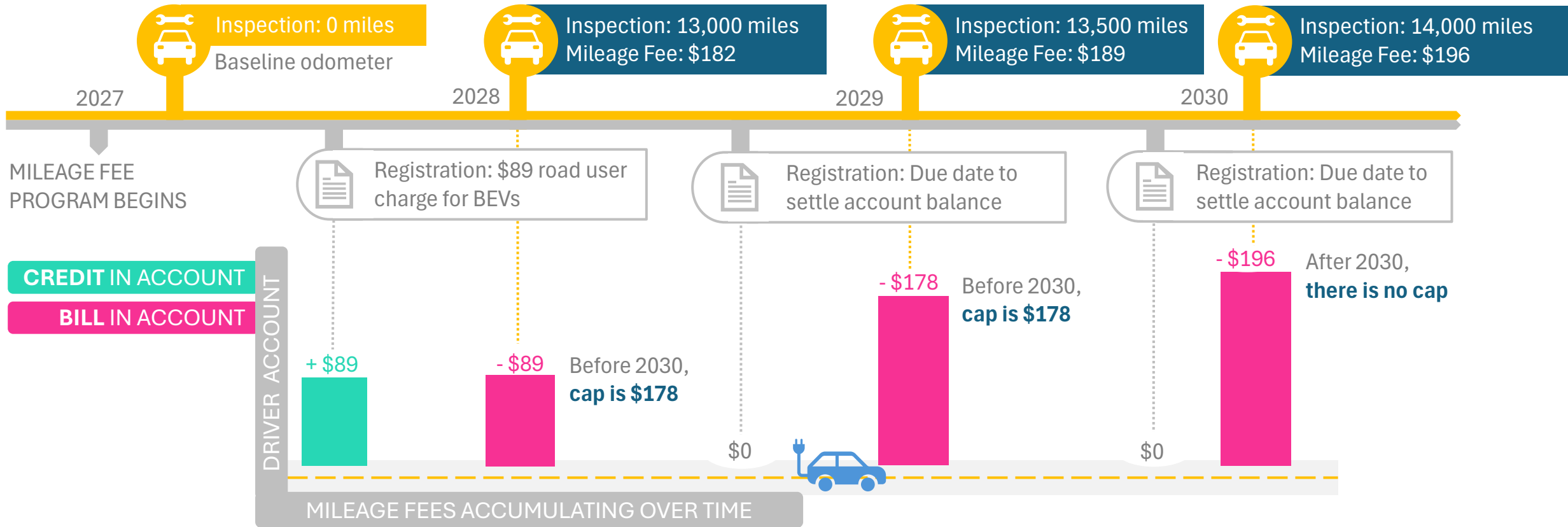
How will drivers pay mileage fees?



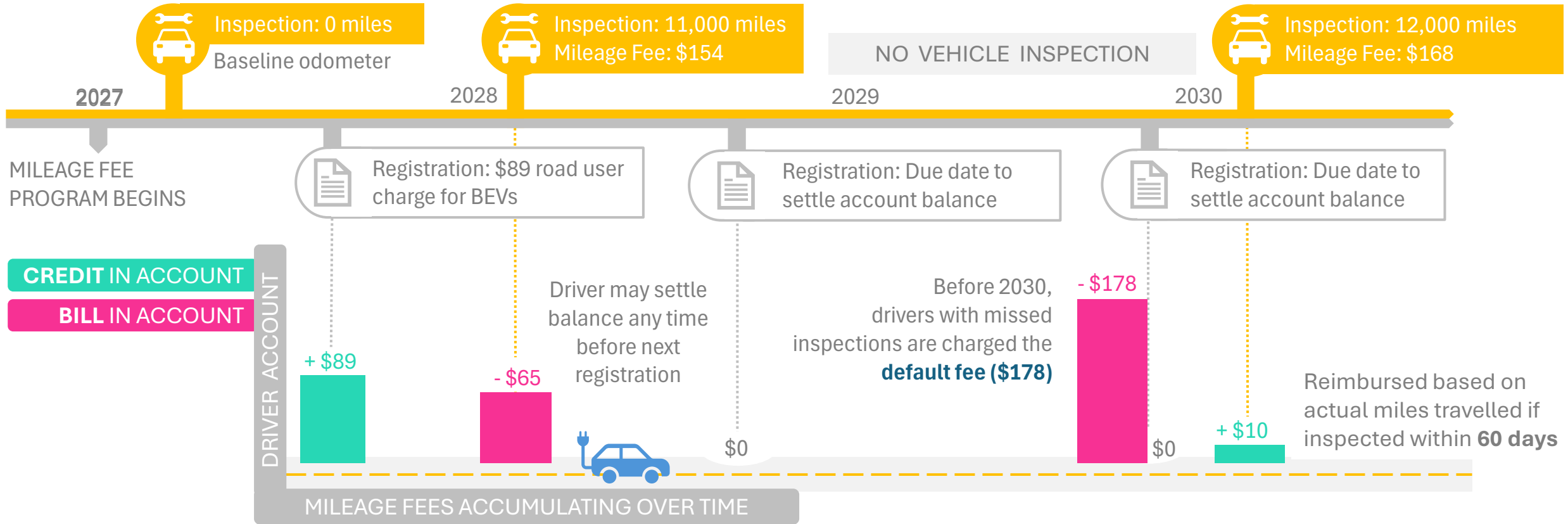
Example: 1-year registration + typical driver (first inspection before registration)



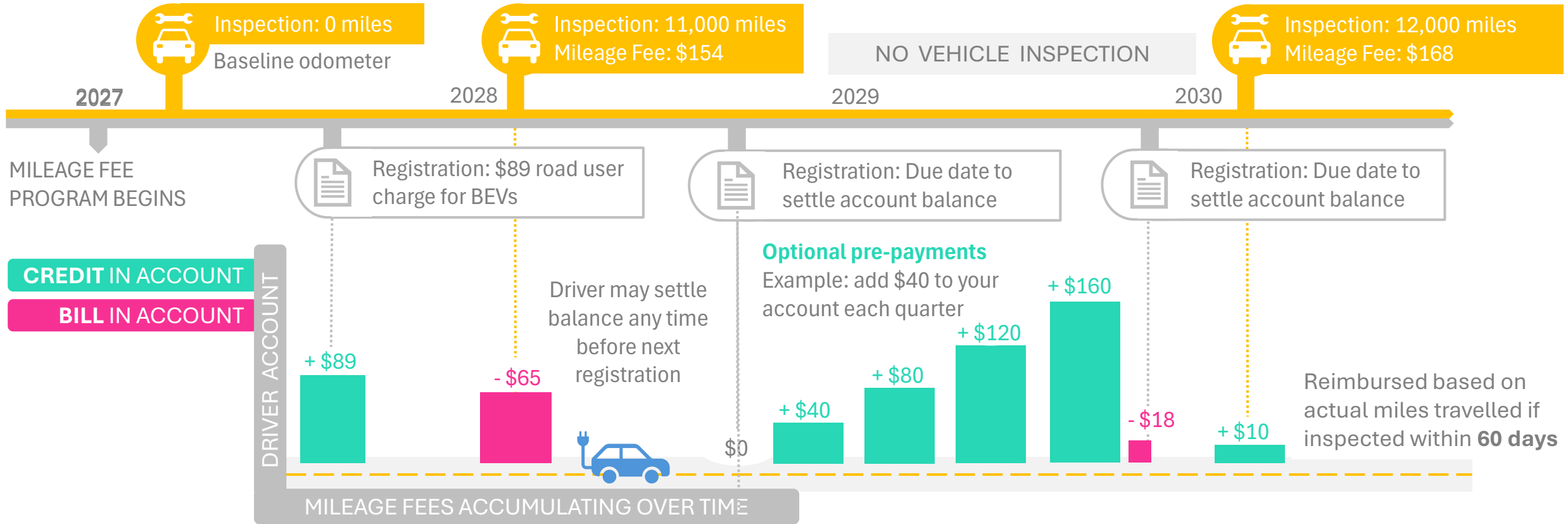
Example: 1-year registration + high-mileage driver (first inspection before registration)



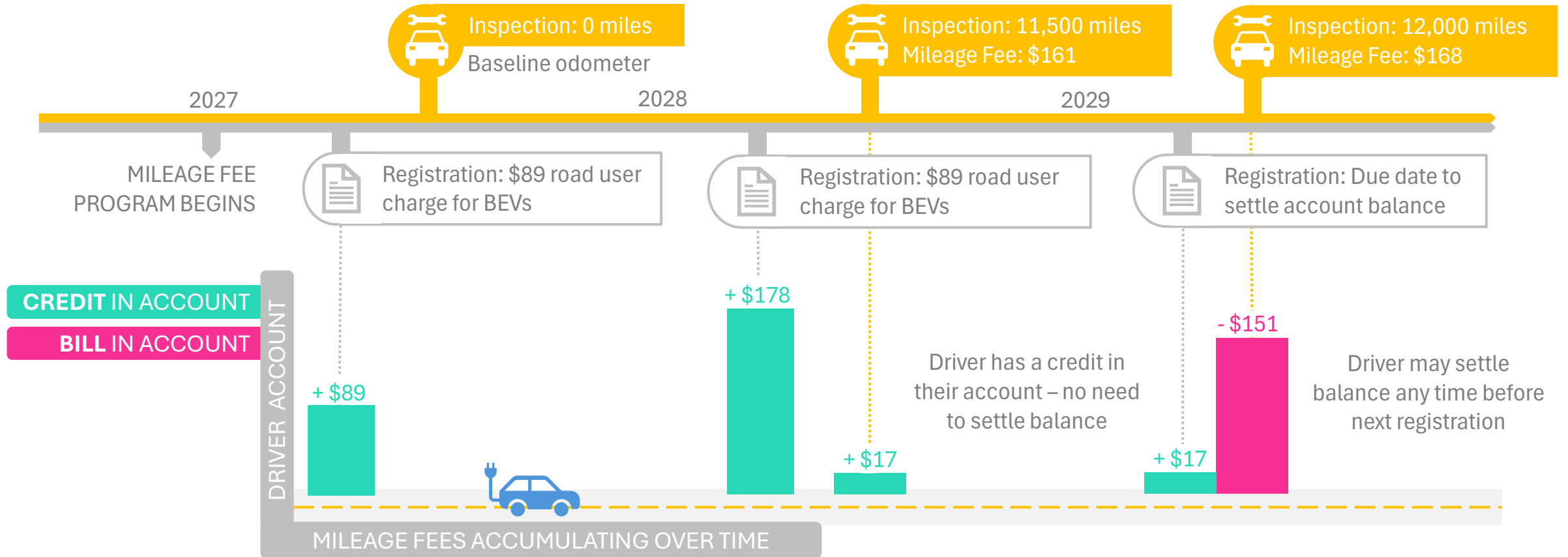
Example: 1-year registration + misses an inspection (first inspection before registration)



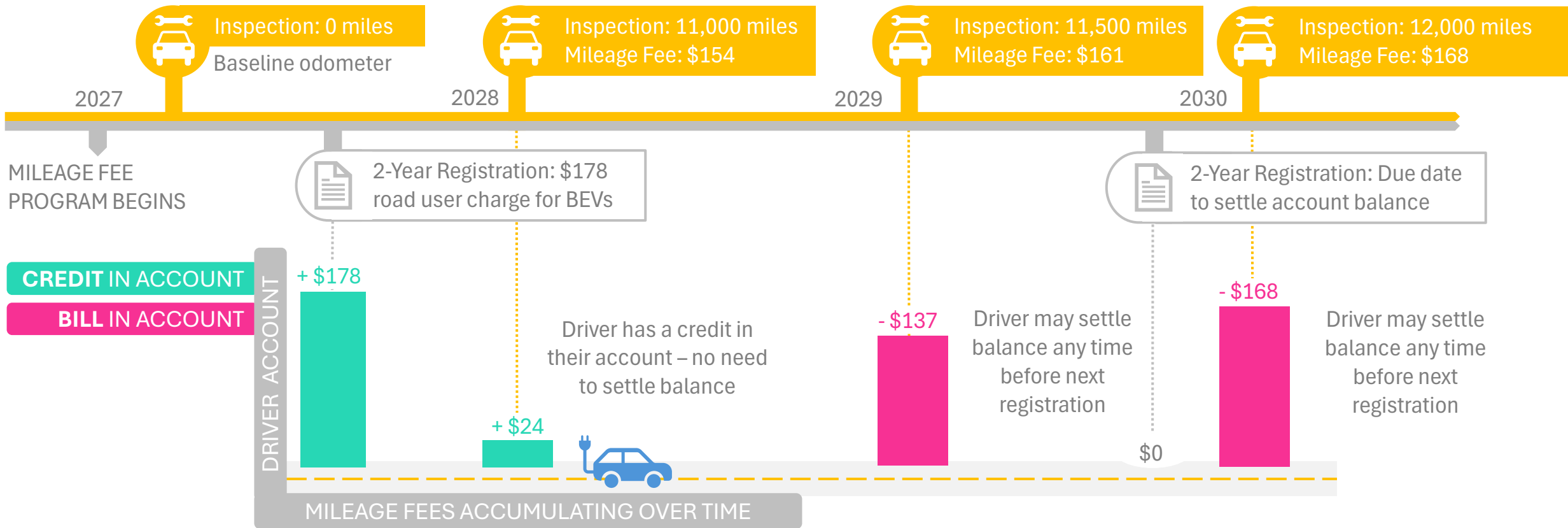
Example: 1-year registration + pre-payment + misses an inspection (first inspection before registration)



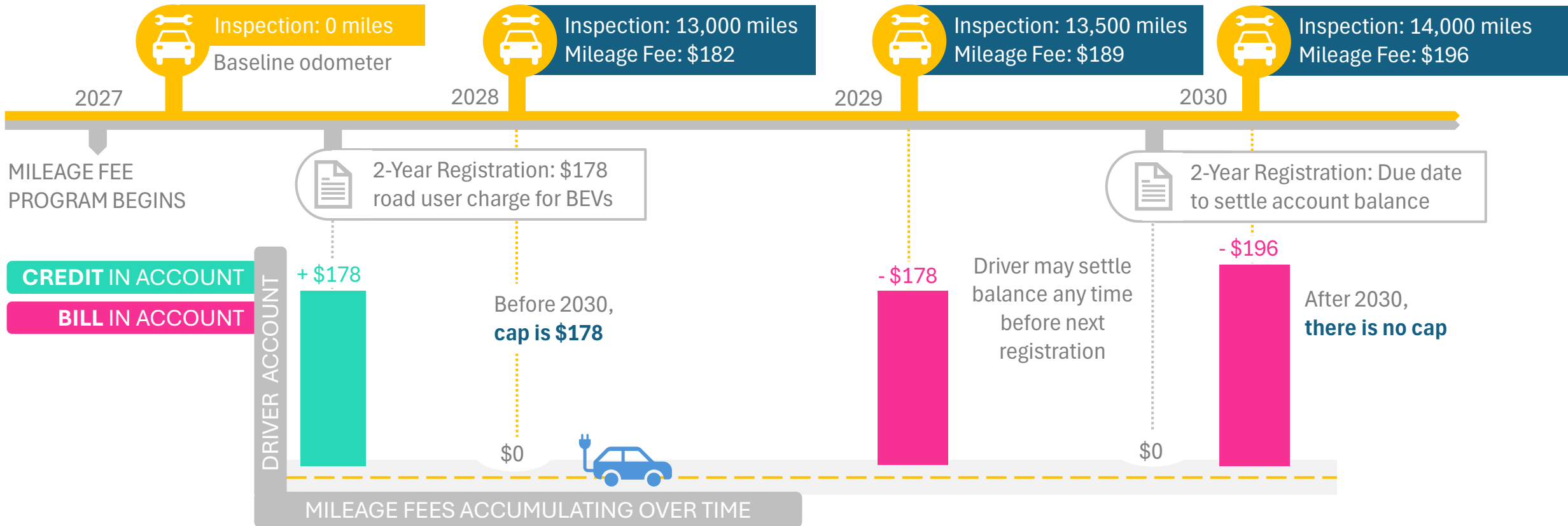
Example: 1-year registration + typical driver (first inspection after registration)



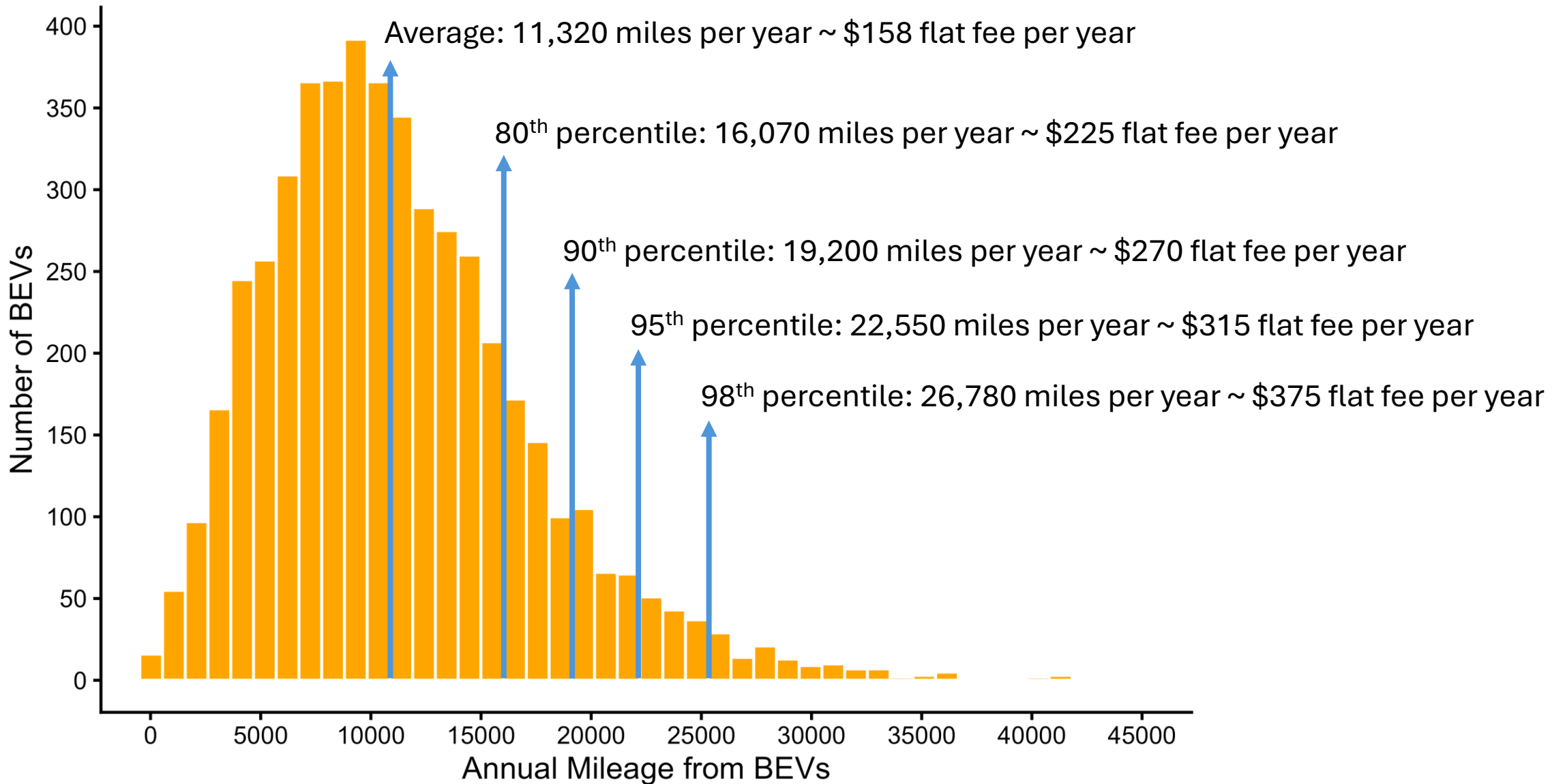
Example: 2-year registration + typical driver (first inspection before registration)



Example: 2-year registration + high-mileage driver (first inspection before registration)



Vehicle mileage varies widely for currently registered BEVs



Vehicle mileage varies widely for all currently registered vehicles

