

PROJECTED NETWORK
CONDITIONS

JEREMY REED,
CHIEF ENGINEER

AGENCY OF TRANSPORTATION

PAVEMENT DATA COLLECTION

■ Data Collected

- Ride
- Rut
- Cracking
 - Structural
 - Environmental

- Network Level Data
- 64,000 0.05 mile sections
- 2 Year collection cycle
- NHS every year

COMPOSITE INDEX

Pavement Composite Index

- Used for reporting network conditions
 - Combines the four distress indices
 - Ride (functional)
 - Rut (functional, safety, structural)
 - Structural Cracks (structural)
 - Transverse Cracks (environmental)
- Composite Index = Average(Ride, Rut, STRC Cracks, TRAN Cracks) –
1.25 x Standard Deviation(Ride, Rut, STRC Cracks, TRAN Cracks)

PAVEMENT CONDITION

Good	Fair	Poor	Very Poor
<p>Like new pavement with few defects perceived by drivers.</p> <p>(PCI 80 to 100)</p>	<p>Slight rutting, and/or cracking, and/or ride becoming noticeable to drivers.</p> <p>(PCI 65 to <80)</p>	<p>Multiple cracks are apparent, and/or rutting may pull at the wheel, and/or ride causes drivers to make minor corrections.</p> <p>(PCI 40 to <65)</p>	<p>Significant cracks may cause potholes, and/or rutting pulls at the vehicle, and/or ride is uncomfortable to occupants. Drivers may need to correct to avoid road defects.</p> <p>(PCI <40)</p>

GOOD



FAIR



POOR

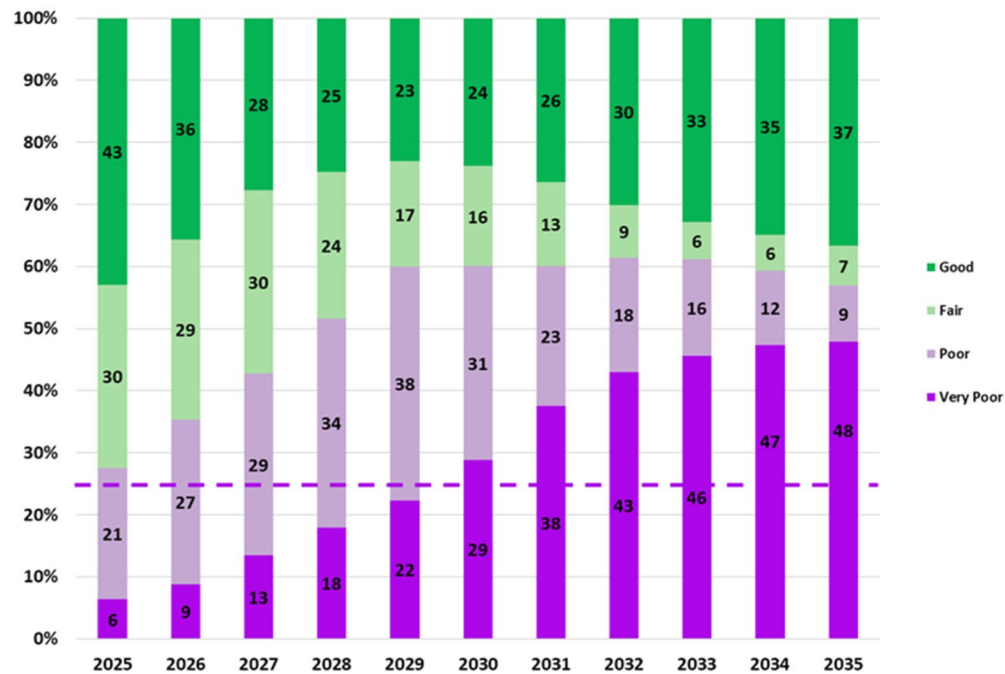


VERY POOR

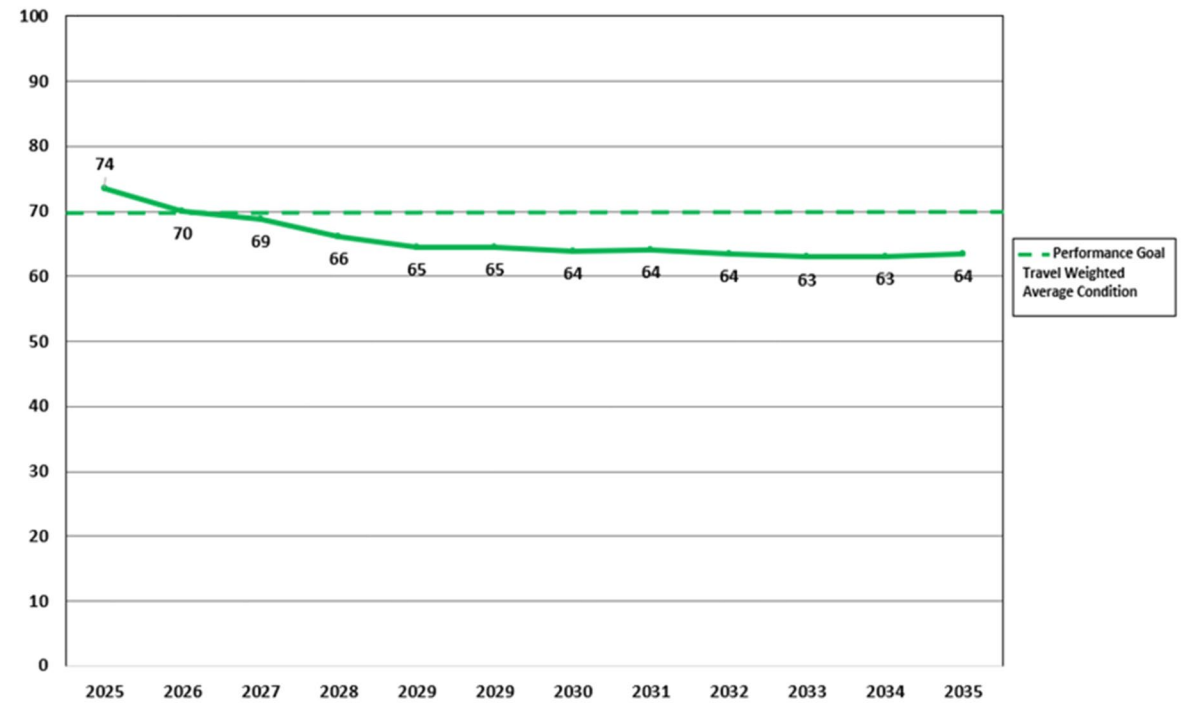


FORECASTED PAVEMENT CONDITIONS

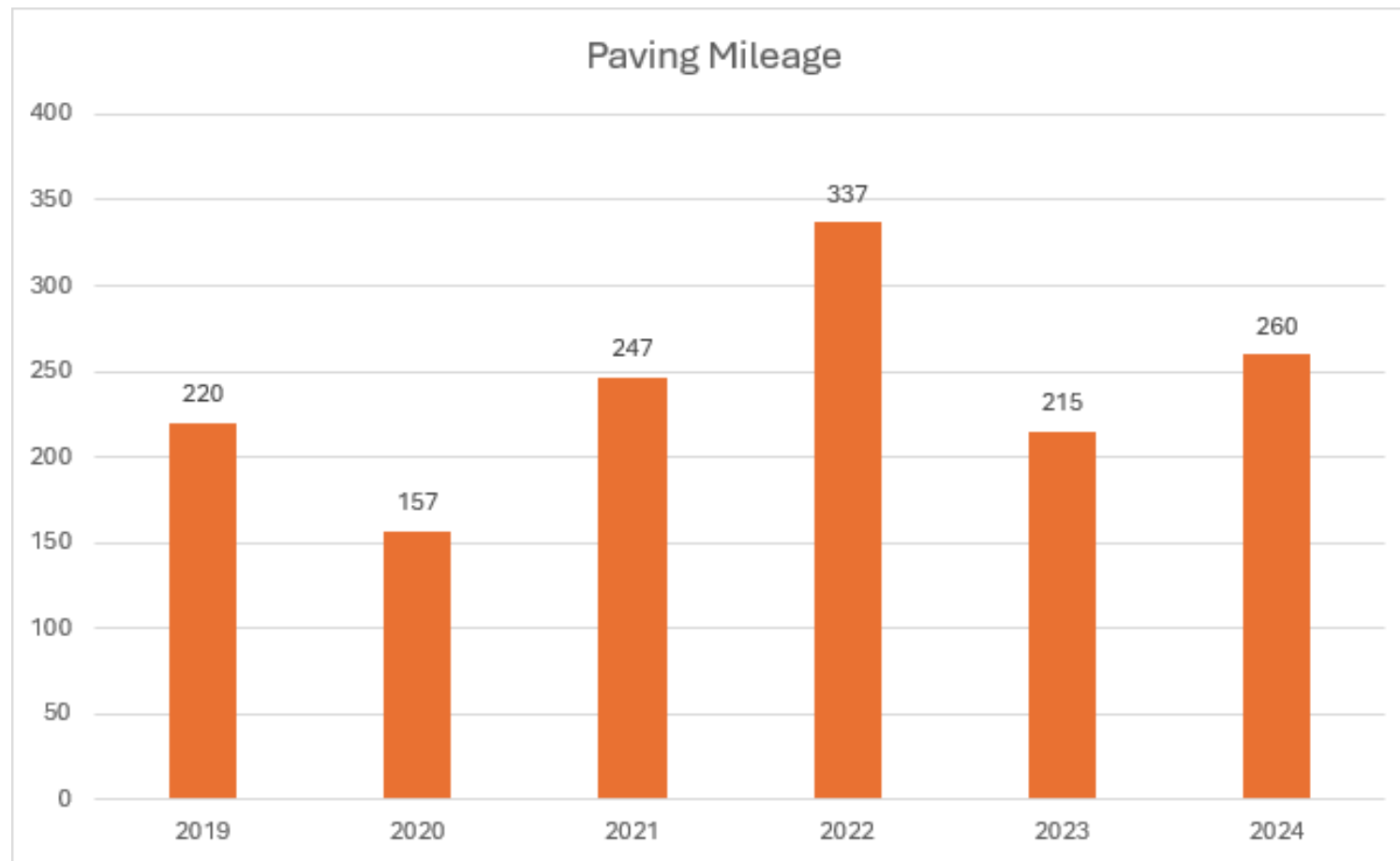
Forecasted Pavement Condition Distribution with an Annual Investment of \$103 Million



Forecasted Pavement Travel Weighted Average Condition with an Annual Investment of \$103 Million



HISTORICAL PAVING MILEAGE



BRIDGE INVENTORY

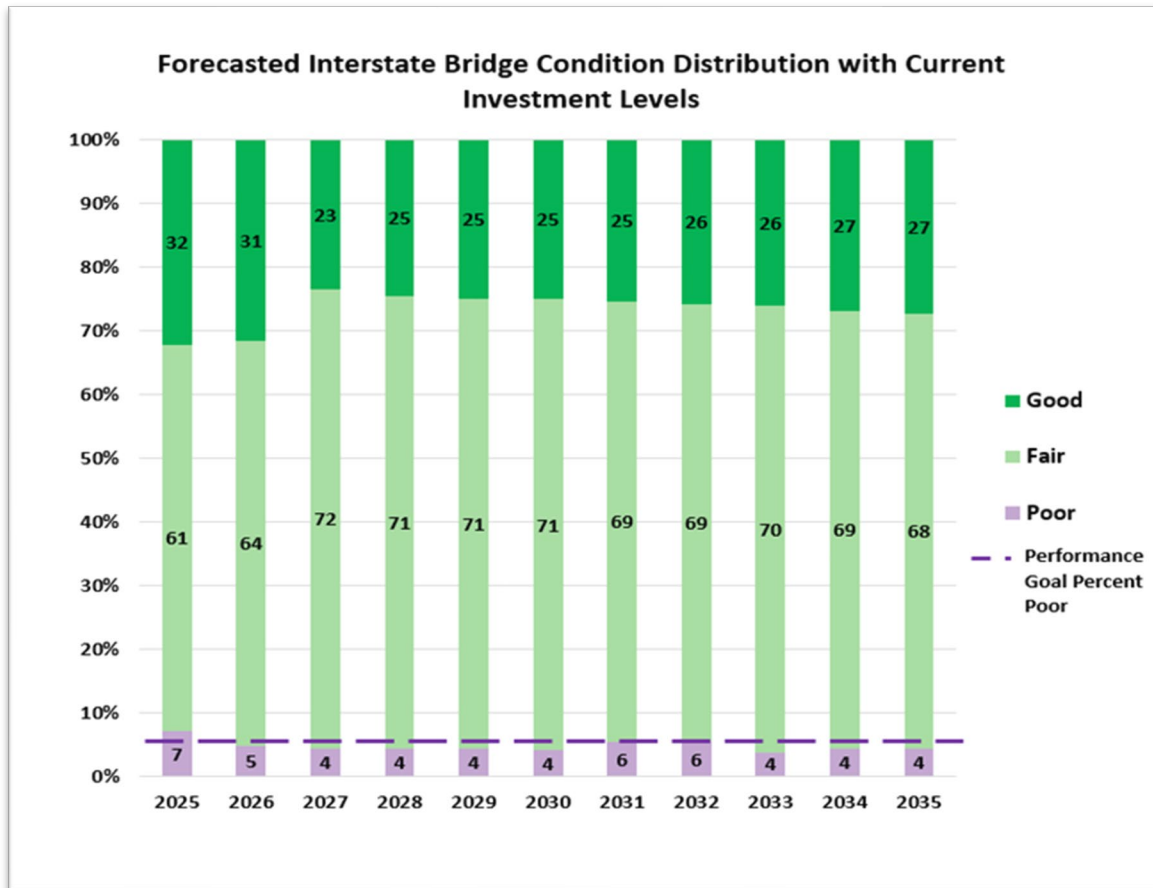
- 2827 Structures in Vermont over 20 feet(Long)
- 1,133 Structures on VTrans owned roads
- 314 Structures on the Interstate
- 1694 Structures are on Town Highways or Private



BRIDGE INSPECTION

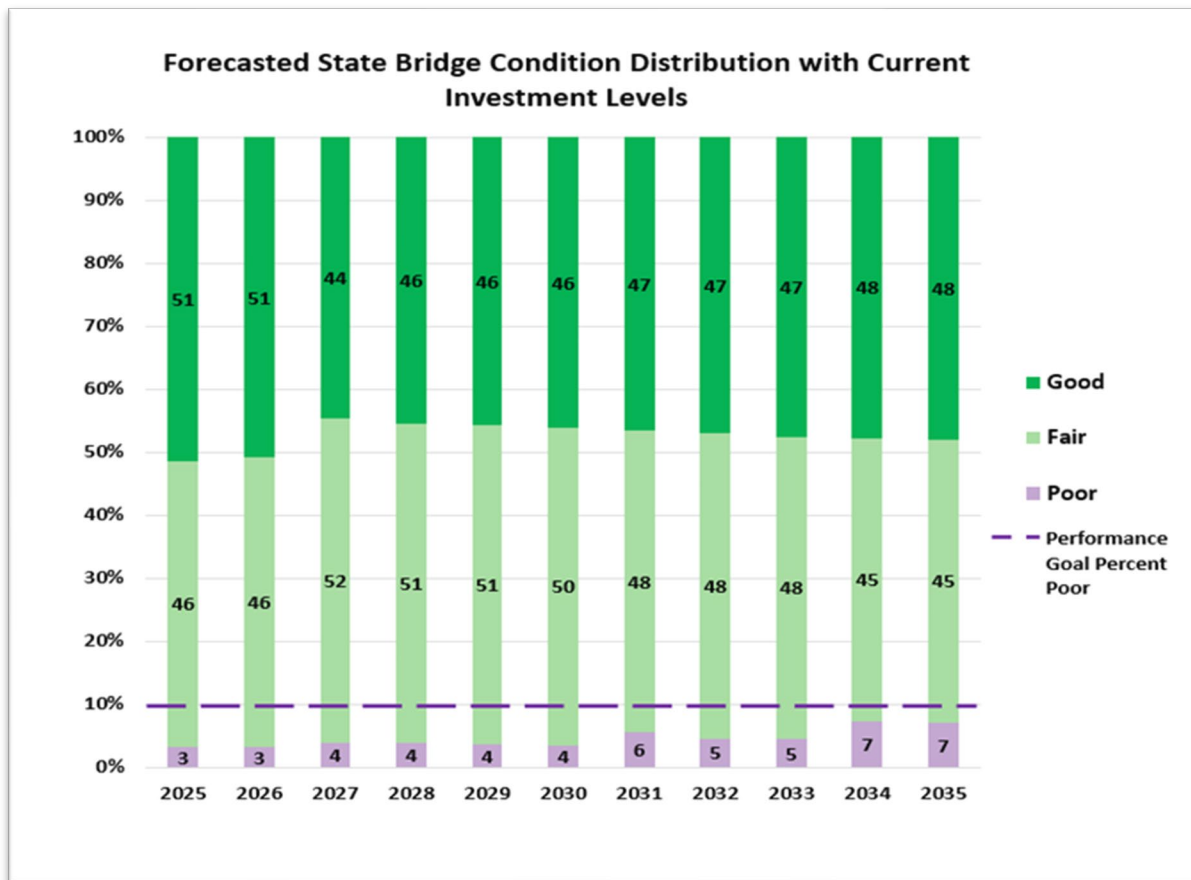
- Three Components of a bridge are rated 0-10
 - Deck
 - Superstructure
 - Substructure
- Good (7-9)
- Fair (5-6)
- Poor (0-4)
- Inspect all Long and State Shorts Every 24 Months
- Rating of 4 or less is more frequently
- Performance Measures are based on Sq. Ft area not

FORECASTED INTERSTATE CONDITION



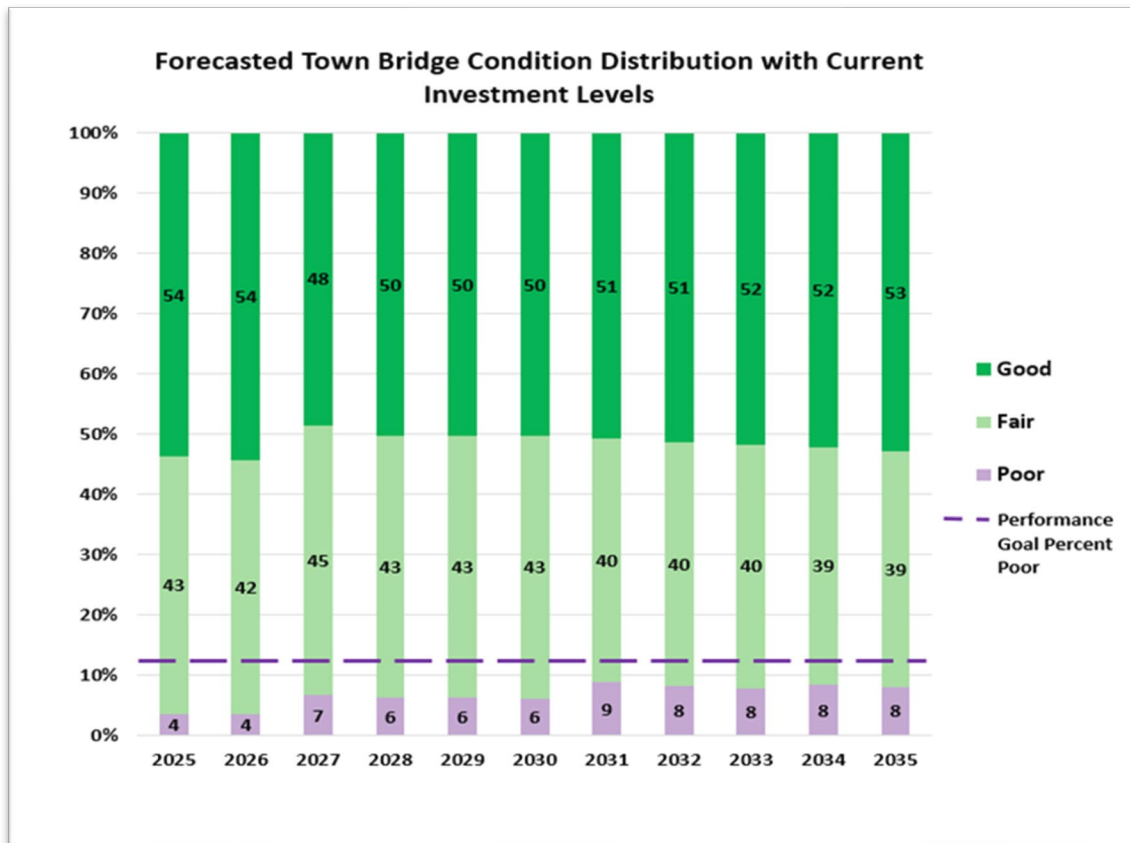
- 6% in poor condition
- Long Structures only

FORECASTED STATE BRIDGE CONDITION



- 10% in poor condition
- Long Structures only

FORECASTED TOWN BRIDGE CONDITION



- 12% in poor condition
- Long Structures only