



The Windmill Ridge Region of Southeastern Vermont



Jennifer Garrett , Project Director, Vermont Land Trust

Jennifer Latham, Board Chair, Windmill Hill Pinnacle Association

1

About Vermont Land Trust

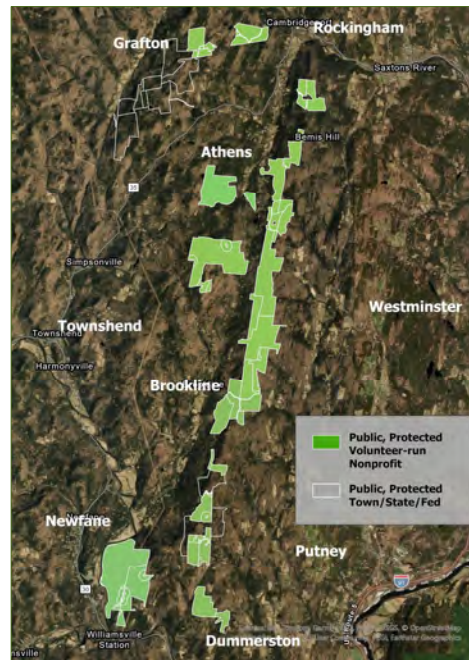
- **Founded in 1977**
- **Conserved 11% of Vermont, over 647,000 acres**
- **Protected 1,100+ farms and 450,000 acres of forestland**
- **Steward 2,300 easements**
- **Own 44 properties**
- **3,100 members**
- **47 employees**
- **FY25 Operating Budget: \$7.8M**
- **5 offices: Montpelier, Richmond, Newport, Woodstock, Brattleboro**

2

2

Windmill Ridge Region Conservation & VHCB

- Most (~4,500 acres) was acquired and protected with VHCB Conservation funding
- All managed for public recreation and ecological protection

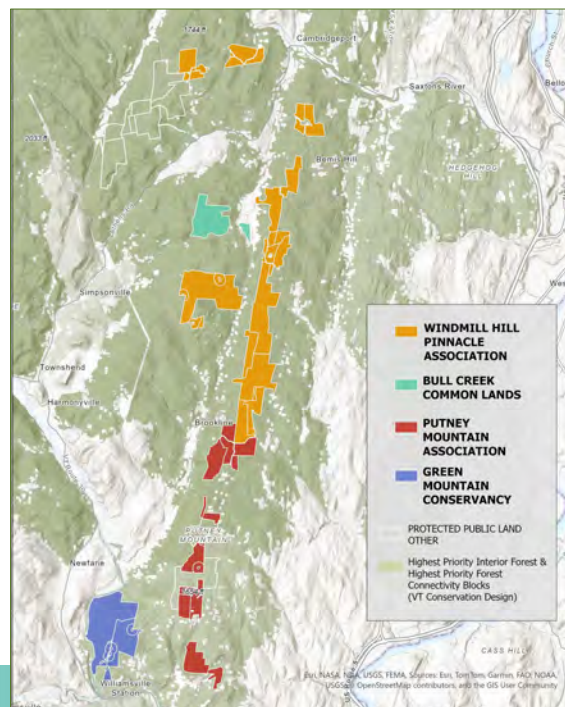


Protected, Publicly Accessible Forestland Parcels Along and Connected to the Windmill Ridge

3

Windmill Ridge Region Conservation & VHCB

- Most protected public land owned by four volunteer-run nonprofits
- Located in “Highest Priority” forest protection areas
- WHPA owns and stewards 2,800 acres and co-manages 28 miles of trails



Nonprofit Ownership in Windmill Ridge Region

4



The Windmill Ridge has important biodiversity features, such as rare plants, uncommon forest types, streams, and wetlands



Biodiversity and Habitat at Windmill Ridge

5



Ben Kimball



Public Recreation at Windmill Ridge

6



Volunteers from Putney Mountain Association & WHPA, 2018

7



Photo by Windmill Hill Pinnacle Association



Ribbon Cutting of the Jamie Latham Trail at Windmill Ridge, 1997

8

