



# Department of Corrections

January 6, 2026

# 2025 in Numbers



## Staffing:

- New hires: **214**
- Overall staff vacancy rate: **12%**
  - Facilities: **14.6%** (3% decrease from 12/24)
  - Field: **8.7%**

## Incarcerated/Supervised Population:

- **16%** increase in incarcerated individuals
  - Male increase: **13%**
  - Female increase: **44%**
- Total releases from incarceration: **4,253**
  - Total returns: **855**
- **2%** increase in supervised population

# 2025 in Review



## Initiatives:

- Expanded pretrial supervision to Burlington
- Began implementation of body-worn cameras
- Prepared for Vermont Medicaid Reentry Program (1115 waiver) implementation
- Practiced large-scale tactical response in facilities
- Strengthened accuracy of VINE notifications and expanded capacity for system maintenance

## Challenges:

- Infrastructure
  - Lack of wi-fi and air conditioning
  - Limited space to accommodate population increase and expand programming
- Retaining correctional staff
- Aging population and lack of community placement options

# 2026 Department Priorities



## Staffing

- Decreasing staffing vacancies and retain correctional staff

## Health & Wellness

- 1115 waiver implementation
- Increasing offerings for substance use disorder treatment

## DEI & Justice

- Staff retention, hires, promotions

## Modernization

- Implementing body-worn cameras
- Expanding Pretrial Supervision Program statewide
- Replacing CRCF with a modern, trauma-informed women's facility



# Vermont's Incarcerated Population

# DOC Population Statistics: Health



## Medication Trends

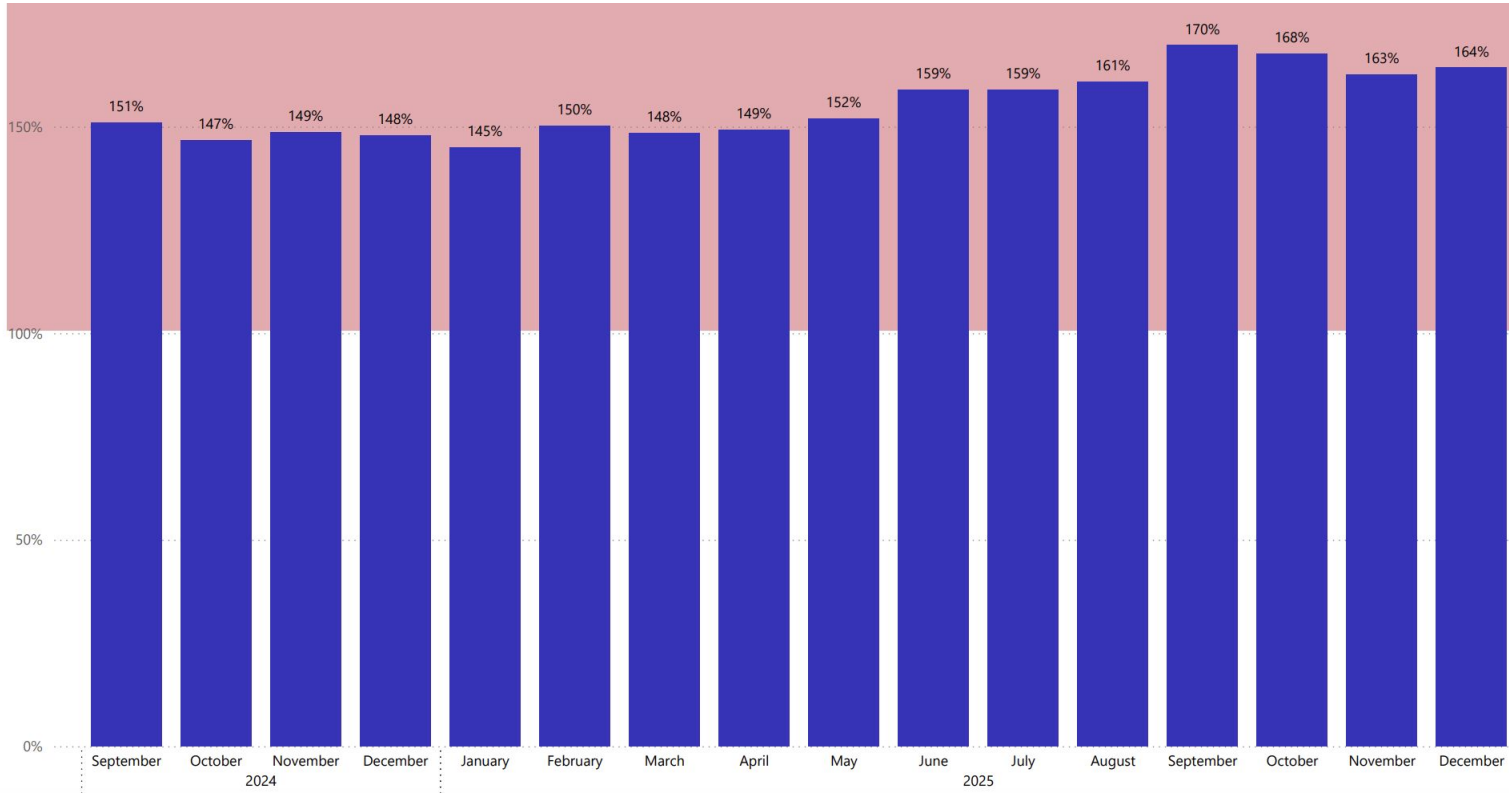
- Population receiving medication: **95%**
- Receiving psychotropic medications: **42%**
- Receiving Medication for Opioid Use Disorder (MOUD): **56%**

## Health Trends

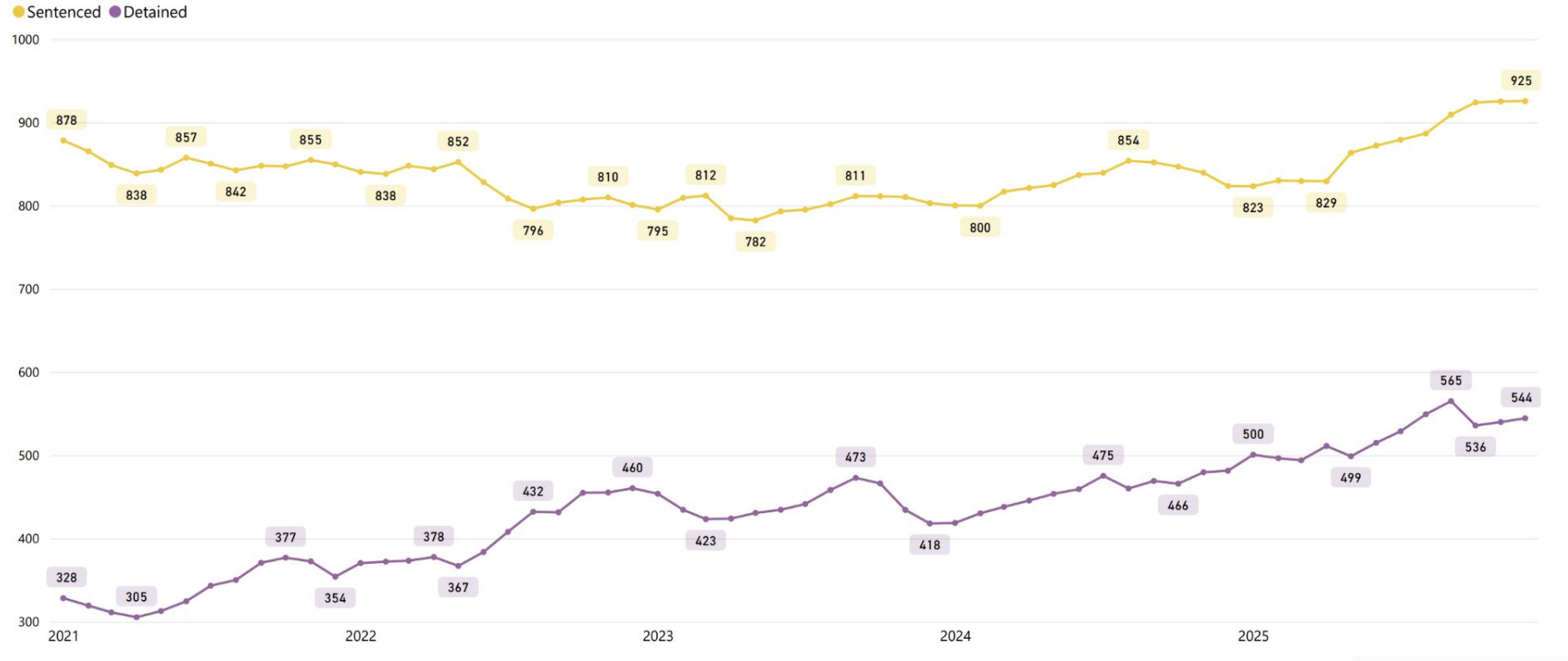
- Population diagnosed with chronic illness: **77%**
- Total ED visits by incarcerated individuals in 2025: **756**
- Geriatric population: **12%**

## Male Correctional Facility Bed Capacity: Last 12 Months

Vermont DOC facilities remain oversubscribed, with an average of **157%** of male general population beds in use statewide over the last year. The American Correctional Association recommends a census of *no higher than 85%*.

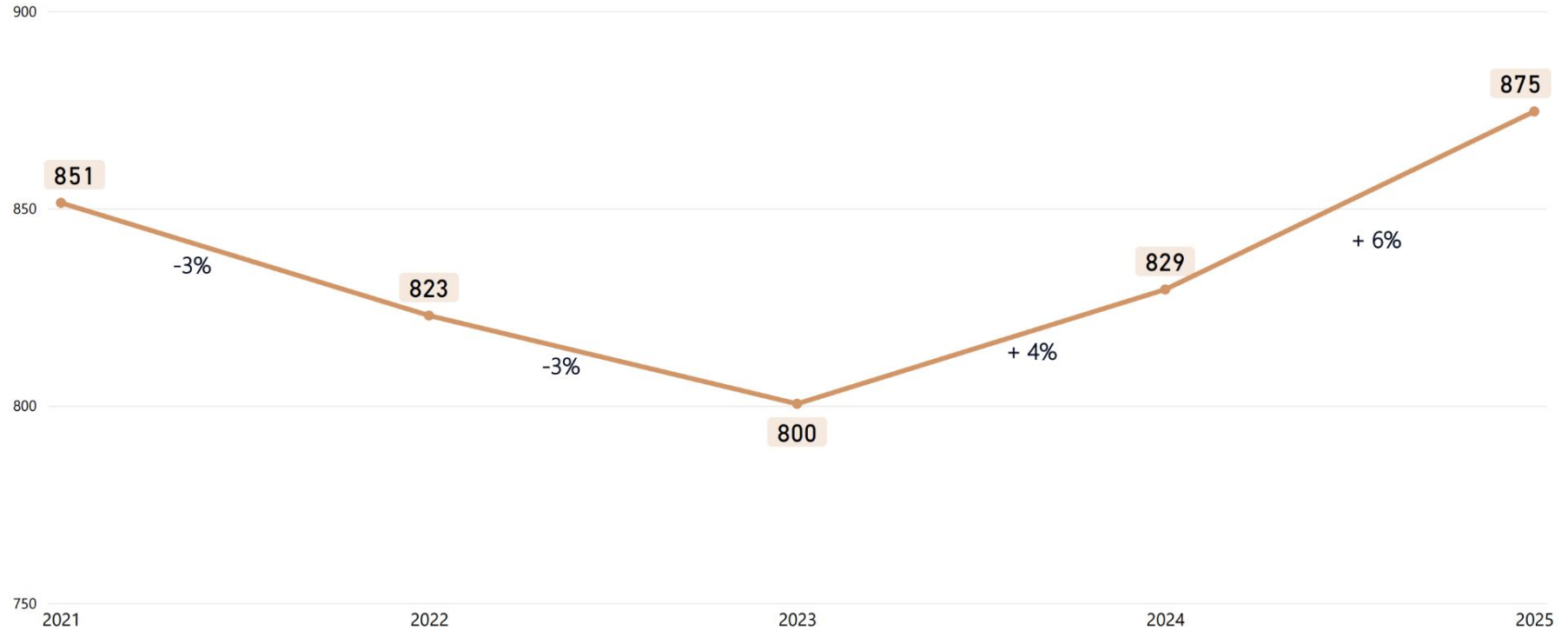


## Sentenced & Detained Male Population: 2021 to 2025

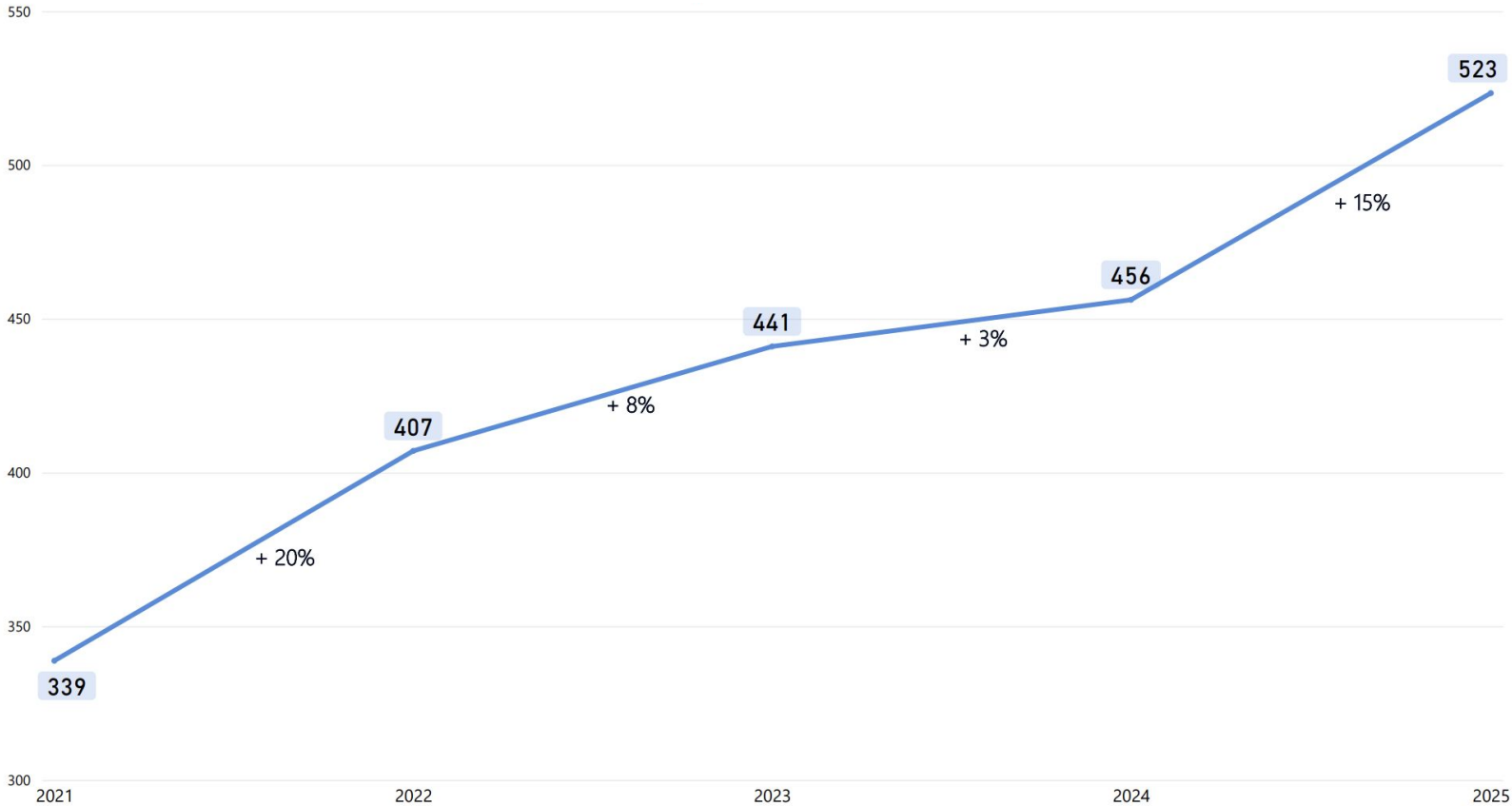




## Sentenced Male Population: 2021 to 2025

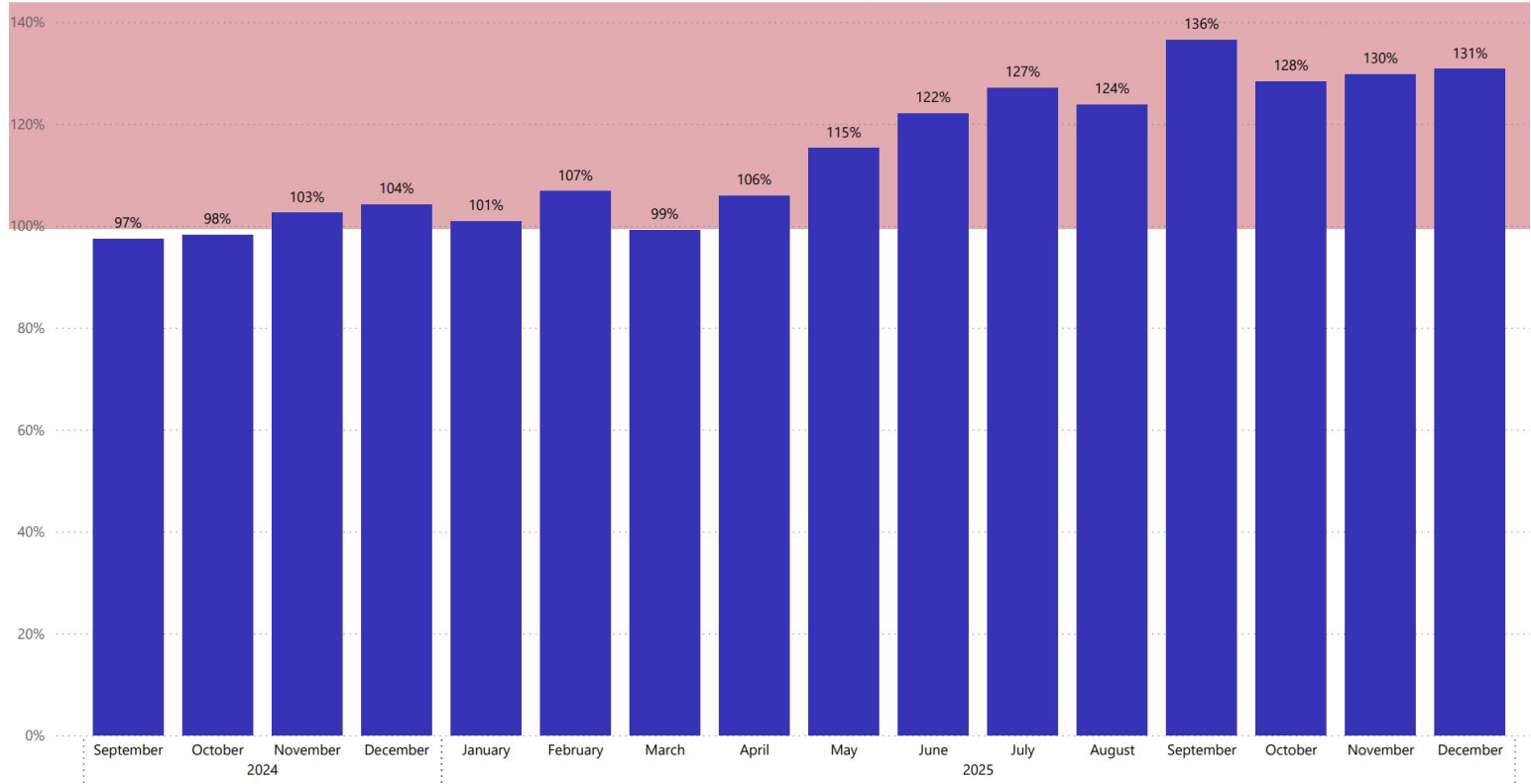


# Detained Male Population: 2021 to 2025



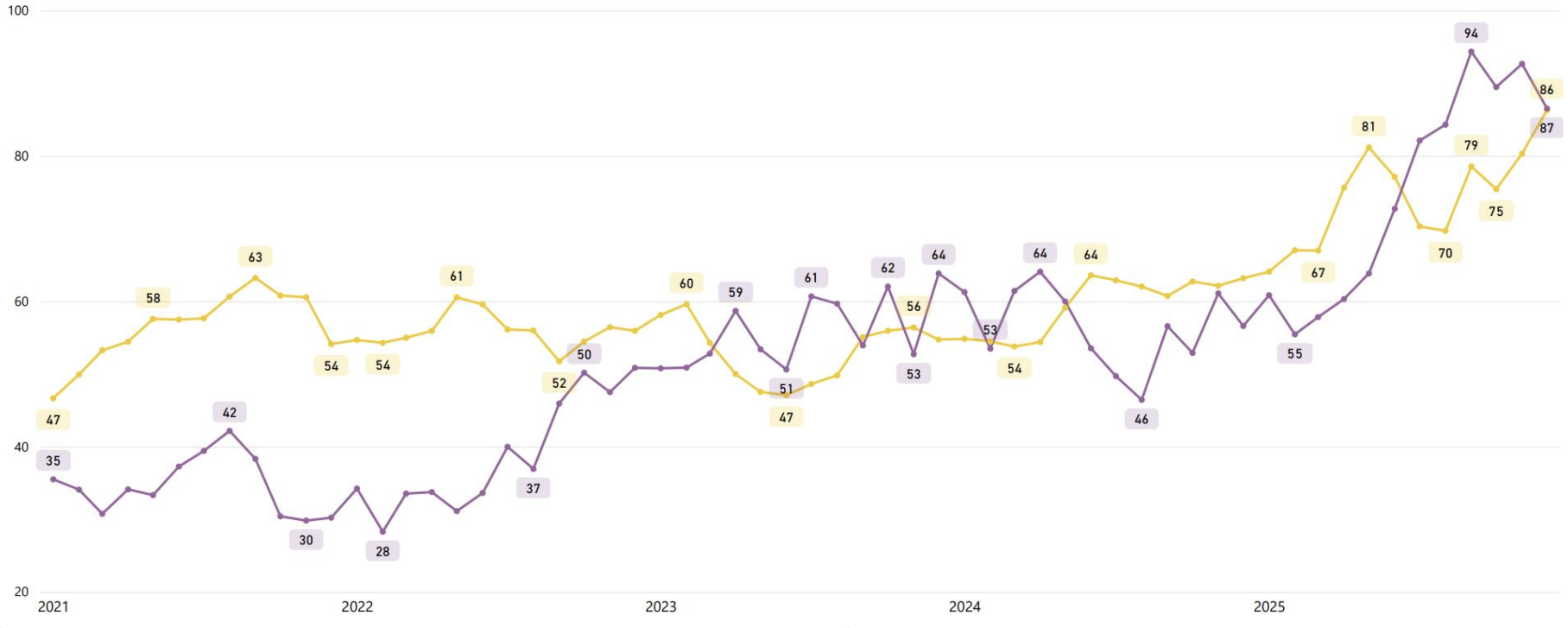
## Female Correctional Facility Bed Capacity: Last 12 Months

Vermont DOC facilities remain oversubscribed, with an average of **123%** of female general population beds in use statewide over the last year. The American Correctional Association recommends a census of *no higher than 85%*.

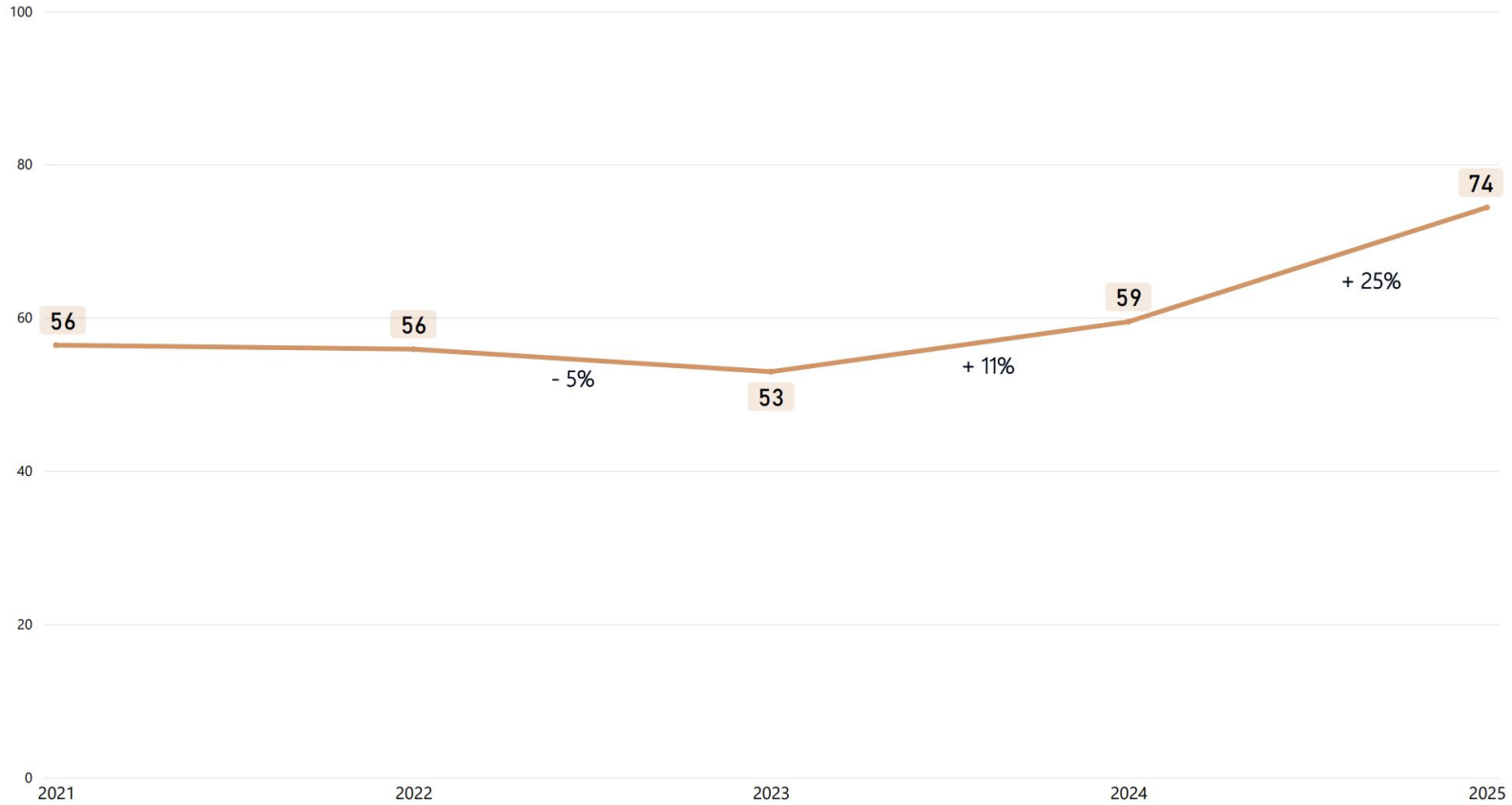


## Sentenced & Detained Female Population: 2021 to 2025

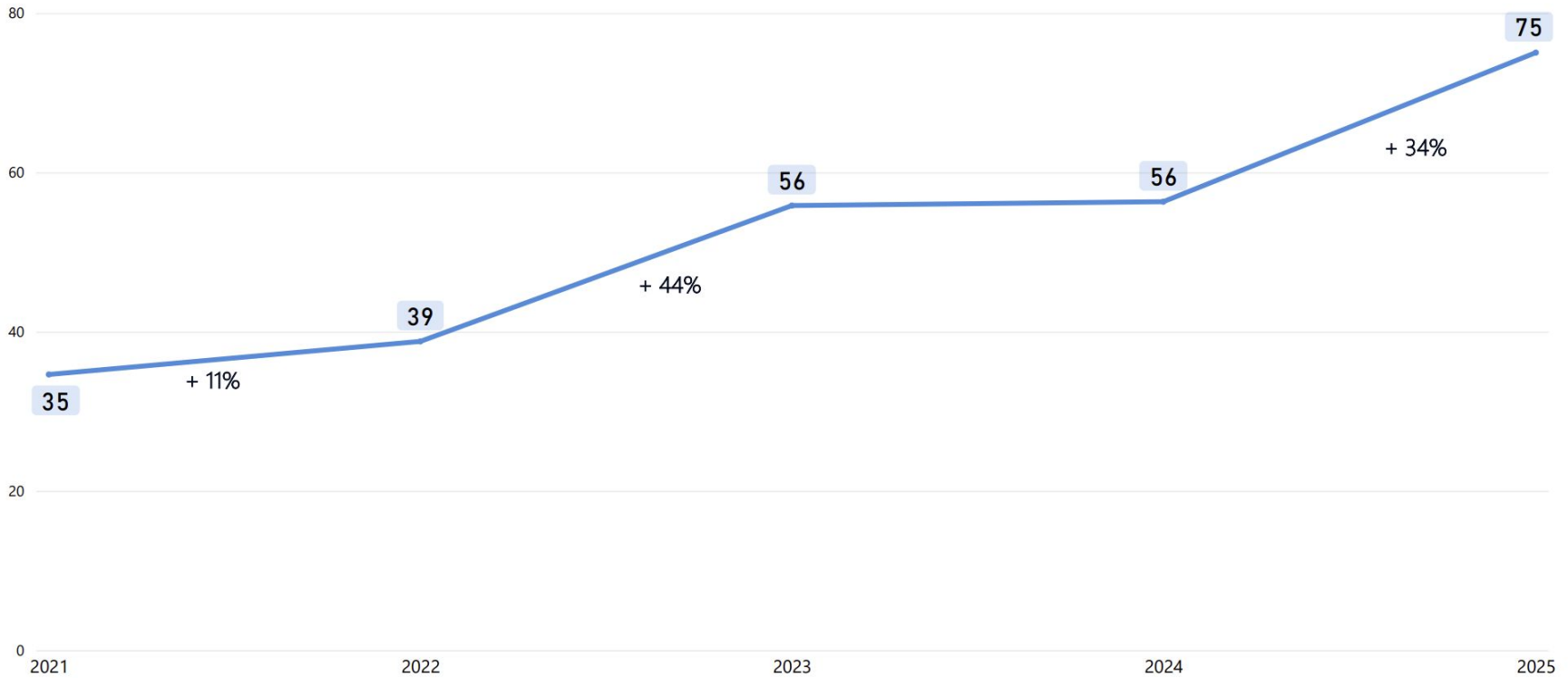
● Sentenced ● Detained



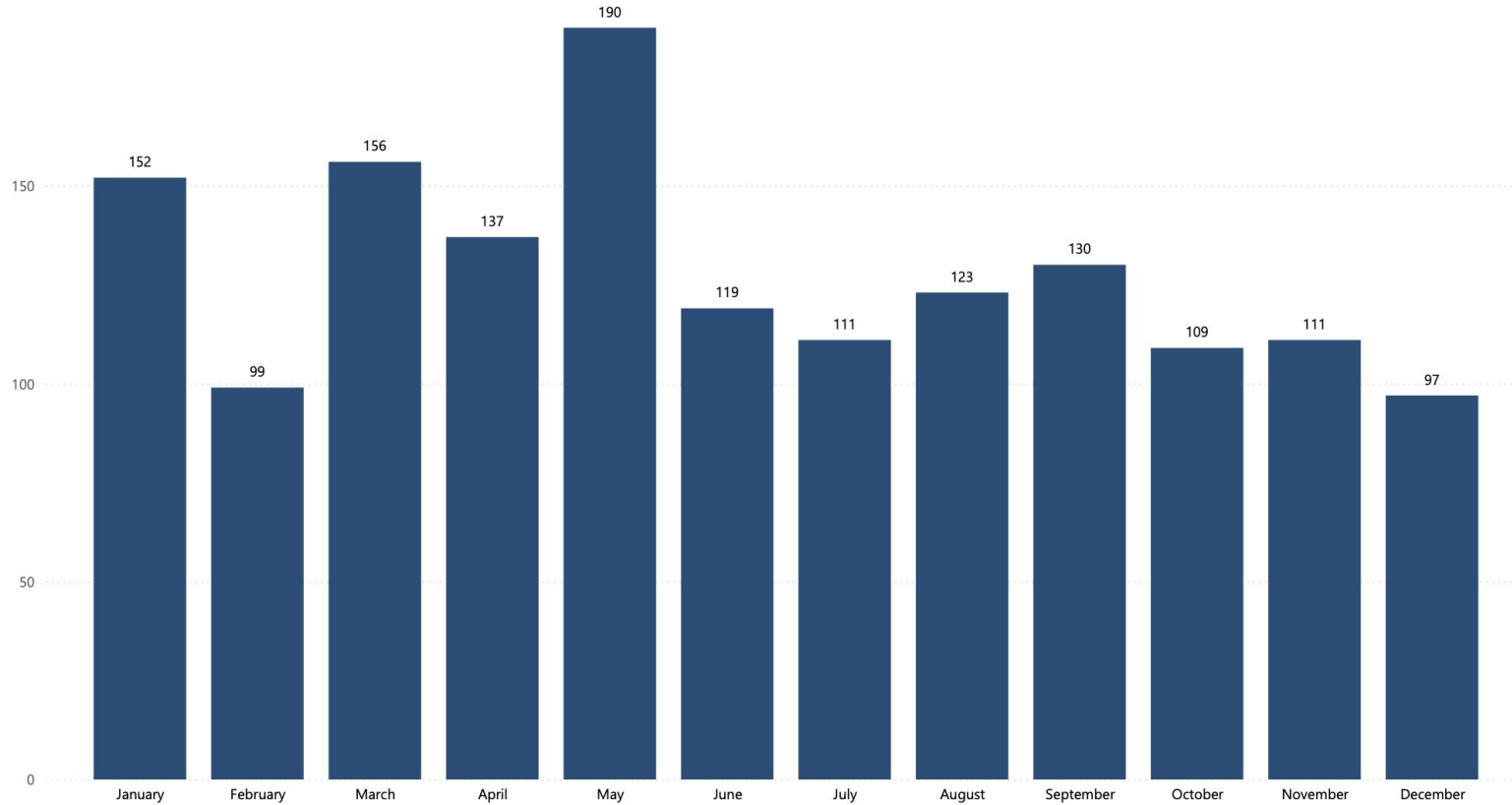
## Sentenced Female Population: 2021 to 2025



## Detained Female Population: 2021 to 2025



# Immigration Detainee Trends: 2025

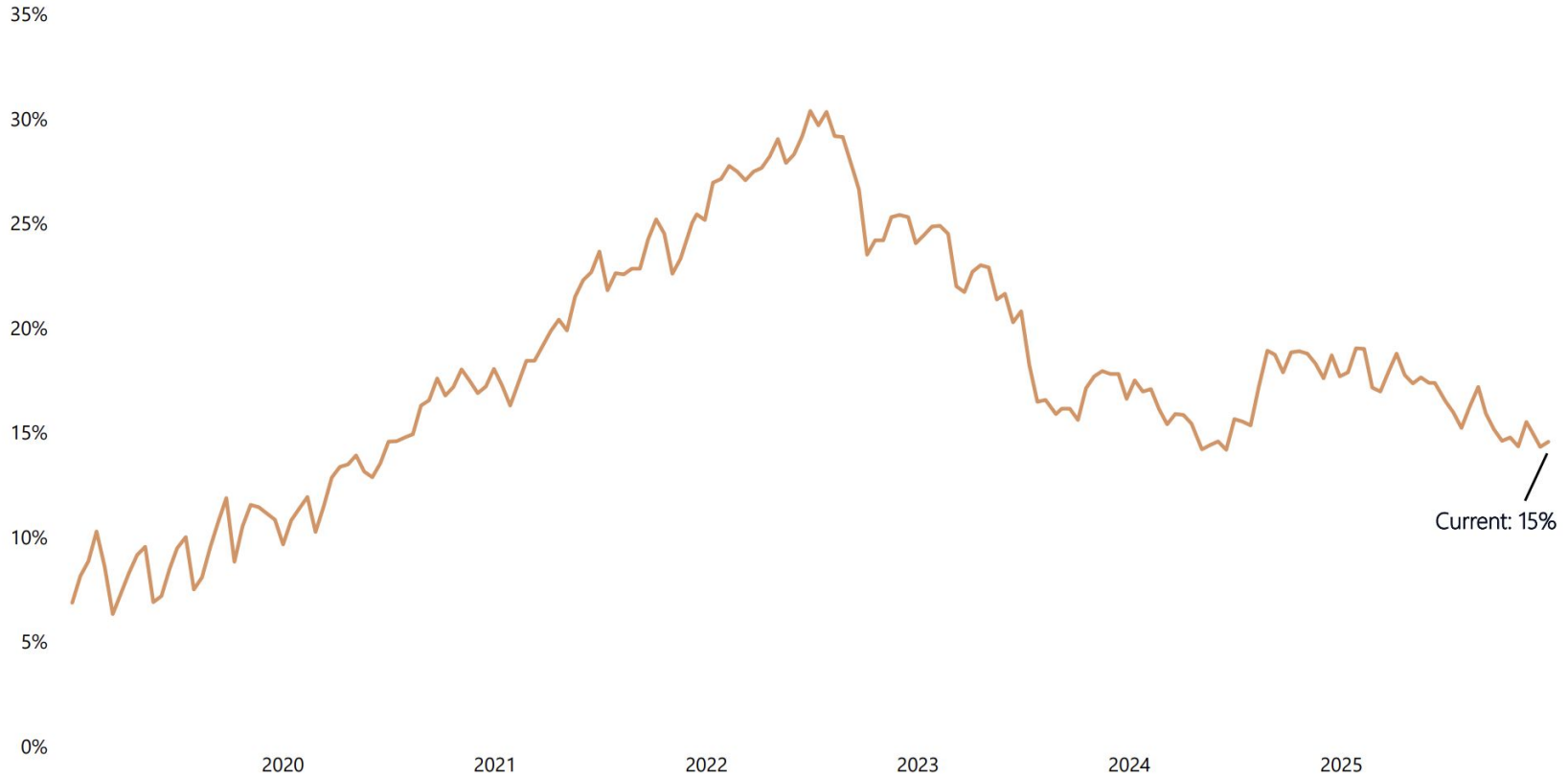




# Staff & Staffing Data



## DOC Facility Staff Vacancies: 2019 to 2025





# Questions?

# Contact



**Haley Sommer**

**Director of Communications & Legislative Affairs**

**(802) 793-9075 • [haley.sommer@vermont.gov](mailto:haley.sommer@vermont.gov)**

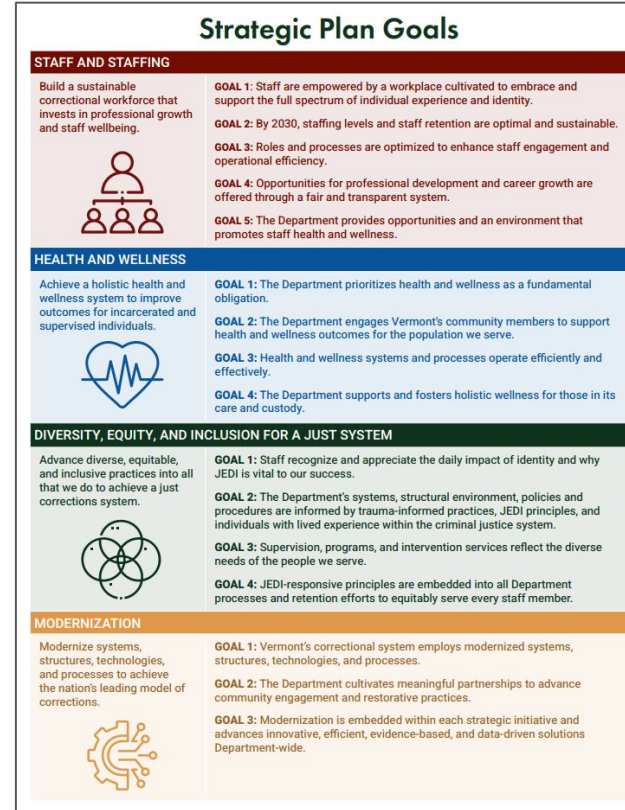
**Constituent Services**

**[ahs.docconstituentmanagement@vermont.gov](mailto:ahs.docconstituentmanagement@vermont.gov)**



# Appendix

# DOC Strategic Plan



# Overview

- Housed within Vermont **Agency of Human Services**
- **Unified System**
  - Pretrial supervision → detained → sentenced → community supervision
- **Facilities:**
  - 6 in-state facilities
    - 5 men's facilities
    - 1 women's facility
  - 1 out-of-state men's facility
- **Probation & Parole:**
  - 12 district offices
- Training: **Vermont Correctional Academy**
- Budget: ~**\$230M** (96% General Fund)
- Staff: **1,100+**

## Vermont DOC Sites

Correctional Facility   District Office   Correctional Academy

