



Women's Correctional & Reentry Center

Introduction & Overview

Chittenden County Correctional Facility (CRCF)



Chittenden County Correctional Facility (CRCF)



Chittenden County Correctional Facility (CRCF)

- 1 Poor quality of lighting, does not respond to occupants' circadian rhythm
- 2 Poor natural daylight with typical institutional bars on windows
- 3 Mildly therapeutic color scheme
- 4 Rooms are not fully ligature resistant
- 5 Hard institutional furnishings
- 6 Blind corners and inefficient use of space
- 7 Upper bunks are dangerous and difficult to get up to
- 8 Inability to maintain thermal comfort



Chittenden County Correctional Facility (CRCF)



Evidence-Based Design



Evidence-Based Design

- 1 SENSORY BOUNDARIES**
Create permeable membranes within spaces to modulate sensory information.
- 2 IDENTITY ANCHORS**
Create touch-points for personalization.
- 3 NESTED LAYERS**
Create options for interaction and withdrawal.



Evidence-Based Design



Davidson County – Downtown Detention Center

Scandinavian Facilities



Halden Prison, Norway



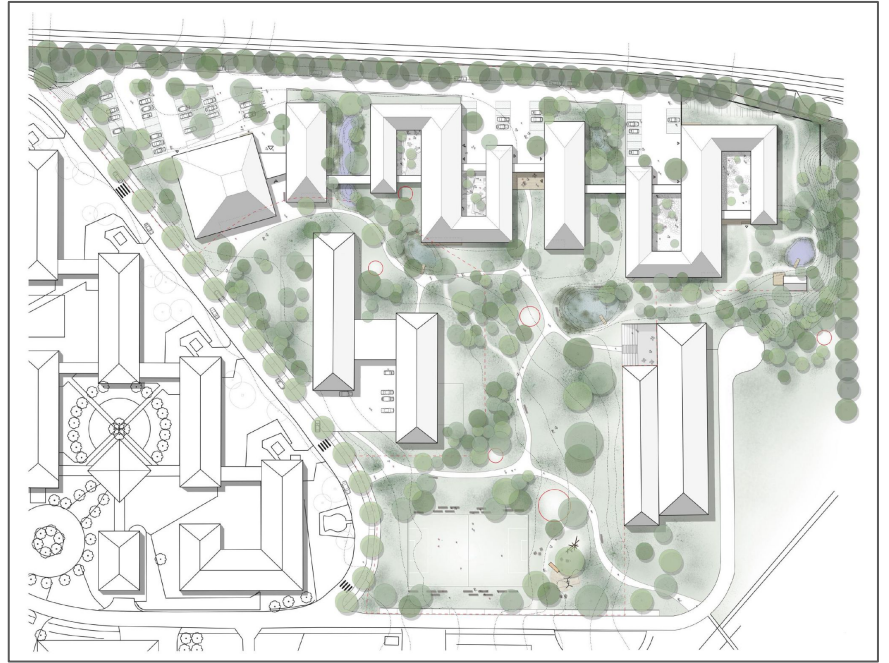
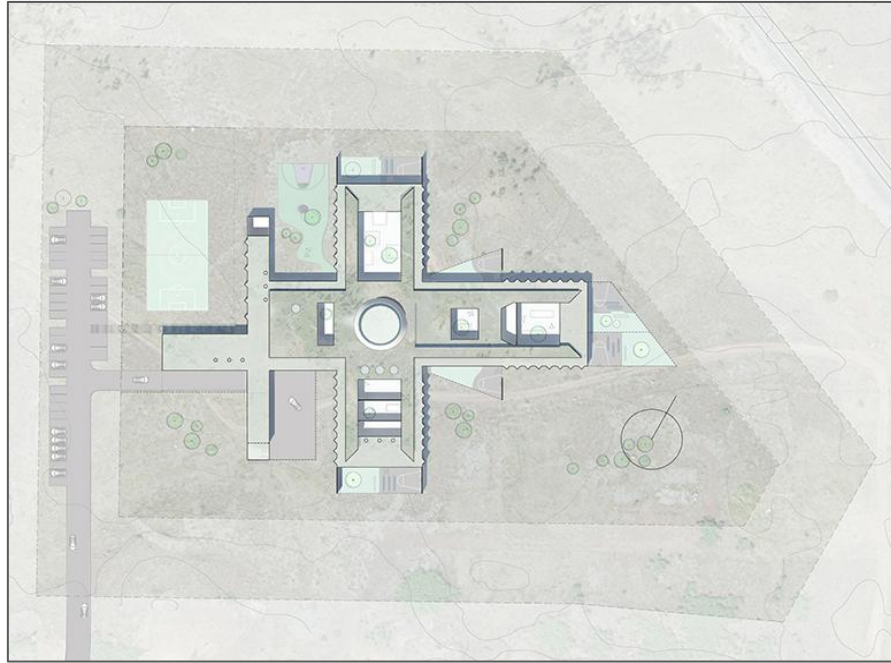
Scandinavian Correctional Facilities



Halden Prison, Norway



Scandinavian Facilities



Holmsheidi Prison, women's facility, Reykjavik, Iceland; Psychiatric Center, Copenhagen, Denmark

Scandinavian Facilities



Psychiatric Center, Copenhagen, Denmark



Maine Model

Southern Maine Women's Reentry Facility



Southern Maine Women's Reentry Facility



Southern Maine Women's Reentry Facility



Southern Maine Women's Reentry Facility



Southern Maine Women's Reentry Facility



Southern Maine Women's Reentry Facility



Southern Maine Women's Reentry Facility





Vermont Models

River Valley Therapeutic Residence



River Valley Therapeutic Residence



River Valley Therapeutic Residence



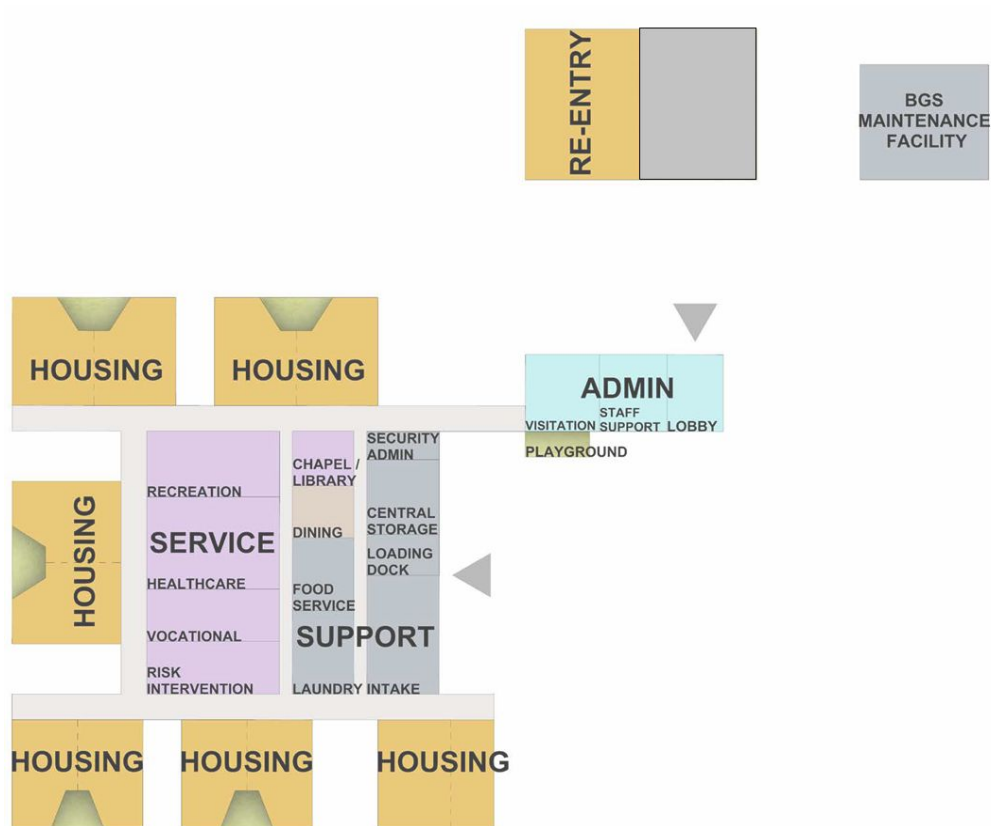
River Valley Therapeutic Residence



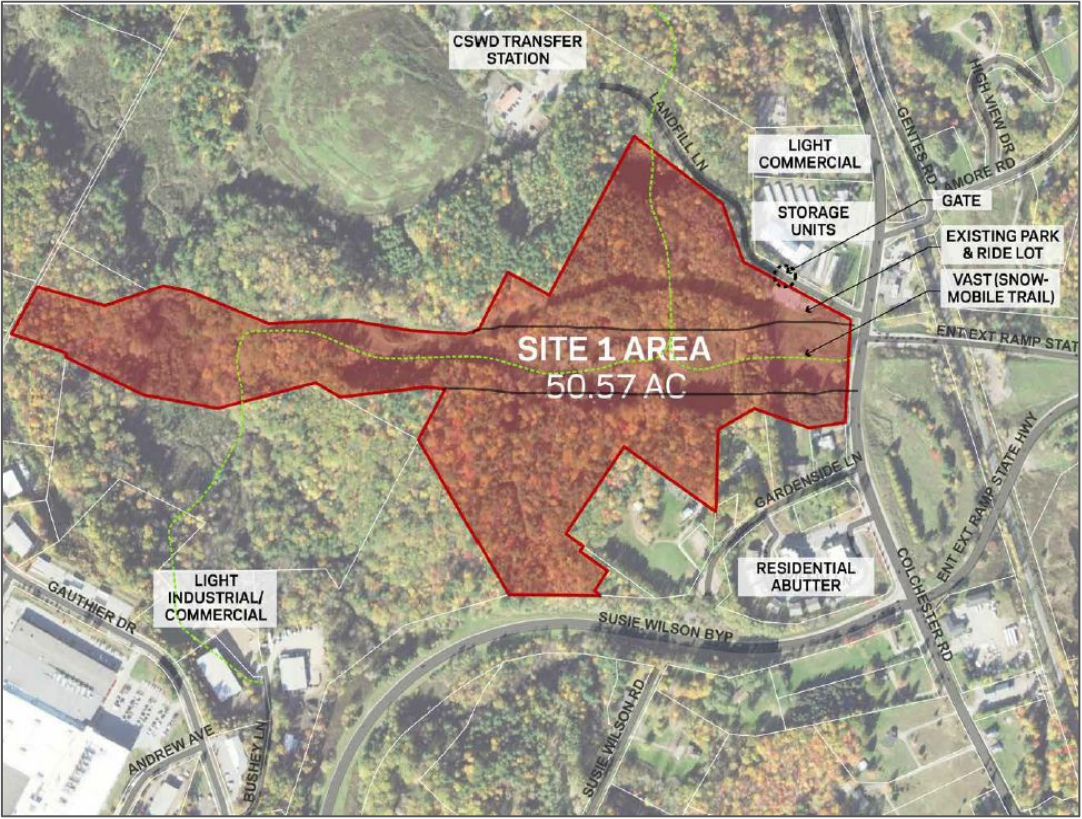
River Valley Therapeutic Residence



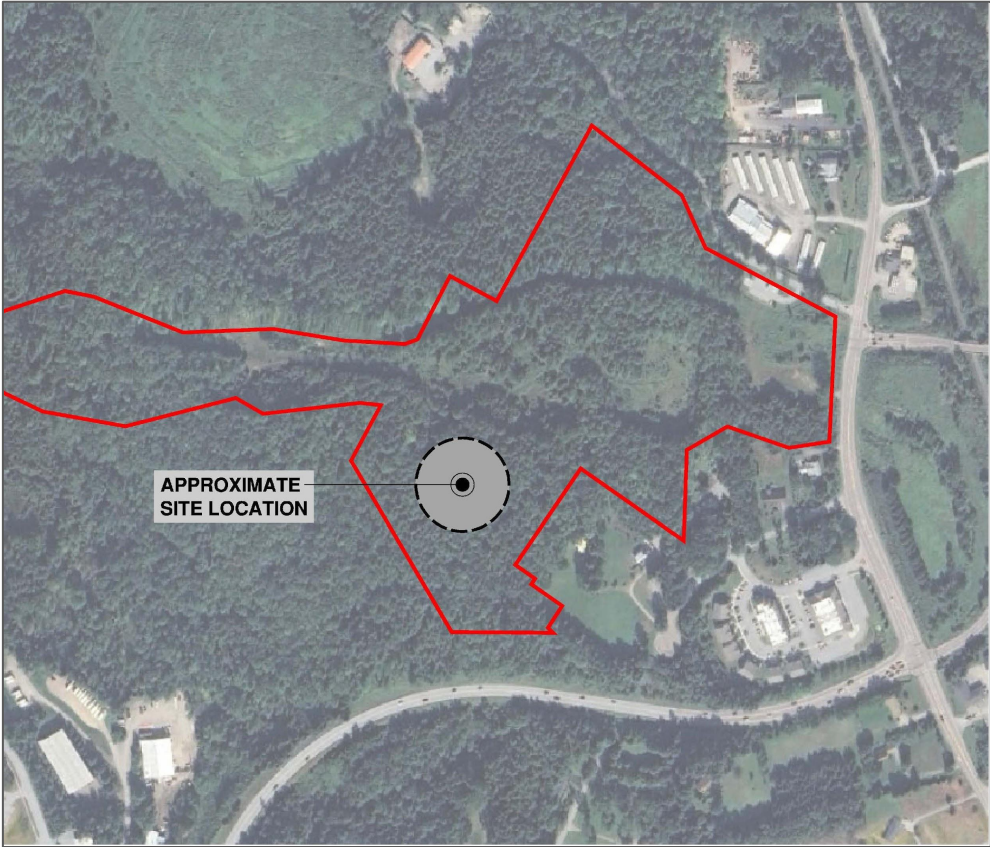
CONCEPTUAL SPACE DIAGRAM



Potential Essex Site

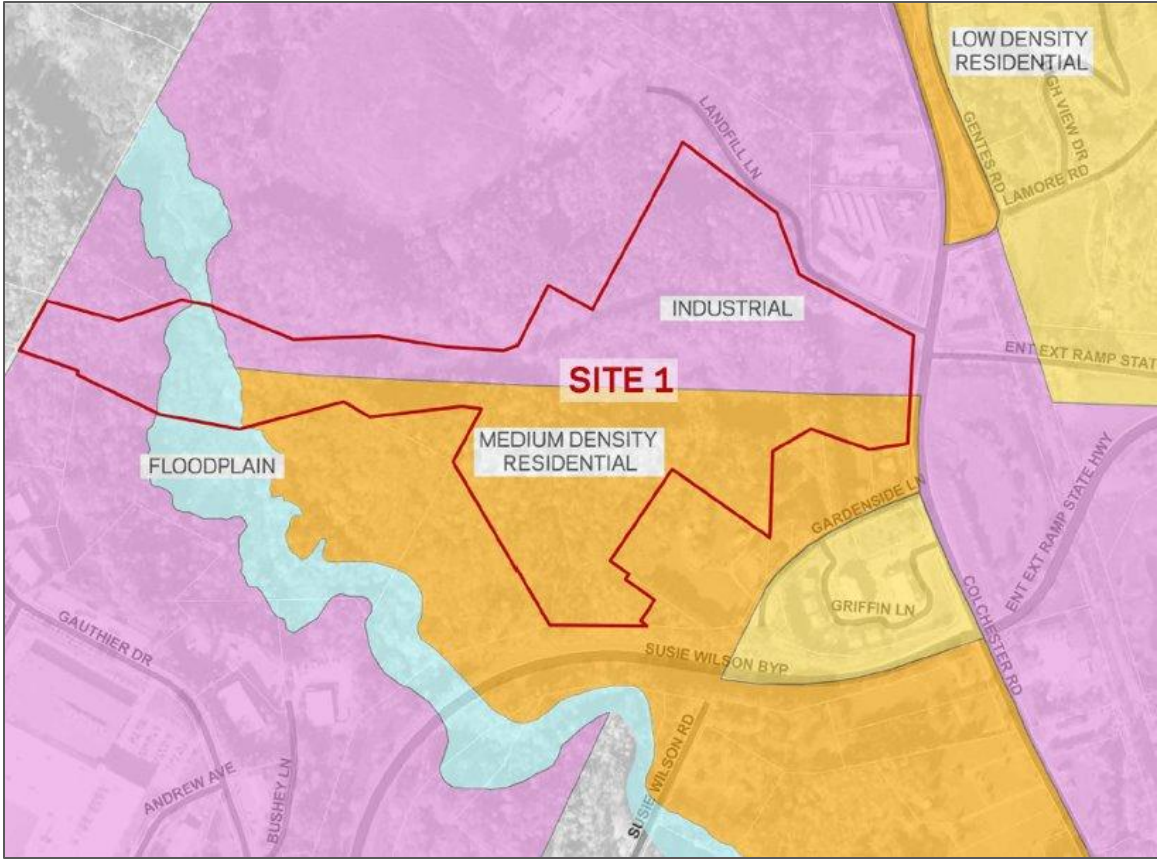


Potential Essex Site



Note: Conceptual mock-up, not final design

Potential Essex Site





Discussion



Contact

DOC

Isaac Dayno

DOC Director of Policy

(802) 793-4392 • isaac.dayno@vermont.gov

BGS

Cole Barney

BGS Principal Assistant

(802) 480-1243 • cole.barney@vermont.gov