



State House Entryway Overview

SENATE INSTITUTIONS

APRIL 14, 2026

FY27 Capitol Bill Request:

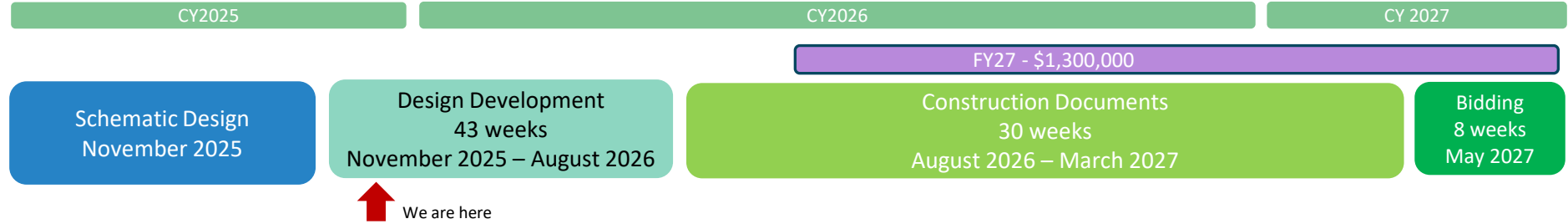
The \$1,300,000 request is for the continuation of the State House addition, that will provide an accessible and secure entrance onto the west elevation. The funding allows the project to continue into the construction phase as soon as the design is completed. The funds will be used for submittals, shop drawings to order long-lead equipment, and the mobilization to project by the contractor as soon as the legislature adjourns.

Total Project Estimate: \$18.6 million
Doors open Estimate: 2030 Session

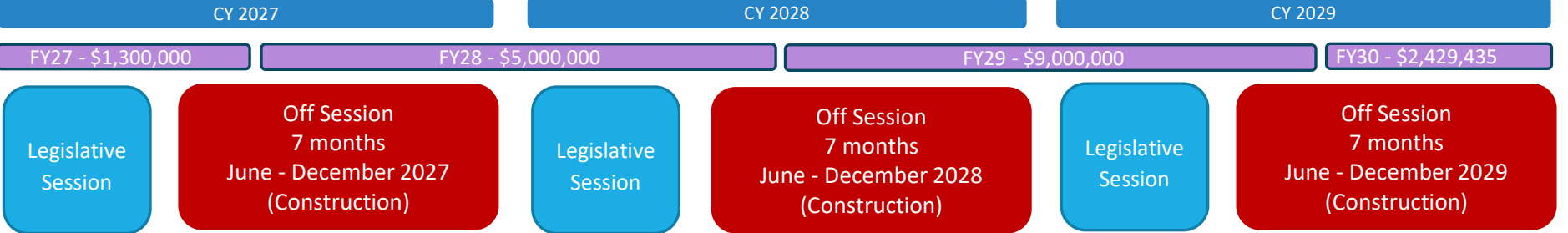


Estimated Project Schedule and Budget

DESIGN (24 Months)

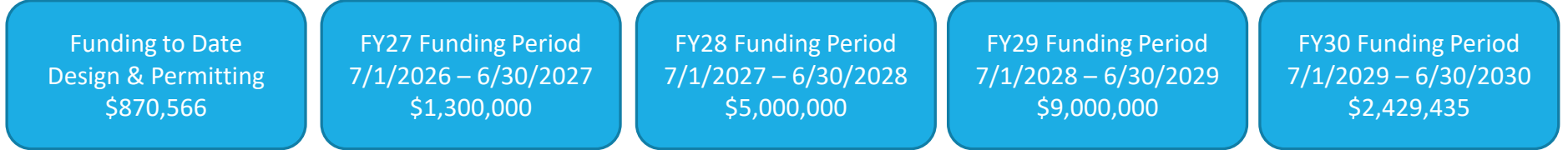


CONSTRUCTION (21 months)

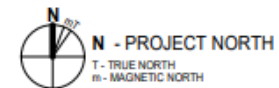
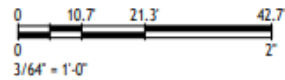
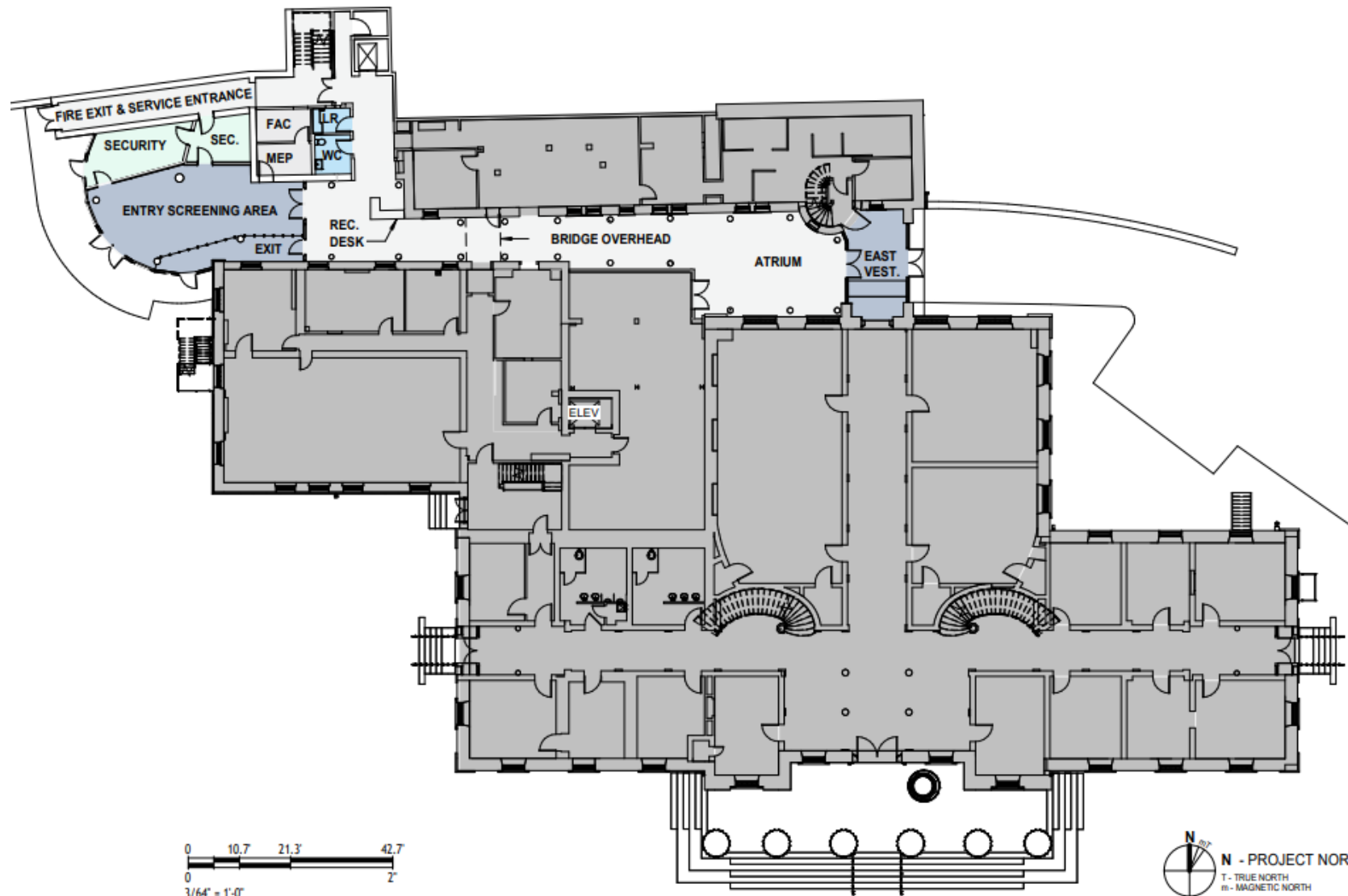


Approximately 3 years of construction – No construction work during the Legislative session

FUNDING



* The estimates and schedule are based on the approved Schematic Design dated May 29, 2025



A001

© 2025 Freeman French Freeman, Inc.



freeman | french | freeman



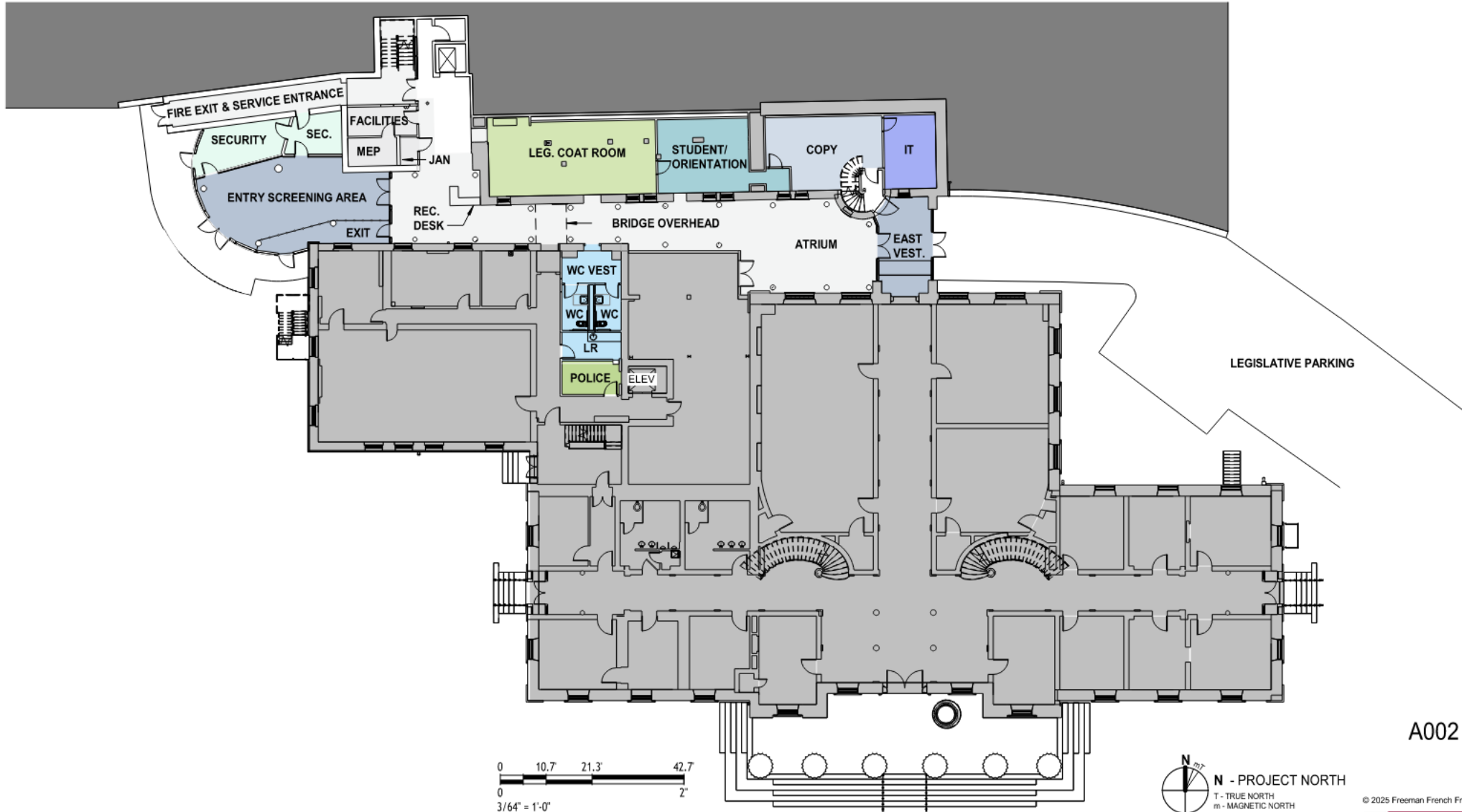
FIRST FLOOR PLAN . . .

12/30/25

Site Conditions

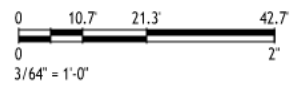
- 1) Accessible Parking
- 2) Accessible Sidewalks
- 3) Bus and Delivery Access
- 4) Landscaping





LEGISLATIVE PARKING

A002



© 2025 Freeman French Freeman, Inc.

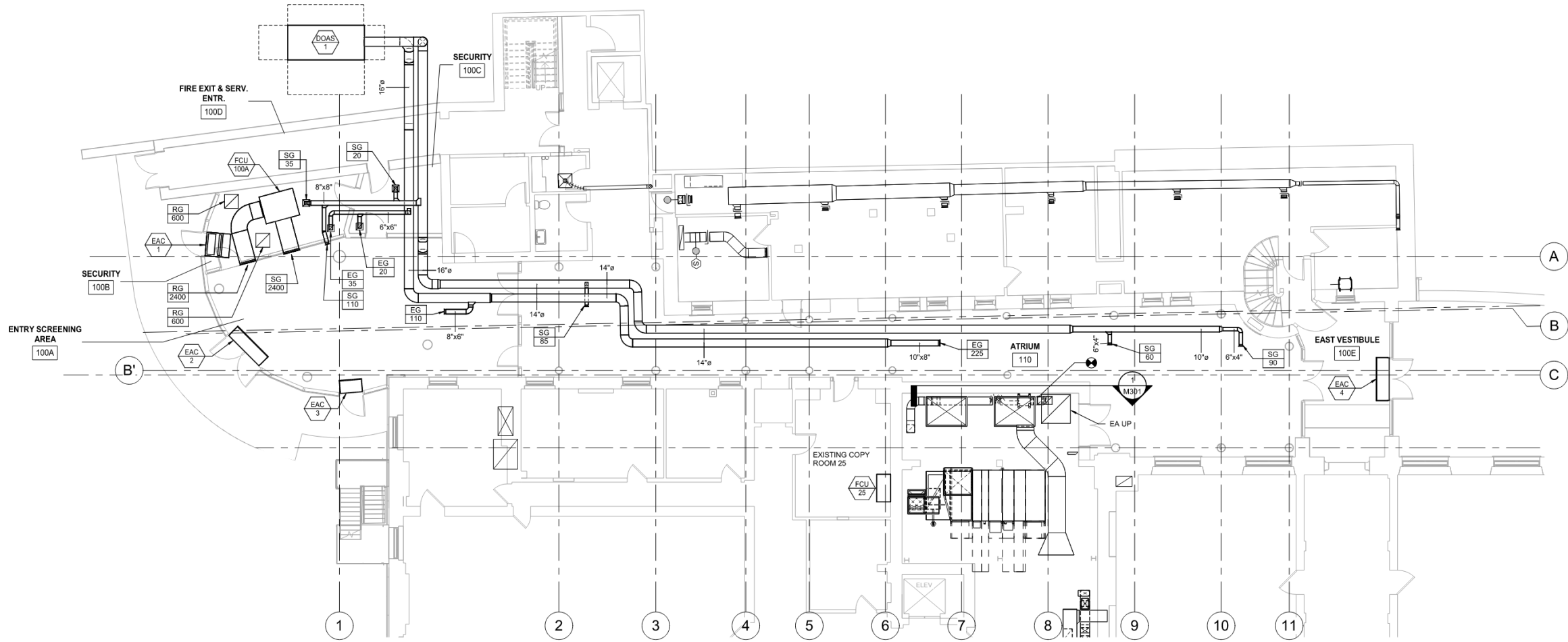


FIRST FLOOR PLAN

12/30/25



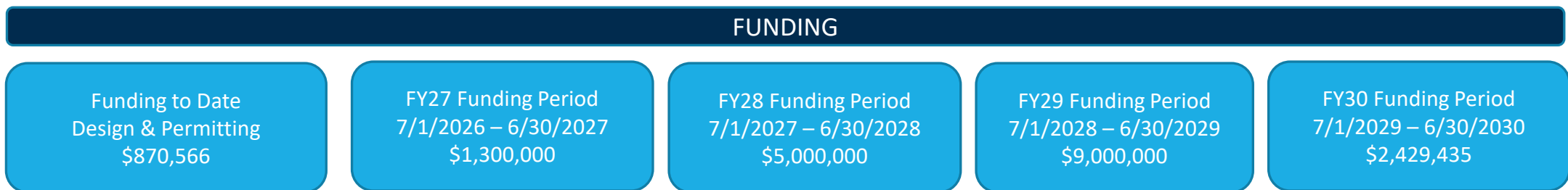
freeman | french | freeman



① MECHANICAL LEVEL 1 DUCTWORK PLAN
 1/8" = 1'-0"

Funding to date

Appropriations, Encumbrance and Expended				
Funding	Appropriation	Encumbrance	Expended	Balance
Act 83 Sec. 56(a) ARPA Funding	\$696,966	\$52,064	\$401,455	\$243,447
FY2020 Bond	\$18,760	\$0	\$18,760	\$0
FY2021 Bond	\$4,840	\$0	\$4,840	\$0
FY2024 Cash	\$150,000	\$500	\$46,304	\$103,196
Total	\$870,566	\$52,564	\$471,358	\$346,643



FY27 Capital Bill Adjustment Request \$1,300,000