

District Spending Analysis

Senate Committee on Finance

Julia Richter, Senior Fiscal Analyst, Joint Fiscal Office

March 26, 2025



JFO

1 Baldwin Street • Montpelier, VT 05633-5701 • (802) 828-2295 • <https://ljfo.vermont.gov>

The Joint Fiscal Office (JFO) is a nonpartisan legislative office dedicated to producing unbiased fiscal analysis – this presentation is meant to provide information for legislative consideration, not to provide policy recommendations



Outline

- Review of underlying pieces of analysis
- Analysis of education spending and the Administration's proposed foundation formula amount in current law districts
- Pupil Analysis of Bongartz Potential Supervisory District (SD) and Supervisory Union (SU) Configurations
- Analysis of Education Spending and the Administration's Proposed Foundation Formula Amount in Bongartz Potential SD and SU Configurations
- Considerations



Vermont's Education Spending

- “Education spending” is a technical term used in Vermont education finance
 - This refers to all funds a school district has in its local budget, net of offsetting revenues (e.g. State and Federal categorical aid, prior year surplus or deficits, district reserves, etc.)
- Statewide aggregate education spending is referred to as the “Education Payment”
- In fiscal year 2025, the Education Payment is approximately \$1.88 billion



Vermont's Long-term Average Daily Membership (LTADM)

- Long-term Average Daily Membership (LT ADM) is essentially the count of students in a school or school district
 - Specifically, it is the average of the district's Average Daily Membership (ADM) over two years, plus the full-time equivalent enrollment of State-placed students for the most recent of the two years
- Fiscal year 2025 LT ADM is 83,368
- LT ADM has declined over time



Determination of the Foundation Amount

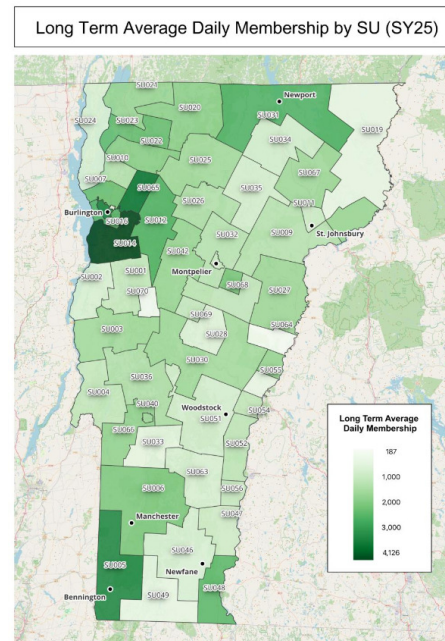
- The Administration's proposal calculates the foundation amount based on several factors:
 - The uniform base amount of \$13,200;
 - The number of students in a district (as measured in LT ADM); and
 - The number of weights in a district
- The following analysis compares the foundation amounts presented in the Governor's transformation plan and fiscal year 2025 education spending
 - The foundation amounts reflective of the Governor's proposal were presented by the Agency of Education (AOE) in their "Streamlined Model V03"
 - This analysis follows comparisons presented by AOE that analyze the foundation amount compared to education spending



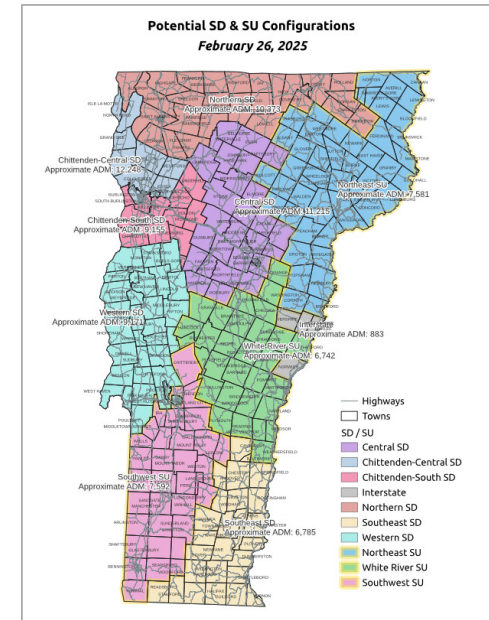
School Districts

- Under current law, Vermont has 52 Supervisory Districts (SDs) and Supervisory Unions (SUs), and 119 school districts.
- The Bongartz Potential Supervisory District (SD) and Supervisory Union (SU) Configuration has 10 SDs and SUs.

FY24 Supervisory Unions*



Bongartz Potential Supervisory District (SD) and Supervisory Union (SU) Configuration



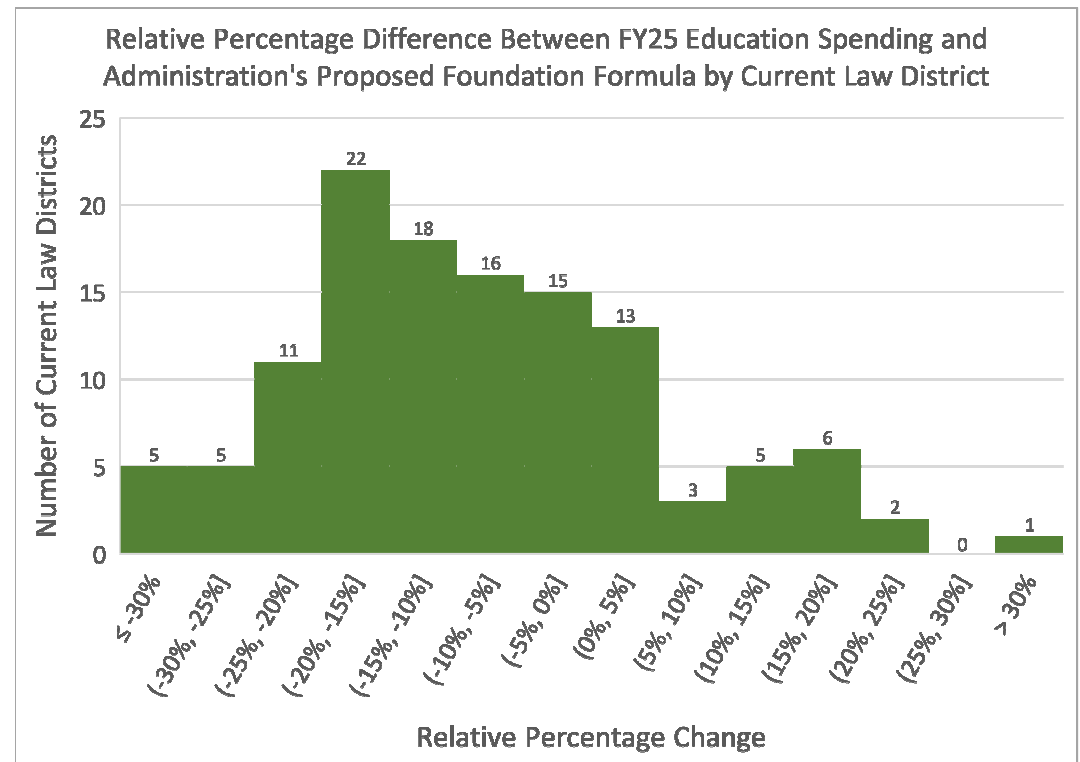
Note: These maps have been copied from Governor Scott's "Education Transformation Proposal", and from resources presented by Senator Bongartz in the Senate Education Committee. The link to the slides from which these maps have been copied are included at the end of this slide deck.

Analysis of Education Spending and the Administration's Proposed Foundation Formula Amount in Current Law Districts



Estimated Relative Percentage Difference Across Current Districts

- Approximately 25% of the State's current law districts would have an estimated relative increase from the foundation amount when compared to the district's fiscal year 2025 education spending
- Approximately 75% of the State's current law districts would have an estimated relative decrease from the foundation amount when compared to the district's fiscal year 2025 education spending



Estimated Relative Percentage Difference Across Current Districts by LT ADM

- Approximately 20% of the State's LT ADM would be in a district that is estimated to have a relative *increase* from the foundation amount when compared to the district's fiscal year 2025 Education Spending
- Approximately 80% of the State's LT ADM would be in a district that is estimated to have a relative *decrease* from the foundation amount when compared to the district's fiscal year 2025 Education Spending

Relative Difference Between FY25 Education Spending and Administration's Proposed Foundation Amount	Sum of LT ADM	Percent of the State's LT ADM
Lower than -30%	1,220	1%
-30% to -25%	1,490	2%
-25% to -20%	14,600	18%
-20% to -15%	20,010	24%
-15% to -10%	15,160	18%
-10% to -5%	8,550	10%
-5% to 0%	6,090	7%
0% to 5%	9,000	11%
5% to 10%	1,200	1%
10% to 15%	1,700	2%
15% to 20%	4,050	5%
20% to 25%	60	0.1%
Greater than 30%	50	0.1%
Total	83,352	100%

Notes: LT ADM counts have been rounded to the nearest 10. Numbers will not sum because some districts have been suppressed for data sensitivity.

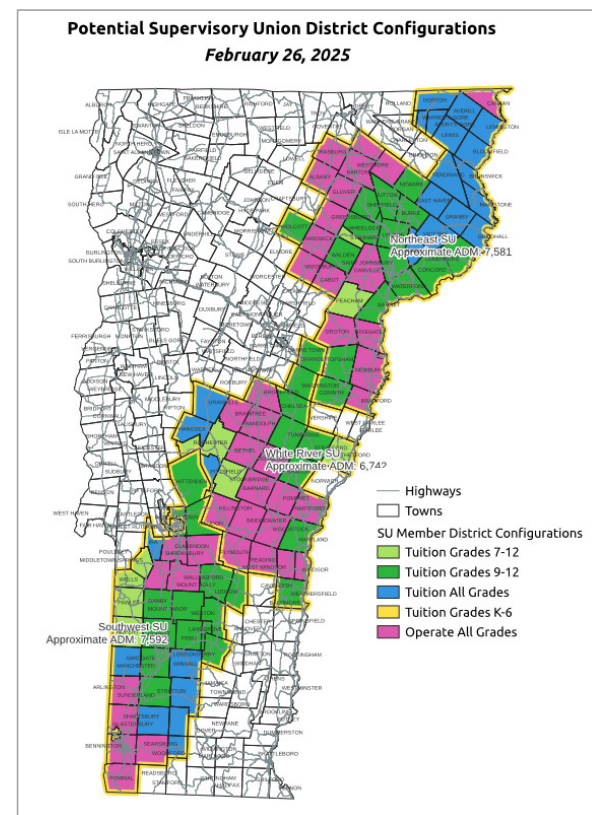
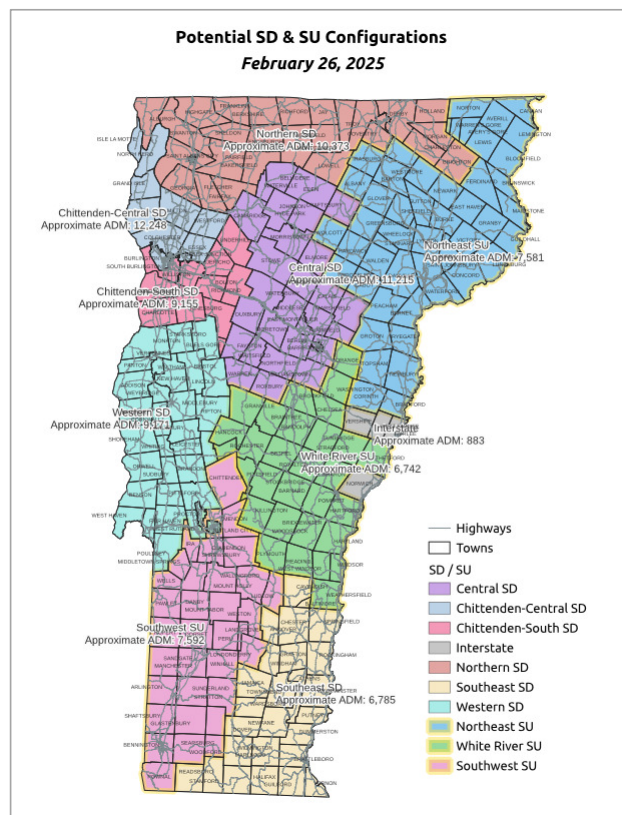


Pupil Analysis of Bongartz Potential Supervisory District (SD) and Supervisory Union (SU) Configurations



Bongartz Potential SD and SU Configurations

- The following analysis examines the Bongartz potential SD and SU configurations according to the maps presented in the Senate Committee on Education
- For simplicity, this analysis focuses on the SD/SU level
 - This analysis does not examine districts within SUs



Note: These configurations and maps were presented to the Senate Committee on Education. Relevant links can be found on the resources slide of this presentation.



JFO

1 Baldwin Street • Montpelier, VT 05633-5701 • (802) 828-2295 • <https://ljfo.vermont.gov>

12

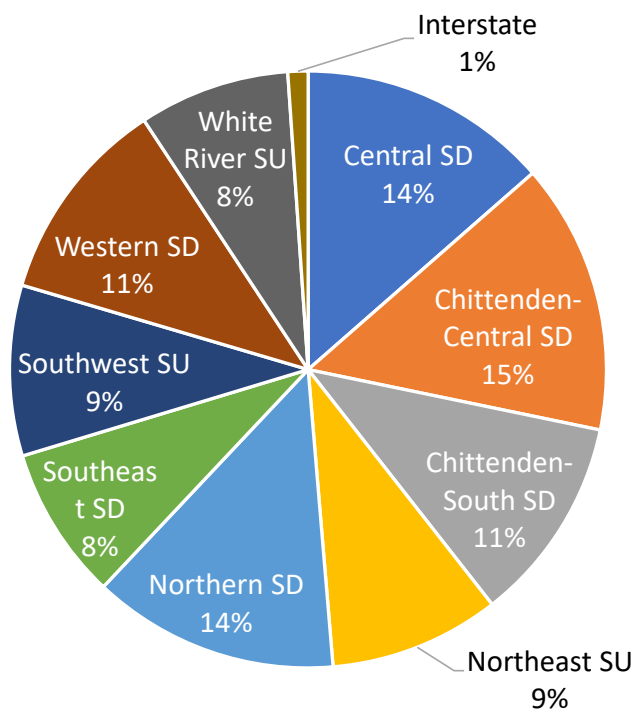
Bongartz Potential SD and SU Configurations – Total LT ADM

- The share of the State's LT ADM varies across the school districts
 - Aside from “Interstate”, the “White River SU” has the lowest percentage of total LT ADM at 8%
 - “Chittenden-Central SD” has the highest percentage of total LT ADM at 15%

Bongartz Potential SD & SU Configurations	LT ADM Count	Percent of State's LT ADM
Central SD	11,310	14%
Chittenden-Central SD	12,244	15%
Chittenden-South SD	9,301	11%
Northeast SU	7,710	9%
Northern SD	11,146	13%
Southeast SD	6,916	8%
Southwest SU	7,700	9%
Western SD	9,316	11%
White River SU	6,828	8%
Interstate	898	1%
Total	83,368	100%



Total LT ADM Bongartz Potential SD and SU Configurations (Fiscal Year 2025)



Bongartz Potential SD and SU Configurations – Count of Students from Different Grades

- The largest cohort of students is students in grades K-5
 - This is also the widest range from grades
- Student counts in certain grades provide an overview of the student body.

Bongartz Potential SD & SU Configurations	Student Counts in Certain Grades				Total
	PreK	Elementary: K-5	Middle: 6-8	High: 9-12	
Central SD	1,003	4,558	2,415	3,231	11,207
Chittenden-Central SD	1,105	4,899	2,489	3,614	12,107
Chittenden-South SD	888	3,741	1,858	2,721	9,208
Northeast SU	561	2,953	1,672	2,471	7,657
Northern SD	995	4,661	2,396	2,992	11,044
Southeast SD	586	2,814	1,431	2,017	6,848
Southwest SU	545	2,969	1,588	2,523	7,626
Western SD	782	3,827	1,933	2,741	9,282
White River SU	574	2,818	1,439	1,975	6,805
Interstate	75	352	201	269	898
Total	7,114	33,592	17,421	24,555	82,682

Note: For data privacy, EEE student counts have been suppressed.



Bongartz Potential SD and SU Configurations – Percent of Students from Different Grades

- Across SD and SU configurations, the state share of students in certain grades is relatively uniform

Bongartz Potential SD & SU Configurations	Percentage of State's Students in Certain Grades				Total
	PreK	Elementary: K-5	Middle: 6-8	High: 9-12	
Central SD	14%	14%	14%	13%	14%
Chittenden-Central SD	16%	15%	14%	15%	15%
Chittenden-South SD	12%	11%	11%	11%	11%
Northeast SU	8%	9%	10%	10%	9%
Northern SD	14%	14%	14%	12%	13%
Southeast SD	8%	8%	8%	8%	8%
Southwest SU	8%	9%	9%	10%	9%
Western SD	11%	11%	11%	11%	11%
White River SU	8%	8%	8%	8%	8%
Interstate	1%	1%	1%	1%	1%
Total	100%	100%	100%	100%	100%

Note: for data privacy, EEE student counts have been suppressed.



Bongartz Potential SD and SU Configurations – Students from Economically Disadvantaged Backgrounds

- The share of LT ADM identified from economically disadvantaged backgrounds varies by region
- Within regions:
 - “Southeast SD” has the highest percentage
 - Aside from “Interstate”, “Chittenden-South SD” has the lowest percentage
- Statewide:
 - “Northern SD” has the highest share
 - “Chittenden-South SD” has the lowest share

Bongartz Potential SD & SU Configurations	SD&SU's Students from Economically Disadvantaged Backgrounds		Percentage of State's Total Students from Economically Disadvantaged Backgrounds
	Count of LTADM	Percentage of Region's LTADM	
Central SD	4,828	43%	13%
Chittenden-Central SD	4,762	39%	13%
Chittenden-South SD	2,048	22%	6%
Northeast SU	4,130	54%	11%
Northern SD	5,815	52%	16%
Southeast SD	3,742	54%	10%
Southwest SU	3,610	47%	10%
Western SD	4,199	45%	12%
White River SU	2,874	42%	8%
Interstate	196	22%	1%
Total	36,203	43%	100%



Bongartz Potential SD and SU Configurations – English Learner Students

- The share of LT ADM identified as English Learners varies by region
- Among regions:
 - “Chittenden-Central SD” has the highest percentage
- Statewide:
 - “Chittenden-Central SD” has the highest share

Bongartz Potential SD & SU Configurations	SD & SU's English Learner Students		Percentage of State's Total English Learner Students
	Count of LTADM	Percentage of Region's LTADM	
Central SD	138	1%	7%
Chittenden-Central SD	1,052	9%	56%
Chittenden-South SD	298	3%	16%
Northeast SU	***	***	***
Northern SD	74	1%	4%
Southeast SD	92	1%	5%
Southwest SU	58	1%	3%
Western SD	95	1%	5%
White River SU	39	1%	2%
Interstate	***	***	***
Total	1,873	2%	100%

*Note: suppressed counts are indicated as “***”.*



Analysis of Education Spending and the Administration's Proposed Foundation Formula Amount in Bongartz Potential SD and SU Configurations



Analyzing Relative Percentage Differences

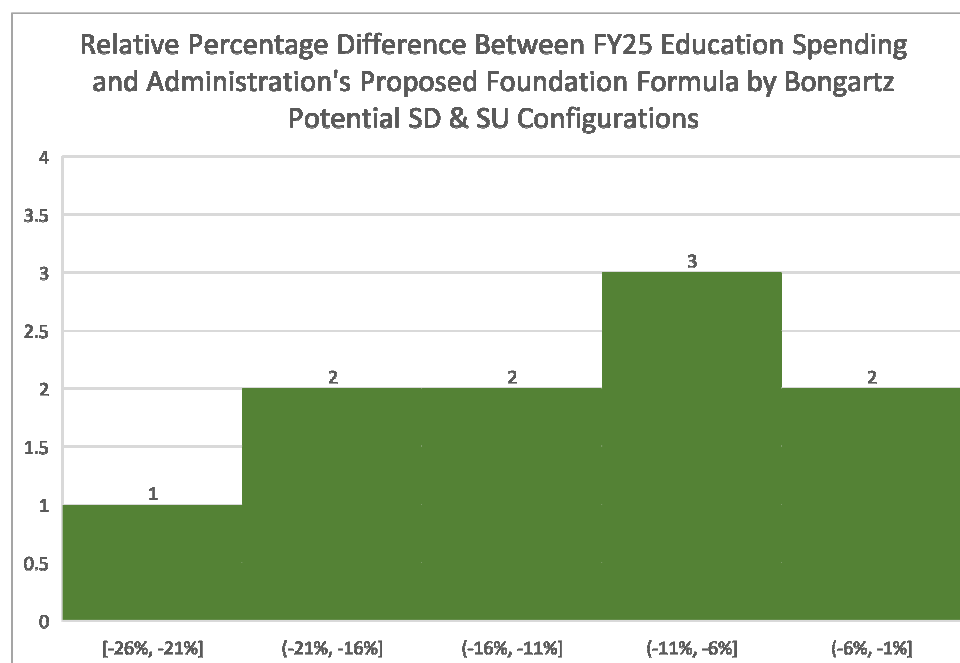
- Across this analysis, the same underlying spending amounts are used – fiscal year 2025 Education Spending and the Administration's proposed foundation amount
 - The following review shows how changes would be reflected in the Bongartz Potential SD and SU Configurations



Estimated Relative Percentage Difference Across Bongartz Potential SD and SU Configurations

Under the Bongartz potential SD and SU Configurations:

- All SDs and SUs would have an estimated relative *decrease* from the foundation amount when compared to the combined fiscal year 2025 Education Spending of that SU/SD



Note: all groups are below 0% and differ from those on Slide 8.



Estimated Relative Percentage Difference Across Bongartz Potential SD and SU Configurations

Under the Bongartz Potential SD and SU Configurations:

- None of the State's LT ADM would be in a SD or SU that is estimated to have a relative *increase* from the foundation amount when compared to the district's fiscal year 2025 Education Spending
- All of the State's LT ADM would be in a SD or SU that is estimated to have a relative *decrease* from the foundation amount when compared to the district's fiscal year 2025 Education Spending

Relative Difference Between FY25 Education Spending and Administration's Proposed Foundation Amount	Sum of LT ADM	Percent of the State's LT ADM
"-25% to -30%"	898	1%
"-15% to -20%"	21,544	26%
"-10% to 15%"	25,054	30%
"-5% to -10%"	17,026	20%
"0% to -5%"	18,846	23%
Total	83,352	100%



Considerations



JFO

1 Baldwin Street • Montpelier, VT 05633-5701 • (802) 828-2295 • <https://ljfo.vermont.gov>

Considering Spending Differences Across Different District Configurations

- Across this analysis, the same underlying spending amounts have been used – fiscal year 2025 Education Spending and the Administration’s proposed foundation amount
- Recall that under current law, there are 119 school districts, while the Bongartz configuration has 10 SDs and SUs.
- The relative difference experienced within a district depends on the configuration of the district
 - Under current law districts, there is a wider variance in relative change than in the Bongartz Potential SD and SU Configurations

Relative Difference Between FY25 Education Spending and Administration’s Proposed Foundation Amount	Current Law Districts		Bongartz Potential SD & SU Configurations	
	Sum of LT ADM	Percent of the State’s LT ADM	Sum of LT ADM	Percent of the State’s LT ADM
Lower than -30%	1,220	1%	-	-
-30% to -25%	1,490	2%	900	1%
-25% to -20%	14,600	18%	-	-
-20% to -15%	20,010	24%	21,500	26%
-15% to -10%	15,160	18%	25,100	30%
-10% to -5%	8,550	10%	17,000	20%
-5% to 0%	6,090	7%	18,800	23%
0% to 5%	9,000	11%	-	-
5% to 10%	1,200	1%	-	-
10% to 15%	1,700	2%	-	-
15% to 20%	4,050	5%	-	-
20% to 25%	60	0.1%	-	-
Greater than 30%	50	0.1%	-	-
Total	83,368	100%	83,368	100%

Notes: LT ADM counts have been rounded to the nearest 10. Numbers will not sum because of rounding, and because some districts are suppressed for data sensitivity.



Considerations

- This analysis uses data for fiscal year 2025 and does not address changes to student counts or circumstances in future years
 - Student circumstances and counts will change in future years, and those changes are unlikely to be uniform across the state
- There are multiple ways to examine policy and funding changes
 - School district configurations impact relative differences in funding
 - This analysis did not review spending per pupil or spending per weighted pupil



Questions?



Resources

- Governor Scott's "Education Transformation Proposal" Slides:
 - <https://ljfo.vermont.gov/assets/Subjects/2025-Governor-Scotts-Education-Transformation-Proposal/Slides-Caucus-of-the-Whole.pdf>
- Bongartz Potential SD and SU Configurations:
 - <https://legislature.vermont.gov/Documents/2026/Workgroups/Senate%20Education/Bills/DR%2025-0979/Maps/W~Seth%20Bongartz~Potential%20School%20District-Supervisory%20Union%20Map~3-18-2025.pdf>
 - <https://legislature.vermont.gov/Documents/2026/Workgroups/Senate%20Education/Bills/DR%2025-0979/Maps/W~Seth%20Bongartz~Potential%20Supervisory%20Union%20Map~3-18-2025.pdf>

