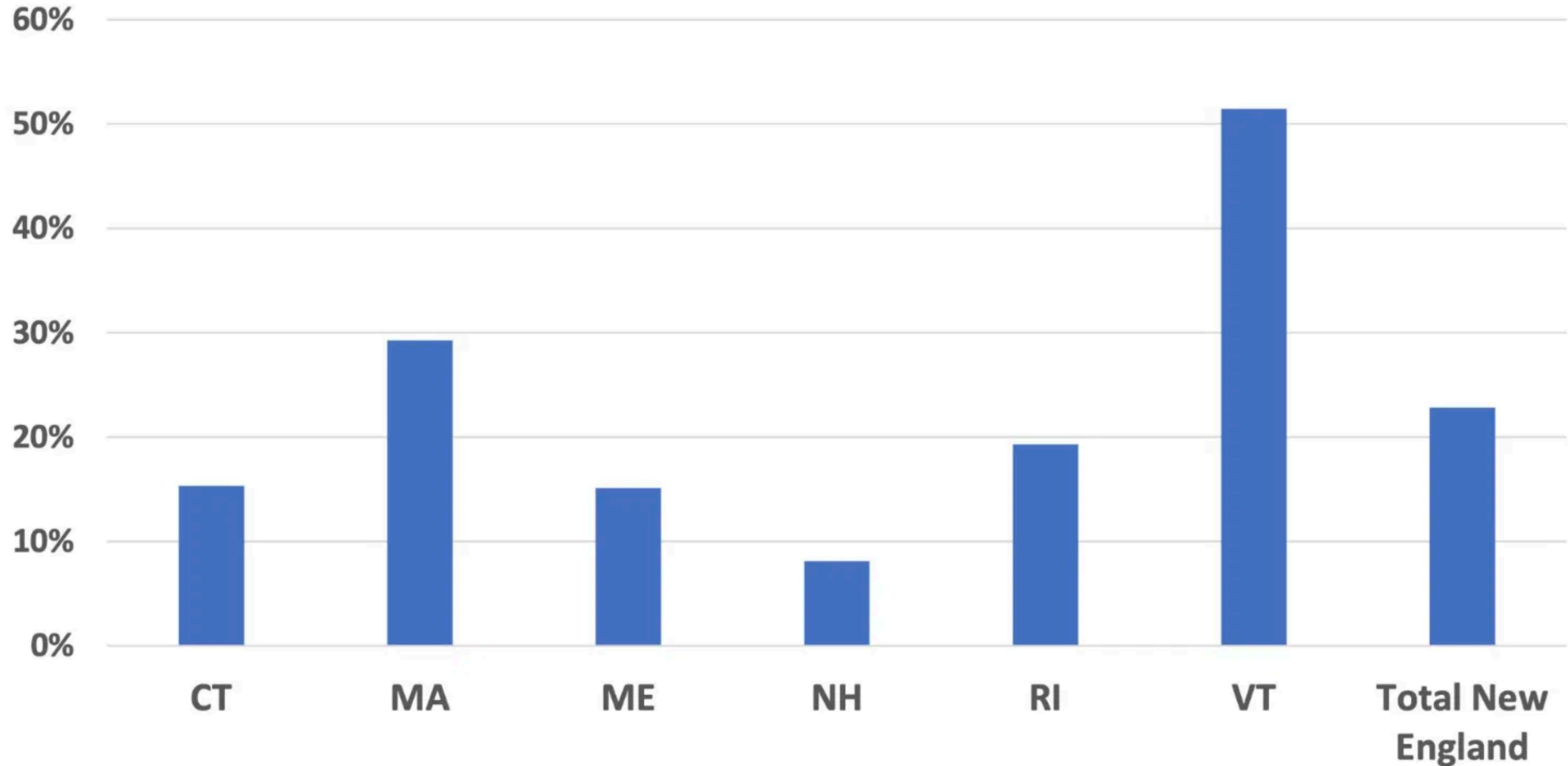


# **Protecting Agricultural Lands**

**Senate Agriculture Committee Feb. 25, 2026**

Annette Smith, Executive Director, Vermonters for a Clean Environment

## Solar Generation Capacity as % of Peak Load New England States Solar Capacity end of 2022

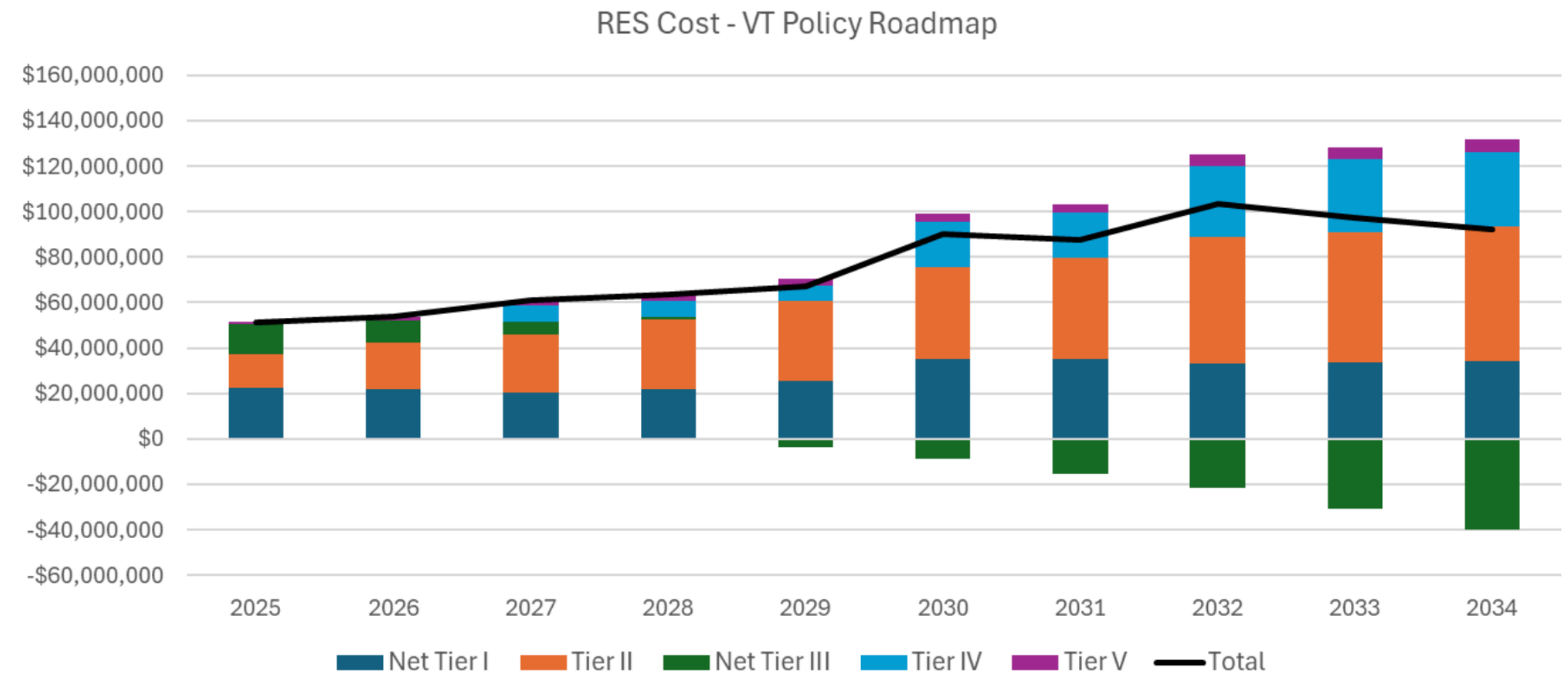


<https://www.vce.org/issues/public-utility-commission>

# Renewable Energy Standard (RES) Costs Expected to Increase Over Time as Requirements Grow

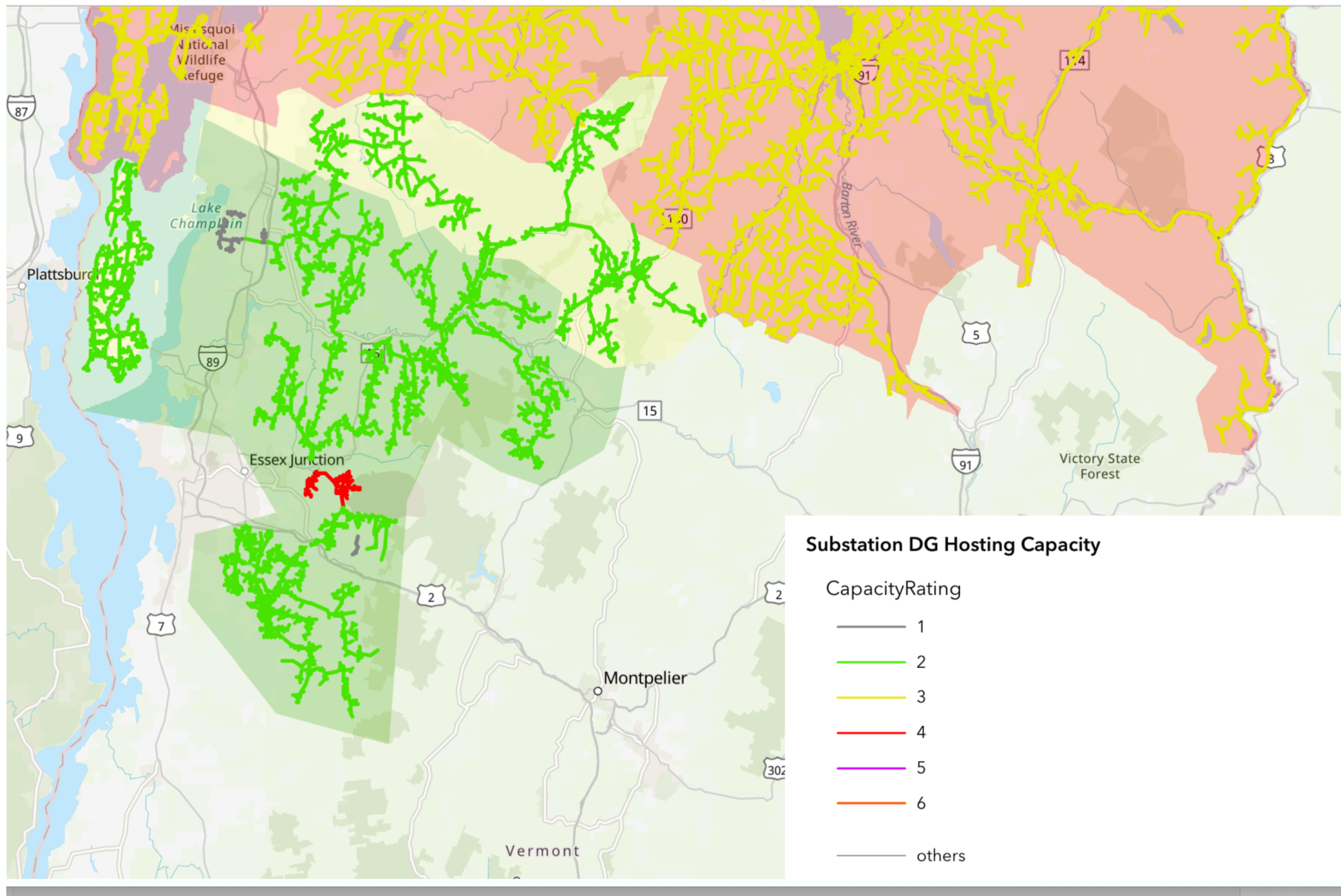
**30 V.S.A. § 202b (e)(7)(B)** calls for the Department of Public Service to complete a “Consolidated Model” that projects the impacts of the RES at least 10 years ahead, including three scenarios of results based on high, mid-range, and low energy price forecasts. The results show a 6-8% rate impact from the RES.

As a reference point, 2023 RES costs have been calculated to be \$32 million.



*Note – Tier III programs build load and generate additional retail sales revenues leading to a net cost reduction over time*

<https://legislature.vermont.gov/Documents/2026/Workgroups/House%20Energy%20and%20Digital/Energy/W~TJ%20Poor~Vermont%20Electricity%20Policies%20and%20Programs%20Overview~2-12-2025.pdf>



<https://experience.arcgis.com/experience/94ecec61c75c54ad999c0629d80cb7354/>

# Essex Capital Partners MA, 1.89 MW



19

[https://www.vtce.org/GOODandBAD\\_SOLAR.pdf](https://www.vtce.org/GOODandBAD_SOLAR.pdf)

# Barton Solar

## Essex Capital Partners MA, 1.89 MW



20

[https://www.vtce.org/GOODandBAD\\_SOLAR.pdf](https://www.vtce.org/GOODandBAD_SOLAR.pdf)













**5:21-cv-00025-mkl** Barton Solar, LLC v. RBI Solar, Inc. et al

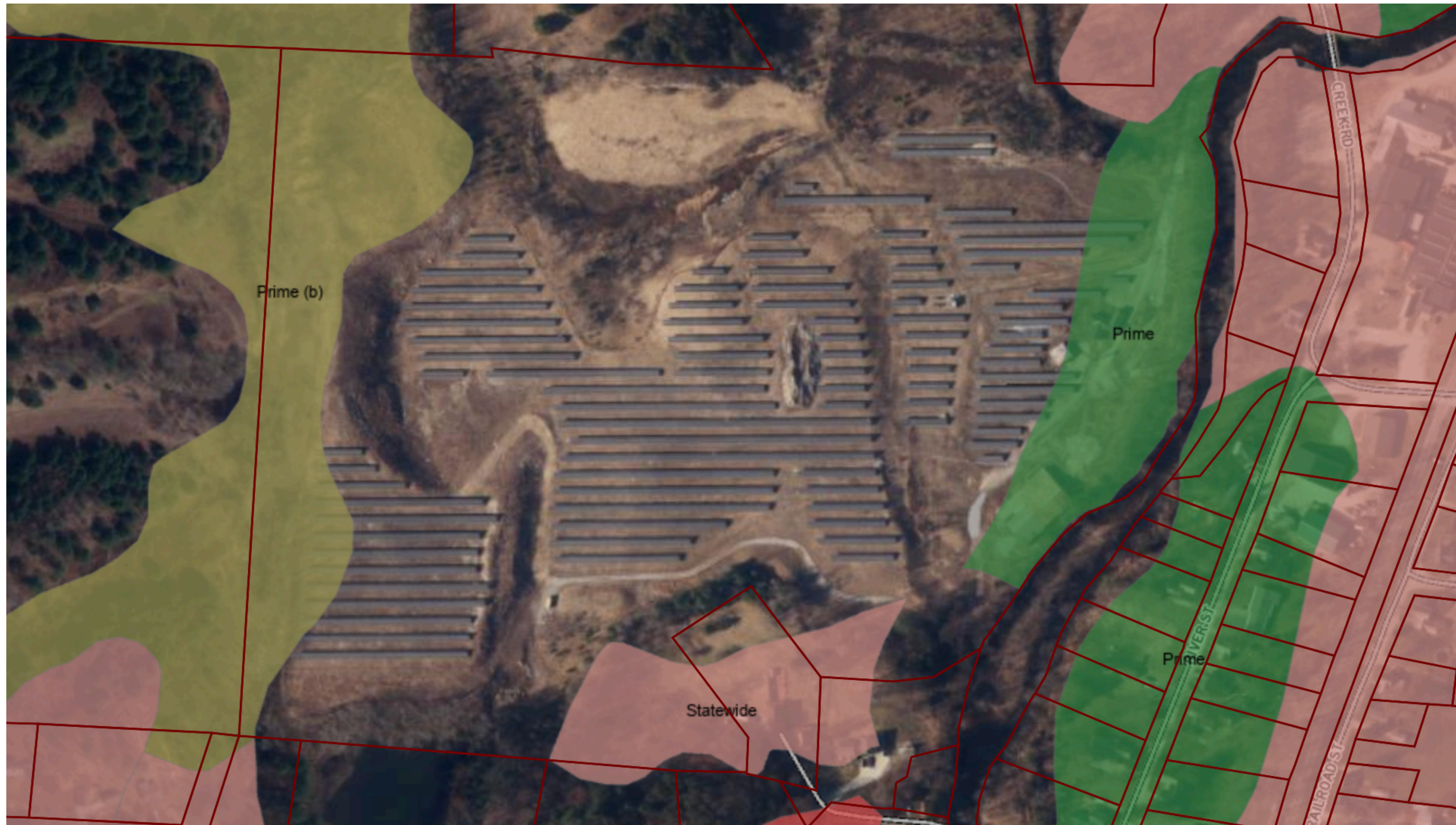
Mary Kay Lanthier, presiding

**Date filed:** 02/05/2021

**Date of last filing:** 02/18/2026

## History

<b>Doc. No.</b>	<b>Dates</b>	<b>Description</b>
<a href="#">1</a>	<i>Filed &amp; Entered:</i> 02/05/2021	 Complaint
<a href="#">2</a>	<i>Filed &amp; Entered:</i> 02/05/2021	 Jury Demand
<a href="#">3</a>	<i>Filed &amp; Entered:</i> 02/15/2021 <i>Terminated:</i> 02/16/2021	 Motion to Amend/Correct
4	<i>Filed &amp; Entered:</i> 02/16/2021	 Order on Motion to Amend/Correct
<a href="#">5</a>	<i>Filed &amp; Entered:</i> 02/24/2021	 Amended Complaint
<a href="#">6</a>	<i>Filed &amp; Entered:</i> 02/25/2021	 Waiver of Service Returned Executed
<a href="#">7</a>	<i>Filed &amp; Entered:</i> 02/25/2021	 Waiver of Service Returned Executed
<a href="#">8</a>	<i>Filed &amp; Entered:</i> 03/11/2021	 Notice of Appearance
<a href="#">9</a>	<i>Filed &amp; Entered:</i> 03/11/2021	 Notice of Appearance
<a href="#">10</a>	<i>Filed &amp; Entered:</i> 03/15/2021 <i>Terminated:</i> 03/15/2021	 Motion for Admission Pro Hac Vice
11	<i>Filed &amp; Entered:</i> 03/15/2021	 Order on Motion for Admission Pro Hac Vice
<a href="#">12</a>	<i>Filed &amp; Entered:</i> 04/16/2021 <i>Terminated:</i> 07/22/2021	 Motion to Dismiss for Failure to State a Claim



Prime Ag Soils and MHG Solar, Wallingford, Vermont

<https://anrmaps.vermont.gov/websites/anra5/>

# Uniform Capacity Tax

Fiscal Year	Uniform Capacity Tax filers	Uniform Capacity Tax revenue	Total kW capacity of solar facilities as certified on CPG
FY 2021	208	\$880,184	220,040
FY 2022	221	\$916,831	229,089
FY 2023	223	\$914,188	227,759
FY 2024	248	\$993,490	244,810
FY 2025	254	\$1,015,661	252,989

Source: VT Department of Taxes SCT-603 as of 10/07/2025

914 Should Have Filed UCT Total KW	384624.44
+Ludlow “Coolidge” Solar	20,000
Total kW x \$4	404624.44
Should have been collected	x \$4
	1,618,497.76

Based on data from Vermont Department of Public Service