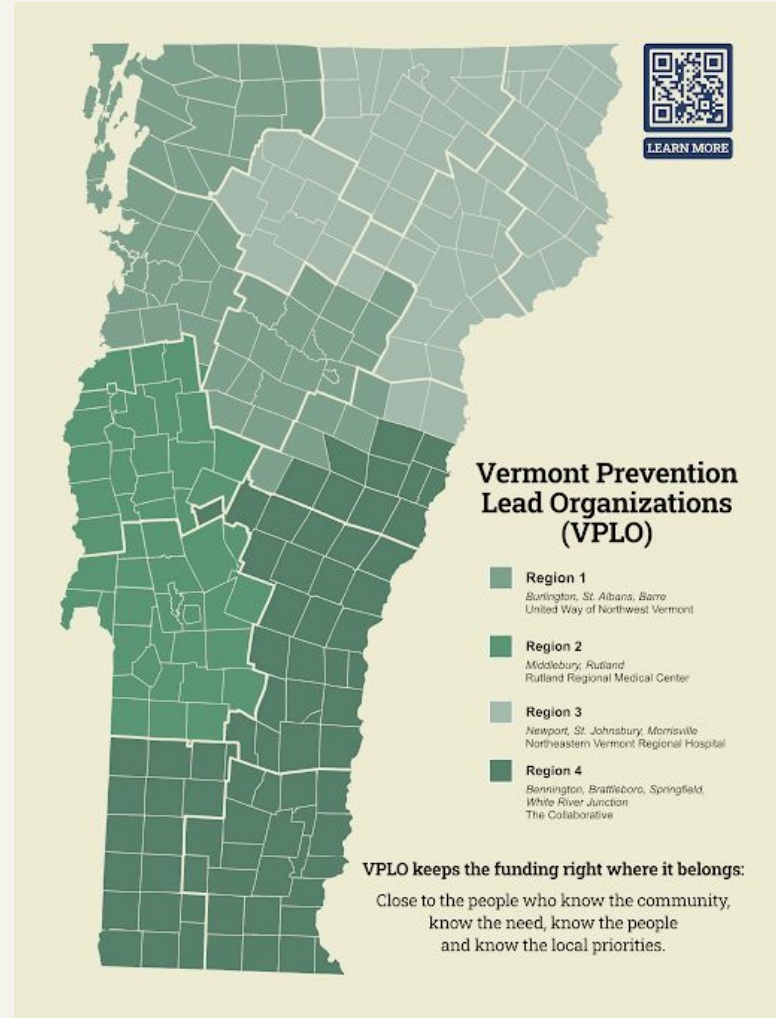




With the guiding vision that everyone is a part of a healthy, safe, and supportive community and a mission to empower healthy youth, families, and communities, The Collaborative has been operating as a 501c3 nonprofit serving Windham, Windsor, and Bennington counties in Vermont since 1999.

Vermont Prevention Lead Organizations

VPLO were established in July 2023 to ensure coordinated prevention work statewide. They serve as fiscal agents to community organizations, coordinate through a regional advisory structure and work with district partners to allocate substance misuse prevention funding in their region. Allocations are based on community assessments, risk and protective factors, and community readiness.





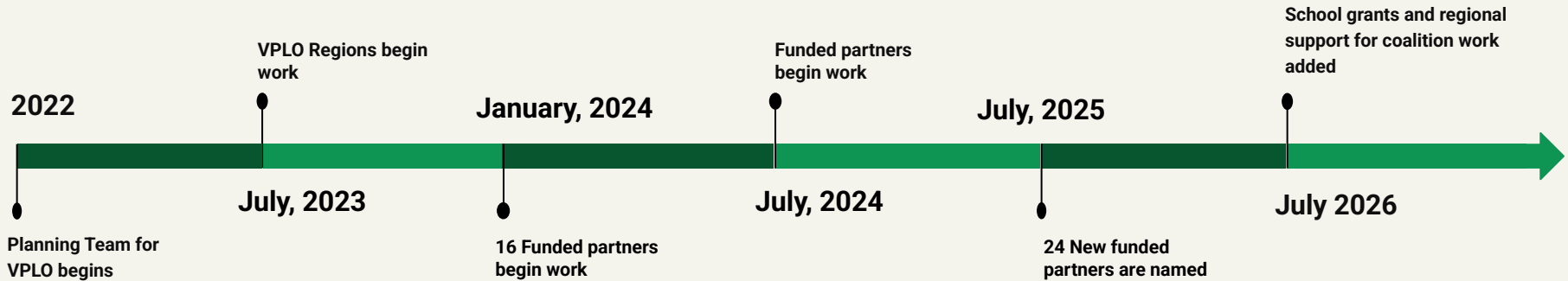
Prevention Lead Region 4

A High-Level Look at Our Work and Impact

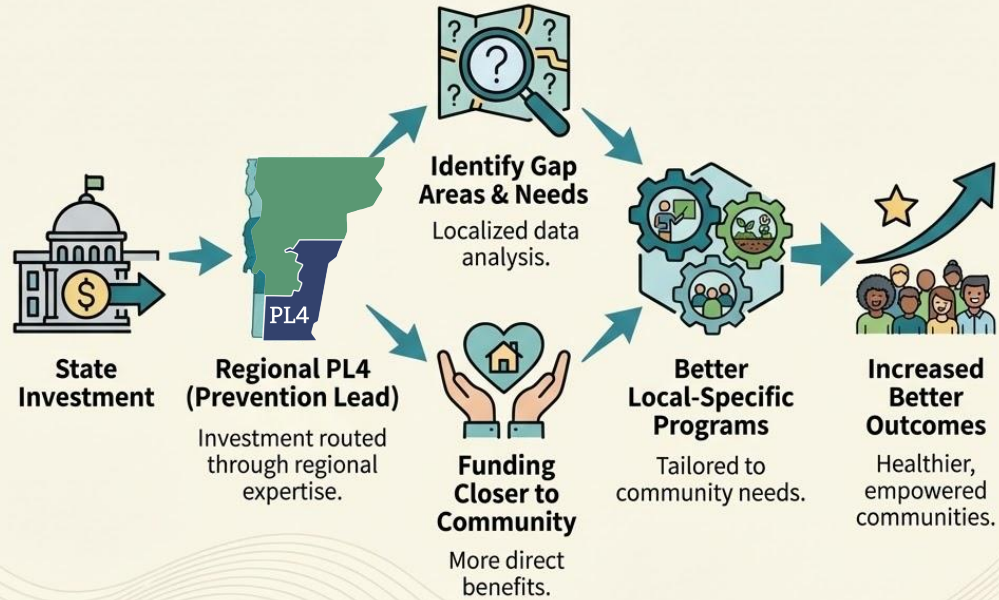
Bennington, Brattleboro, Springfield & White River Junction Health Districts

www.pl4.org

Timeline



From Investment to Impact: The Regional PL4 Model



This is an **ecosystem**
with every part supporting
the others.



Communities and Individuals



Partners:
Funded/Unfunded



Networks:
Prevention Coordination Team/District Advisories/
Prevention Consultants



PL4 Leads:
PL4 Administrative Team/The Collaborative/
Regional Advisory Committee



About PL4

- **Core Focus Areas:**
 - Substance Misuse Prevention
 - Youth Engagement & Empowerment
 - Mental Health & Well-Being
 - Community Partnerships & Capacity Building
- **Priority Areas**
 - Foster Belonging and Well-Being
 - Combat Loneliness and Cultivate Connection
 - Increase Understanding of Prevention \ The Community's Health
 - Increase Awareness of Resources \ Connection to Care
 - Utilize Collective Impact for Community Transformation



3 Funding Opportunities

Each address our values and requirements at different levels



OPERATIONAL SUPPORT 3 YEARS

Longstanding
Organizations Working
Primarily in Prevention.
Must meet specific
criteria for eligibility.
Can be non competitive
after a LOI.



PROJECT BASED SUPPORT 3 YEARS

Funding is allotted for a
specific strategy
including building
capacity.
Orgs who apply for
Operational Support can
also apply here.



COMMUNITY MICRO FUNDING SHORT TIME FRAME

Released locally to PCT
organizations so they
can release at the
district level to support
community-level
projects. Small
amounts, simple
application..

Funded Partners

Health District	# of Funded Partners
Bennington	4
Brattleboro	6
Springfield	4
White River Junction	4
All Districts	6

Priority Areas	# of Funded Partners
Foster Belonging and Well-Being	15
Combat Loneliness and Cultivate Connection	5
Increase Understanding of Prevention \ The Community's Health	7
Increase Awareness of Resources \ Connection to Care	7
Utilize Collective Impact for Community Transformation	11

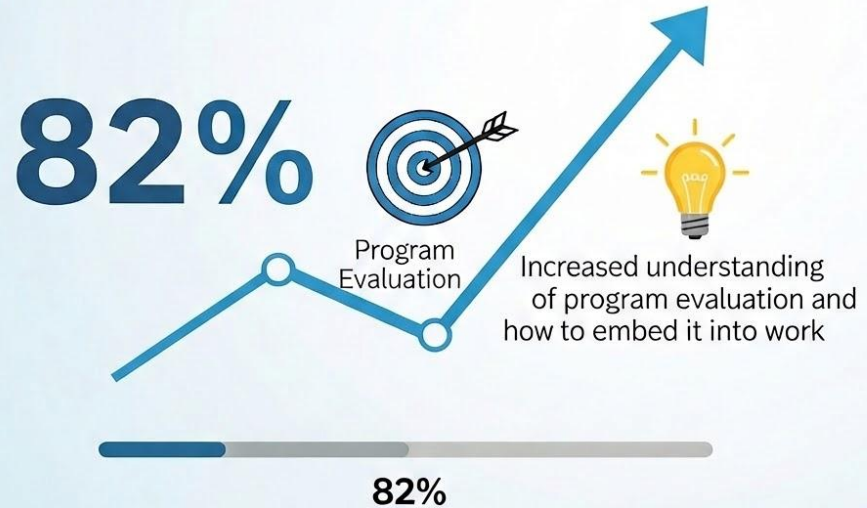
Funded Partners



VERMONT PREVENTION MODEL

Outcomes

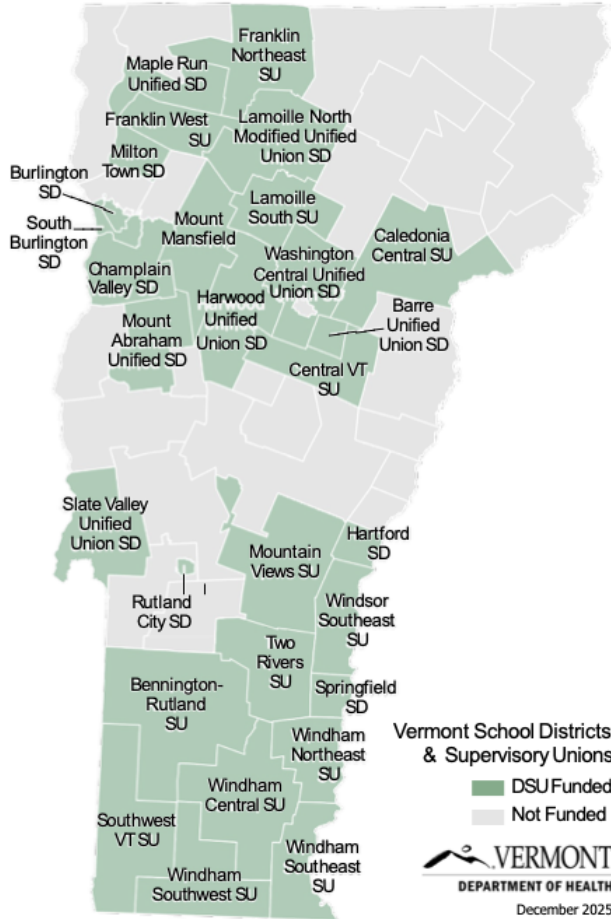
Through targeted training and technical assistance, PL4 empowered funded partners to integrate Prevention Science into their operations — bridging the gap between evaluation data and program design to drive better outcomes.



FY27

School Based Grants

FY26 School-Based Substance Use Prevention Services Grant



School-Based Initiatives



Screening



Capacity Building



Staff Training



Educational Support Groups

Student assistant professionals (SAPs) often coordinate prevention initiatives in schools. Looking ahead: VDH will continue to standardize the SAP role.

PL4 Goals in action

- **Foster Belonging and Well-Being**
- **Combat Loneliness and Cultivate Connection**
- **Increase Understanding of Prevention \ The Community's Health**
- **Increase Awareness of Resources \ Connection to Care**
- **Utilize Collective Impact for Community Transformation**

Vermont's Investment in PL4



YOUTH



Youth Center Success Across the Region



Quotes from the Chester Teen Center



"For some kids in particular, you can tell that the teen center made a really big difference in their lives this past year. If they've been going through a lot or having a hard time at home, they come here because they know it's a safe space."

~ Chester Teen Center participant



"The teen center is a very fun place to hang out with friends and make new ones! There has never been a day where I said "oh I'm bored" at the teen center. It's a very welcoming place for teens to hang out."

~ Chester Teen Center participant

"[I like the teen center because] it's a reason to get out of the house. I get to see my friends, the adults are really cool, and I feel like I can just relax and be myself. The teen center is like a second home to me."

~ Chester Teen Center participant

"When I turn 21 I'm coming back here to work at the Chester Teen Center! This would be such a fun job to have."

~ Chester Teen Center participant

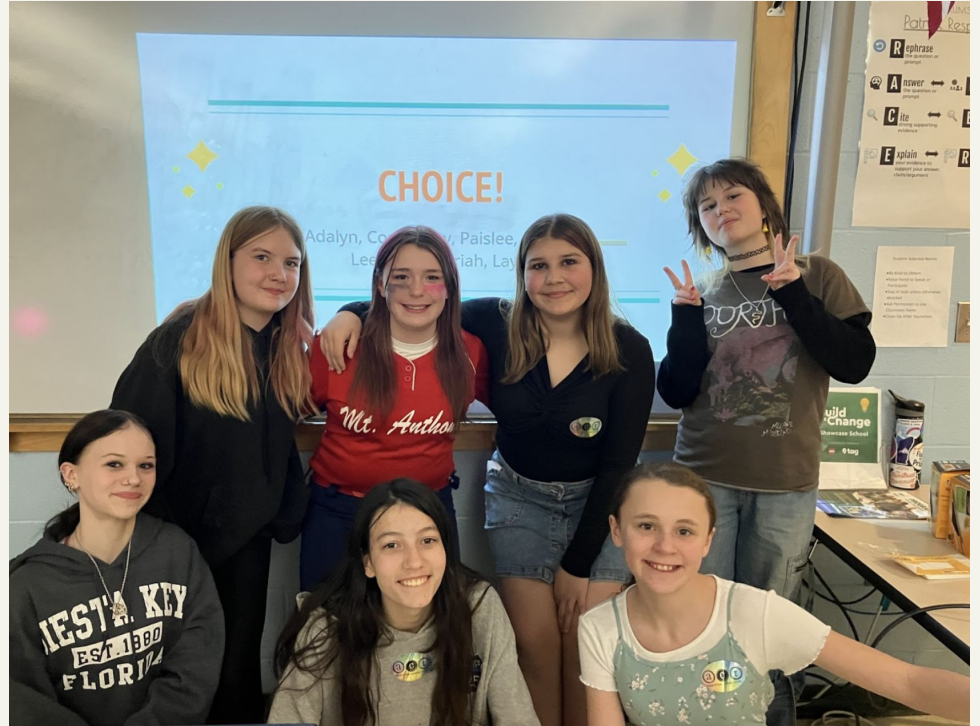
Vermont's Investment in PL4



Our prevention-funded youth space is more than a hangout—it's a life-changing support system. By pairing trained staff with a focus on protective factors, we've created a "family" where disconnected youth find their voice. Whether they are tending the community garden or accessing our student-led hygiene closet, local adolescents are finding the belonging they need to thrive.

Vermont's Investment in PL4

C.H.O.I.C.E (Choose How Our Influence Changes Everything) are youth-led prevention teams at Mt. Anthony Middle and High Schools with the goal of promoting healthy behaviors among classmates and improving the school climate and broader community. Last June they presented to the Town of Bennington Select Board and shared recommendations on how municipalities can support healthy youth- such as liaising with a youth advisory. The Select Board agreed, and the Bennington Youth Council was born- the third youth council in the state!



Vermont's Investment in PL4

At BAPC, youth are not just participants — they are planning meetings, facilitating events, analyzing data, and leading community initiatives that strengthen both schools and the broader community. These investments are building the next generation of civic leaders while making our community safer, more connected and more responsive to the voices of young people.



“The Youth Council has shown me how to take initiative and trust the voices of youth in Brattleboro. I’ve learned alongside my peers that our voices together can make a change.” ~ Youth Member

Vermont's Investment in PL4



“[At Resilience Through Understanding], we explore how to live by our values, seek healthier ways to cope with stress, make thoughtful decisions, and surround ourselves with positive influences.”

- 9th grader RTU participant



Vermont's Investment in PL4



375 YOUTH
PARTICIPATING
ACROSS **10** LOCAL
SCHOOLS

50 SCHOOL & COMMUNITY
RTU REPRESENTATIVES



10 INCENTIVE
PARTNERS



(All Returning)

Evaluation

Quantity

Quality

Effort

How Much We Do

How much service did we deliver?

- #Customers served
- # Services/Activities

How Well We Do It

How well did we do it?

% Services/activities performed well

Effect

Is Anyone Better Off?


What quantity/quality of change for the better did we produce?

#/% with improvement in:

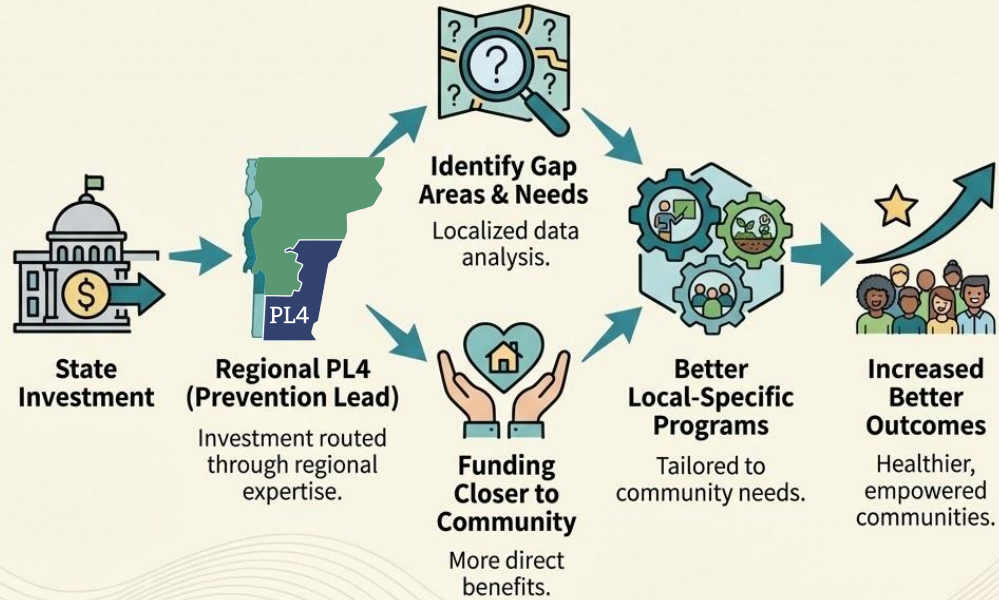
- Skills
- Attitudes
- Behavior
- Circumstances

ClearImpact Dashboard

Goal: Foster Belonging & Well-Being

		Most Recent Period	Current Actual Value
-	S Strategy 1: Increase access to community-building events		
+	PM How Much # of community-building events held	Qtr2 2026	35
+	PM How Much # of community members reached	Qtr2 2026	1,262
+	PM How Much # of small group discussions or matched resident pairs/groups	Qtr2 2026	77
+	PM How Much # of community members actively contributing to the program (e.g., co-facilitating events)	Qtr2 2026	100
+	PM How Much # of people participating in the program	Qtr2 2026	720
-	R Community Outcomes 		
+	PM Better Off Average change in self-reported belonging	-	-
+	PM Better Off Average change in self-reported data on pre/post survey on feelings of belonging	-	-
+	PM Better Off Average change in self-reported number of meaningful social interactions or new connections	-	-
+	PM Better Off # of participants reporting new friendships or support systems formed through program	-	-

From Investment to Impact: The Regional PL4 Model





Team

Maryann Morris
Londonderry

Thomas West
Manchester

Samantha Pearce
Danby

James Coleman
White River Junction

