



VERMONT
FARM TO SCHOOL &
EARLY CHILDHOOD
NETWORK

Farm to School & Early Childhood Awareness Day

February 12, 2025

VT Farm to School and Early Childhood Network Goal:

By 2030, every educational community in Vermont connects classrooms, cafeterias, and communities with equitable access to integrated food system education, community-based learning, and 30% local food purchasing that promotes climate resilience and social justice.



VERMONT
FARM TO SCHOOL
NETWORK

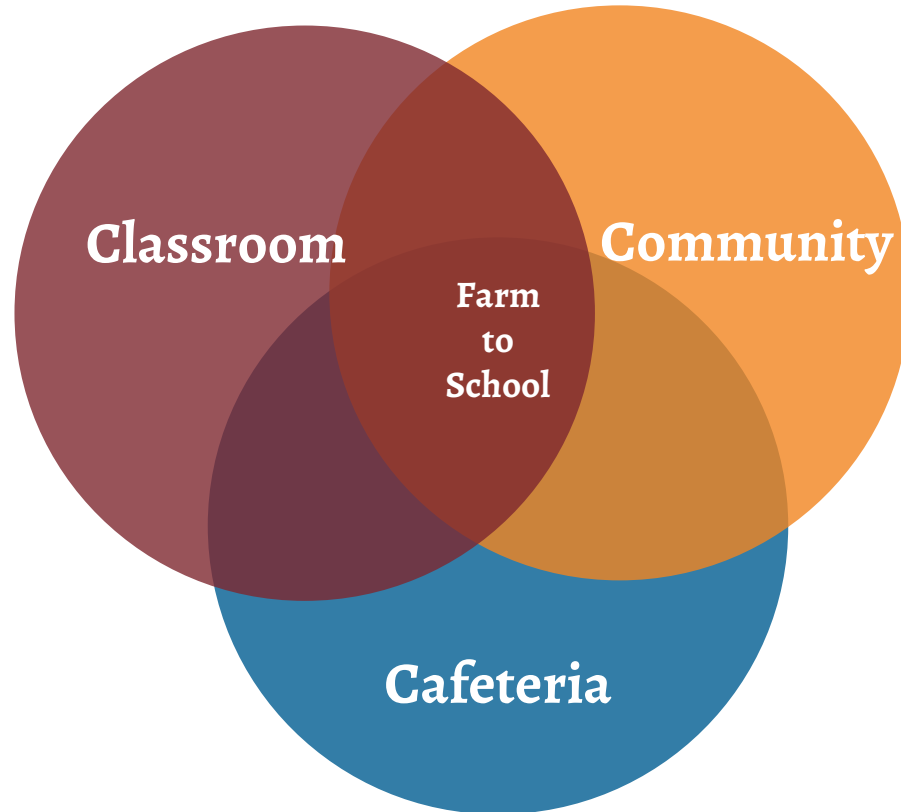


Photo: Ben Hudson



3Cs Model of Change

The Foundation of Farm to School





Classroom



Cafeteria



Community



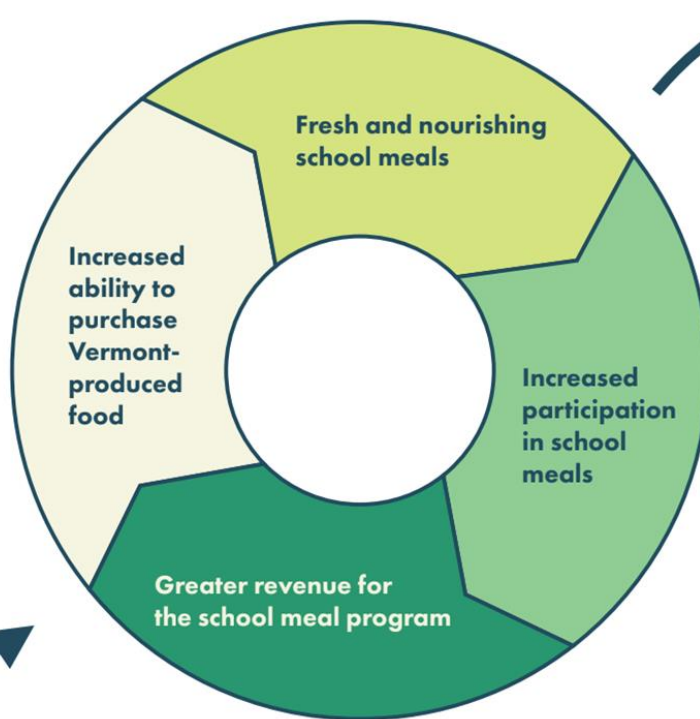
This Farm Feeds Vermont Kids

The Vermont Farm to School & Early Childhood Network
#ThisFarmFeedsVTKids

Our Ask: Please support level funding for two critical programs: the Farm to School & Early Childhood (FTSEC) program and the Local Foods Incentive (LFI), both at \$500,000 for Fiscal Year 2026.

The Virtuous Cycle

Universal school meals for all students, a fully funded **Farm to School & Early Childhood Grants** program, and a fully funded **Local Foods Incentive** work collectively to support a thriving school meal program.



The outcomes:

- Improved student learning and health
- Strong local farms
- Stigma and lunch shaming eliminated