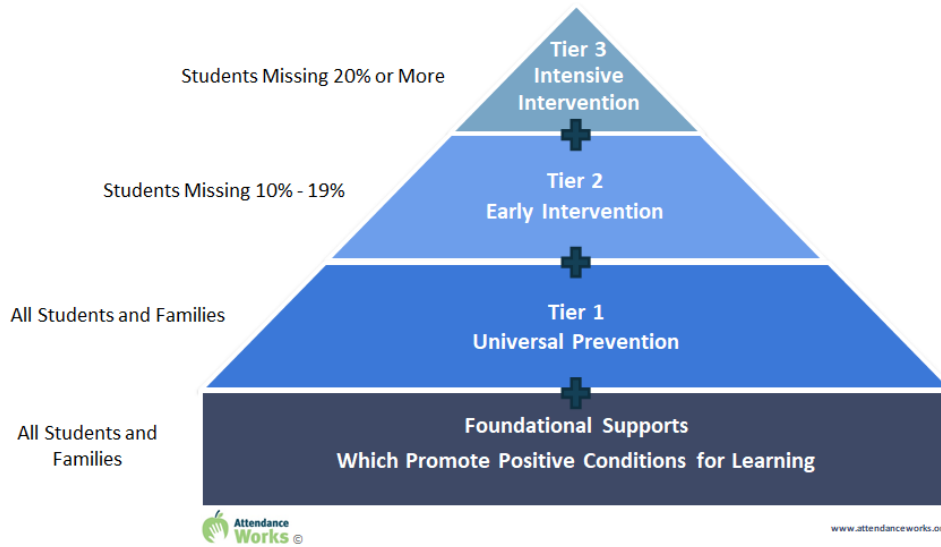


Lamoille Valley School Engagement Program: Tiered Approach to Chronic Absenteeism



Tiered Approach	Intervention
<p><b>Foundation Supports: School &amp; Community</b></p> <ul style="list-style-type: none"> <li>• Staff training/academic challenge &amp; engagement</li> <li>• Positive school culture</li> <li>• Restorative Practices in schools</li> <li>• Family engagement/events</li> <li>• Clear expectations for engagement</li> <li>• Connection</li> </ul> <p><b>Tier 1: School Personnel, Guidance, Clinician</b></p> <ul style="list-style-type: none"> <li>• Clear protocol for attendance tracking</li> <li>• Availability &amp; connection to adults at school</li> <li>• Student success plans</li> <li>• Positive communication to families</li> <li>• Encouraging engagement letters</li> </ul> <p><b>Tier 2: LVSEP &amp; School personnel</b></p> <ul style="list-style-type: none"> <li>• Early intervention</li> <li>• ID barriers to attendance</li> <li>• School attendance teams/contracts/plans</li> <li>• Intensive tutoring/mentoring</li> <li>• Small group interventions</li> <li>• Restorative alternatives to discipline and suspension</li> </ul> <p><b>Tier 3: LVSEP, DCF, BARJ, Family Court</b></p> <ul style="list-style-type: none"> <li>• Intensive supports</li> <li>• Educational support champions/advocates</li> <li>• Truancy Petitions/proceedings</li> <li>• Interagency case management</li> </ul>	<p><b>School &amp; Community Supports:</b></p> <ul style="list-style-type: none"> <li>• School culture &amp; community development</li> <li>• Clear messaging that education is a right.</li> <li>• Clear expectations for attendance and tracking.</li> </ul> <p><b>Students/families develop:</b></p> <ul style="list-style-type: none"> <li>• Connection to school community</li> <li>• Sense of place &amp; belonging</li> <li>• Individual purpose/ Sense of identity</li> <li>• Feeling of engagement</li> </ul> <p><b>LVSEP offers:</b></p> <p><b>Tier 2:</b></p> <ul style="list-style-type: none"> <li>• Bridge Communication between families and schools</li> <li>• Guide families through engagement strategies/ school team meetings</li> <li>• Apply expertise: TIP, RP, referral to resources</li> <li>• Offer small group interventions/ peer groups</li> <li>• Community and relationship building circles</li> <li>• Service-learning opportunities</li> <li>• Address family’s barriers and needs</li> <li>• Referral to youth programs/supports</li> <li>• 1 on 1 support/home visits</li> <li>• Address housing and transportation barriers</li> </ul> <p><b>Tier 3:</b></p> <ul style="list-style-type: none"> <li>• Truancy petitions and proceedings</li> <li>• Intensive interventions</li> <li>• Collaboration with DCF/IFBS/BARJ/Legal partners/school partners</li> </ul>