

ADULT EDUCATION & LITERACY NETWORK

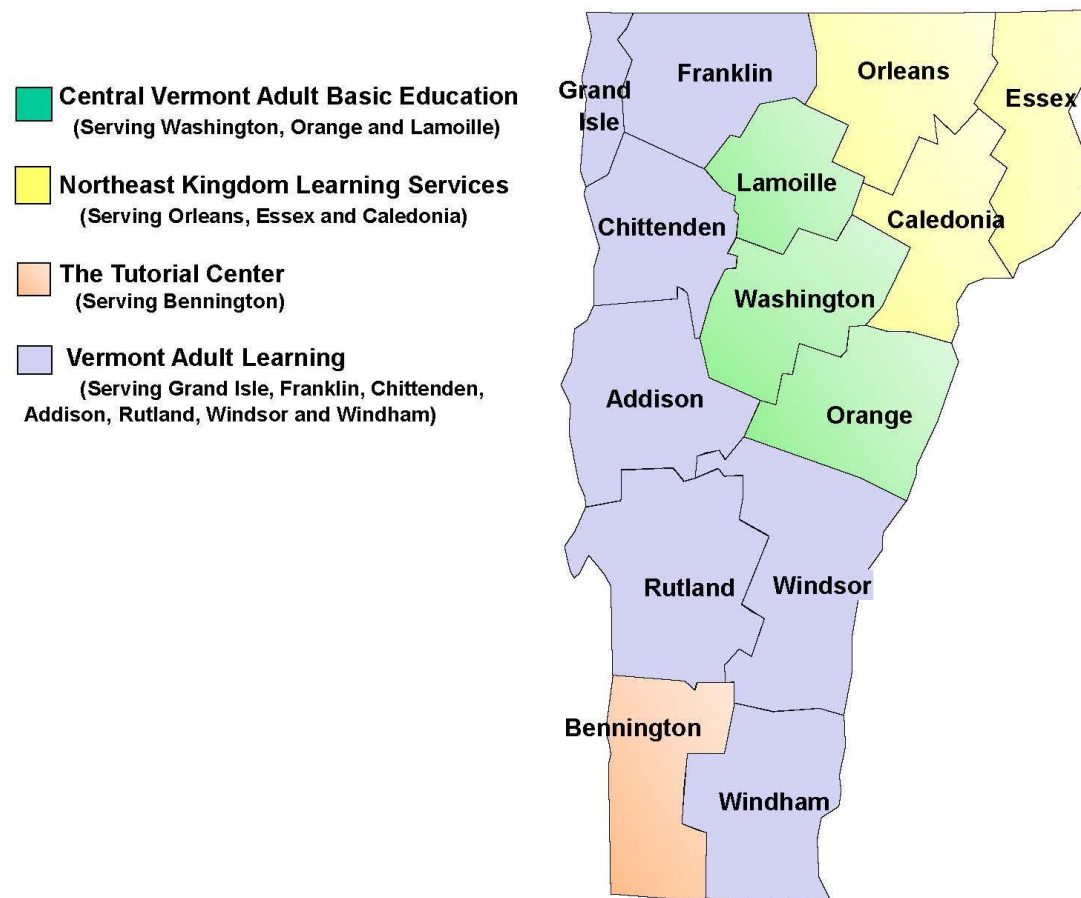
April 2025



Our work changes lives.

Adult Education and Literacy services help people build the assets they need to move out of poverty, as well as the confidence to continue to move toward success throughout their lives.

Vermont's Four Adult Education and Literacy Providers Help Achieve State Goals





We help students to identify concrete goals and then break those goals down into steps.

Our students set goals in the domains of:

- Family and life
- Academics
- Career and college readiness

Our services include:

- Literacy Education: Reading, Writing, Math including computer and financial literacy education
- English Language Learning and US Citizenship preparation
- High School Diploma and GED Credentialing
- Career and College Readiness





**ADULT EDUCATION AND LITERACY PROVIDERS
OFFER A BROAD RANGE OF SERVICES THAT ARE
TARGETED, TAILORED AND RELEVANT TO EACH
STUDENT'S GOALS AND NEEDS.**



Adult Education & Literacy providers help facilitate regional workforce expansion and paid work-based learning and training with a population that is already here. We help our students gain the life skills and credentials they need to pursue their passions and fill critical occupations in Vermont.

AELN'S ROLE IN CTE

AELN is a key part of Vermont's statewide workforce development system as the "on-ramp" to CTE piece of the pipeline.

The AELN serves a different population than CTE Centers - our students are often not yet eligible or ready for CTE. Our students may come to us directly after dropping out of high school, or much later on in life, and they often lack the basic skills to participate successfully in tech ed programs, free college programs or workforce training.

Our ELL students must first learn English before moving through the workforce development pipeline.

We are the very first stop for Vermont's most vulnerable populations.

Investing in AEL services upstream supports and increases the success of money invested further downstream in workforce development initiatives such as CTE.

FY23 & FY24 Student Numbers

	High School Completion Program	English Language Learning	Adult Basic Education	Total
Fiscal Year 2023	407	547	941	1,895
Fiscal Year 2024	427	768	975	2,170

Common outcomes for our students include:

- Attaining specific skills to get a job or a better job
- Earning a high school diploma or GED
- Achieving a certification or other credential for a job
- Deciding to attend college or other educational & career development opportunities
- Improving their English language abilities to apply their skills and education to careers here in Vermont

Each year as a Network of four AEL providers, we employ approximately **132 educators** and support staff to provide educational and career readiness services to about **2,000 students** from every city and town in the State.

Over the last 5 years, the average cost per student served by the AEL providers was \$3,124.

High School Completion - Now Adult Diploma Program

AEL providers have administered the High School Completion Program (HSCP) for the State since its inception. Last year, AEL providers worked with the Agency of Education and the General Assembly to sunset the High School Completion Program and transition high school completion services to a new, revamped Adult Diploma Program.

This transition is in progress and has resulted in some **unintended consequences** that we are trying to address this year.

Over the last four fiscal years, **417** Vermonters have earned a diploma and another **202** have earned GEDs through the AELN.

Details of HSCP to ADP Transition

- **Moves all services under one umbrella:** Retires the High School Completion Program (HSCP) described in 16 V.S.A. §943 and revitalizes the Adult Diploma Program (ADP) described in 16 V.S.A. §945 to become the Adult Education and Secondary Credential Program.
- **Consistency in age eligibility:** Makes modifications to the Adult Diploma Program (ADP) described in 16 V.S.A. §945 to make the eligible age of a student consistent across all sections of the legislation, to be 16 years or older.
- **Honor our statutory appropriation:** Our governing statute currently says that AEL providers shall be paid “an amount equal to 26 percent of the base education amount for each student who completed the diagnostic portion of the program”, based on an average of the previous two years.” FY25 is the first fiscal year where this statutory language was followed for calculating **total appropriations** for adult education services.
- **Eliminates the TABE testing as a funding mechanism**

FY26 BUDGET

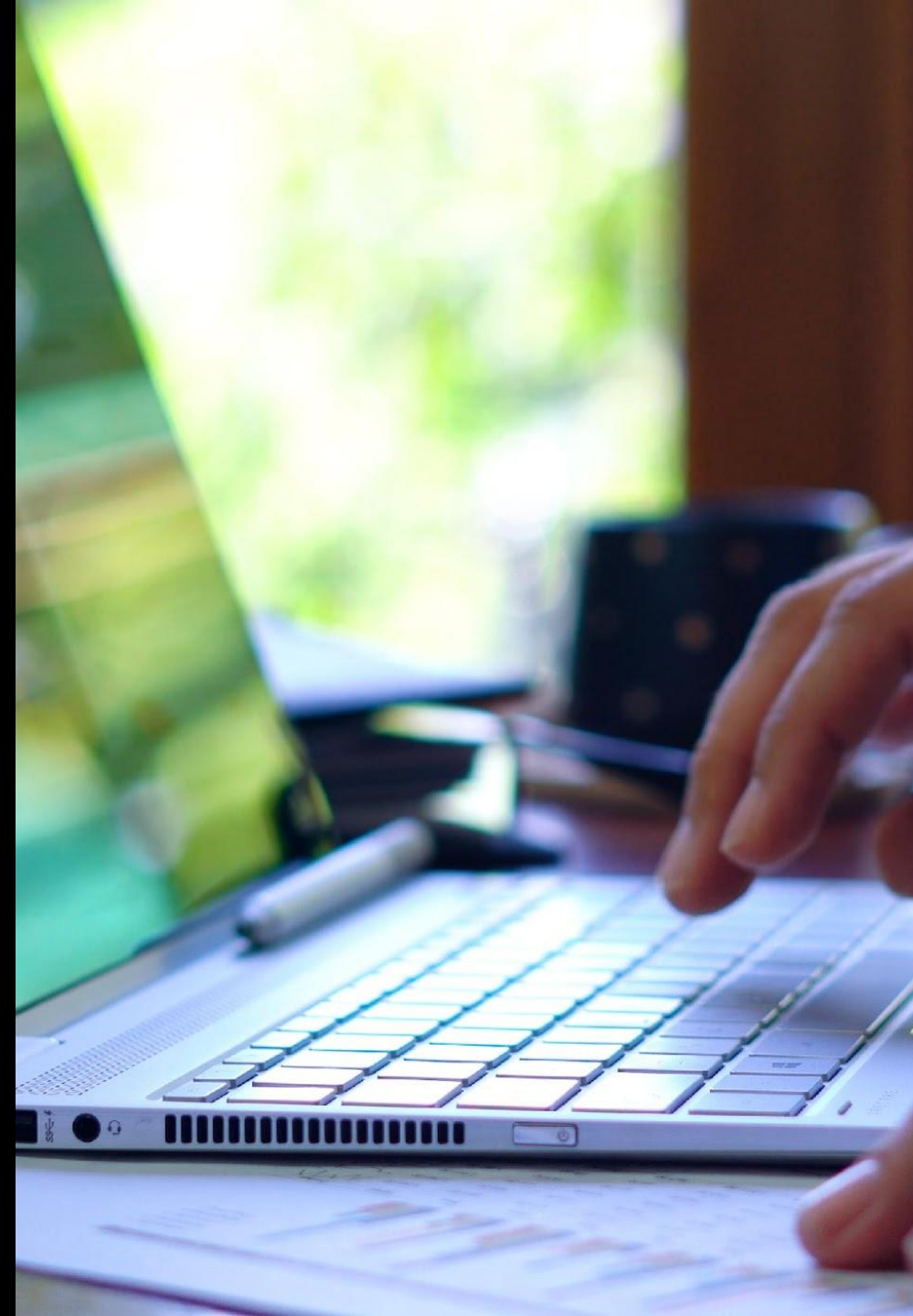
The AELN thanks the General Assembly for enacting policy last year that helped to stabilize our funding. At the same time, we have encountered unintended consequences from different interpretations of the language we secured last year which put our most rural AEL providers at risk.

The AELN respectfully requests the Senate to please support:

1. The corrected AEL \$ amounts in the House budget
2. The language added to Sec. E.504 of the FY26 Budget to address the unintended consequences of policy changes made last session

This language preserves the current method of making specific allocations each AEL provider. While the funding mechanism in statute explains the calculation for total statewide AEL appropriations, *specific allocations to each provider* has always gone through a weighted funding formula under the State Board of Education.

This language also honors the recommendation from the High School Completion Student Access report to modernize the State Board AEL funding formula in consultation with local AEL providers.





Thank you!

Catherine Kalkstein, Executive Director
Central Vermont Adult Education
ckalkstein@cvae.net

Michelle Faust, Executive Director
Northeast Kingdom Learning Services, Inc.
michelle.faust@neklsvt.org