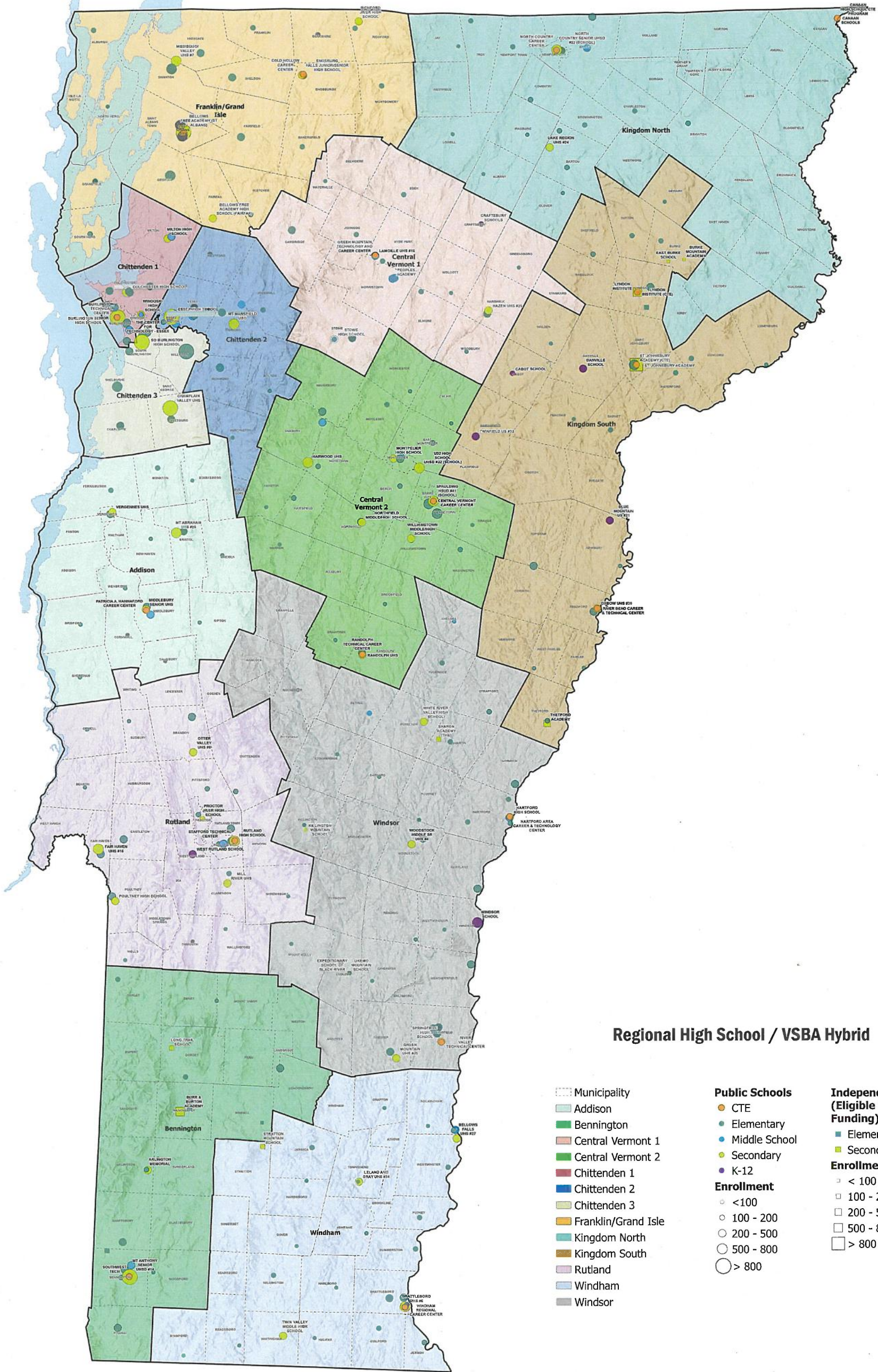
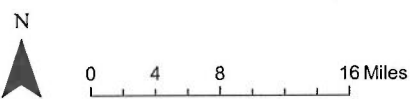


SAMPLE: Hybrid - VSBA Regional

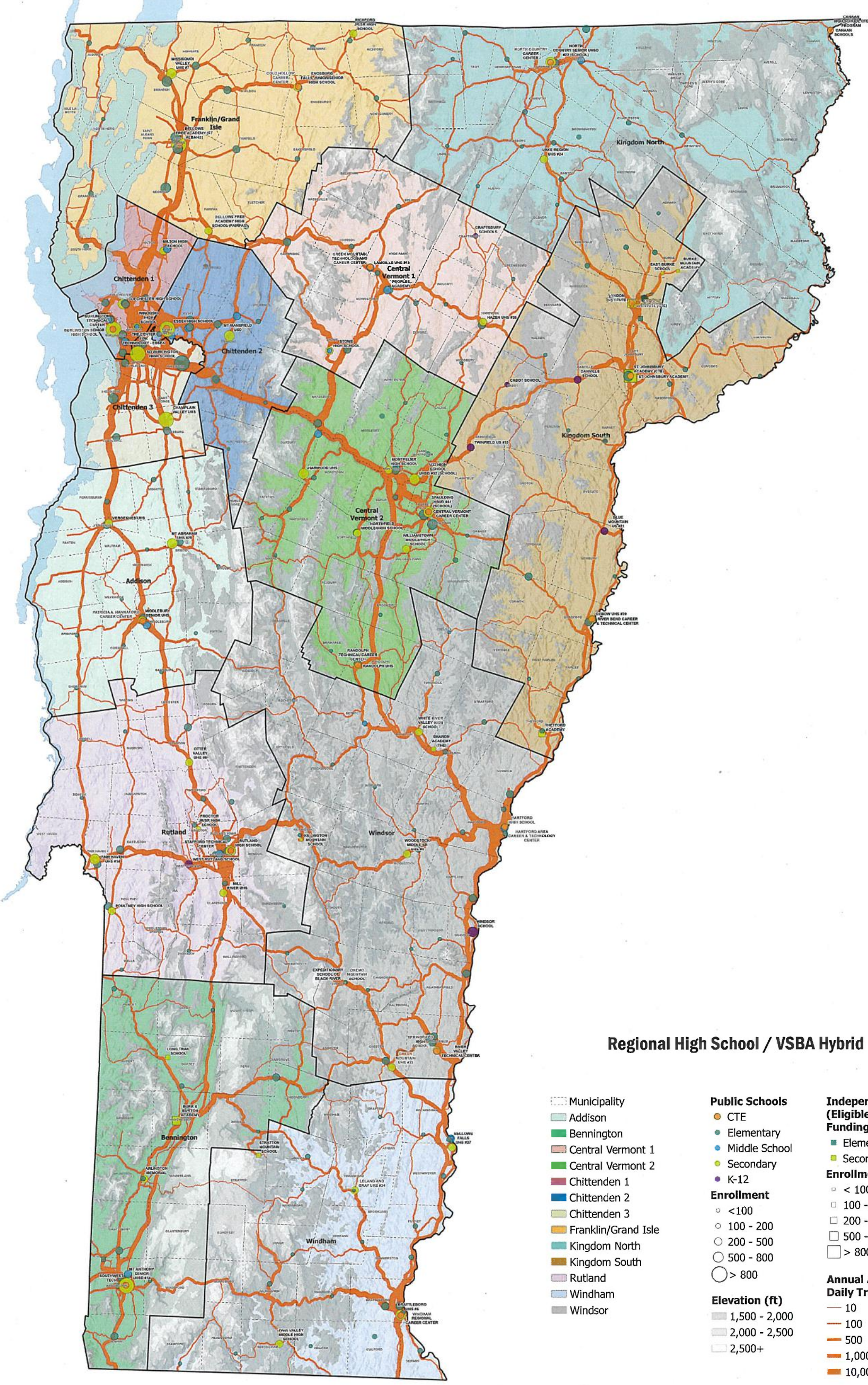


Regional High School / VSBA Hybrid

- Municipality
- Addison
- Bennington
- Central Vermont 1
- Central Vermont 2
- Chittenden 1
- Chittenden 2
- Chittenden 3
- Franklin/Grand Isle
- Kingdom North
- Kingdom South
- Rutland
- Windsor
- Public Schools - CTE
- Public Schools - Elementary
- Public Schools - Middle School
- Public Schools - Secondary
- Public Schools - K-12
- Enrollment - <100
- Enrollment - 100 - 200
- Enrollment - 200 - 500
- Enrollment - 500 - 800
- Enrollment - > 800
- Independent Schools (Eligible for Public Funding) - Elementary
- Independent Schools (Eligible for Public Funding) - Secondary
- Enrollment - < 100
- Enrollment - 100 - 200
- Enrollment - 200 - 500
- Enrollment - 500 - 800
- Enrollment - > 800

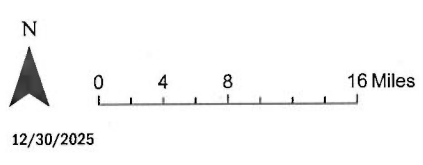


SAMPLE: Hybrid - VSBA Regional + Elevation + Traffic Time



Regional High School / VSBA Hybrid

- Municipality
 - Addison
 - Bennington
 - Central Vermont 1
 - Central Vermont 2
 - Chittenden 1
 - Chittenden 2
 - Chittenden 3
 - Franklin/Grand Isle
 - Kingdom North
 - Kingdom South
 - Rutland
 - Windsor
 - Windsor
- Public Schools
 - CTE
 - Elementary
 - Middle School
 - Secondary
 - K-12
 - Enrollment**
 - < 100
 - 100 - 200
 - 200 - 500
 - 500 - 800
 - > 800
 - Elevation (ft)**
 - 1,500 - 2,000
 - 2,000 - 2,500
 - 2,500+
- Independent Schools (Eligible for Public Funding)**
 - Elementary
 - Secondary
 - Enrollment**
 - < 100
 - 100 - 200
 - 200 - 500
 - 500 - 800
 - > 800
 - Annual Average Daily Traffic**
 - 10
 - 100
 - 500
 - 1,000
 - 10,000



12/30/2025

