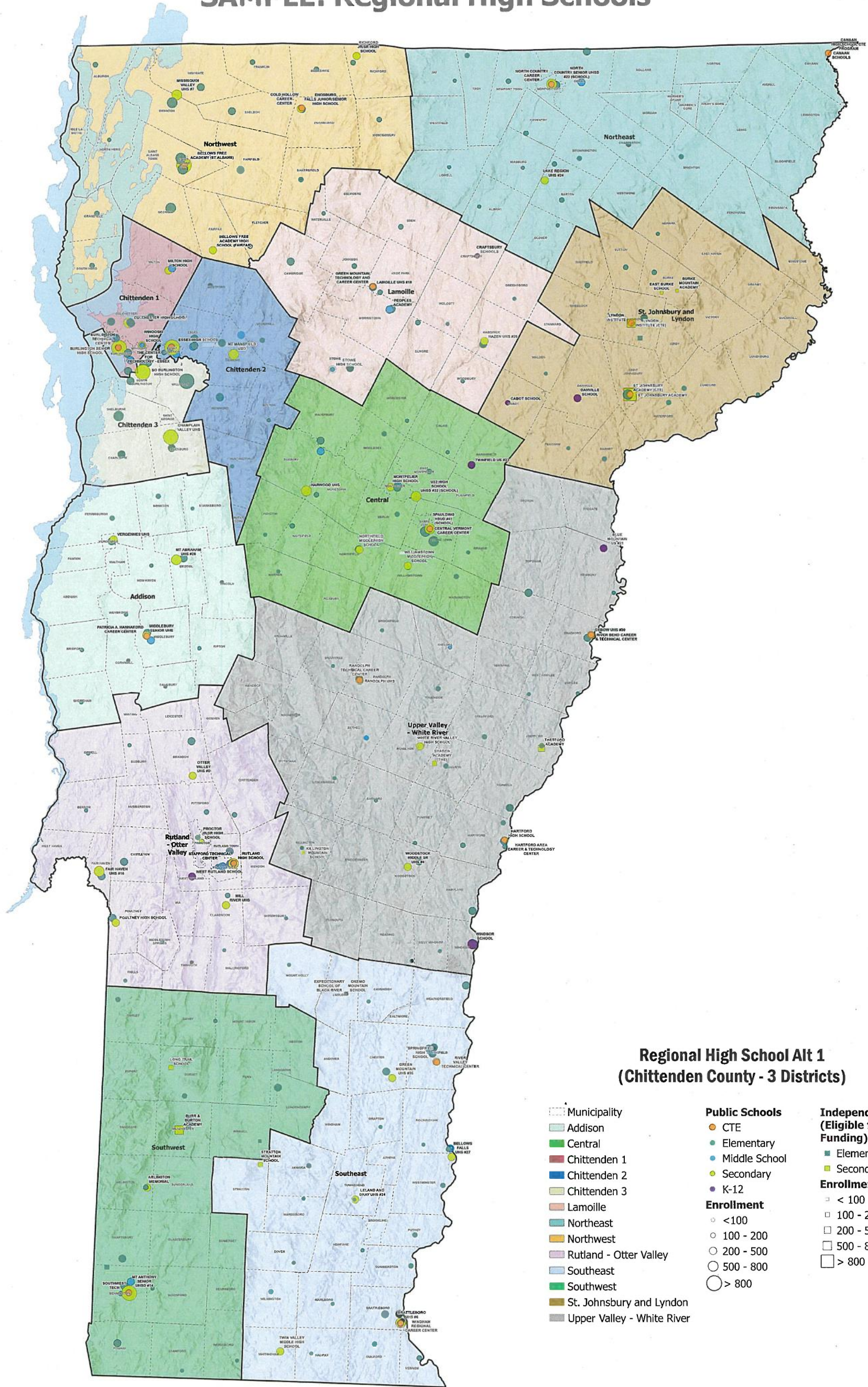
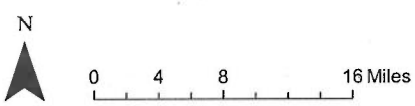


SAMPLE: Regional High Schools

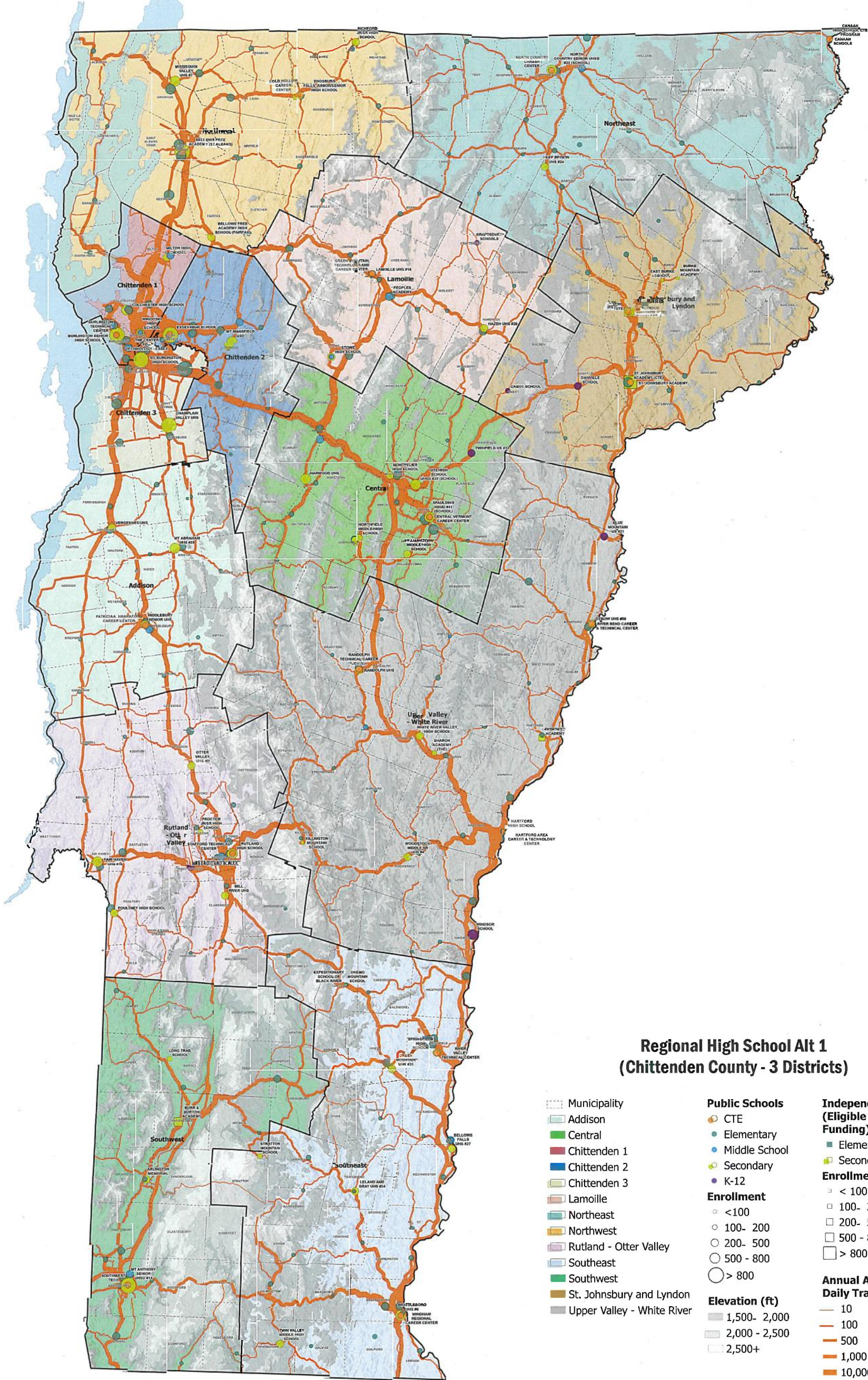


Regional High School Alt 1 (Chittenden County - 3 Districts)

- | | | |
|---|---|---|
| <ul style="list-style-type: none"> □ Municipality ■ Addison ■ Central ■ Chittenden 1 ■ Chittenden 2 ■ Chittenden 3 ■ Lamolle ■ Northeast ■ Northwest ■ Rutland - Otter Valley ■ Southeast ■ Southwest ■ St. Johnsbury and Lyndon ■ Upper Valley - White River | <ul style="list-style-type: none"> ● Public Schools ○ CTE ○ Elementary ○ Middle School ○ Secondary ○ K-12 ○ Enrollment ○ <100 ○ 100 - 200 ○ 200 - 500 ○ 500 - 800 ○ > 800 | <ul style="list-style-type: none"> ■ Independent Schools (Eligible for Public Funding) ■ Elementary ■ Secondary ■ Enrollment □ < 100 □ 100 - 200 □ 200 - 500 □ 500 - 800 □ > 800 |
|---|---|---|



SAMPLE: Regional High Schools + Elevation + Traffic Time



**Regional High School Alt 1
(Chittenden County - 3 Districts)**

- Municipality
 - Addison
 - Central
 - Chittenden 1
 - Chittenden 2
 - Chittenden 3
 - Lamoille
 - Northeast
 - Northwest
 - Rutland - Otter Valley
 - Southeast
 - Southwest
 - St. Johnsbury and Lyndon
 - Upper Valley - White River
- Public Schools**
 - CTE
 - Elementary
 - Middle School
 - Secondary
 - K-12
 - Enrollment**
 - <100
 - 100- 200
 - 200- 500
 - 500 - 800
 - > 800
 - Elevation (ft)**
 - 1,500- 2,000
 - 2,000 - 2,500
 - 2,500+
- Independent Schools (Eligible for Public Funding)**
 - Elementary
 - Secondary
 - Enrollment**
 - < 100
 - 100- 200
 - 200- 500
 - 500 - 800
 - > 800
 - Annual Average Daily Traffic**
 - 10
 - 100
 - 500
 - 1,000
 - 10,000

