



Senate Committee on Economic Development, Housing, and General Affairs

March 21, 2025

Nic Longo | Director of Aviation

**Jeff Bartley | Director of Innovation &
Marketing**



**You can build a mile of road
and travel a mile, or you can
build a mile of runway and
travel the world.**

Who is Leahy BTV?

Small-Hub Airport

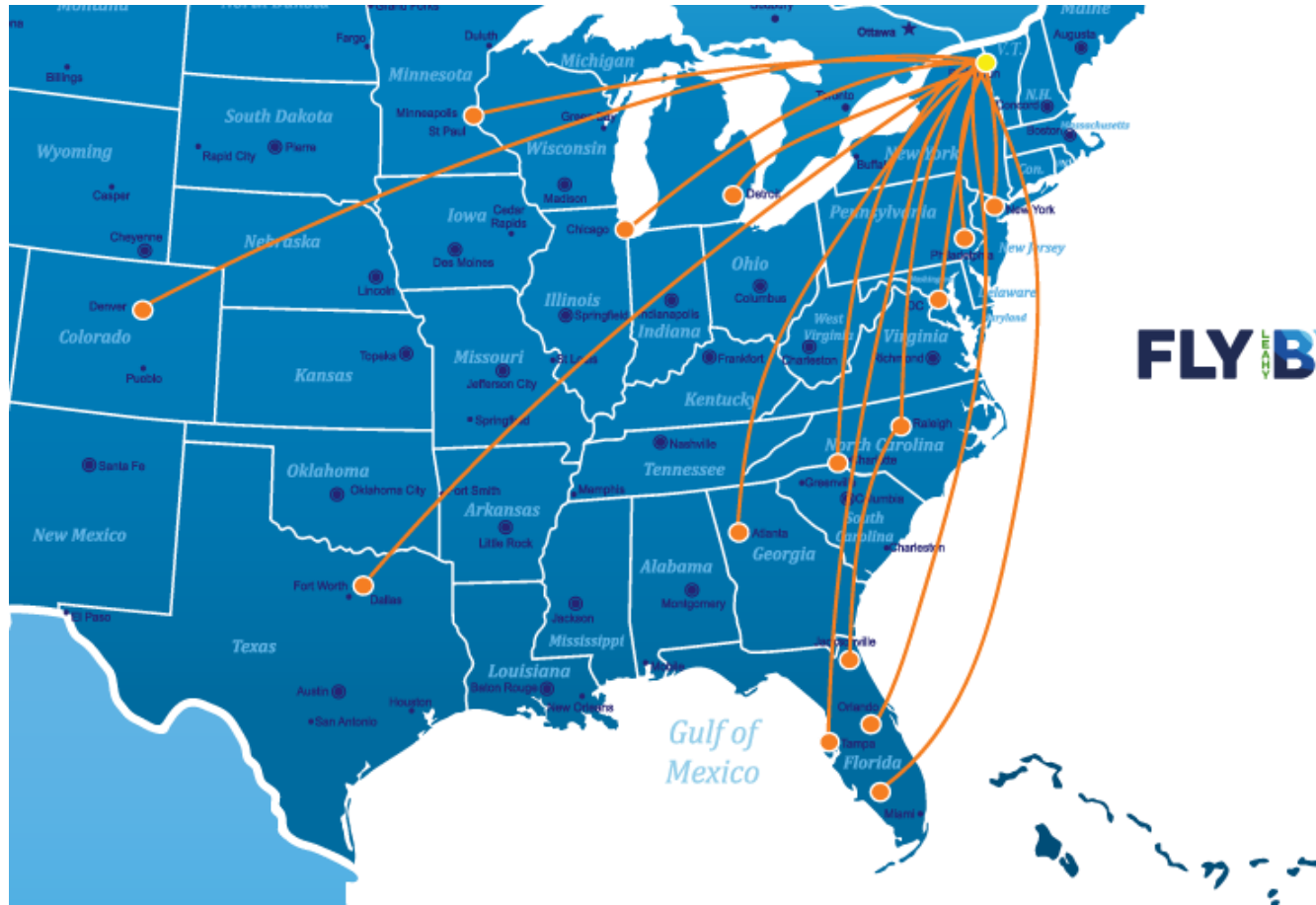
- We see 1.4 million passengers per year
- 2nd busiest airport in New England when looking at total operations
- One of the largest points of entry into Vermont
- Source of innovation (Beta) and curiosity (VFA)
- Vermont National Guard



Our Airline Partners



The most destinations dating back to 1990!



- Atlanta (ATL) via [Delta](#)
- Charlotte (CLT) via [American Airlines](#)
- Chicago (ORD) via [United](#)
- Dallas (DFW)* via [American Airlines](#)
- Detroit (DTW)* via [Delta](#)
- Denver (DEN)* via [United](#)
- Fort Myers (RSW) via [Breeze](#)
- Jacksonville (JAX)* via [Breeze](#)
- Minneapolis - St. Paul (MSP)* via [Sun Country Airlines](#) or [Delta](#)
- Newark (EWR) via [United](#)
- New York (JFK) via [Delta](#)
- New York (LGA) via [Delta](#) or [American Airlines](#)
- Orlando (MCO) via [Breeze](#) or [Frontier](#)
- Philadelphia (PHL) via [American Airlines](#)
- Raleigh-Durham (RDU) via [Breeze](#)
- Tampa (TPA) via [Breeze](#) or [Frontier](#)
- Washington DC (IAD) via [United](#)
- Washington DC (DCA) via [American Airlines](#)

*Seasonal

We are more than commercial services

Our current airfield tenants include:

- Aerodyme
- Beta Technologies
- Burlington Technical College
 - FedEx
 - Heritage Aviation
 - NOAA
- Pratt & Whitney Canada
- University of Vermont Medical Center
 - Vermont Air National Guard
 - Vermont Army National Guard
 - Vermont Flight Academy



Economic Impact*



Valuation

- The overall value of the Airport to the region is **\$1.04 billion**
- The annual economic activity generated by the airport is **\$481 million**
- The current asset value of the airport is **\$562 million**

Jobs

- The airport supports **4,935 jobs** – only 50-60 are direct employees of Leahy BTV.
- The airport provides Vermonters with **\$170.3 million** in salaries annually

Taxes

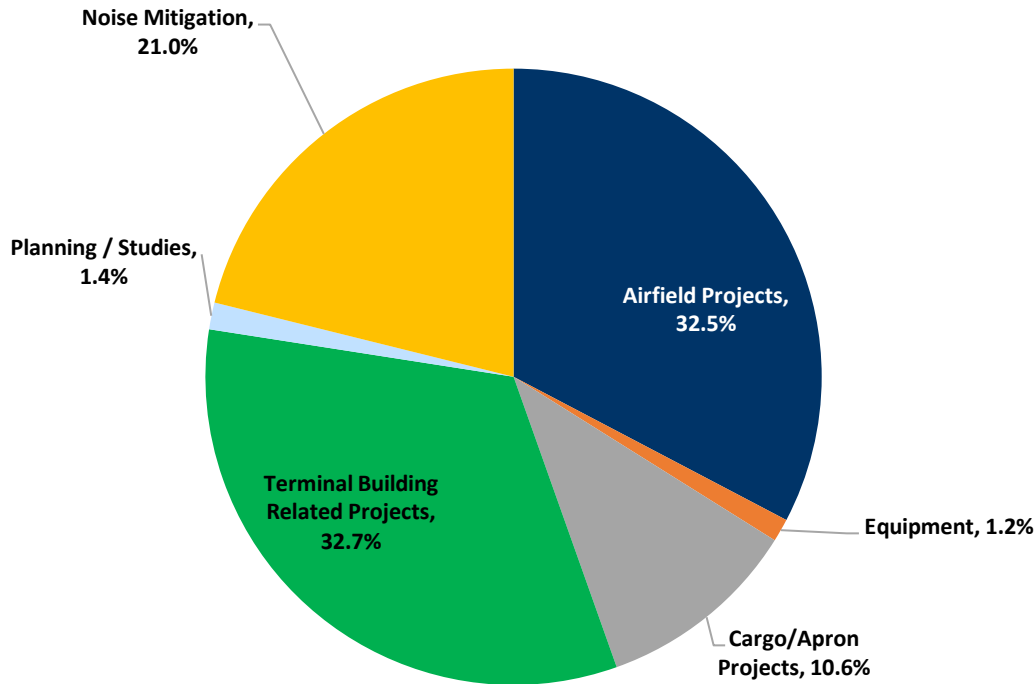
- The airport generates approximately **\$29 million** in state taxes and **\$6 million** in local taxes annually
- Estimated **\$2 million** in airport fuel revenue generated at Leahy that must be re-invested in an aviation program. Leahy BTV receives **\$500,000**

**2017 economic impact study.*

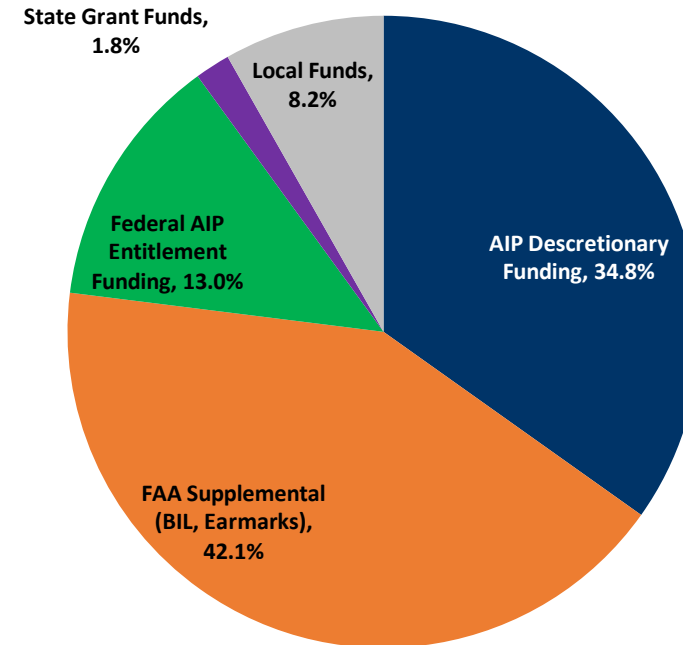
Leahy BTV Capital Development Program Overview

- The Airport Capital Development Program for FY 2024 – 2028 has an estimated cost of \$137 million of which \$125 is expected to be funded by federal or state grants—Program funding sources do not include any additional bonds

Capital Development Program Expenditures, FY2024-2028



Capital Development Program Funding Sources, FY2024-2028



Capital Development Program Projects and Funding Sources

FY 2024-2028

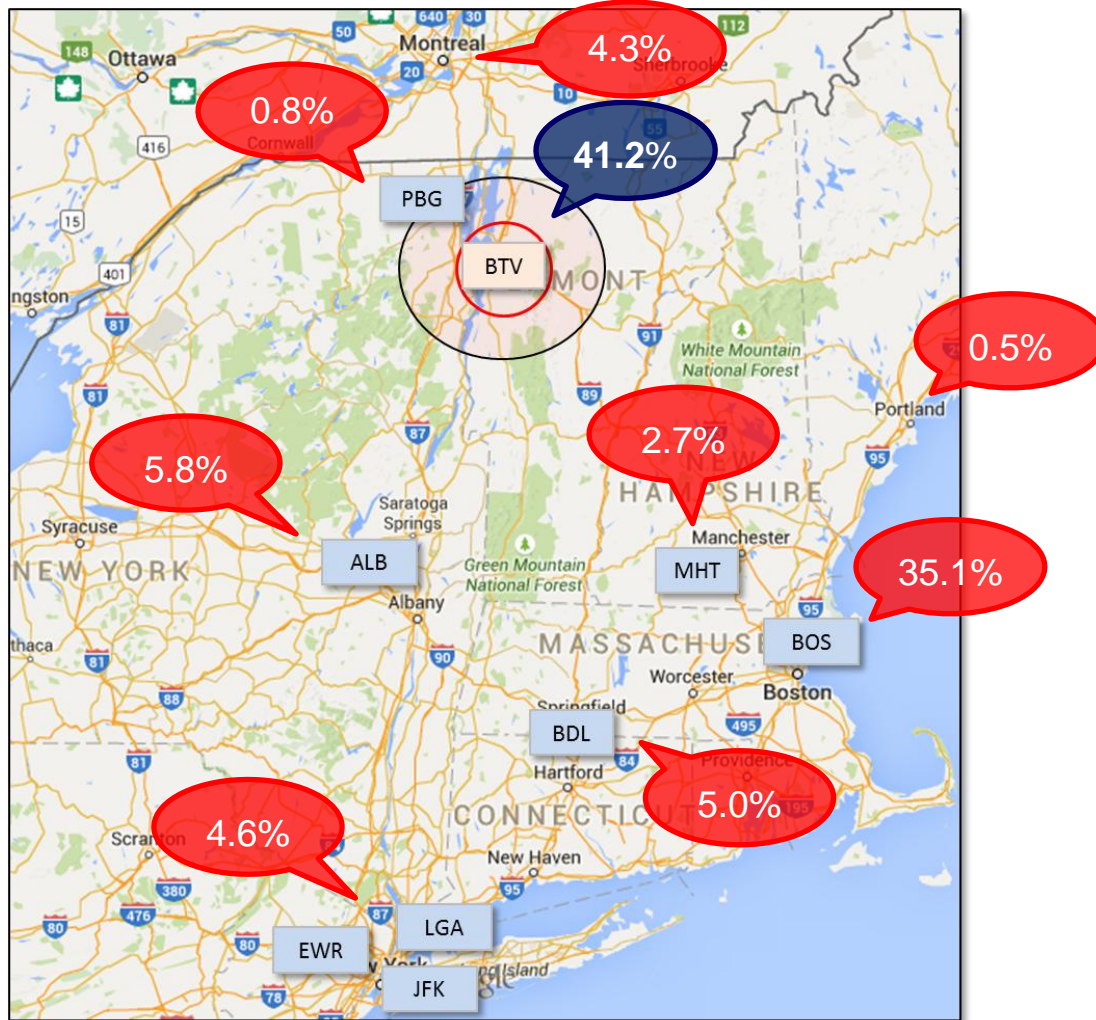
(000's)	TOTAL
Projects:	
Airfield Projects	\$44,483
Cargo Apron Development	14,524
Terminal Building Related Projects	44,759
Planning/Studies	1,880
Noise Mitigation	29,720
Total Project Cost	\$137,026
Funding Sources:	
Federal AIP Entitlement Funding	\$17,600
AIP Discretionary	47,092
FAA Supplemental Funding	56,974
State Grant Funds (500K annually)	2,500 ←-1.8%
Local Funds *	11,200
Total Funding Sources	\$137,026

*Local funding projected to be partially paid with PFCs

Passenger Statistics

Burlington Catchment Area Traffic

Year-End Third Quarter 2023



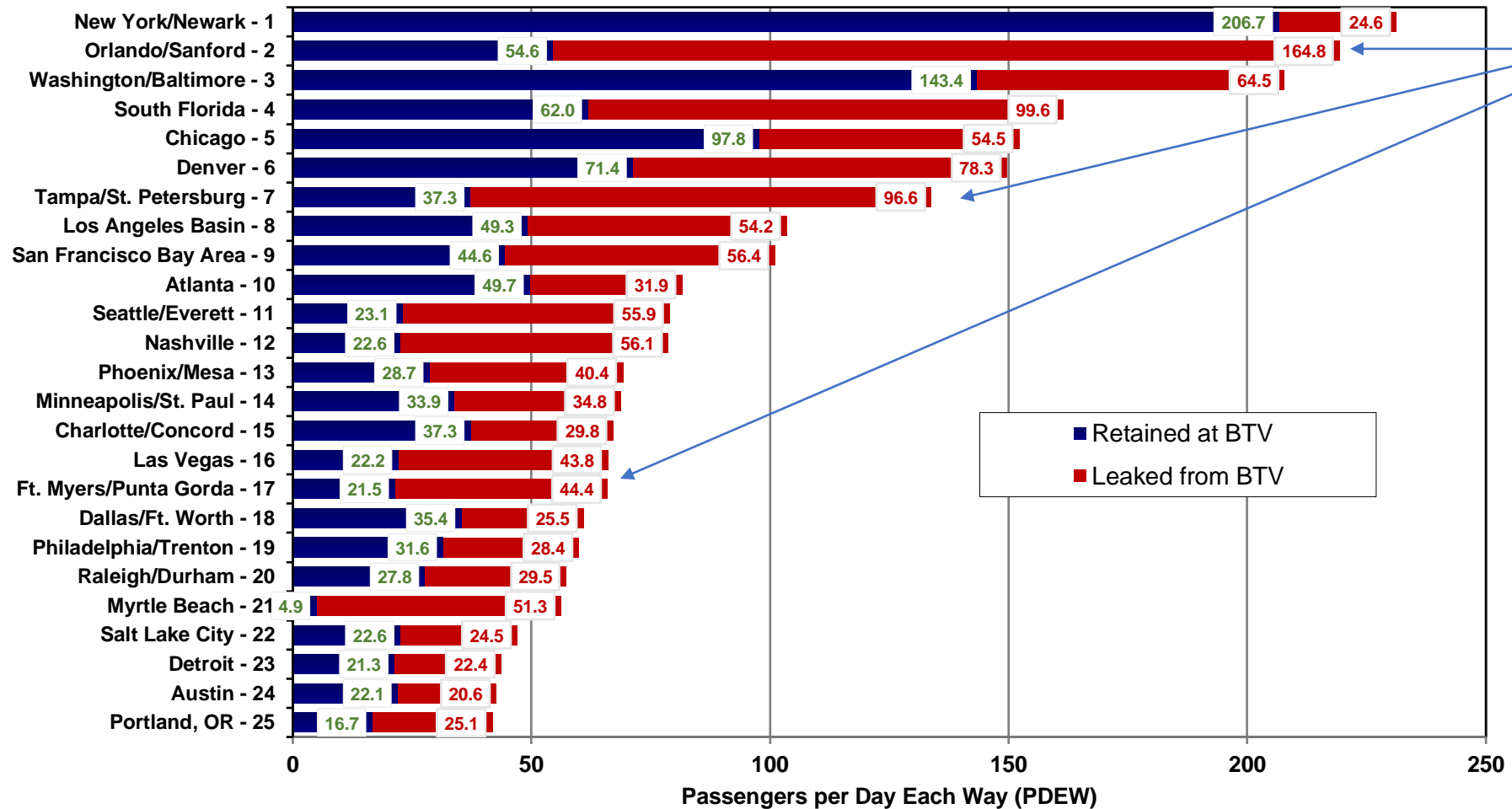
Leakage = opportunity to retake market

Leahy BTV to embark on campaign highlighting more options out of BTV.

Leahy BTV retained just 41.2% of the Traffic Generated in its catchment area in YE 3Q 2023; Boston captured 25.1% of the traffic.

Demand is there.

Passengers per Day Each Way (PDEW) in the 25 Largest True Markets at Burlington
Year-End Third Quarter 2023



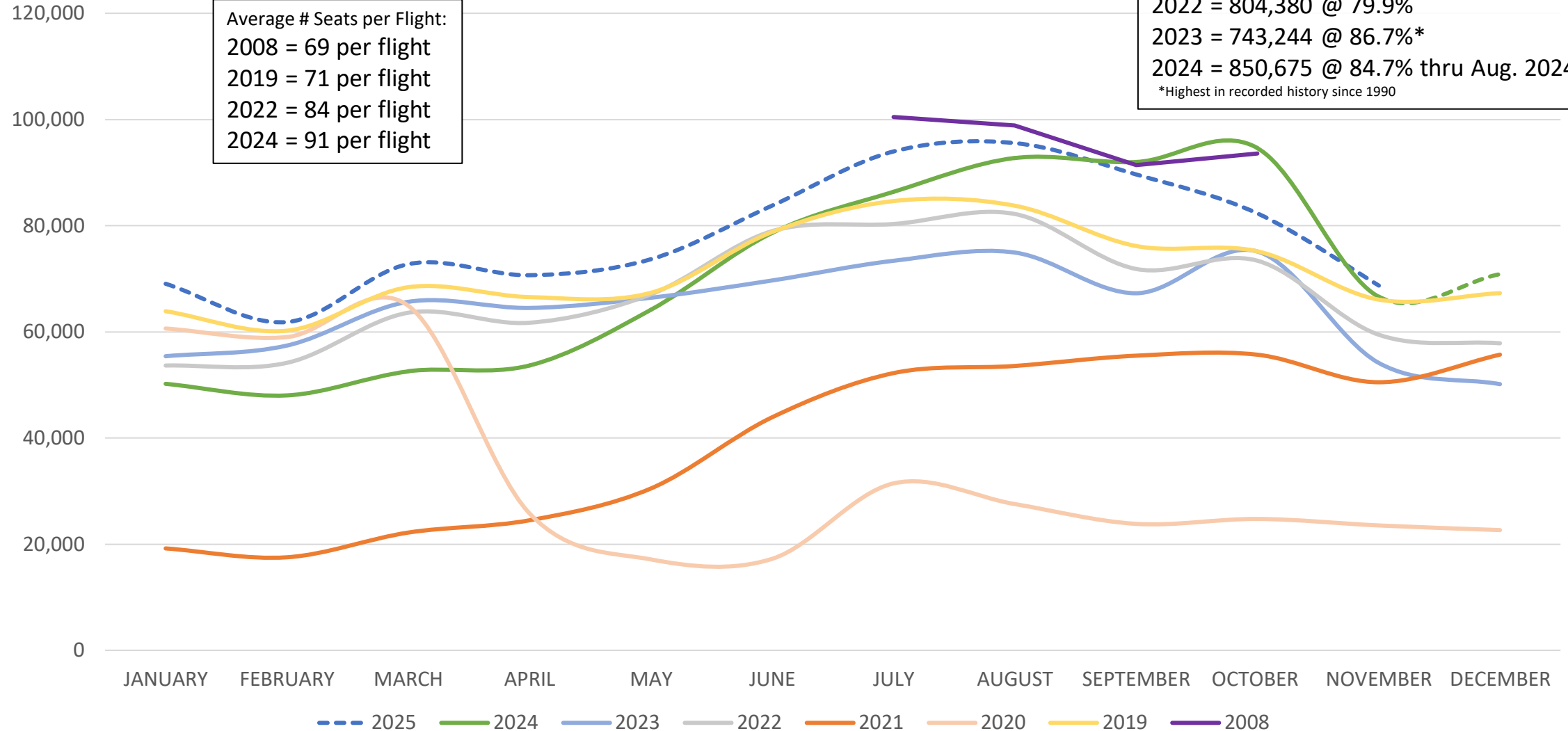
Pre-Breeze
and
Frontier

■ Retained at BTV
■ Leaked from BTV

Scheduled Seats; Past and Projections

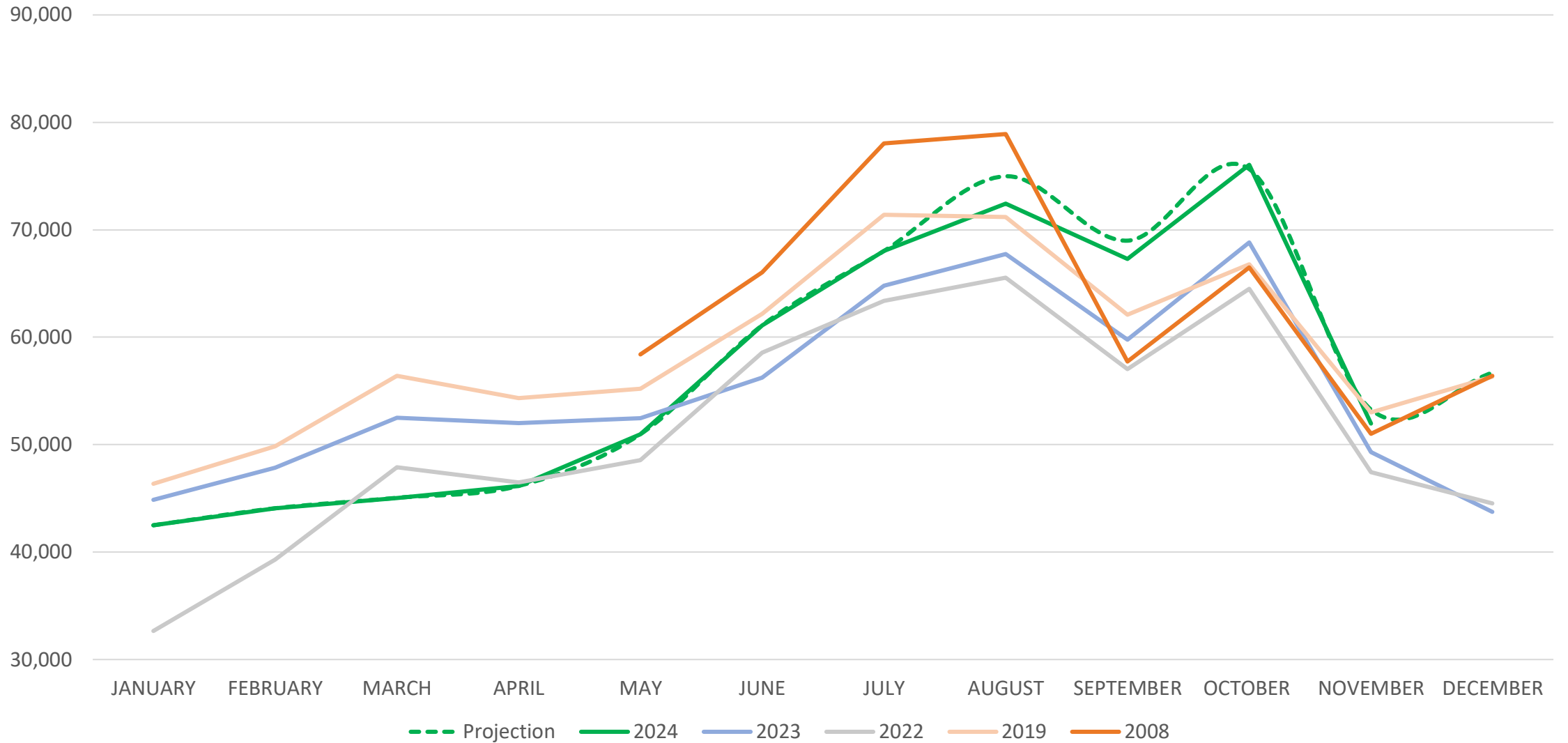
Total Annual Seats and Load Factor:
 2008 = 1,051,115 @ 74.6%
 2019 = 858,589 @ 82.7%
 2022 = 804,380 @ 79.9%
 2023 = 743,244 @ 86.7%*
 2024 = 850,675 @ 84.7% thru Aug. 2024
 *Highest in recorded history since 1990

Average # Seats per Flight:
 2008 = 69 per flight
 2019 = 71 per flight
 2022 = 84 per flight
 2024 = 91 per flight



2025 projections have us near 2008 results and surpass 2019 results.

Passenger Statistics



Project NexT

Built for regional aircraft

Additions 25 years ago were for regional aircraft

Four gates operating at one time with 150 passengers inbound and outbound at the same time.

Original designed for 50 passengers per flight.

Industry demands more amenities (food, shopping, etc.)



Congressionally Directed Spending Awards

BTV Project NexT \$34 Million

South Terminal Design work \$4.0 Million

New General Aviation Ramp: \$5 Million

New Jet Bridge \$2 Million

\$45 Million



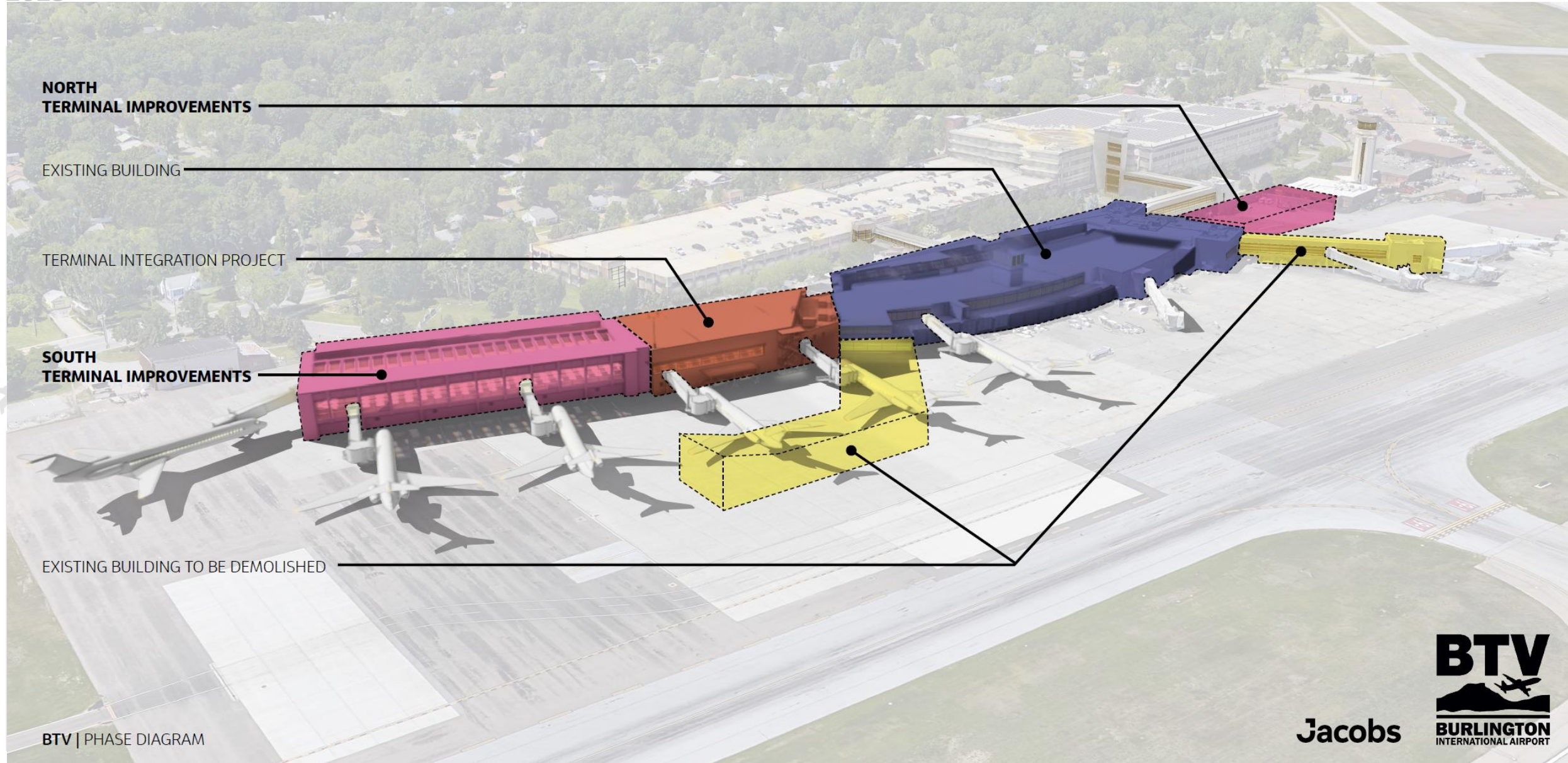
Ribbon Cutting Ceremony

Project NexT's Sustainable Focus

- Implementation of geothermal field for heating and cooling
- Employment of a mass timber framing structure and maple ceilings will reduce carbon footprint of the construction
- A Photovoltaic-ready area is a focal part of the third-floor design along with gardens and a patio viewing area available to the public







BTV | PHASE DIAGRAM

Jacobs





SUSTAINABILITY



**airport
carbon
accreditation level 1**

GLOBAL EFFORT TO MITIGATE AIRPORT CARBON EMISSIONS

Airport Carbon Accreditation

- A significant milestone in the airport's ongoing commitment to sustainability. By joining over 600 ACA-accredited airports worldwide, Leahy BTV has taken an important step toward creating a more environmentally responsible future.
- Leahy BTV is the second airport in New England to earn this accreditation
- As a Top 5 Small Airport in the U.S., Leahy BTV is proud to not only offer efficient and convenient travel experiences but a place where sustainability and environmental stewardship are a top priority.



Leahy BTV's Electric Vehicle Fleet is Growing!

The Airport has 3 Ford Lightning trucks, 1 Mach-E Mustang and an Electric Sweeper



