

THE VELOMONT

RJ THOMPSON
Executive Director
Vermont Huts Association
rj@vermonthuts.org



ABOUT VERMONT HUTS

Our mission is to foster a deeper appreciation for our natural environment and strengthen Vermont's communities by providing enriching and immersive outdoor experiences for all.



WHAT IS THE VELOMONT?

- Multi-use trail system optimized for mountain biking
- Connects existing trail systems and communities
- 485 miles from Canada to Massachusetts
- 30-45 backcountry huts and downtown hostels
- Will be the largest hut-supported trail system in the U.S.



VELOMONT TRAIL



SE GROUP



Statewide Partners

- Catamount Trail Association
- Cross Vermont Trail
- Green Mountain Club
- Trust for Public Land
- VAST-VT Assoc. of Snow Travelers
- VT Youth Conservation Corps
- Vermont Land Trust
- Vermont Adaptive
- Vermont Mountain Bike Association
- VT Department of Forests, Parks, and Recreation
- US Forest Service, Green Mountain National Forest

Local Trail Systems

1. Memphremagog Trails
2. Kingdom Trails
3. Caledonia Trail Collective
4. Lamoille Valley Rail Trail
5. Stowe Trails Partnership
6. Waterbury Area Trail Alliance
7. Bolton Valley
8. Cochran's
9. Richmond Mountain Trails
10. Sleepy Hollow Inn Ski & Bike Center
11. Fellowship of the Wheel
12. Mad River Riders
13. Mad River Path
14. Ridgeline Outdoor Collective
15. Killington Mountain Bike Club
16. Mendon Mountain Club
17. Pine Hill Partnership
18. Slate Valley Trails
19. Merck Forest & Farmland
20. Northshire Area Trail System
21. Southern Vermont Trails Association
22. Mount Snow
23. Hoot Toot and Whistle Bike Club
24. Deerfield Valley Trails
25. Thunder Mountain Bike Park

Linking Vermont's trail systems and downtowns



IMPACT: ECONOMIC + WORKFORCE

- 35,820 annual visits
- \$6.2 million in total sales activity
- \$684,900 in tax revenues
- 300 young adults gain trade skills
- 91 full-time jobs supported



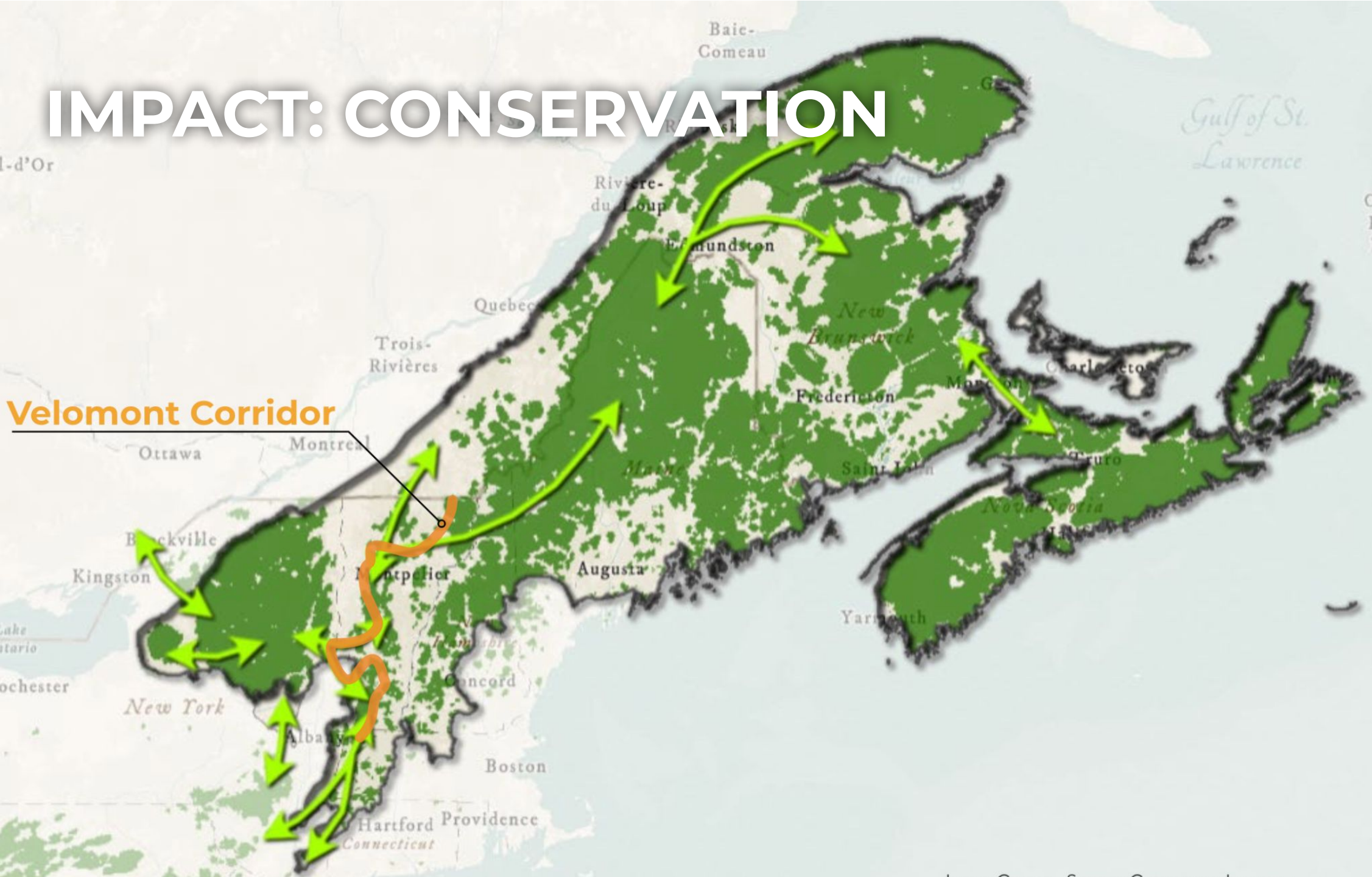
IMPACT: CONSERVATION

- Opportunity to conserve up to 214,000 acres of land
- Expands protection of critical wildlife corridor
- Low impact planning and design
- Protect community connections to open spaces



IMPACT: CONSERVATION

Velomont Corridor



IMPACT: ACCESSIBILITY

- Trails, amenities, and communication materials designed for all abilities
- All newly built trail to be adaptive friendly
- Adaptive optimized segments
- All new huts and hostels (and outhouses) ADA accessible



[Video](#)

IT'S HAPPENING!

RIDEABLE NOW:

- Heart of the Greens Loop
- 38 miles of trail
- Connects Pittsfield and Rochester
- Two huts + one inn along the route
- 15+ miles of new and improved trail in 2025
- 100+ miles shovel-ready pending final review



THANK YOU!

RJ THOMPSON
Executive Director
Vermont Huts Association
rj@vermonthuts.org

