

CHAMPLAIN
HOUSING TRUST



Providing Permanently
Affordable Housing in
Northwestern Vermont

Senate Economic Development, Housing & General Affairs Committee

January 16, 2026



Michael Monte
CEO
mmonte@champlainhousingtrust.org

Mission and Overview

The Champlain Housing Trust is a community land trust that supports the people of northwest Vermont and strengthens their communities through the development and stewardship of permanently affordable homes and related community assets.

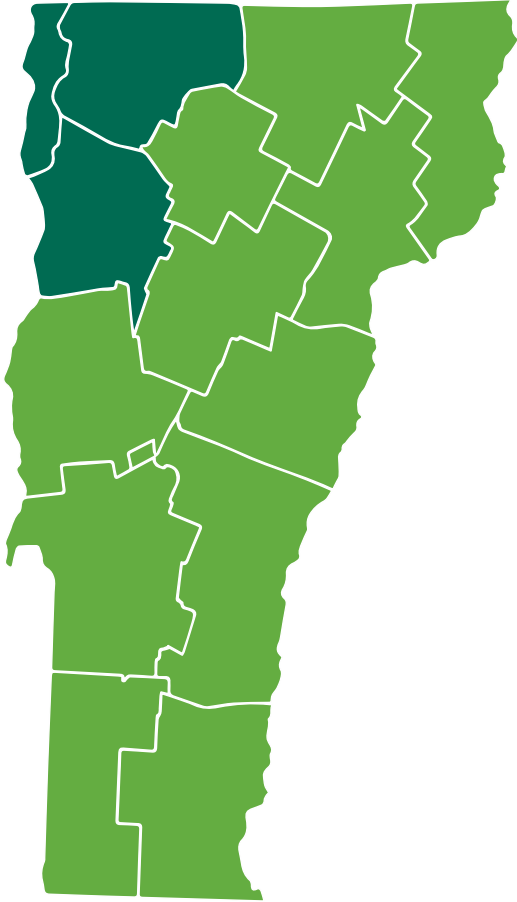
Everything that we do is permanently affordable.

We are governed by a fifteen-member board of directors elected by the membership. One third of the board is made up of **residents** of our housing, one third are **municipal members** and the remaining are **community members** that support our mission.

Housing Opportunity



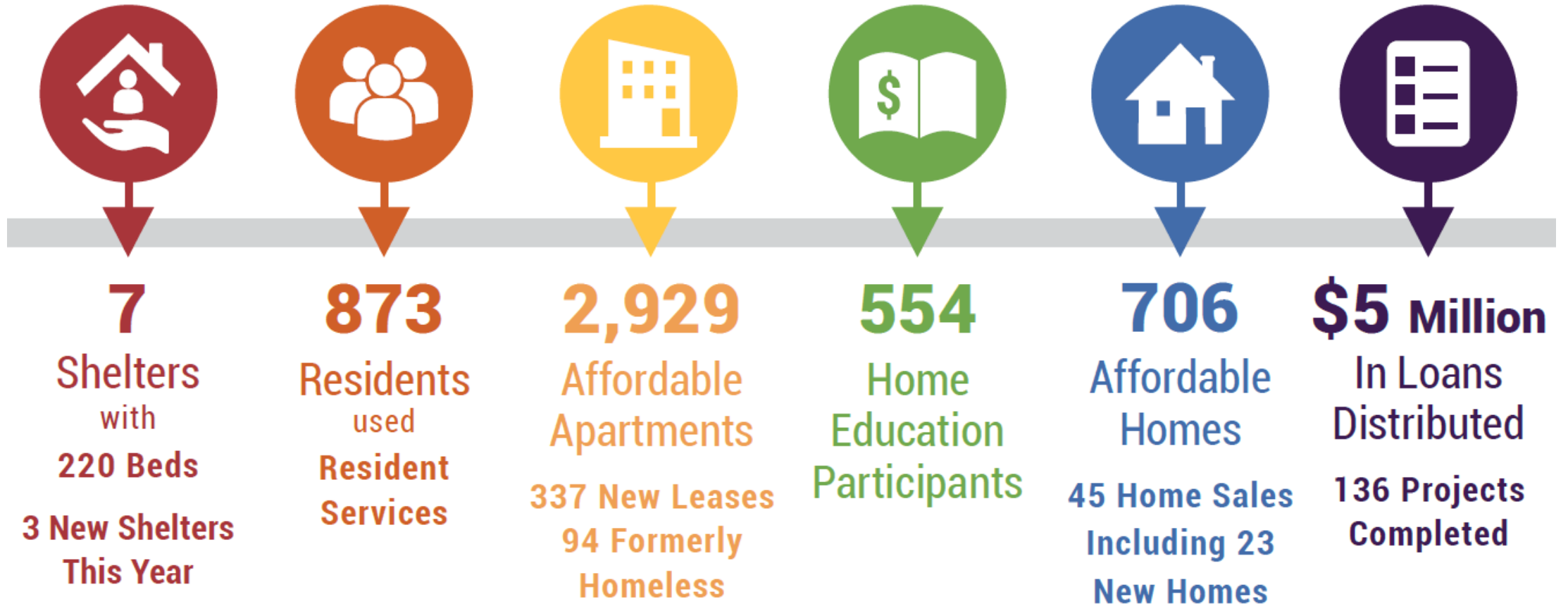
Champlain Housing Trust



Champlain Housing Trust serves the three northwest counties of Vermont

- \$300M+ community assets
- \$31M operating budget
- 158 staff
- 3,015 apartments
- 706 shared equity homes
- 245,000 square feet of Commercial
- Five different loan programs
- Counseling, Education and Resident Services

Community Impact, 2025



10th Cavalry, Colchester

- 65 apartments in three historic buildings
- 15 people moving out of homelessness
- Opened late 2024/early 2025



Bay Ridge, Shelburne – former site of Harbor Place

- 68 apartments, 26 condominiums
- 20 people moving out of homelessness
- Opened summer/fall 2025



Post Apartments, Burlington

- 38 apartments
- 9 people moving out of homelessness, including 5 veterans
- New VFW and Community Justice Center
- Opening in next month or two!



100 Cambrian Way/Shale Beach Condos, Burlington



- 40 apartments, 30 condominiums
- 8 people moving out of homelessness
- Opening in fall 2026/winter 2027

Recovery Housing, Essex



- Three buildings, housing 32 people in recovery
- Support from Vermont Foundation of Recovery
- Building serving women just opened

Shelters



- Tim's House, St. Albans
- Voices, St. Albans
- Spectrum, St. Albans
- Champlain Inn, Burlington
- STEPS, Colchester
- Pearl Street Family Shelter, Burlington

Developmental Disabilities Housing Initiative

- Addition to create total of 10 apartments
- Part of pilot project
- Under construction soon



In the pipeline...

- Windy Ridge, Hinesburg – rental, homeownership, childcare center
- Armory site, Winooski – rental and homeownership
- Ride Your Bike, Burlington's South End – rental, homeownership, childcare, more?

Housing Network Priorities

- A. Supporting Housing Programs That Work**
- B. New Funding for Permanently Affordable Housing**
- C. Addressing Cost**
- D. Landlord-Tenant Law and Community Safety**
- E. Preventing Additional Homelessness**

