

# Vermont Department of Labor

---

**Overview for the Senate Committee on Economic  
Development, Housing, and General Affairs**

**January 16, 2025**

The Department of Labor exists to improve the lives of working Vermonters. Together, we serve the people and businesses of our great state so all of us can live well, be safe, and experience meaningful employment.



# Department Purpose



Working with an **OPERATIONAL EXCELLENCE** mindset

Providing **COMPASSIONATE SERVICE** to everyone

Acting with **PROFESSIONALISM** and **INTEGRITY** in all that we do

Ensuring **EQUITY, ACCESS,** and **BELONGING** for our staff and our customers



# Department Principles

Governor's Office Liaison  
**Amanda Wheeler**

Office of Workforce  
Strategy and Development  
Executive Director  
**Sabina Haskell**

State Workforce  
Development Board

Commissioner  
**Michael Harrington**

Deputy Commissioner  
**Kendal Smith**

Principal Assistant /  
Legislative Liaison  
**Rowan Hawthorne**

Executive Assistant  
**Roger Van Tassel**

Communications  
**Rachel Dumeny**

Workforce Development  
Director  
**Jay Ramsey**

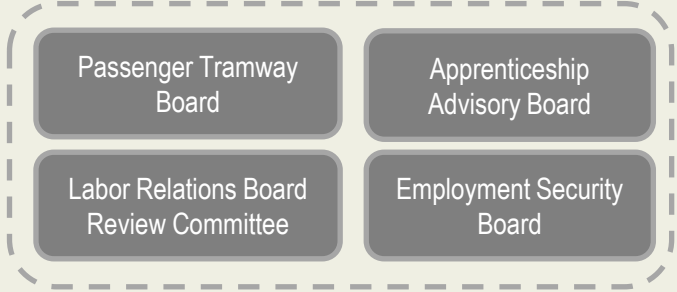
Economic & Labor  
Market Information  
Director  
**Mathew Barewicz**

Unemployment  
Insurance  
UI Associate Director  
**Kristine Murphy**

Workers' Comp & Safety  
Director  
**Dirk Anderson**

Legal Services &  
General Counsel  
**Robert Depper**

Business Administration  
& CFO  
**Chad Wawrzyniak**



# Department Structure

## Workforce Development

11 Regional Offices

State Workforce  
Employment & Training

Operates State/Fed  
Programs

Workforce Innovation &  
Opportunity Act

## Workers' Comp & Safety

Workers' Compensation

VOSHA

Project WorkSAFE

Passenger Tramway

RETAIN

## ELMI

Current Employment  
Statistics

Occupational Safety &  
Health Statistics

Occupational  
Employment & Wage  
Statistics

Short-term & Long-term  
Occupational Projections

## Unemployment Insurance

Benefits

Taxes

Program Integrity &  
Fraud

RESEA

## Legal Services

UI, WC, & VOSHA Legal  
Appeals

Wage & Hour

Government  
Transparency

## Business Office

Facilities

Finance

Contracts & Procurement

Operations, Policies, and  
Procedures

Performance  
Management

EO & Accessibility

# Department Structure

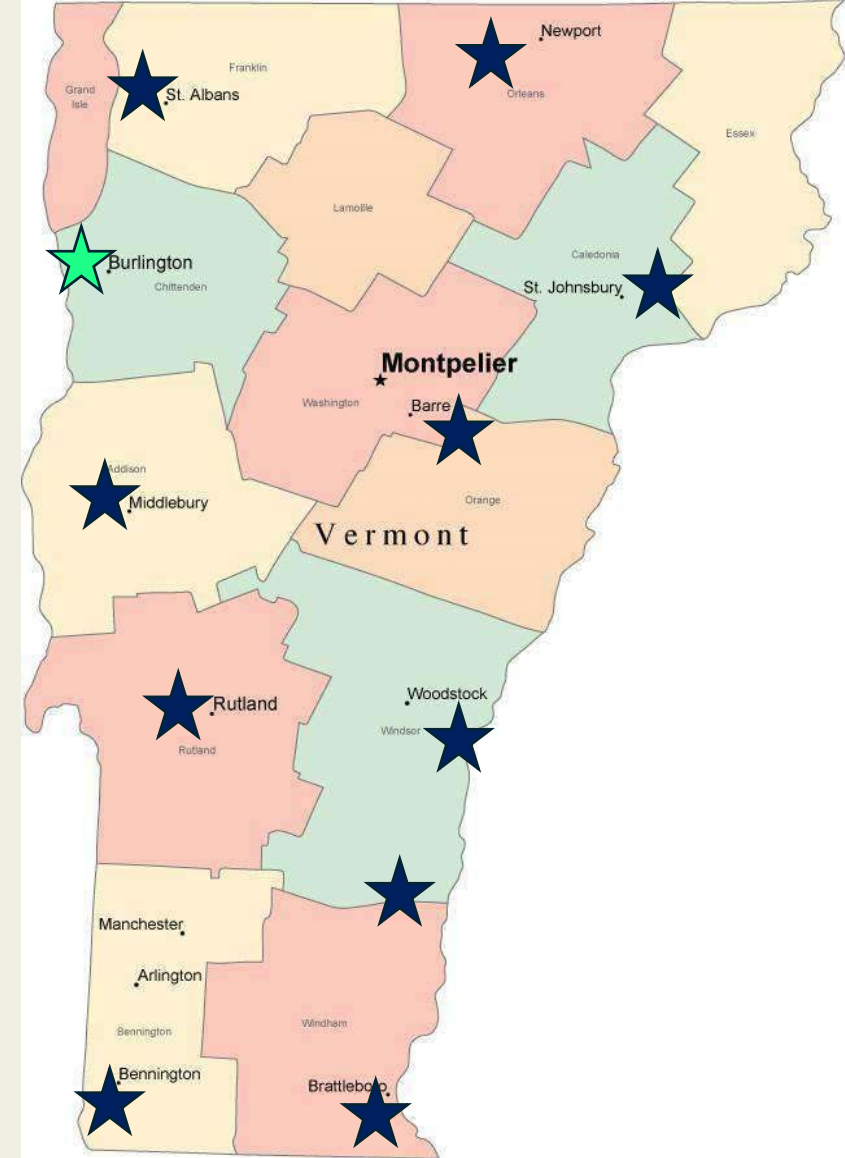


DEPARTMENT OF LABOR

A proud partner of the [americanjobcenter](#) network

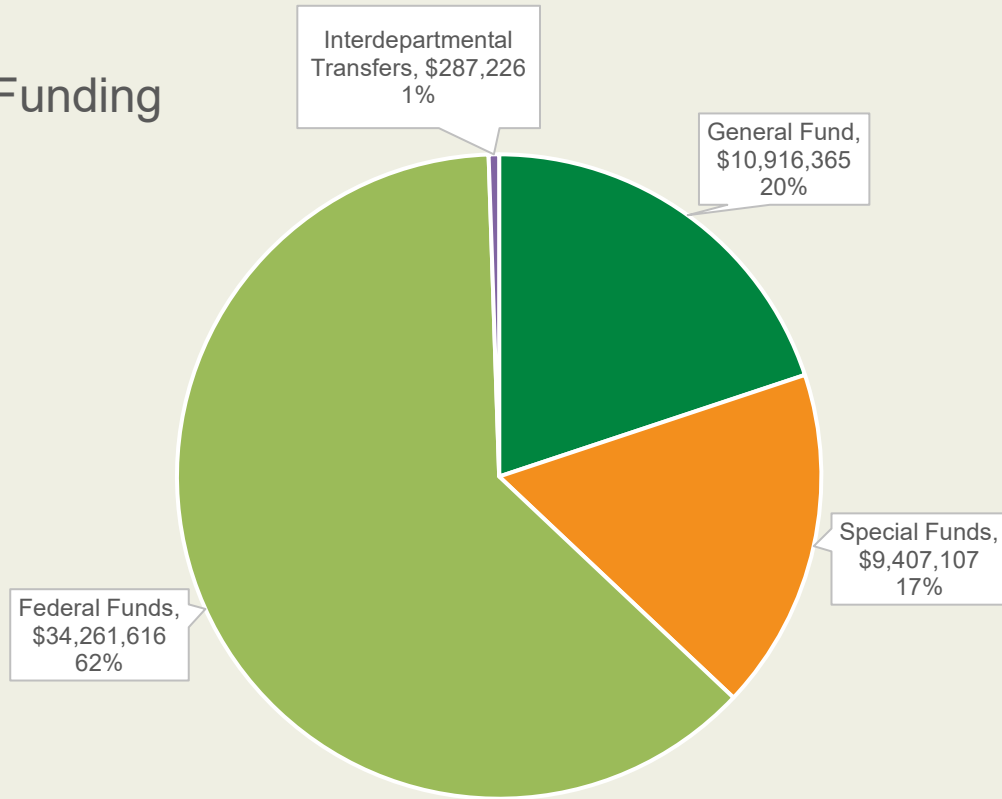
# Job Centers

- Barre
- Bennington
- Brattleboro
- Burlington
- Middlebury
- Newport
- Rutland
- Springfield
- St. Albans
- St. Johnsbury
- White River Junction



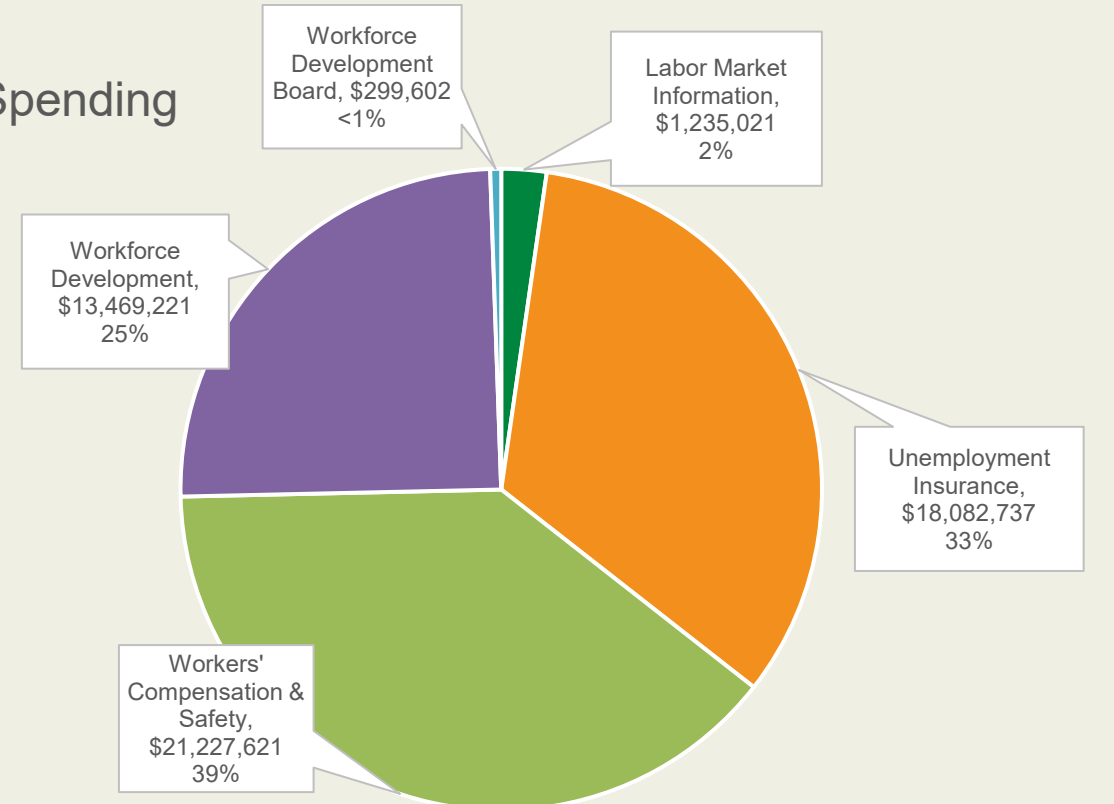
# Department Field Offices

## Funding



- General Fund
- Special Funds
- Federal Funds
- Interdepartmental Transfers

## Spending



- Labor Market Information
- Unemployment Insurance
- Workers' Compensation & Safety
- Workforce Development
- Workforce Development Board

# Department of Labor Funding FY25



## Workforce Development

Employment and Recruitment Services

## Workers' Compensation and Safety

Workplace Safety and Dispute Resolution

## Economic and Labor Market Information

Labor Force and Economic Data and Analysis

## Unemployment Insurance

Employer Taxes and Benefits

# Department Functions



**Director:** Jay Ramsey

**Staff:** ~ 64

The WD division administers federal and state workforce development programs to promote workforce expansion and engagement through trainings, education programs, apprenticeships, and support services.

There are 11 job centers across the state.

11 Regional Office Teams with  
Employment & Training  
Consultants

Refugee & Immigrant  
Employment Services

Registered Apprenticeship  
Programs

Work-Based Learning & On the  
Job Training

Youth Employment & Services

Veterans' Services & Programs

Dislocated Worker Grants

State Training Programs &  
Incentives

# Workforce Development

 VERMONT  
DEPARTMENT OF LABOR

A proud partner of the  americanjobcenter network

**Interim Director:** Kristine Murphy

**Staff:** ~ 87

The Unemployment Insurance division provides short-term benefits to those who lose their jobs through no fault of their own. The UI trust fund is 100% funded by contributions from employers.

Unemployment Benefits Claims Processing

Employer Tax Contributions

Adjudications

Program Integrity & Fraud

Benefits Accuracy Measurement

Re-Employment Services & Eligibility Assessment

Appeals\*

# Unemployment Insurance

 VERMONT  
DEPARTMENT OF LABOR

A proud partner of the  americanjobcenter network

**Director:** Mathew Barewicz

**Staff:** ~ 11

E&LMI is responsible for producing, disseminating, and explaining economic data for the benefit of the State of Vermont.

Target audiences include elected officials, businesses, educational institutes, students, job-seekers, researchers, and the public.

Current Unemployment  
Statistics

Occupational Safety and Health  
Statistics

Local Area Unemployment  
Statistics

Quarterly Census of  
Employment & Wages

Occupational Employment &  
Wage Statistics

Specialized Grants & Federal  
Reporting

Short-term and Long-term  
Occupational Projections

# Labor Market Information

 VERMONT  
DEPARTMENT OF LABOR

A proud partner of the  americanjobcenter network

**Director: Dirk Anderson**

**Staff: ~ 45**

The Workers' Compensation and Safety Division ensures that workers are protected while on the job and if a workplace injury occurs, that the worker is covered by workers' compensation insurance. The Division includes the Workers' Comp, VOSHA, Project WorkSAFE, and Passenger Tramway.

VOSHA enforces both state and federal workplace safety rules and regulations. It also investigates severe workplace injury incidents. Project WorkSAFE provides free, confidential safety consultations to businesses and municipalities to ensure workplace are safe, and Passenger Tramway inspects all of Vermont's ski lifts and new ski lift construction.

Workers' Compensation

Vermont Occupational  
Safety & Health  
Administration

Passenger Tramway

Project WorkSAFE

# Workers' Comp & Safety



A proud partner of the [americanjobcenter](#) network



The Office of Workforce Strategy and Development was created under Act 146 (2024).

It oversees the convening and collaboration of workforce efforts across the State of Vermont and advises the Governor on strategies to strengthen Vermont's workforce.

The Office has an executive director and a staff assistant and works in tandem with the Department of Labor and the Agency of Education.

The State Workforce Development Board falls under the Office and advises the Governor, the Executive Director, and the Commissioner of Labor on the development and implementation of a comprehensive, coordinated, and responsive workforce education and training system, as required under the federal Workforce Innovation and Opportunity Act (WIOA).

The Board has 27 members which include state staff, legislators, workforce training providers, municipal officials, and business owners.

**OWSD Executive Director:**

Sabina Haskell  
sabina.haskell@vermont.gov  
802-798-6693

**SWDB Chair:**

Jay Bellows  
President/CEO  
KORE Power

**Office of Workforce Strategy  
and Development (New)**



- Job Seekers
- Employers
- Workers
- Attorneys / Law Firms
- Training Providers
- Insurers
- Legislators
- Business Owners
- Other States
- Federal Government
- Voters

- Special Interest Groups
- Career Advancers
- Students
- Economists
- Policy Makers

**Constituents**

- Unemployment Benefits
- Workplace Safety Concerns
- Worker Rights
- Wage Complaints
- Re/Employment Services
- Grants
- Data & Information
- Dispute Resolution
- Training Providers

# Constituents

**Policy and Legislative  
Issues**

Rowan Hawthorne  
Legislative Liaison

**Constituent Issues**

Roger Van Tassel  
Executive Assistant

**General Inquiries**

Roger Van Tassel  
Executive Assistant

Michael Harrington, Commissioner  
michael.harrington@vermont.gov

Kendal Smith, Deputy Commissioner  
kendal.smith@vermont.gov

Rowan Hawthorne, Legislative Liaison  
rowan.hawthorne@vermont.gov

Roger Van Tassel, Executive Assistant  
labor.commissioner@vermont.gov  
802-828-4301 (office)

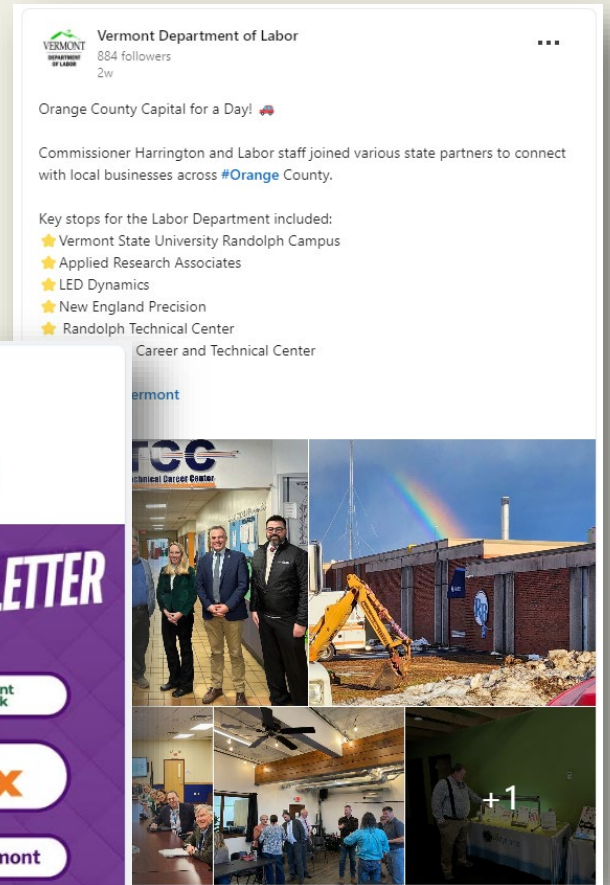
<https://labor.vermont.gov>

**Department Contacts**



A proud partner of the  americanjobcenter network

# Thank You



**Weekly Jobs Newsletter**

EMPLOYMENT OPPORTUNITIES FROM AROUND VERMONT, DELIVERED STRAIGHT TO YOUR INBOX!

**Over 6,900 Jobs!**  
*(Open positions in Vermont and posted on Vermont JobLink as of 1/2/25)*

Visit Vermont JobLink

**This week's featured employer:**

**Consolidated communications**

Click the image above to learn more about the featured employer.

**Consolidated Communications Enterprise Svcs.**

Consolidated Communications Enterprise Services provides advanced communication solutions, including data, internet, voice, and cloud services, to medium and large businesses across a 20-plus state service area. Employees can expect a collaborative work environment that emphasizes innovation and customer satisfaction. The company offers a comprehensive benefits package, including health, dental, and vision insurance, a 401(k) retirement plan, and opportunities for professional development.

**Job Locations:** Alburg, Burlington, Milton, Montpelier, Rutland, White River Junction

**Material Control Specialist** | **VoIP Engineer** | **View All Job Openings!**

Interested in being the featured employer? [Reach out today!](#)

**WEEKLY JOBS NEWSLETTER**

7,100+ Open Positions on Vermont JobLink

Featured Employer: **FedEx**

25 Selected Jobs From Around Vermont

VDOL Is Hiring: UC Claims Adjudicator

Calendar of Upcoming Events

Available Now!

1 Like | 1 Comment