

Senate Economic Development, Housing and General Affairs

April 15, 2025



Vermont
Housing &
Conservation
Board

Gus Seelig
Executive Director

Pollaidh Major
Director of Policy & Special Projects



VHCB Housing Impacts since 2020*

5,124 households served (rental & homeownership)

Total VHCB investment: \$387.7M → Total leverage: \$702.6M

HOMEOWNERSHIP

389 households supported
170 new construction
single-family homeownership units

RENTAL

2,370 total units
1,964 new units
700 homes for unhoused Vermonters

MANUFACTURED HOME COMMUNITIES

27 infill units
1077 lots in 11 communities

FARMWORKER HOUSING

68 repair projects
6 replacement projects
282 farmworkers to be served

SHELTER

24 shelters served total
10 new shelters
571 beds
269 new beds total

RECOVERY RESIDENCES

4 projects
59 residents benefitted

LEAD ABATEMENT

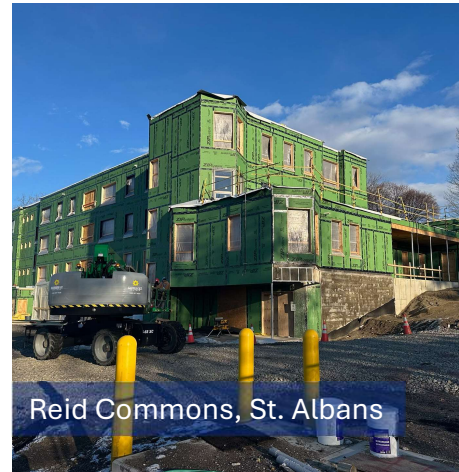
90 households served
70 apartments
20 single-family homes

ACCESSIBILITY IMPROVEMENTS

434 households received accessibility improvements

**January 1, 2020 – January 31, 2025*

Transformational Investments: New neighborhoods



Housing Benefits of VHCB Investments



Permanent
Affordability



Support & Services
at Home



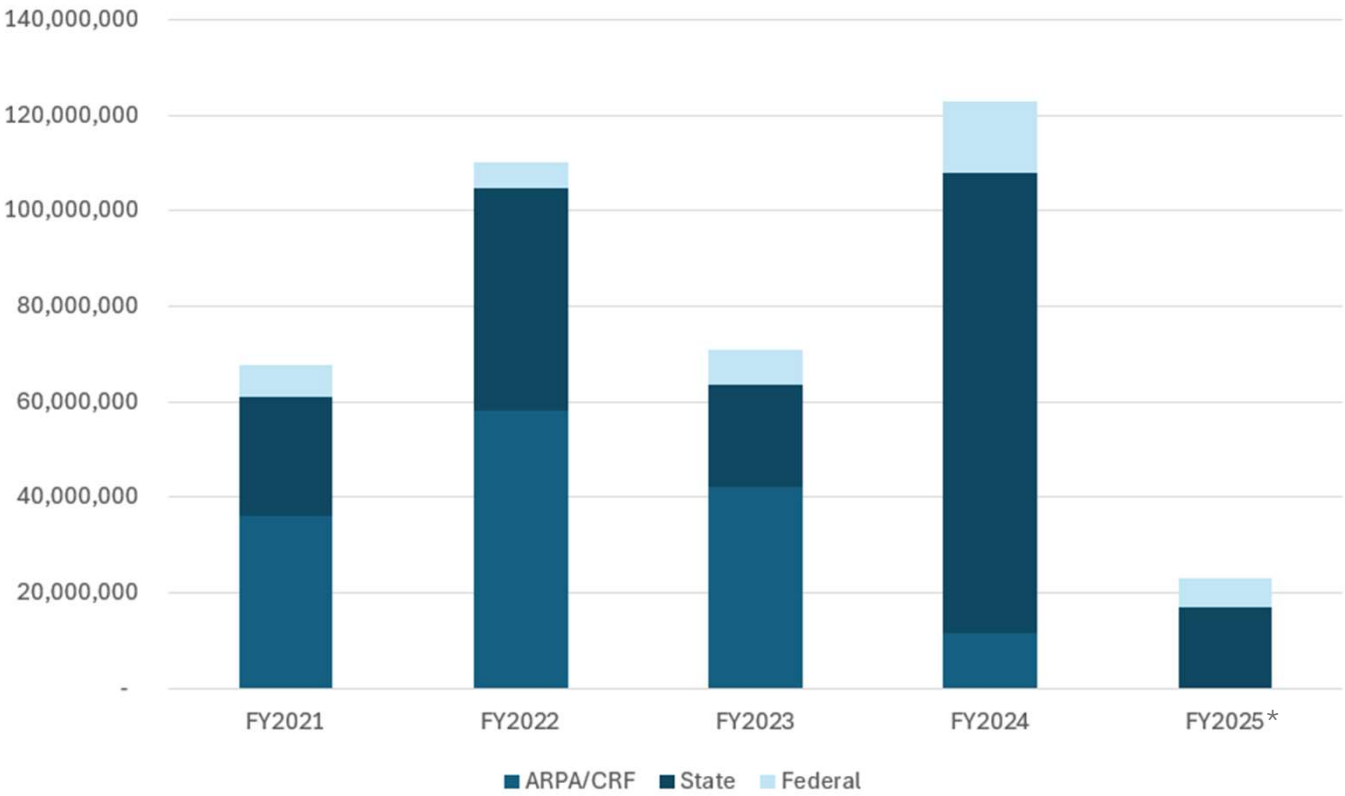
Energy Efficiency &
Climate Resilience



Homeownership

FY2021-FY2025
through 1/31/2025

Housing Commitments by Year



*anticipated commitments based on FY25 budget.

Transformational Investments in Downtowns





Squire House, Bennington
Recovery Residence



747 Hartford Ave, Hartford
Permanent Supportive Housing



Transformational Supportive Housing



Marsh House, Waterbury
Housing for Individuals with Intellectual/Developmental Disabilities (IDD)

Protecting Vulnerable Vermonters

Affordable Housing Units Newly Leased to Households Experiencing Homelessness

Total units turned over in since FY24 (July 1, 2023 - March 31, 2025)	1776
Of these units, number leased to households who experienced homelessness	644
Percentage of turned units leased to households experiencing homelessness	36%

1,659

households experiencing
homeless that VHCB helped
to house since 2020



Bellevue Falls Garage, Rockingham