

H.739

Parkinson's Disease & Paraquat

James Boyd, MD

Professor of Neurological Sciences, UVM Larner College of Medicine

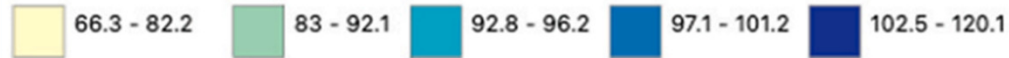
Director, Binter Center for Parkinson's Disease and Movement Disorders - UVM Medical Center



Parkinson's Disease Related Adjusted Mortality – CDC Database

1999-2020

Data classified using quantiles



Z.H. Tharwani et al.

Parkinsonism and Related Disorders 127 (2024) 107110

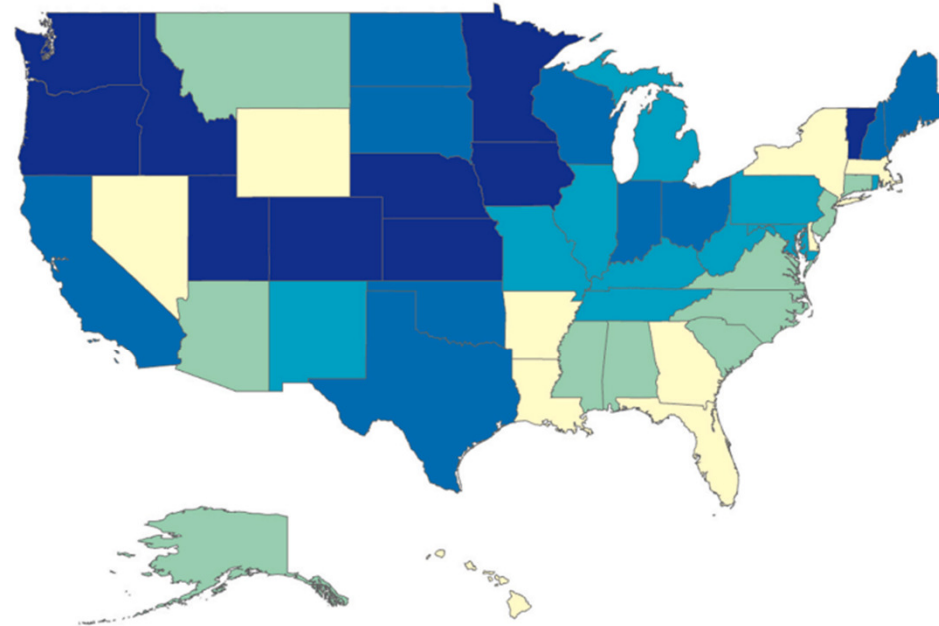
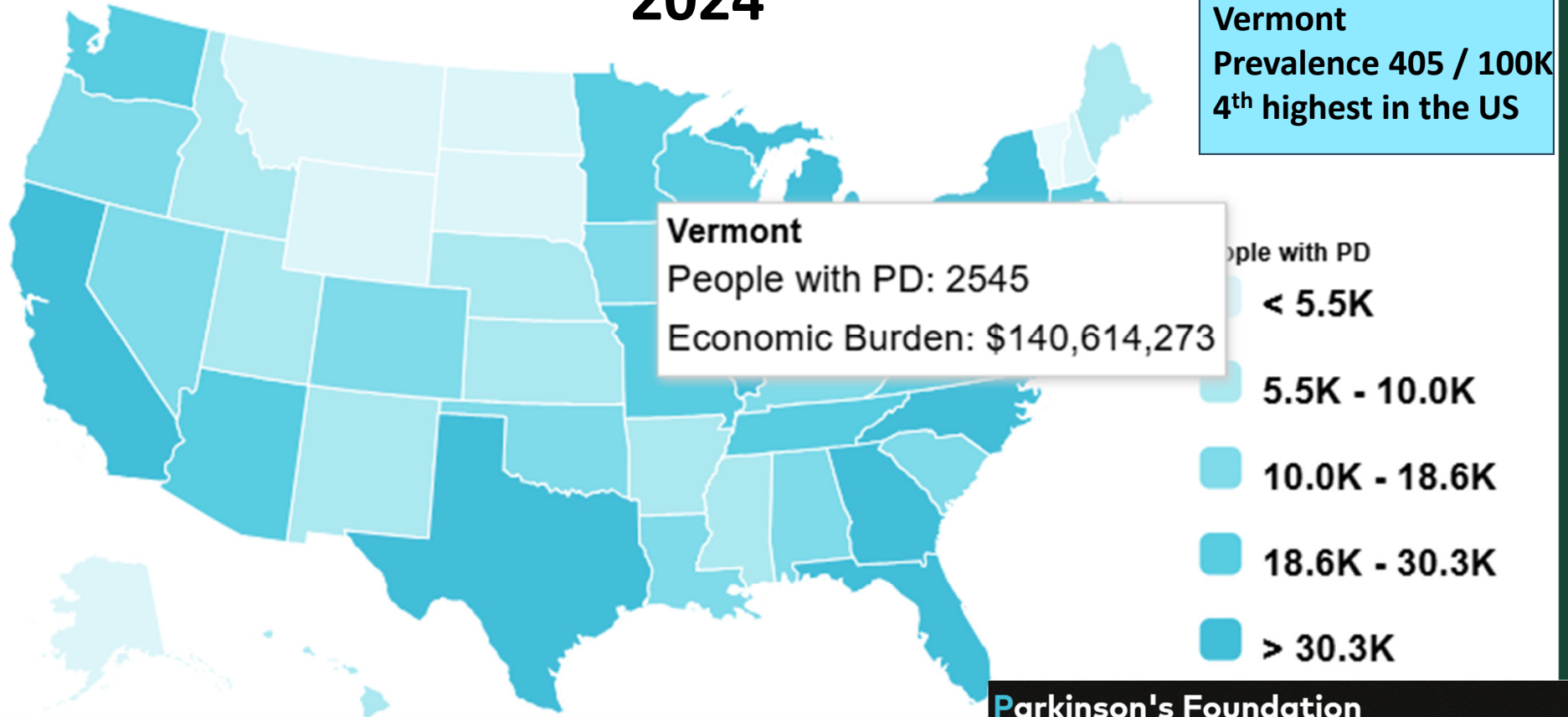


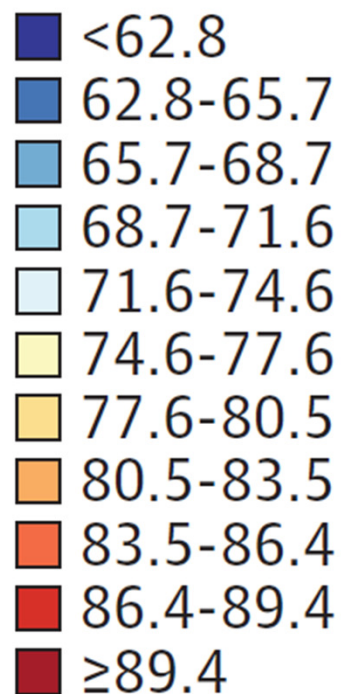
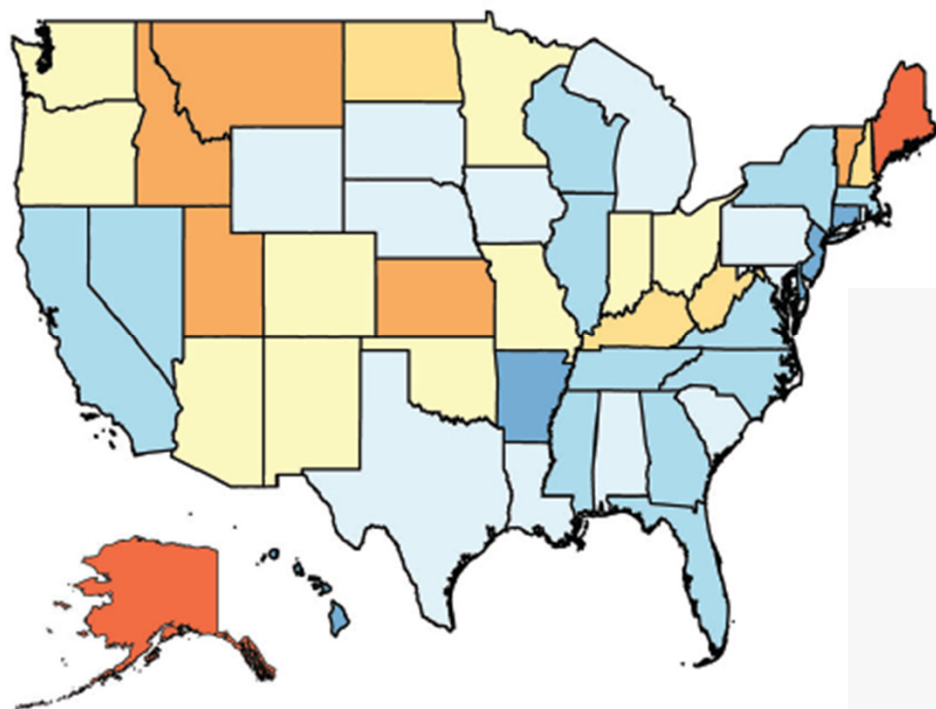
Fig. 3. PD Related AAMRs per 100,000 Stratified by State in the United States, 1999 to 2020. Age-adjusted mortality rate per 100,000 among states, (66.3–120.1).

Parkinson's Prevalence & Economic Burden by State 2024



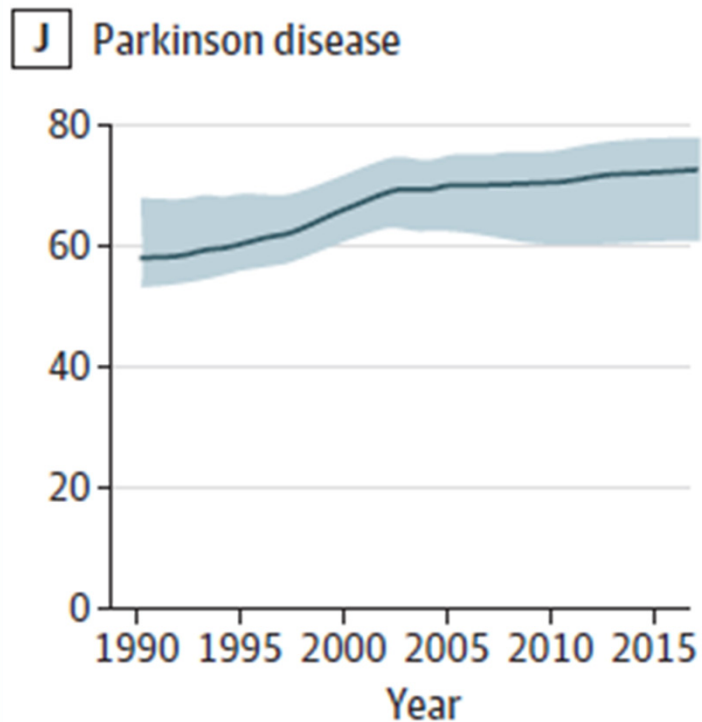
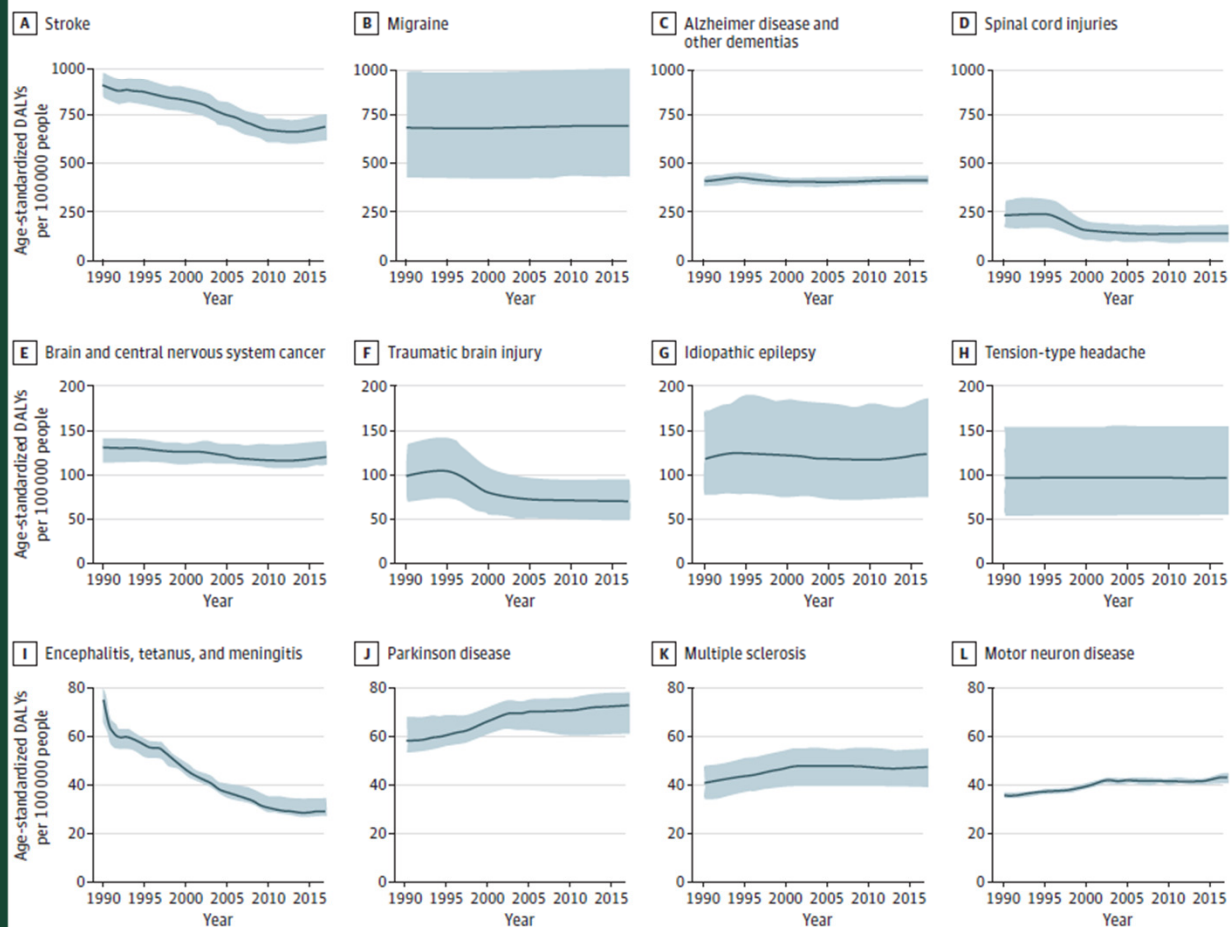
Disability-Adjusted Life Years (DALYs) from Parkinson's Disease "Healthy Years Lost" = Disability + Death **2017**

C Parkinson disease



US-Wide Parkinson's Disease Lost Years Are Trending Up

Figure 1. Temporal Trends in Aggregate US-Wide Age-Standardized Disability-Adjusted Life-Year (DALY) Rates per 100 000 Persons per Year for Neurological Disorders From 1990 to 2017



JAMA Neurology February 2021 Volume 78, Number 2

States with active legislation proposed banning paraquat

