



State House Entrance Design Review

JLMC AND SPECIAL COMMITTEE

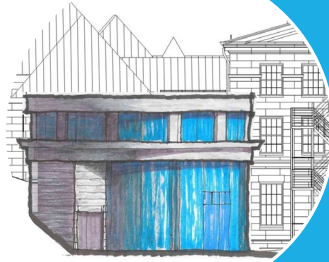
MAY 29, 2025

COMMISSIONER MINOLI, BGS

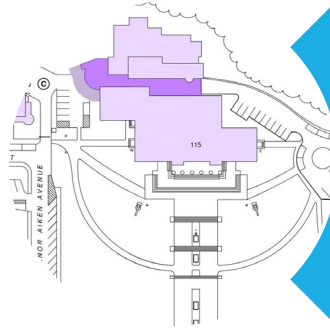
AGATHA KESSLER, SERGEANT AT ARMS

SHAWN BRENNAN, FREEMAN FRENCH AND FREEMAN

AGENDA



Design
Review



Site
Conditions



Decision
Points

State House Entryway- Design Phases

Schematic Design
Conceptual

Design Development
Detailed
November 2025 – August 2026



We are here

Design phases- Funding Already Allocated

Decision Point: Approval to move forward to next phase of design

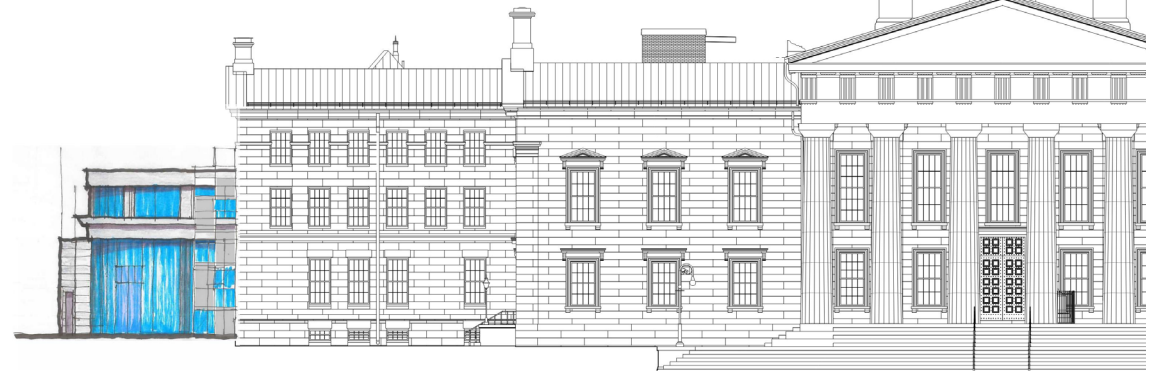
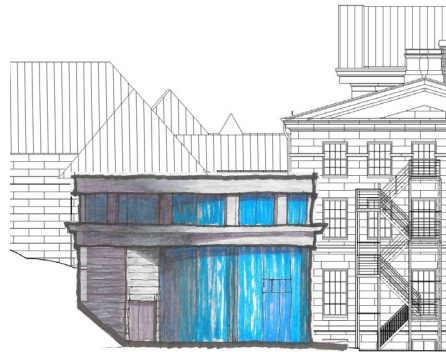
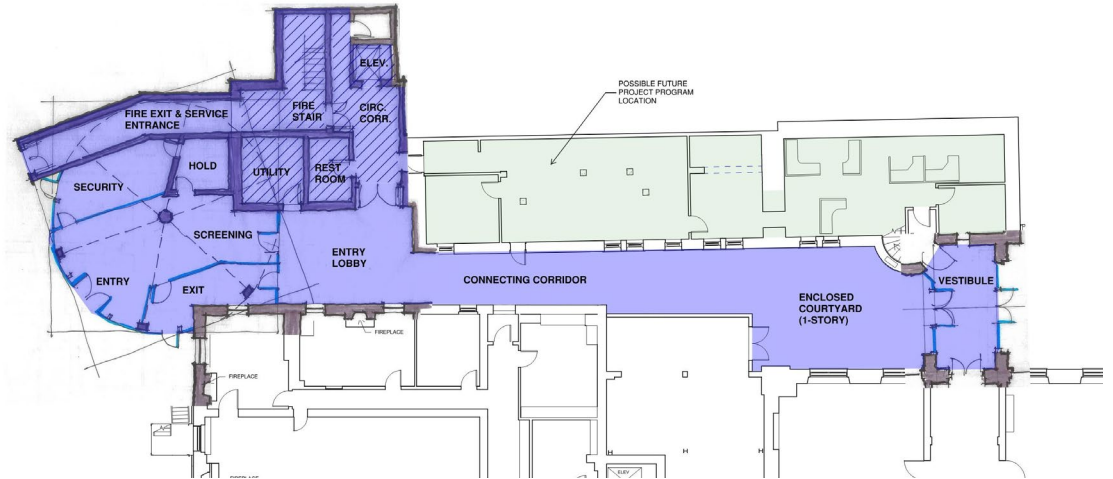


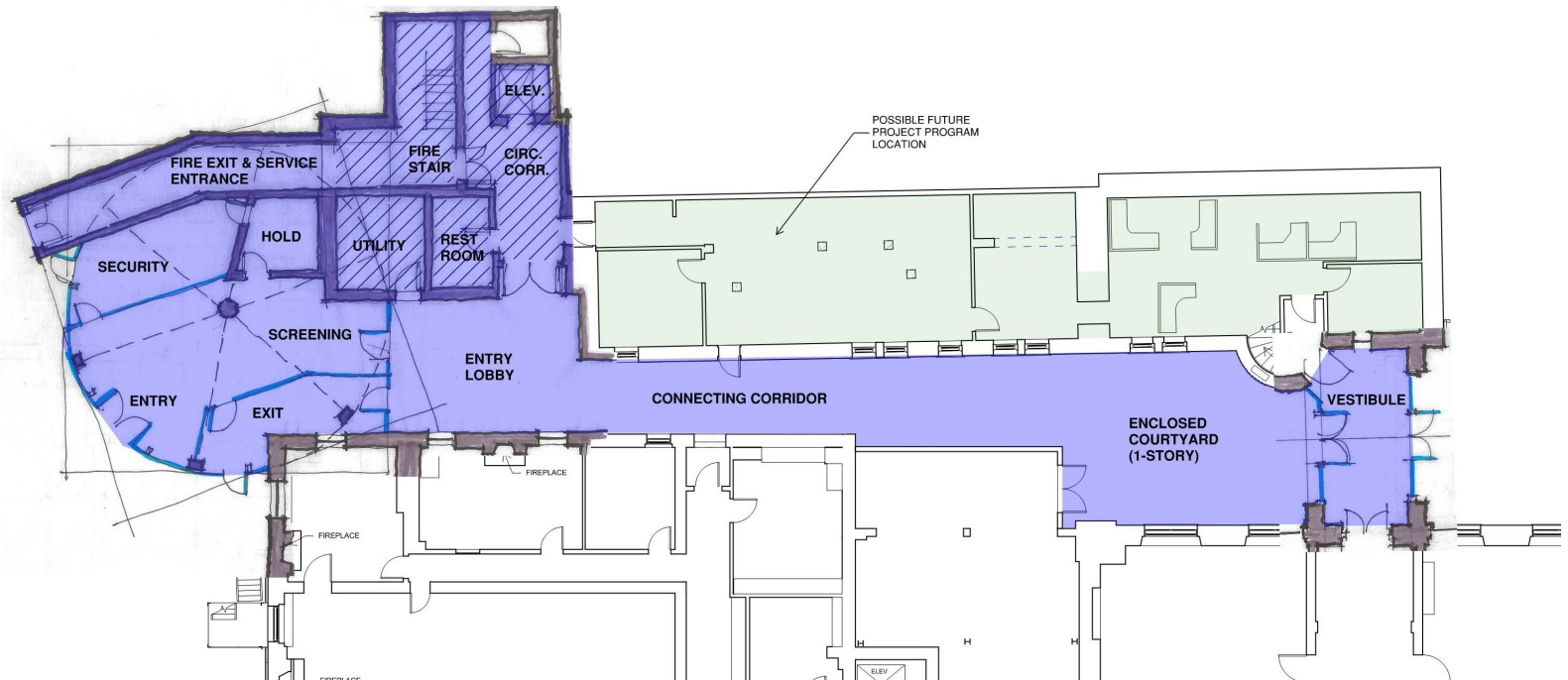
Schematic Design Review*

- Accessibility
- Safety and Security
- Compatible with State House architecture and materials

Construction	\$17,223,995
Site Work/Landscaping	\$1,435,470
Allocated Capital Bill Funding	-\$150,000
Allocated ARPA Funding	-\$696,000
Estimated Project cost	\$17,813,465

**Conceptual design. Final design, materials, and refined estimates determined during design development phase.*



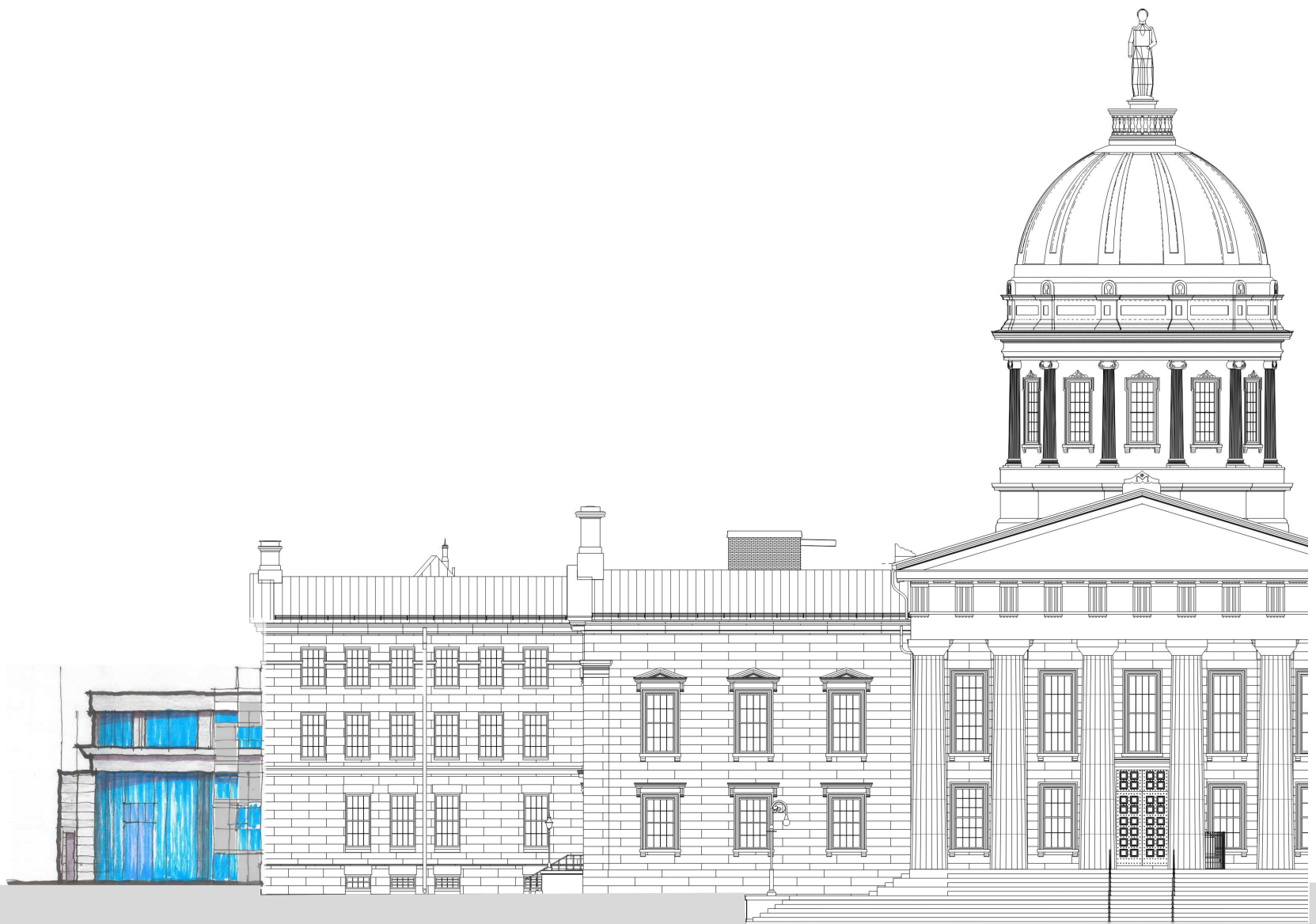


Access and Security

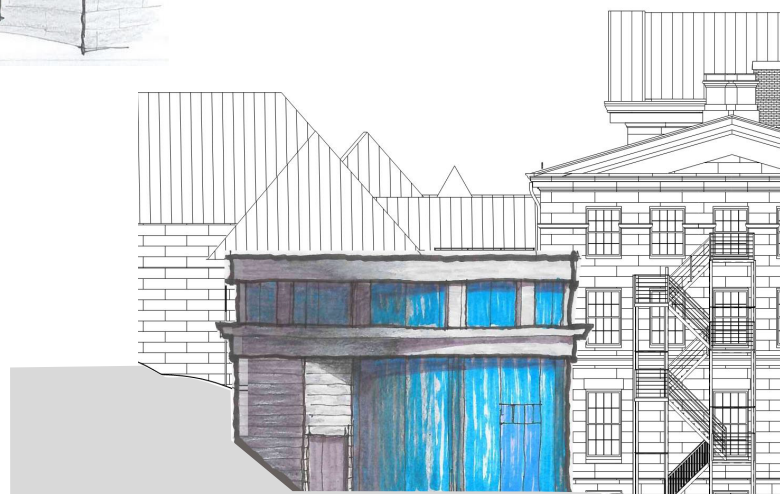
- Entrance with one-way traffic
- Separate entrance for deliveries
- Screening space
- Connection to Lincoln hallway

Immediately available at entryway:

- Security
- Restroom
- Elevator and Stairs
- Greeting and Information



Proposed South Elevation Sketch



Proposed West Elevation Sketch

- Next Steps

-
- The site plan shows the layout of the Governor Aiken Avenue area. A large building footprint, labeled '115', is the central feature. To its left is a smaller building footprint labeled '1'. The plan includes parking lots, a street labeled 'GOVERNOR AIKEN AVENUE', and a street labeled 'STREET'. A north arrow is located in the upper right corner. The plan also shows a building footprint labeled 'C' and a building footprint labeled '1'.

Decision Point

Schematic Design
Conceptual Design

Design Development
Detailed Design
November 2025 – August 2026



We are here

Design phases- Funding Already Allocated

Decision Point: Approval to move forward to next phase of design