

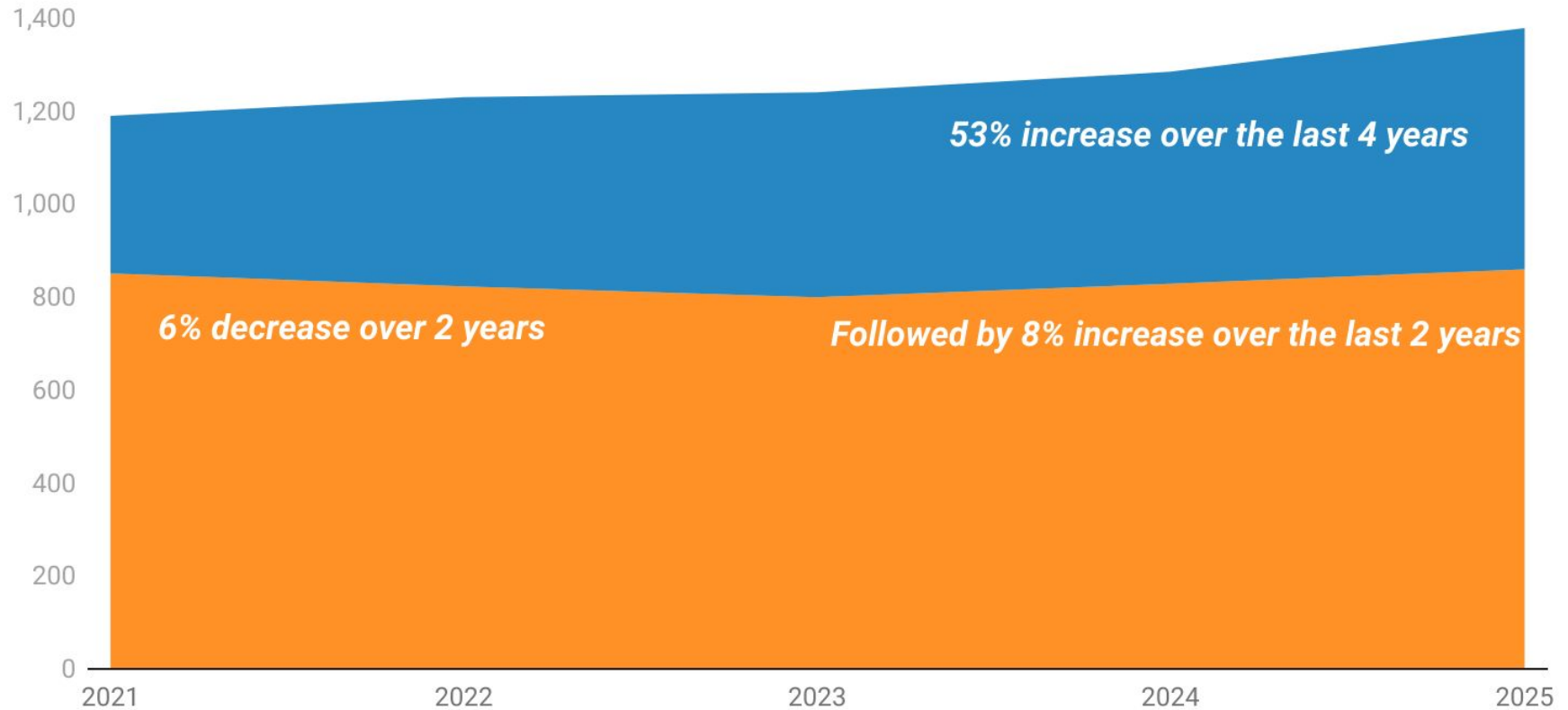


# Department of Corrections

Joint Justice Oversight

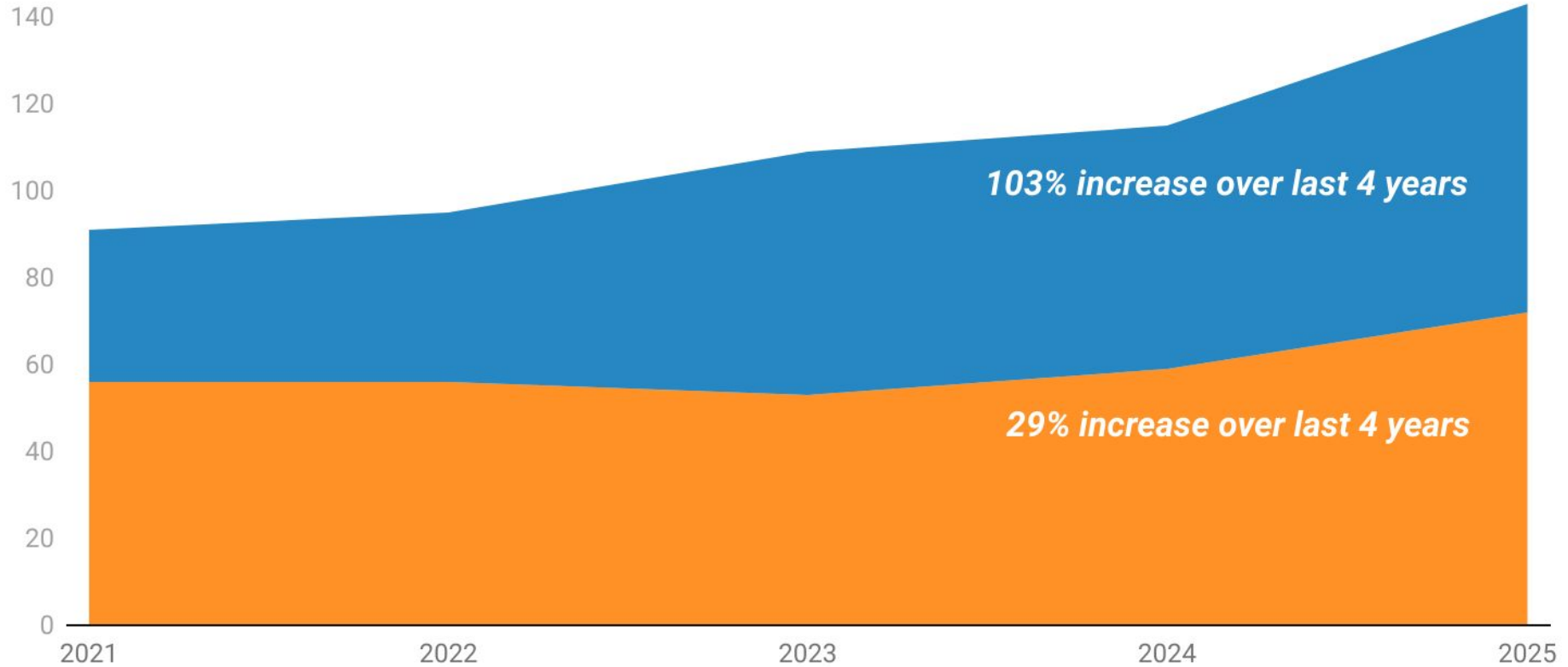
December 15, 2025

## Sentenced & Detained State Male Population: 2021 to Present



Excludes federal holds

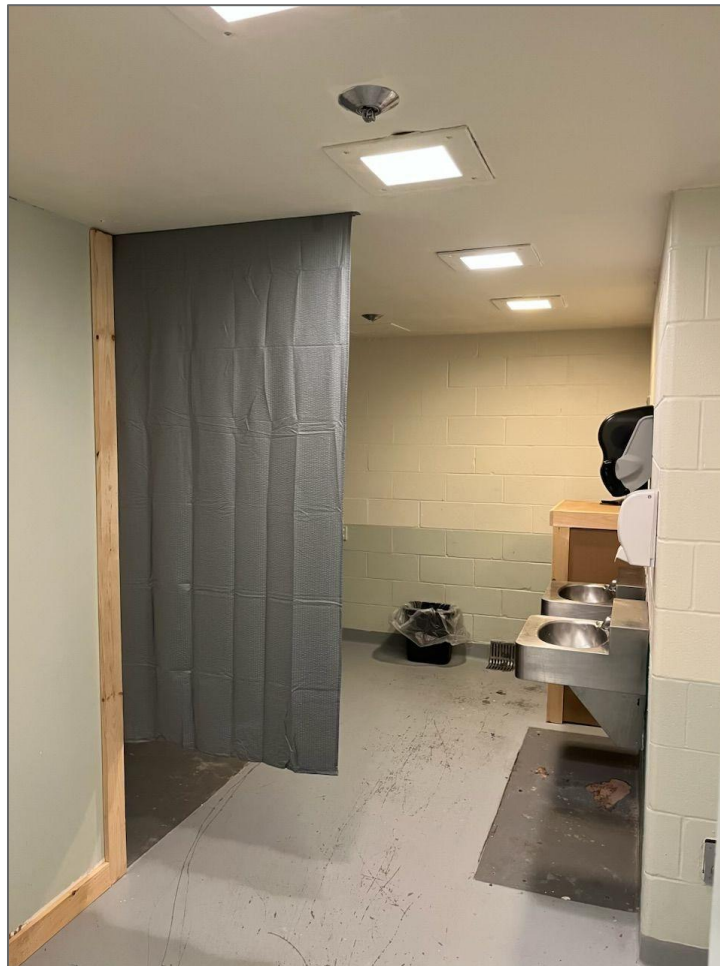
## Sentenced & Detained State Female Population: 2021 to Present



*Excludes federal holds*



*Temporary housing at Chittenden Regional Correctional Facility*





# Questions?

# Contact



**Haley Sommer**

**Director of Communications & Legislative Affairs**

**(802) 793-9075 • [haley.sommer@vermont.gov](mailto:haley.sommer@vermont.gov)**

**Constituent Services**

**[ahs.docconstituentmanagement@vermont.gov](mailto:ahs.docconstituentmanagement@vermont.gov)**



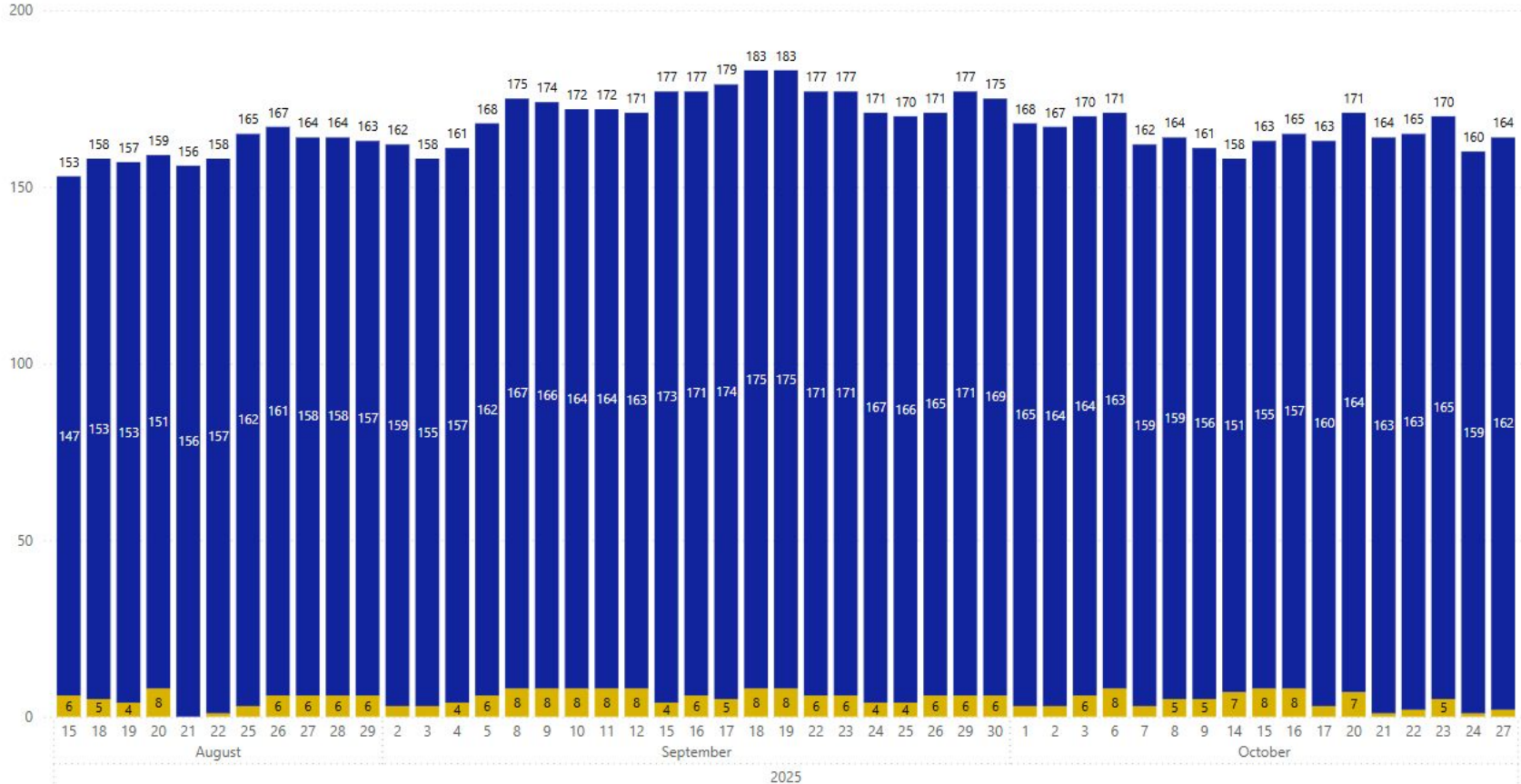
# Appendix



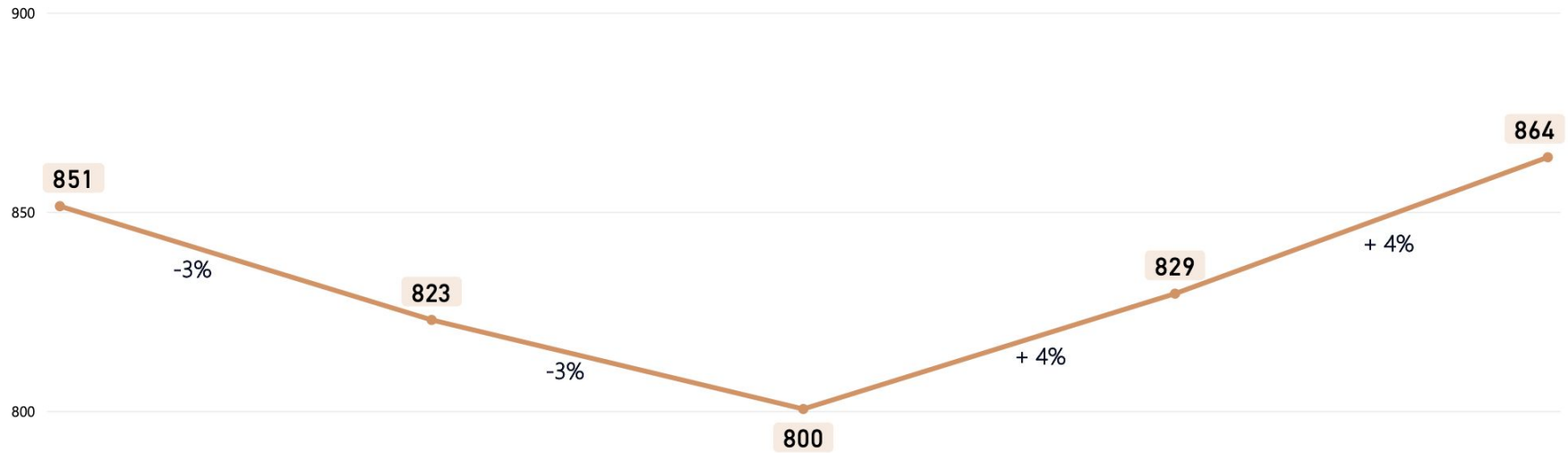
# Chittenden Regional Correctional Facility: Total Incarcerated & Immigration Detainers Since 8/15/2025



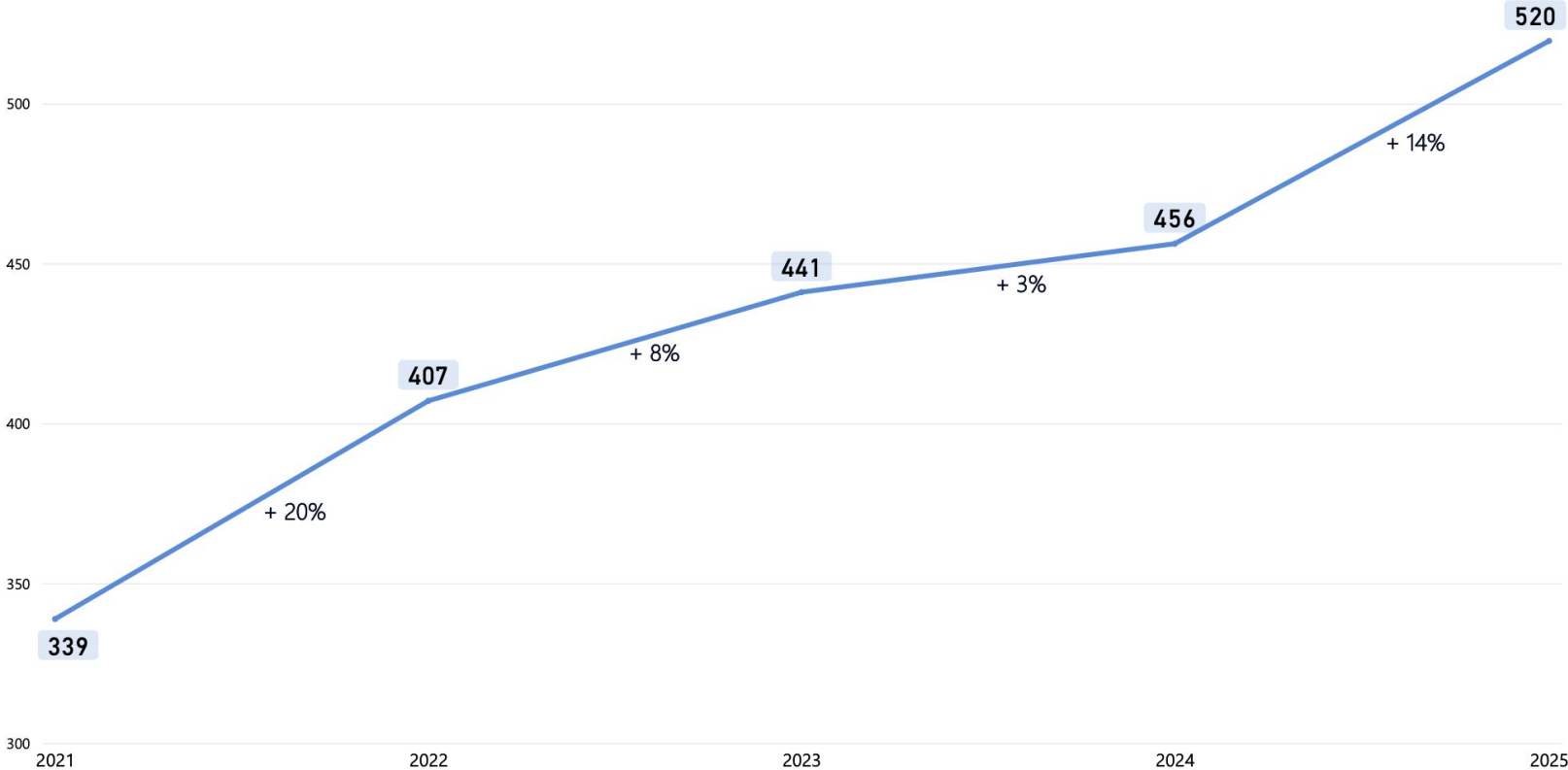
● Immigration Detainers ● All Others Incarcerated at CRCF



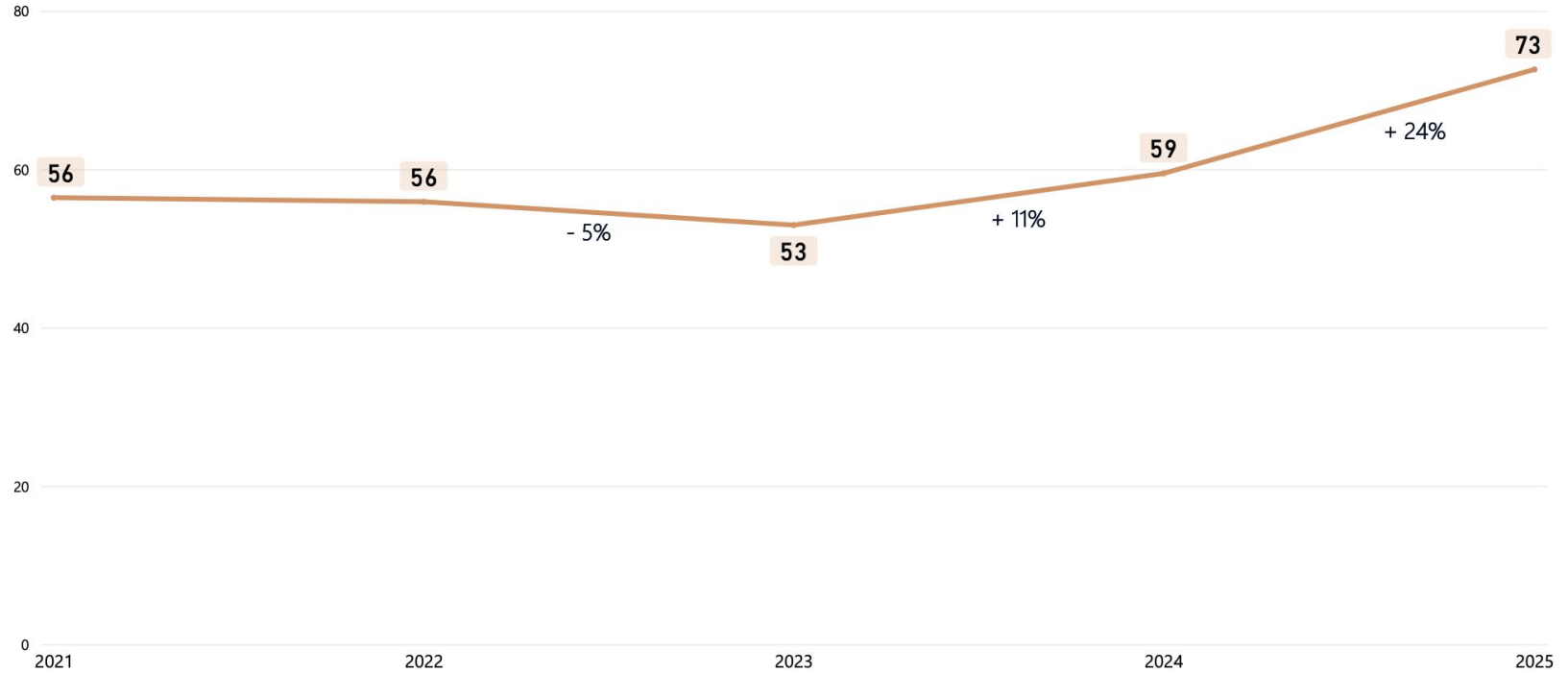
## Sentenced Male Population: 2021 to Present



# Detained Male Population: 2021 to Present



## Sentenced Female Population: 2021 to Present



## Detained Female Population: 2021 to Present

