

Vermont School Funding

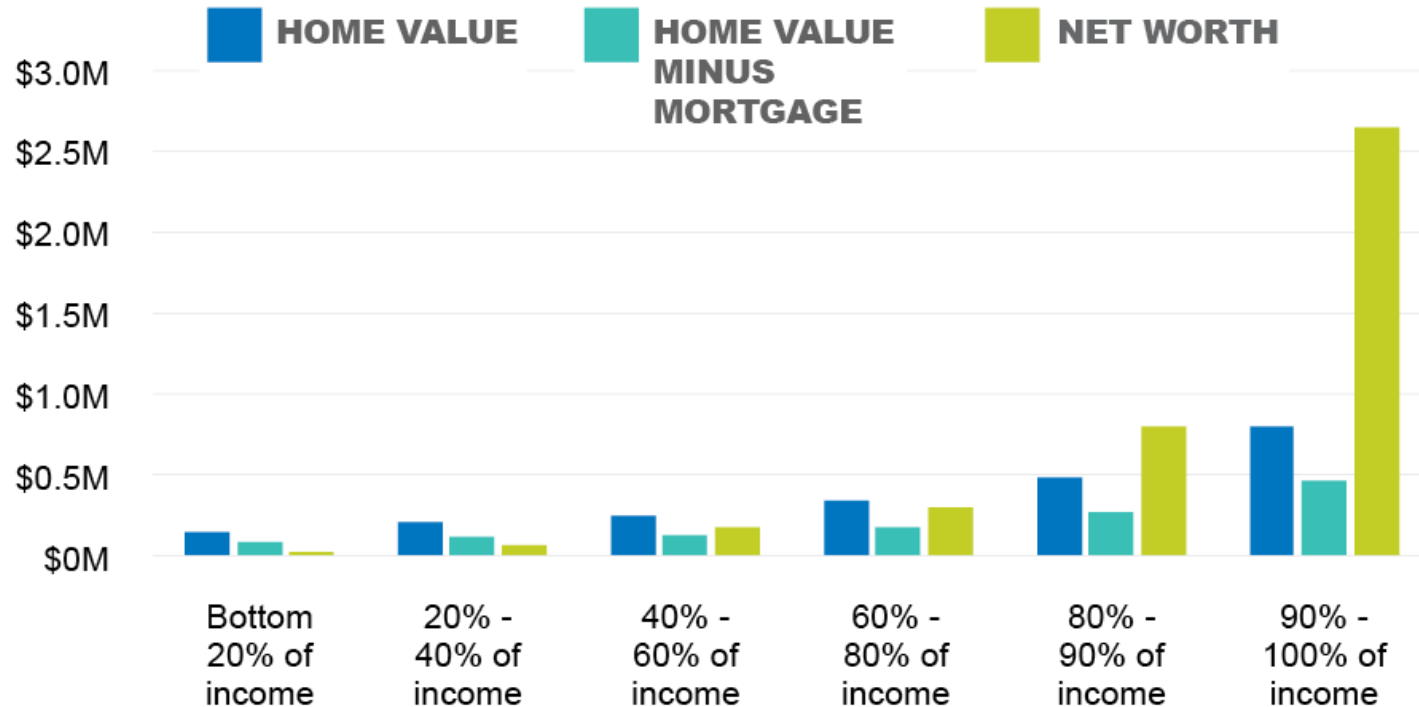
Good public schools and fair taxes

March 26, 2025



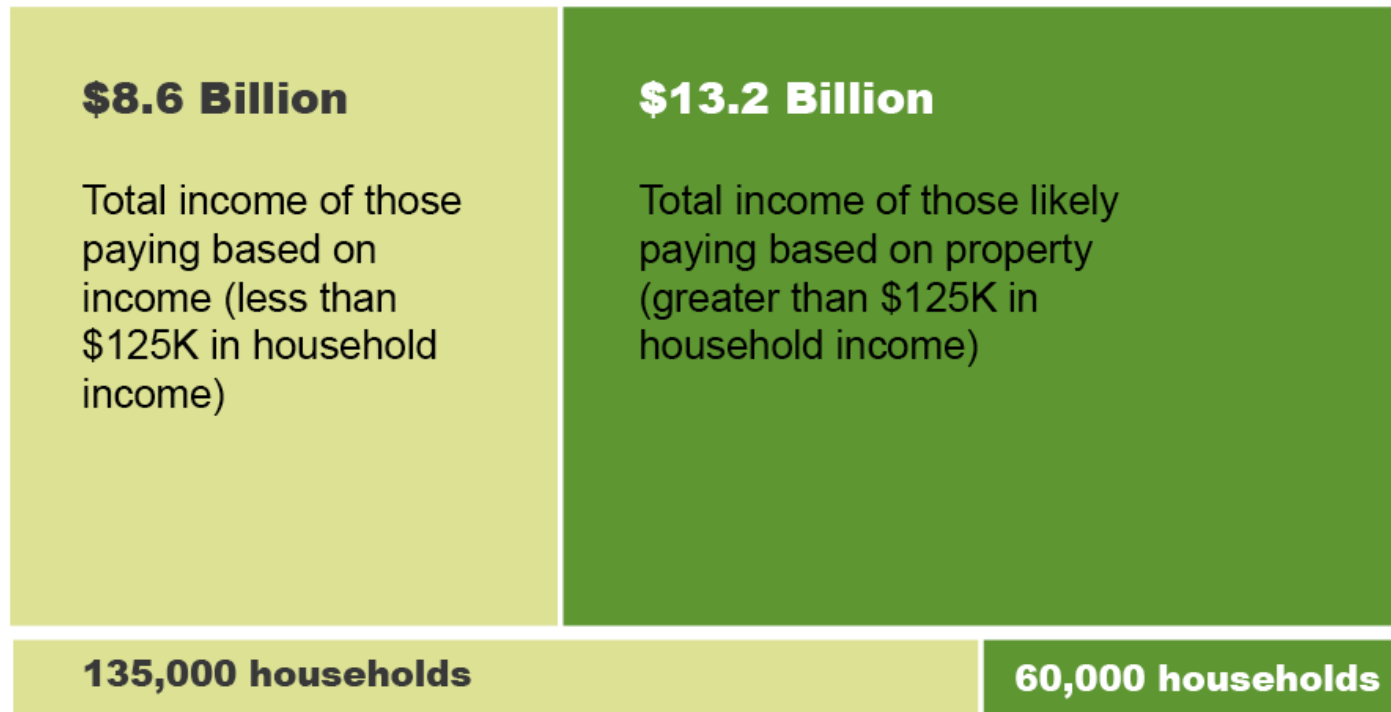
Primary home value overstates wealth for lower-income households, and understates it for the wealthy

Median home value, median home equity and median net worth, by income percentile, 2022



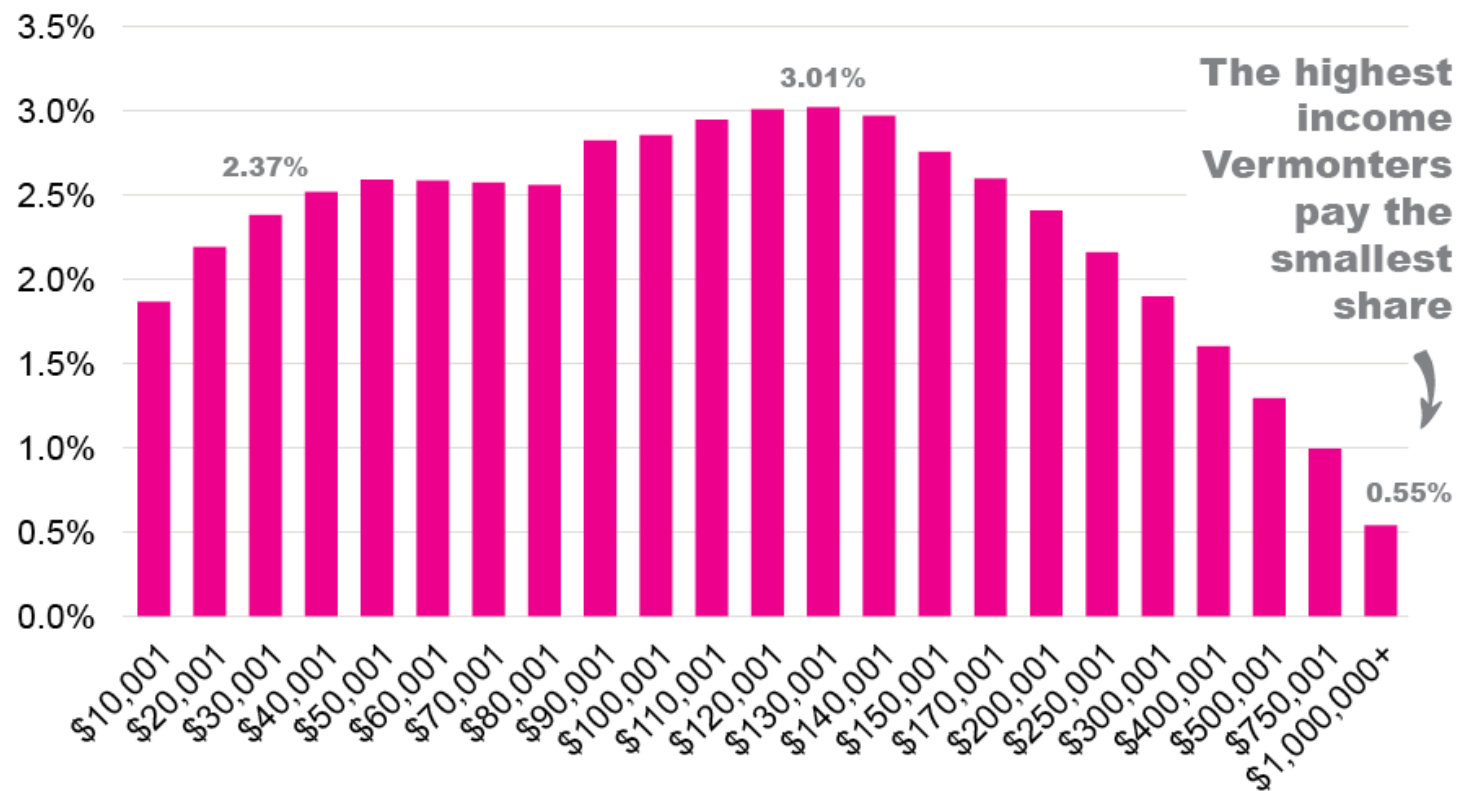
The Vermonters with the most income pay school taxes based on property rather than income

Share of adjusted gross income for homeowners above and below \$125,000 in household income, 2023



Low- and middle-income Vermonters pay more of their income in school taxes than the richest Vermonters

Education tax as a percentage of household income, 2017



Recent population growth from migration is mostly from high-income families

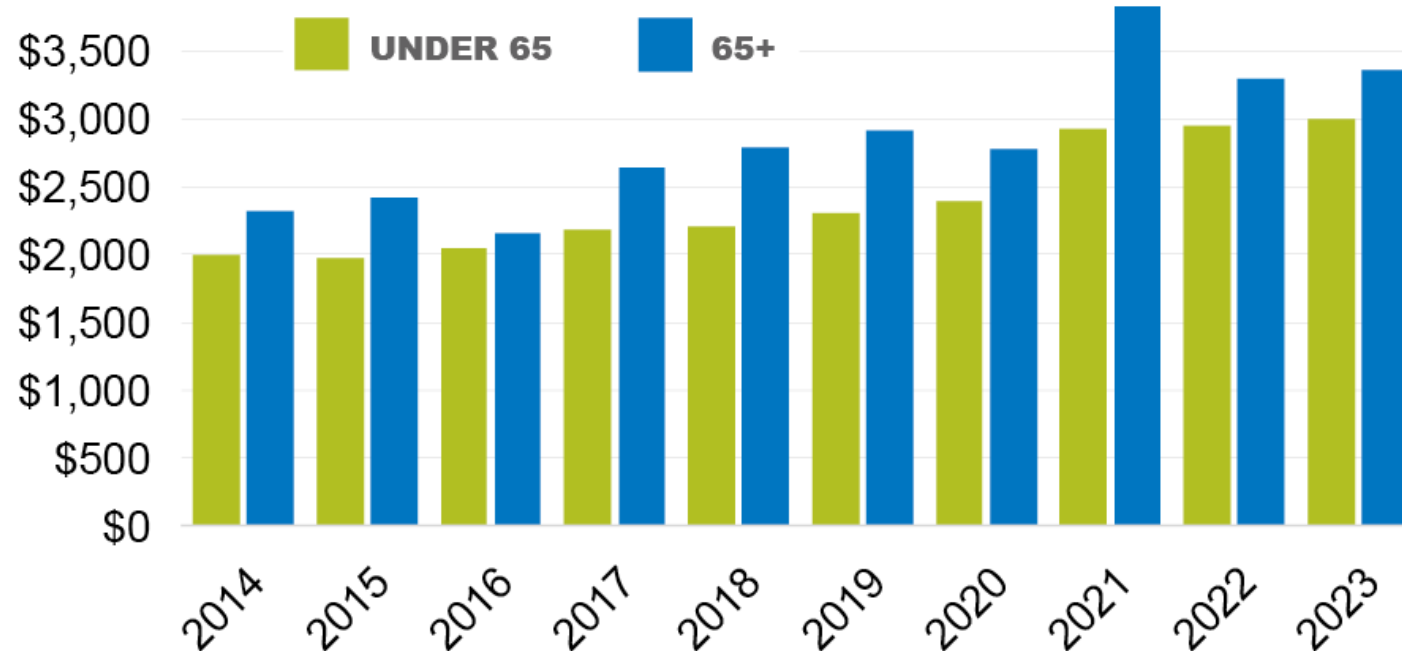
Net migration of tax filers to Vermont, by income, 2019-2022



Data source: IRS Statistics of Income
 ©2025 Public Assets Institute

Vermont seniors have more income and pay more in taxes per return

Vermont personal income taxes paid, per return, by age group, 2014-2023



Data source: Vermont Department of Taxes
 ©2025 Public Assets Institute

Find Public Assets at: **publicassets.org**

Email us at: info@publicassets.org steph@publicassets.org

@PublicAssets

@PublicAssetsInstitute

