

Vermont School Funding

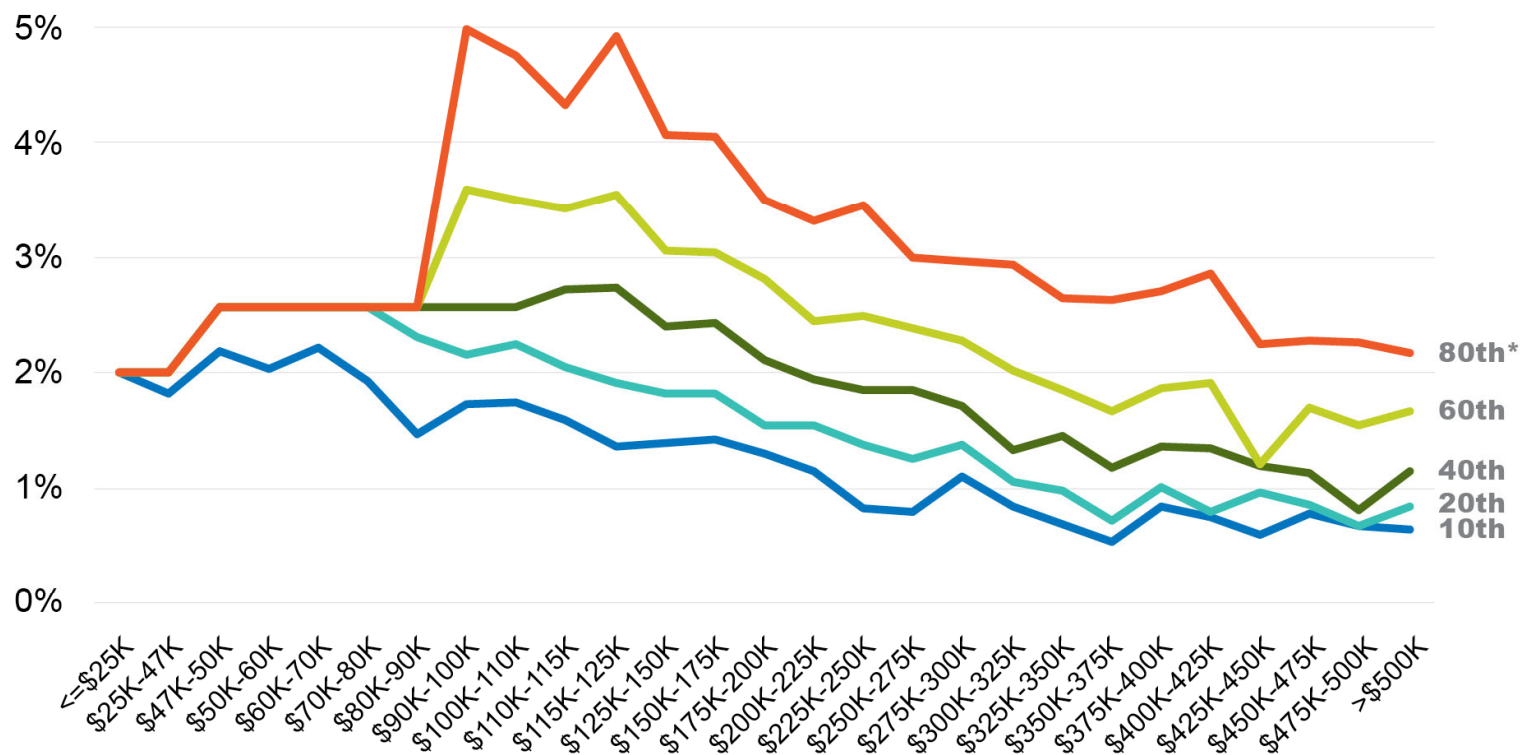
Making school taxes fairer

April 3, 2025



The current funding system favors the wealthy

Taxes as a percent of median income by percentile of house value, 2023



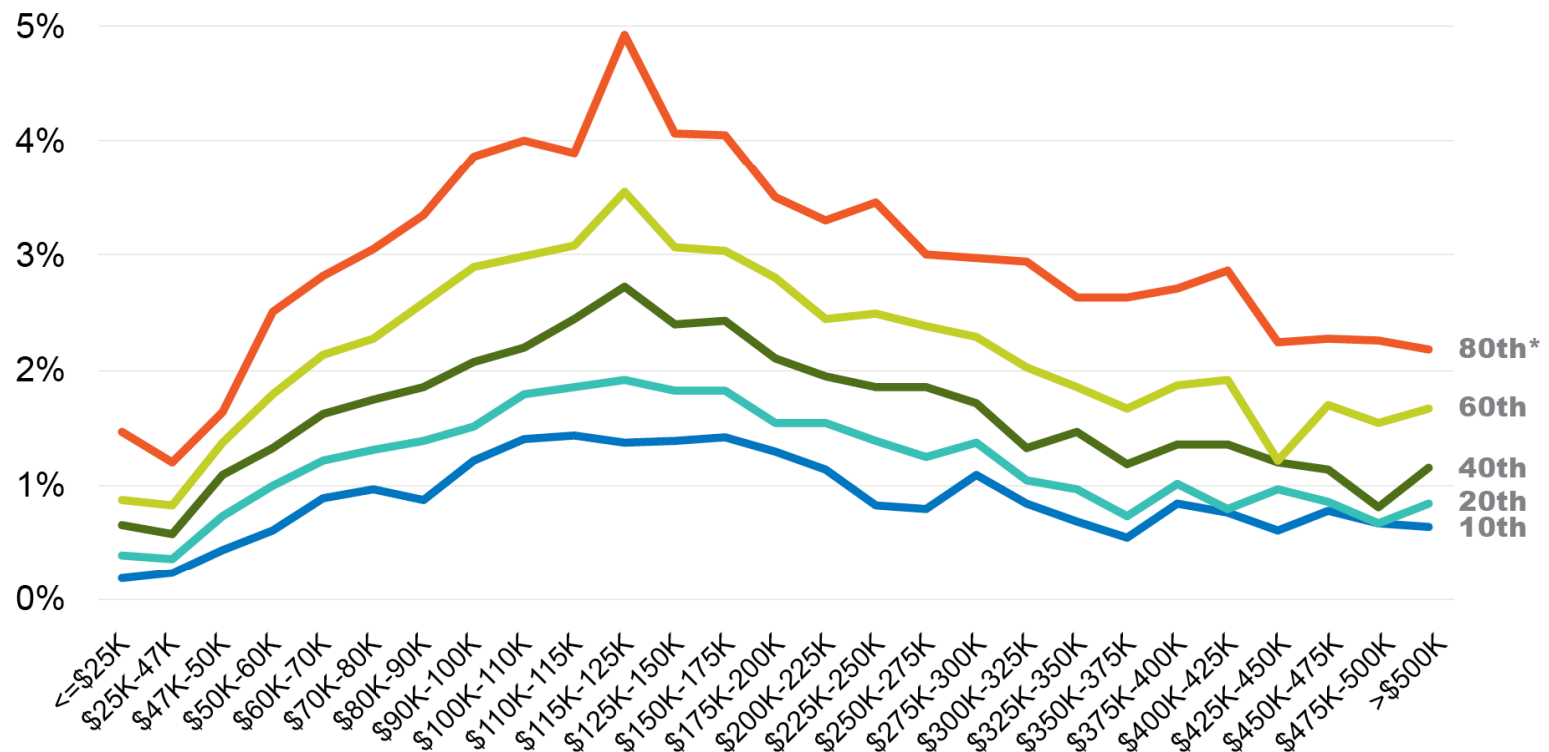
* Percentile of house value for income bracket

Data source: IPUMS American Community Survey, 2023 5-yr estimates

©2025 Public Assets Institute

Proposed system would still favor wealthy, even with exemptions

Taxes as a percent of median income by percentile of house value, 2023



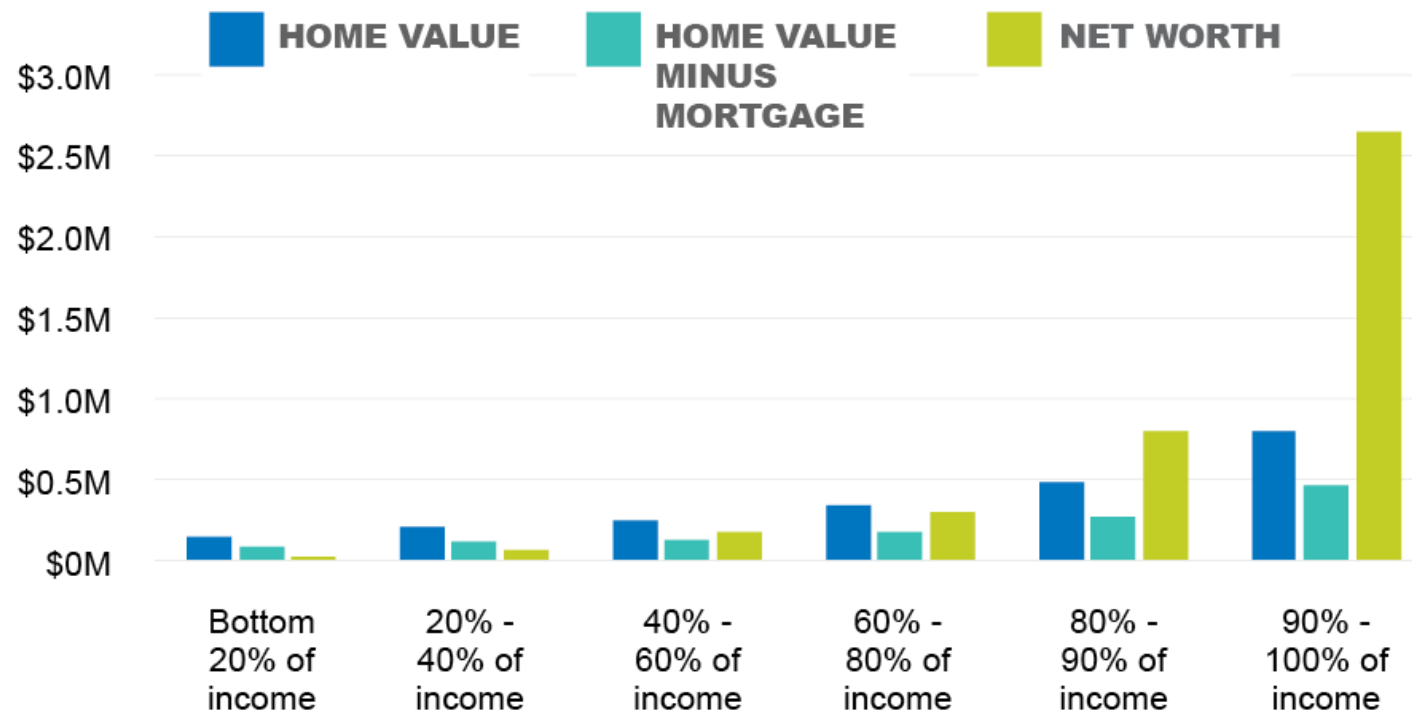
* Percentile of house value for income bracket

Data source: IPUMS American Community Survey, 2023 5-yr estimates

©2025 Public Assets Institute

Primary home value overstates wealth for lower-income households, and understates it for the wealthy

Median home value, median home equity and median net worth, by income percentile, 2022



Data source: Board of Governors of the Federal Reserve, Survey of Consumer Finances, 2022
 ©2025 Public Assets Institute

Find Public Assets at: **publicassets.org**

Email us at: info@publicassets.org steph@publicassets.org

@PublicAssets

@PublicAssetsInstitute

