



# 2025 Airport Update

House and Senate Transportation  
Committees

January 31, 2025

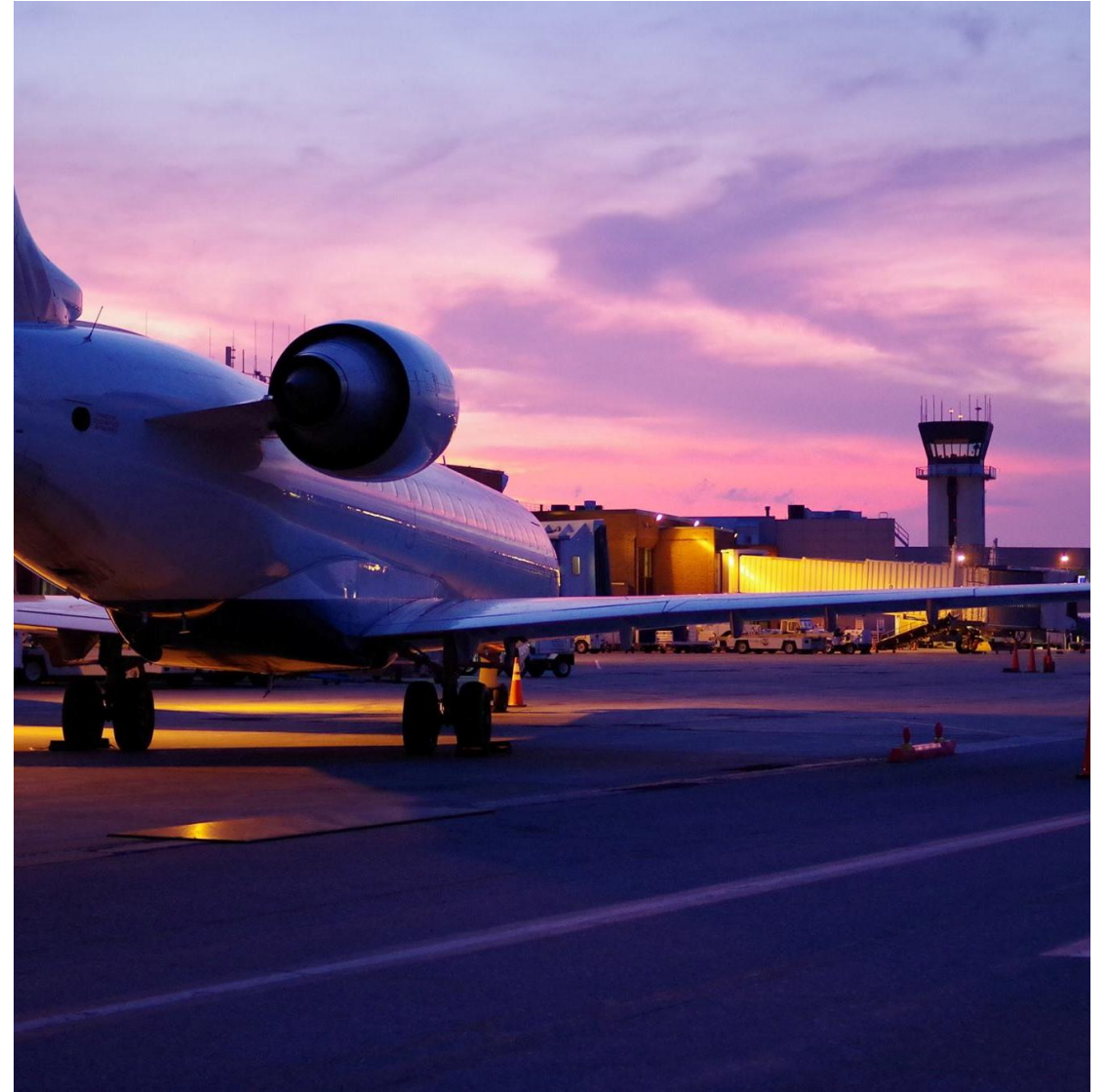
Nic Longo | Director of Aviation

Jeff Bartley | Director of Innovation &  
Marketing



# What's happening at Leahy BTV

- Who we are and where we go
- Challenges, opportunities and industry Changes
- Passenger Growth
- Carbon Accreditation
- Project NexT and Community Path



**You can build a mile of road  
and travel a mile, or you can  
build a mile of runway and  
travel the world.**

# Who is Leahy BTV?

## Small-Hub Airport

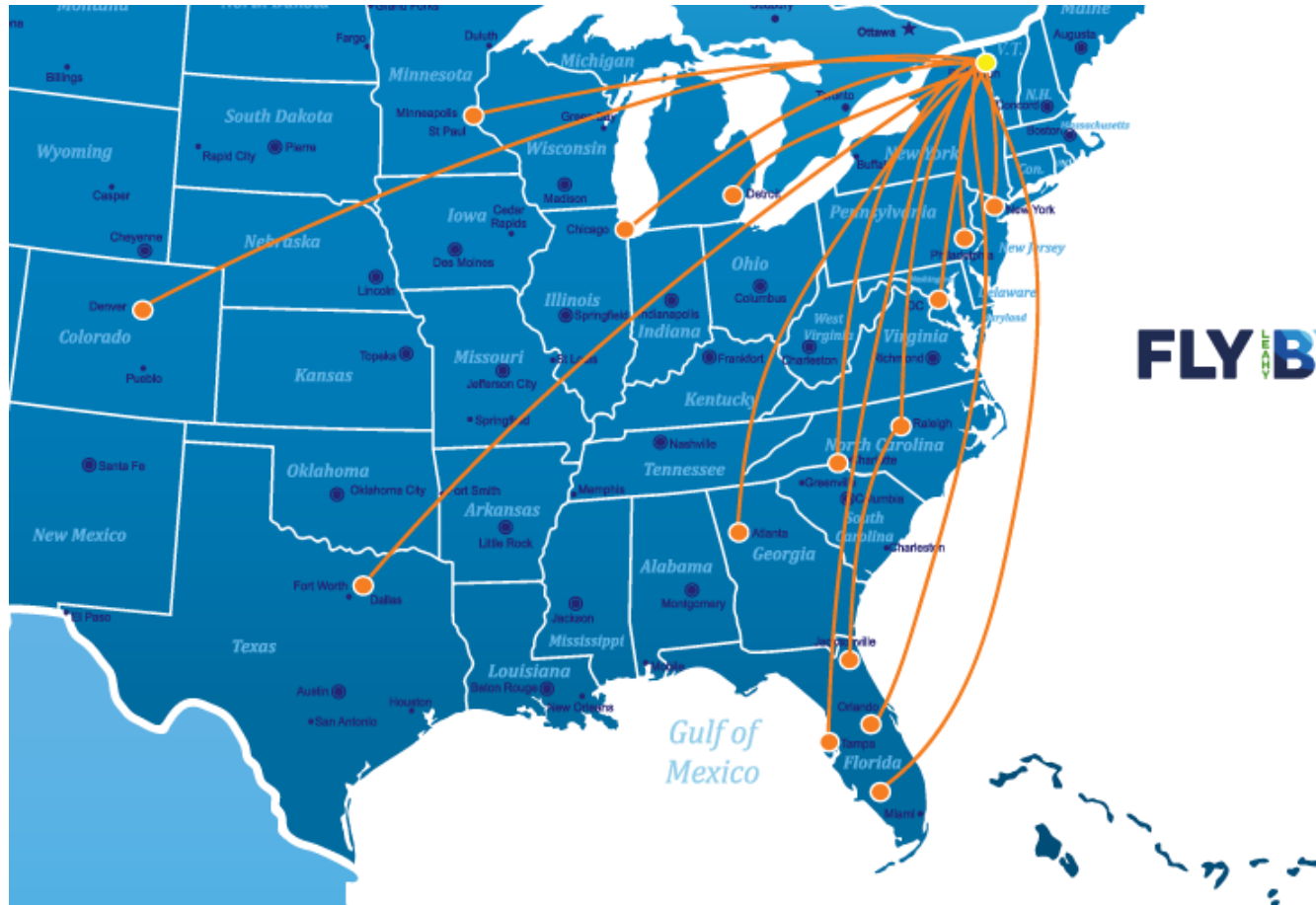
- We see 1.4 million passengers per year
- 2<sup>nd</sup> busiest airport in New England when looking at total operations
- One of the largest points of entry into Vermont
- Source of innovation (Beta) and curiosity (VFA)
- Vermont National Guard



## Our Airline Partners



# The most non-stop destinations dating back to 1990!



**FLY BTV**

- Atlanta (ATL) via [Delta](#)
- Charlotte (CLT) via [American Airlines](#)
- Chicago (ORD) via [United](#)
- Dallas (DFW)\* via [American Airlines](#)
- Detroit (DTW)\* via [Delta](#)
- Denver (DEN)\* via [United](#)
- Fort Myers (RSW) via [Breeze](#)
- Jacksonville (JAX)\* via [Breeze](#)
- Minneapolis - St. Paul (MSP)\* via [Sun Country Airlines](#) or [Delta](#)
- Newark (EWR) via [United](#)
- New York (JFK) via [Delta](#)
- New York (LGA) via [Delta](#) or [American Airlines](#)
- Orlando (MCO) via [Breeze](#) or [Frontier](#)
- Philadelphia (PHL) via [American Airlines](#)
- Raleigh-Durham (RDU) via [Breeze](#)
- Tampa (TPA) via [Breeze](#) or [Frontier](#)
- Washington DC (IAD) via [United](#)
- Washington DC (DCA) via [American Airlines](#)

\*Seasonal

# We are more than commercial services

## Our current airfield tenants include:

- Aerodyme
- Beta Technologies
- Burlington Technical College
  - FedEx
  - Heritage Aviation
  - NOAA
- Pratt & Whitney Canada
- University of Vermont Medical Center
  - Vermont Air National Guard
  - Vermont Army National Guard
  - Vermont Flight Academy



## Economic Impact\*



### Valuation

- The overall value of the Airport to the region is **\$1.04 billion**
- The annual economic activity generated by the airport is **\$481 million**
- The current asset value of the airport is **\$562 million**

### Jobs

- The airport supports **4,935 jobs** – only 50-60 are direct employees of Leahy BTV.
- The airport provides Vermonters with **\$170.3 million** in salaries annually

### Taxes

- The airport generates approximately **\$29 million** in state taxes and **\$6 million** in local taxes annually
- Estimated **\$2 million** in airport fuel revenue generated at Leahy that must be re-invested in an aviation program. Leahy BTV receives **\$500,000**

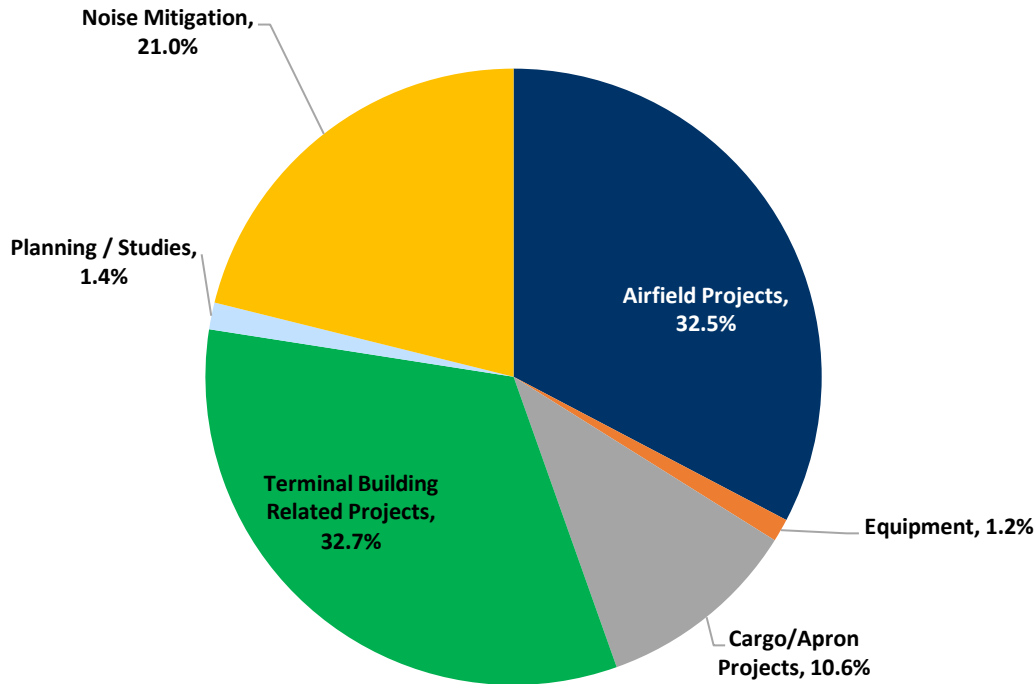
*\*2017 economic impact study.*



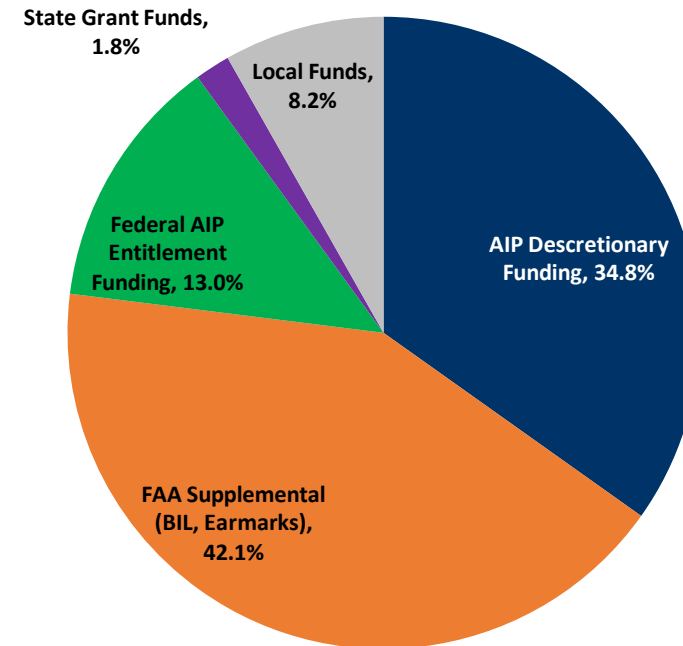
# Leahy BTV Capital Development Program Overview

- The Airport Capital Development Program for FY 2024 – 2028 has an estimated cost of \$137 million of which \$125 is expected to be funded by federal or state grants—Program funding sources do not include any additional bonds

**Capital Development Program Expenditures, FY2024-2028**



**Capital Development Program Funding Sources, FY2024-2028**



# Capital Development Program Projects and Funding Sources

## FY 2024-2028

(000's)	TOTAL
<b>Projects:</b>	
Airfield Projects	\$44,483
Cargo Apron Development	14,524
Terminal Building Related Projects	44,759
Planning/Studies	1,880
Noise Mitigation	29,720
<b>Total Project Cost</b>	<b>\$137,026</b>
<b>Funding Sources:</b>	
Federal AIP Entitlement Funding	\$17,600
AIP Discretionary	47,092
FAA Supplemental Funding	56,974
State Grant Funds (500K annually)	2,500 ←-1.8%
Local Funds *	11,200
<b>Total Funding Sources</b>	<b>\$137,026</b>

\*Local funding projected to be partially paid with PFCs

## 2024 was a busy year!

- Two new airlines (Breeze and Frontier) added 15 flights weekly to four destinations
- Meetings with over a dozen airlines
- Two major community events (Eclipse and Block Party)
- Dozens of guests including FAA Administrator, an Olympian, Senator Leahy, Senator Welch, and several community groups



# Challenges, opportunities, and industry changes

## Built for regional aircraft

### Additions 25 years ago were for regional aircraft

Four gates operating at one time with 150 passengers inbound and outbound at the same time.

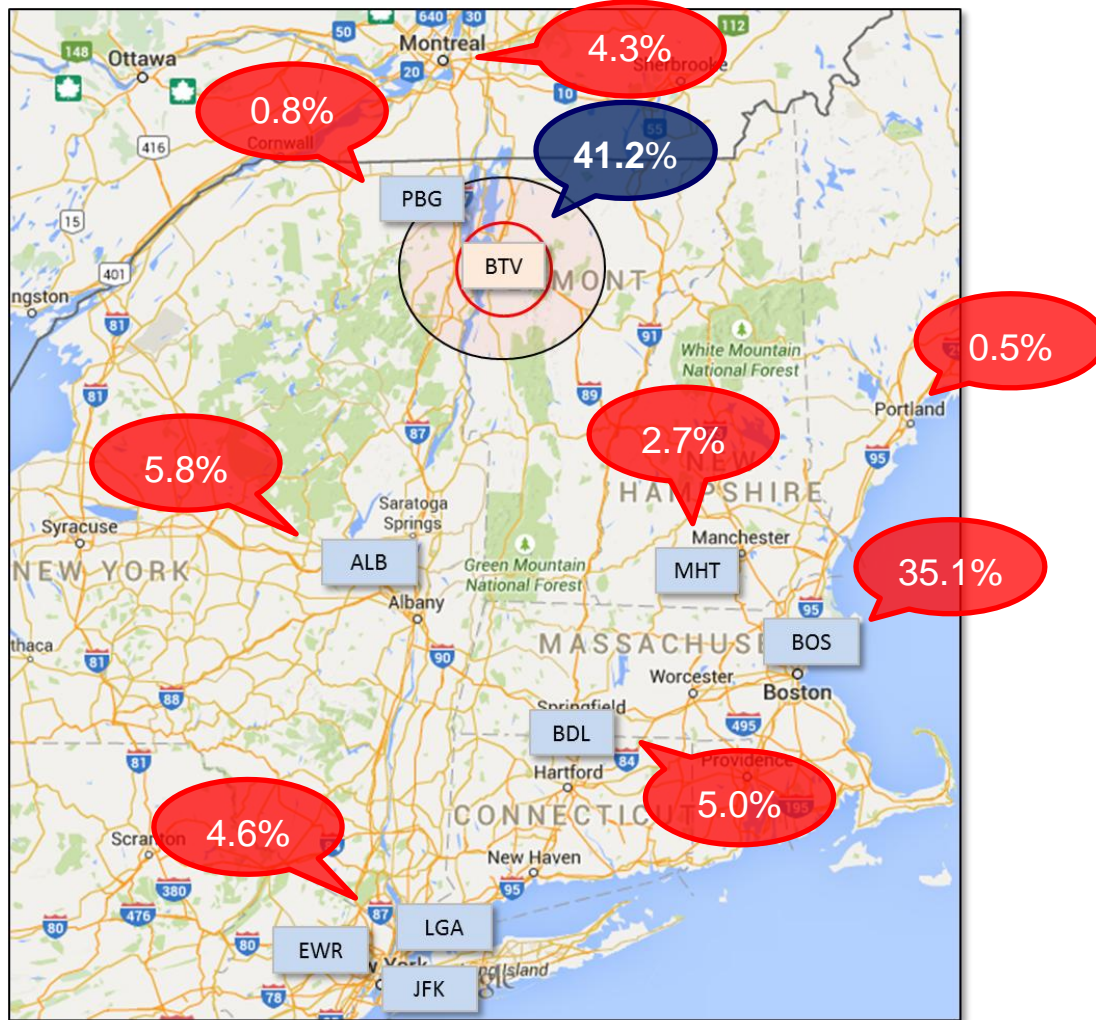
Original designed for 50 passengers per flight.

Industry demands more amenities (food, shopping, etc.)



### Burlington Catchment Area Traffic

Year-End Third Quarter 2023



## Leakage = opportunity to retake market

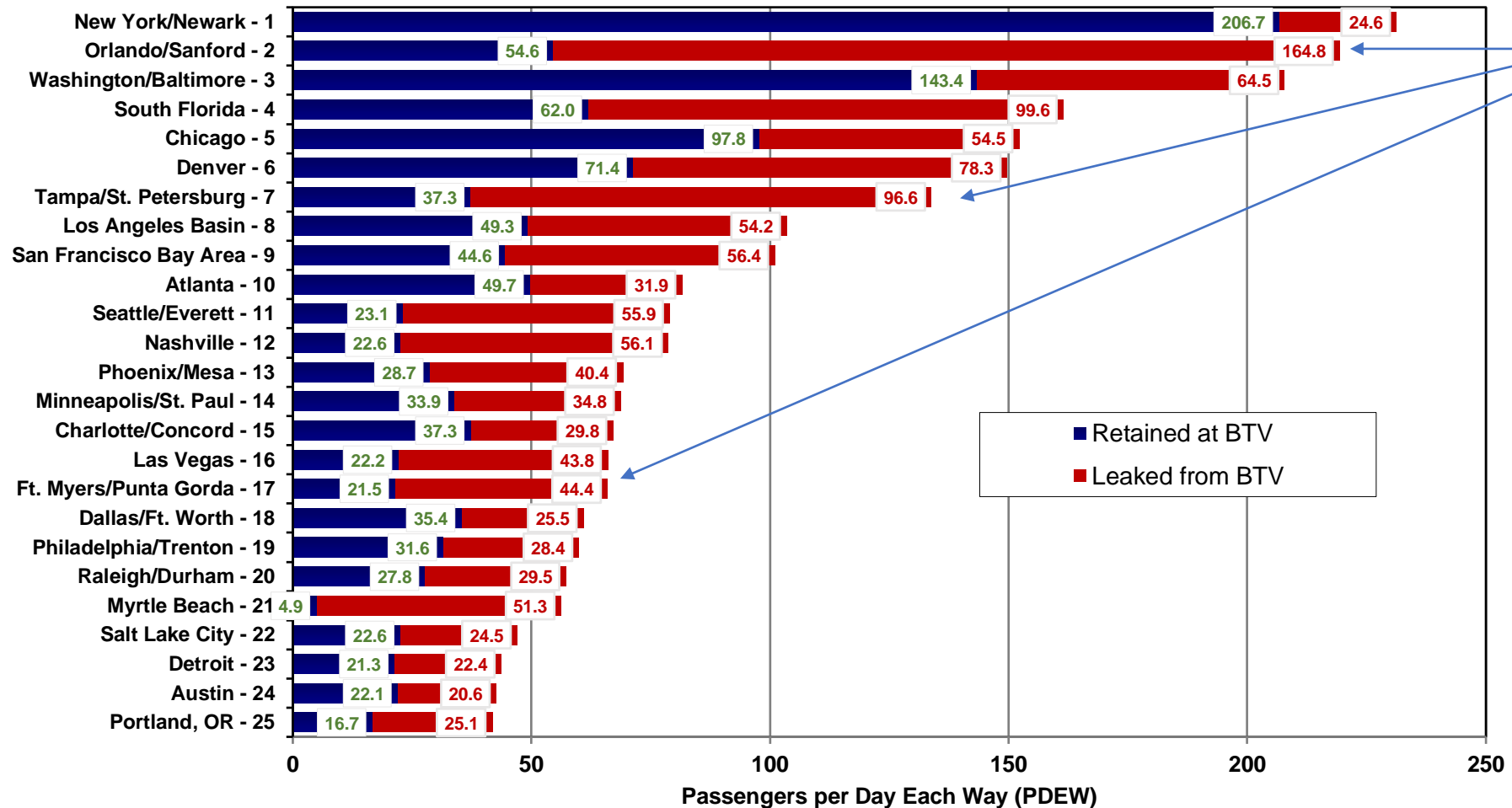
Leahy BTV to embark on campaign highlighting more options out of BTV.

Leahy BTV retained just 41.2% of the Traffic Generated in its catchment area in YE 3Q 2023; Boston captured 25.1% of the traffic.

Demand is there.

### Passengers per Day Each Way (PDEW) in the 25 Largest True Markets at Burlington

Year-End Third Quarter 2023



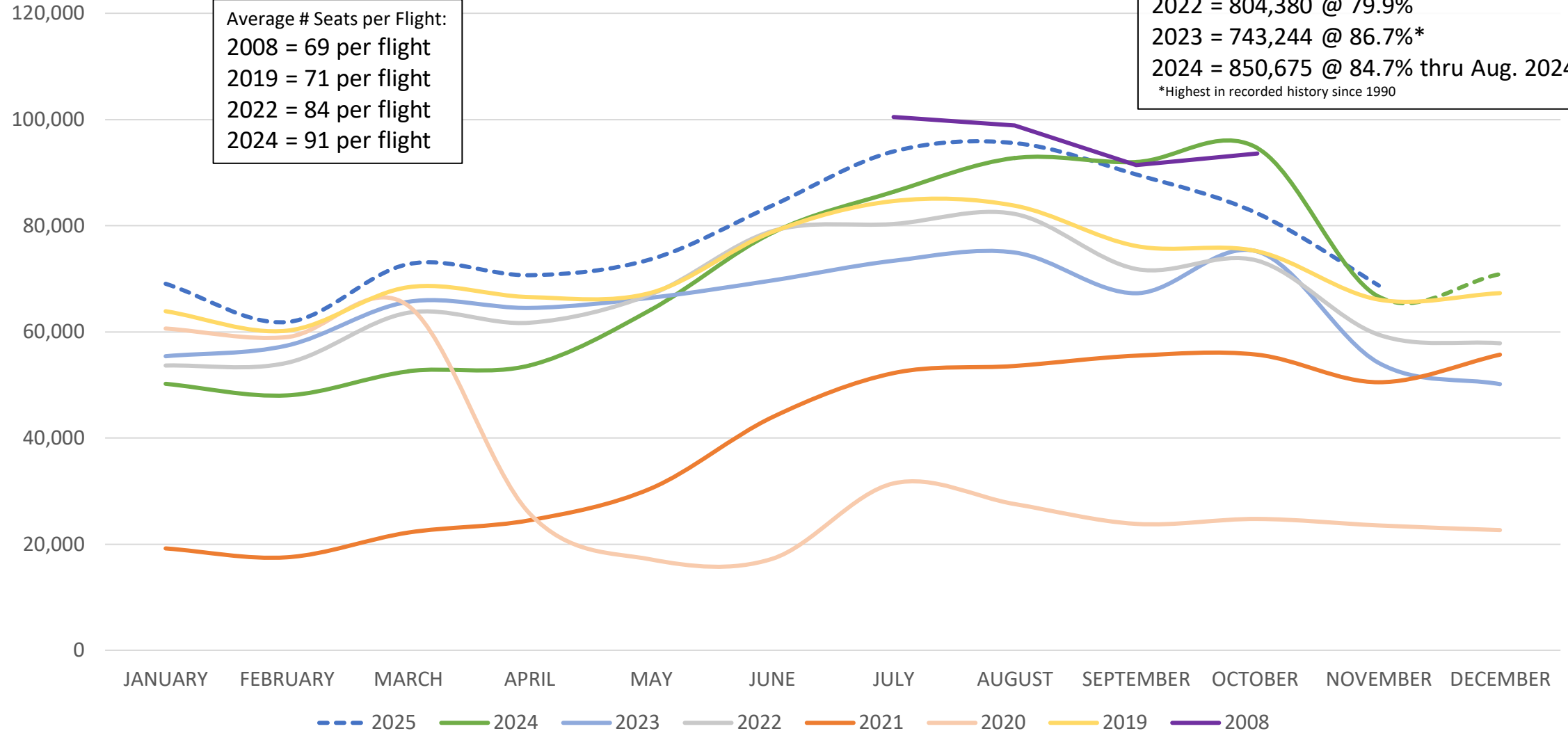
Pre-Breeze  
and  
Frontier

■ Retained at BTV  
■ Leaked from BTV

# Scheduled Seats; Past and Projections

Total Annual Seats and Load Factor:  
 2008 = 1,051,115 @ 74.6%  
 2019 = 858,589 @ 82.7%  
 2022 = 804,380 @ 79.9%  
 2023 = 743,244 @ 86.7%\*  
 2024 = 850,675 @ 84.7% thru Aug. 2024  
 \*Highest in recorded history since 1990

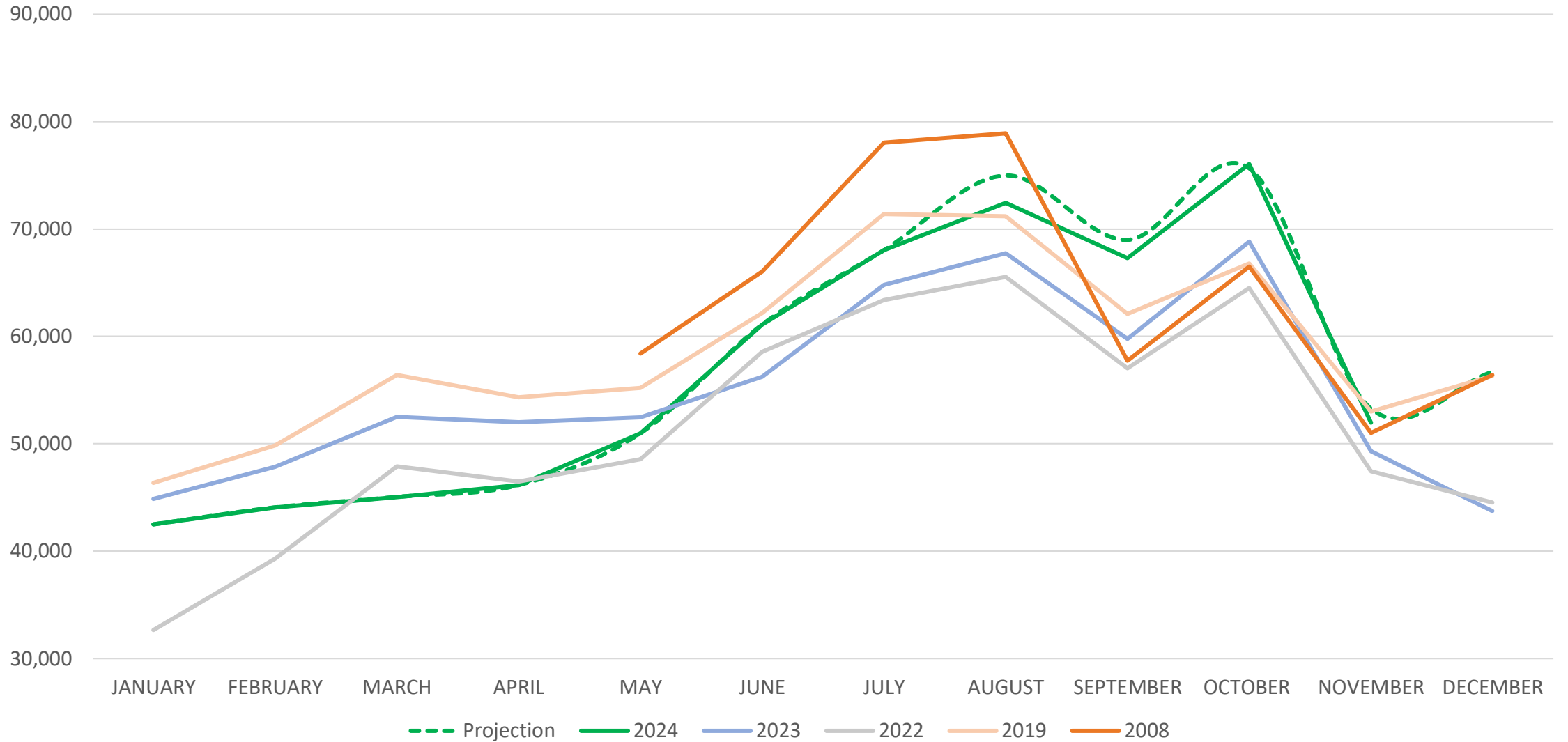
Average # Seats per Flight:  
 2008 = 69 per flight  
 2019 = 71 per flight  
 2022 = 84 per flight  
 2024 = 91 per flight



2025 projections have us near 2008 results and surpass 2019 results.



# Passenger Statistics



# Project NexT

# Congressionally Directed Spending Awards

BTV Project NexT \$34 Million

South Terminal Design work \$4.0 Million

New General Aviation Ramp: \$5 Million

New Jet Bridge \$2 Million

**\$45 Million**

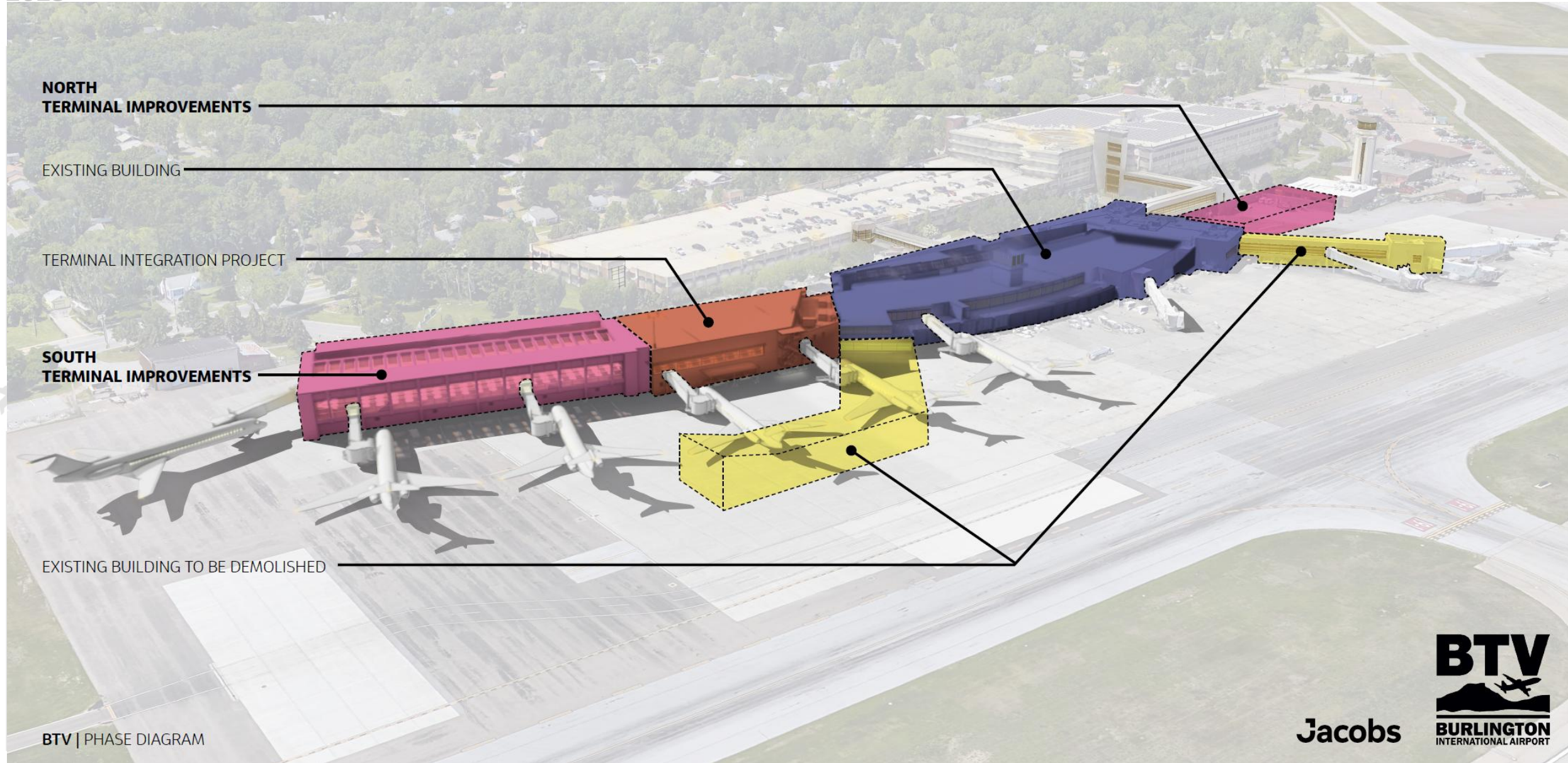


## Project NexT's Sustainable Focus

- Implementation of geothermal field for heating and cooling
- Employment of a mass timber framing structure and maple ceilings will reduce carbon footprint of the construction
- A Photovoltaic-ready area is a focal part of the third-floor design along with gardens and a patio viewing area available to the public







BTV | PHASE DIAGRAM

Jacobs





# SUSTAINABILITY





**airport  
carbon  
accreditation level 1**

# GLOBAL EFFORT TO MITIGATE AIRPORT CARBON EMISSIONS

## Airport Carbon Accreditation

- A significant milestone in the airport's ongoing commitment to sustainability. By joining over 600 ACA-accredited airports worldwide, Leahy BTV has taken an important step toward creating a more environmentally responsible future.
- Leahy BTV is the second airport in New England to earn this accreditation
- As a Top 5 Small Airport in the U.S., Leahy BTV is proud to not only offer efficient and convenient travel experiences but a place where sustainability and environmental stewardship are a top priority.



# Leahy BTV's Electric Vehicle Fleet is Growing!

The Airport has 3 Ford Lightning trucks, 1 Mach-E Mustang and an Electric Sweeper









## What's next?

### Legislative Tours

Thursday, March 6<sup>th</sup> and Friday March 7<sup>th</sup> from 10:00 AM – 2:00 PM

Tour includes stops at:

- Patrick Leahy Burlington International Airport Terminal
- Airfield maintenance operations
- Heritage Aviation
- Pratt & Whitney
- Burlington Technical School
- Vermont Flight Academy
- Beta Technologies
- Airport Rescue and Fire

*Lunch included*

RSVP to [jbartley@btv.aero](mailto:jbartley@btv.aero)