

Program Overview

The Downtown Transportation Fund is a financing tool which assists municipalities in paying for transportation-related capital improvements within or serving a Designated Downtown and eligible Designated Village Centers. Investment in the infrastructure of public spaces stimulates private investment and creates a sense of identity and pride in Downtowns and Village Centers across Vermont.

In 2024, over \$1.7 million was awarded to 11 Designated Downtowns and Village Centers. Projects include streetscape enhancements, bicycle and pedestrian safety improvements, ADA and accessibility improvements, and lighting projects. Since its inception in 1999, the program has invested over \$15.7 million to support 169 projects in 38 different communities, leveraging over \$56 million in additional funding.

FY24 Grant Recipients


- Bellows Falls
- Bennington
- Brattleboro
- Brighton
- Chester
- Danville
- Springfield
- St. Johnsbury
- Vergennes
- Williston
- Windsor

By the Numbers [2020-2024]

 **47** projects awarded

 **30** communities served

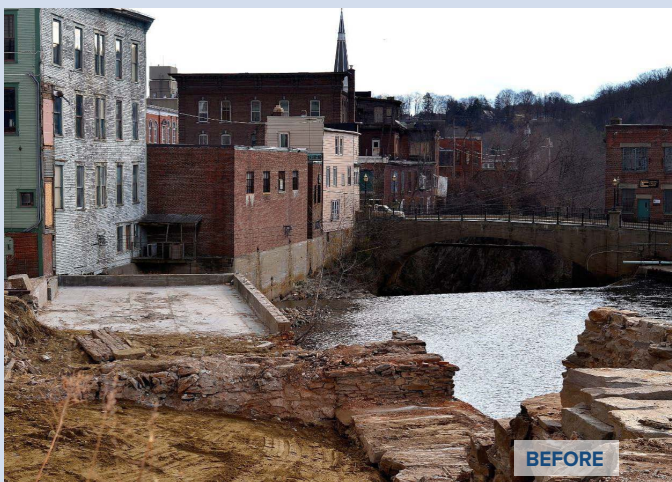
 **\$5.9 m** in downtown transportation grants awarded

 **\$4.7 m** leveraged with downtown transportation funds

Downtown Transportation Funds Help Spark Revitalization Efforts in Springfield

Springfield's planning efforts highlight how a downtown center aligned community goals with the Better Connections Program and used the Downtown Transportation Fund to implement recommendations to expand Comtu Cascades Park along the Black River. The park's location is crucial, with nearby businesses including a movie theater, coffee shop, restaurants and the Springfield Food Coop. In a post-COVID world, such multi-use spaces are essential for strengthening community connections.

In 2017, Springfield's Master Plan called for demolishing two dilapidated riverside buildings next to the Comtu Cascades Park, including the former Cobb-Derby grist mill and the Bakery Building. The town moved forward with demolition and applied for two Downtown Transportation Fund grants totaling \$170,000 to stabilize the site, add handrails, plant trees and landscaping features, install a concrete path, lighting, and locally crafted benches. The town then secured a Better Places pilot grant to activate the park with a summer series of concerts, "Concerts at the Comtu," featuring dance, music, and theater which has become a popular gathering space for the community.



For more information, please contact:
Natalie Elvidge: Natalie.Elvidge@vermont.gov
802.461.2444