

Downtown Transportation Fund



Natalie Elvidge and Gary Holloway
Vermont Department of Housing and Community Development

House Transportation
February 19, 2025

Downtown Designation Program

24 designated downtowns

This community revitalization program is designed **to preserve the character** and **enhance the future** of medium to large sized historic centers by **incentivizing public and private investments, improving quality of life and encouraging economic development.** Municipalities that receive designation collaborate with local non-profit downtown organizations supporting efforts through funding, staff, partnerships and volunteers.



Eligible Designated Village Centers

(who completed the Better Connections Program)

- Bethel
- Brighton
- Chester
- Danville
- Enosburg
- Fairlee
- Hyde Park
- Lyndon
- Moretown
- Northfield
- Poultney
- St. Albans Town
- Waitsfield
- Warren
- West Rutland

*2 more designated village centers will be eligible in 2026 after completing the Better Connections Program.

Eligible Designated Village Centers

(in Chittenden County with comparable planning)

Chittenden County Designated Areas are not eligible for Better Connections funding, but these Designated Village Centers have **completed a comparable comprehensive planning process**:

- Essex Junction
- Hinesburg
- Jericho Riverside
- Westford
- Underhill Flats

Downtown Transportation Fund



Burlington



Bristol

Common Project Examples

- Bicycle & pedestrian enhancements (*ex: sidewalks and crosswalks*)
- ADA modifications
- Streetscape improvements
- Parking facilities
- Rail or bus facilities
- Utility relocation
- Wayfinding signage
- Lighting improvements
- Safety improvements



Downtown Transportation Fund

Grant Maximum: \$200,000

Required Match: 20% match (in-kind is allowable)

Due: Applications due February, awarded in April

Timeline: 24 months to start the project, 36 months to complete



Downtown Transportation Fund

Recent Cycles

- \$523,966 (annual appropriation)
- There was a one time \$5M allocation in 2021 that expanded eligibility to include eligible Designated Village Centers

Year	Amount	Communities Awarded
2022	\$2,098,094	15
2023	\$1,154,436	8
2024	\$1,715,585	11



2025 Grant Applicants

Year	Amount Requested	Villages	Downtowns
2025	\$2,395,333.04	7	7

- Hinesburg
- Bethel
- Hardwick
- W. Rutland
- Moretown
- Burlington
- Montpelier
- Essex Junction
- Lyndon
- Waterbury
- Brattleboro
- Wilmington
- Northfield
- Vergennes

By the Numbers



By the Numbers [2020-2024]



47

projects awarded



30

communities
served



\$5.9 m

in downtown
transportation
grants awarded



\$4.7 m

leveraged with
downtown
transportation
funds

Downtown Transportation Fund



St. Albans

Downtown Transportation Fund



Bristol

Downtown Transportation Fund



Brattleboro

Downtown Transportation Fund



Poultney

Slate Quarry Park

Downtown Transportation Fund

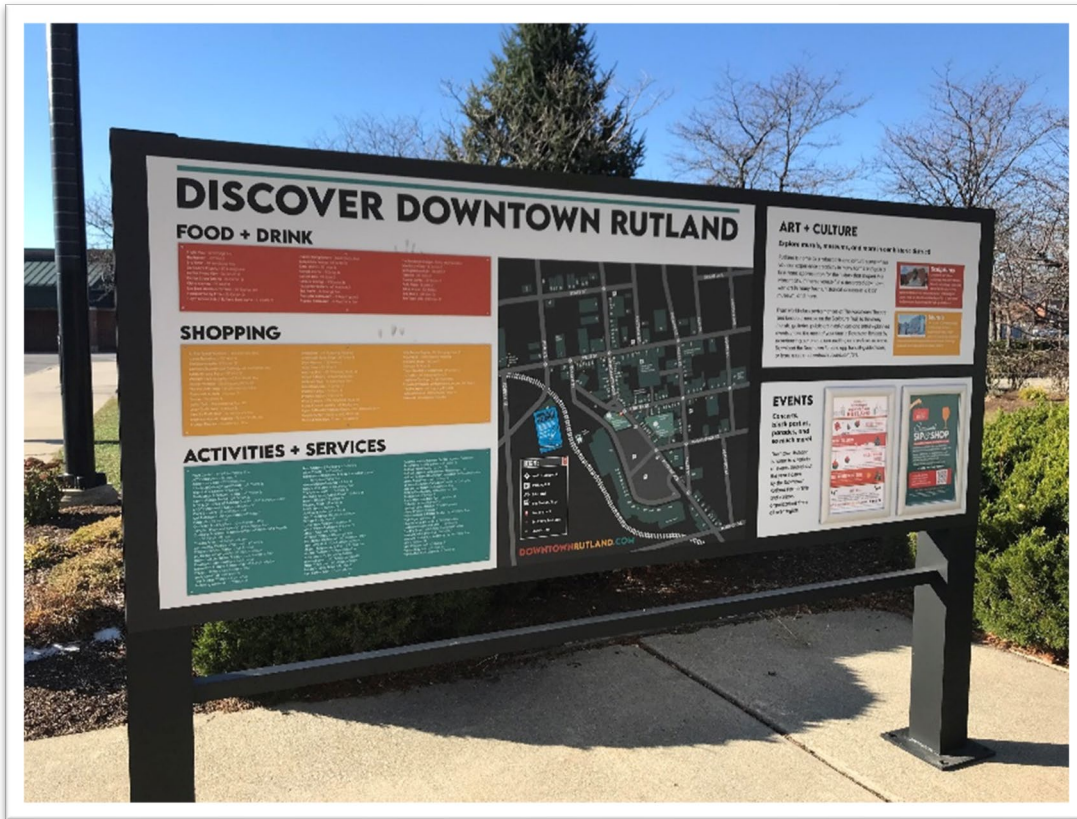


Springfield Comtu Falls Park (Before)

Downtown Transportation Fund

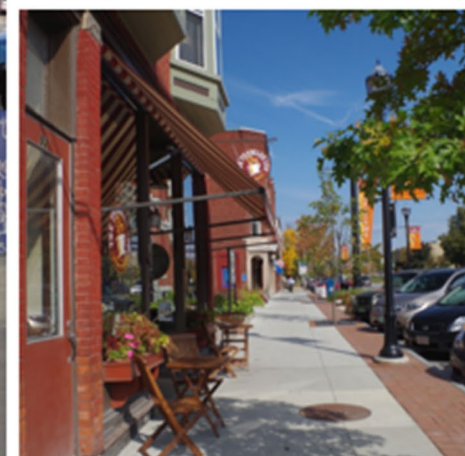


Downtown Transportation Fund



Rutland

Supporting Safe and Vibrant Downtowns and Villages





Thank You.

.....
Natalie Elvidge and Gary Holloway