

House Transportation
Committee

January 22, 2025

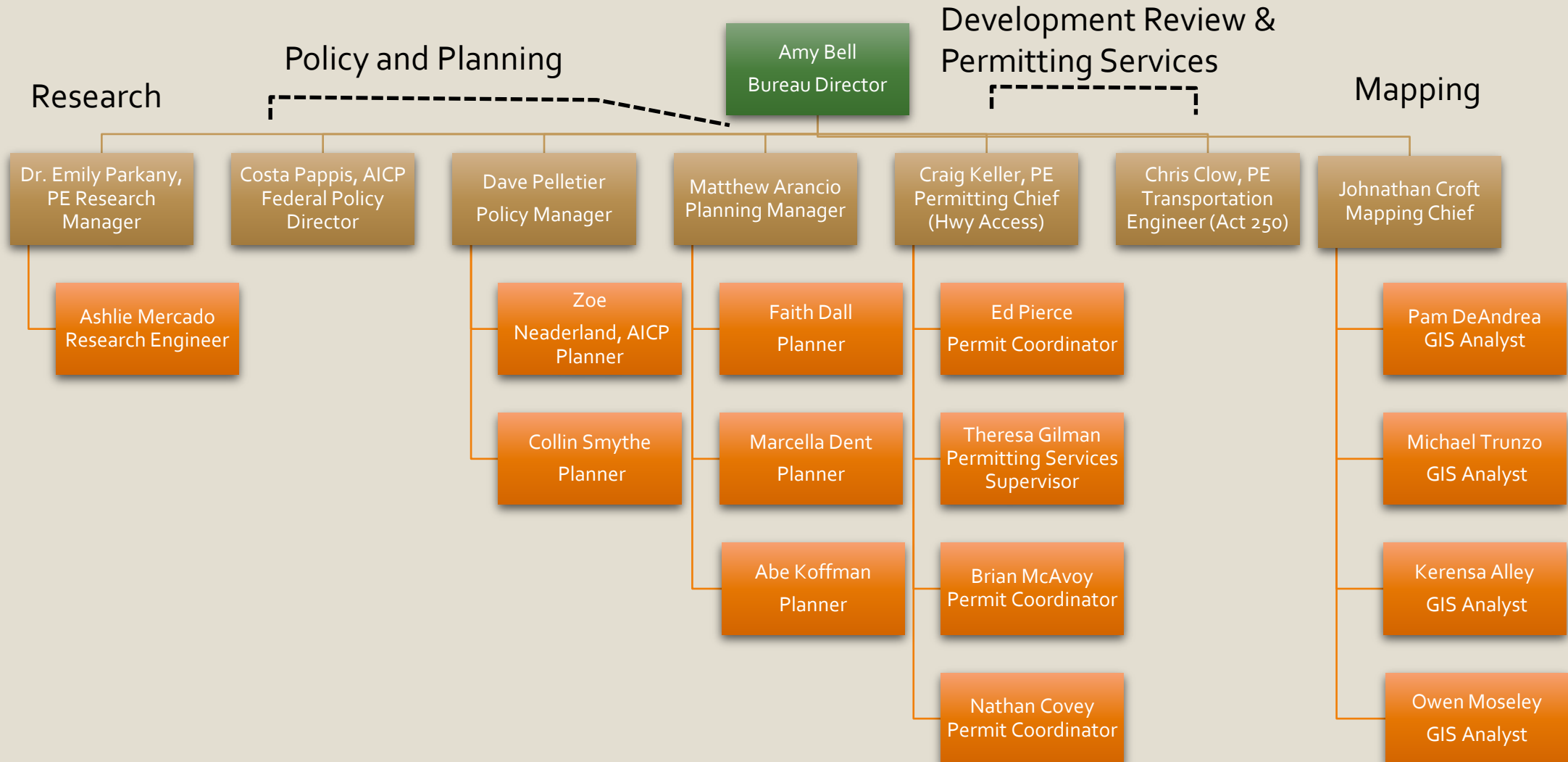
Amy H. Bell

Policy, Planning &
Research Bureau Director

POLICY, PLANNING AND RESEARCH BUREAU OVERVIEW



POLICY, PLANNING & RESEARCH BUREAU



SECTION ACTIVITIES



Policy & Planning

Reauthorization of Federal Funding (mandatory planning requirements, rulemaking, support for all Programs)

Federal bill review monitoring and analysis

Executive staff support

Legislative monitoring, bill review management

Agency Strategic Plan

Cross-border initiatives and international agreements

Participation in AASHTO, NASTO and NGA policy development

Better Connections Grant Program

Long Range Transportation Plan

Modal Plans (Rail Plan, Freight Plan, Aviation Plan, Transit Plan, Bike-Ped Plan)

Federal Discretionary Grant Applications



Transportation Planning Initiative & MPO Coordination

11 Regional Planning Commissions and the Chittenden County RPC/MPO

Cooperation and coordination between VTrans, RPCs and Municipalities

Regional input to project prioritization

Local transportation planning and technical assistance

Road, bridge and culvert inventories, Municipal Roads General Permit support

SECTION ACTIVITIES



Mapping Section

Town Highway Maps and Mileage Certifications

Federal Highway and National Highway System Data Management and Classification

Cartography and GIS Spatial Analysis Services

Town highway additions, reclassification and discontinuance review



Research Section

Federally mandated research program

Four research projects completed this year, seven active projects

Technical Transfer through Hybrid VTrans Research Symposium with new booklet

TRB, NCHRP participation and FHWA Pooled Funds; leading new Northeast Research Peer Exchange Consortium



Development Review & Permitting Services

Permits to Work in State Highway Right-of-Way (Section 1111 Permit)

Act 250 Application Review

Act 145 (2014) Transportation Impact Fee management

Sec. 1111 Automation Project

2024/25 POLICY & PLANNING ACCOMPLISHMENTS

- **230** municipalities actively engaged in regional and statewide Transportation Planning Initiative (TPI)
- **Three** Better Connections municipal studies ongoing: Brattleboro, W. Windsor & E. Hardwick.
- Solicitation for next round of Better Connection projects ongoing.
- Completed **3** Legislative Studies: Transportation Funding, DMV Excessive Motor Vehicle Noise Report and Act 181 Transportation Support Study (ongoing).
- Processed 511 permits for driveways, utilities, and other work in highway right-of-way
- Reviewed **245** Act 250 applications; provided **41** comment letters; **14** Act 145 Fees assessed
- Processed the 2024 mileage certificates and published **69** updated town highway maps
- Continued to manage the Vergennes Planning and Environmental Linkages Study to identify alternate routes for trucks on VT 22A
- **4** research projects completed; **seven** active projects



- Program Manager: Amy Bell
- SFY 2026 Staff: 22 FTE and 1 Temporary
- State Funds: \$3,137,901
- Federal Funds: \$10,797,449
- Interdepartmental Transfer: \$116,503

SECTION STAFF CONTACTS

Contact	Topics
<p>Amy Bell Policy, Planning and Research Bureau Director 802-279-0783 Amy.Bell@vermont.gov</p>	<ul style="list-style-type: none"> Bureau Management Automated Vehicles Legislative Studies
<p>Dave Pelletier Policy Manager 802-595-9675 Dave.Pelletier@vermont.gov</p>	<ul style="list-style-type: none"> Statewide Transportation Planning Modal Plans National & International Policy Coordination Statewide Travel Demand Model
<p>Matthew Arancio Planning Manager 802-793-7489 Matthew.Arancio@vermont.gov</p>	<ul style="list-style-type: none"> Transportation Planning Initiative Chittenden County RPC and Metropolitan Planning Organization Better Connections Program Corridor Planning
<p>Costa Pappis, CPM, AICP CTP Federal Programs Manager 802-793-5049 costa.pppis@vermont.gov</p>	<ul style="list-style-type: none"> Federal Grants IJJA Rule Making Monitoring and Implementation Legislative Coordination
<p>Johnathan Croft Mapping Section Chief 802-828-2600 johnathan.croft@vermont.gov</p>	<ul style="list-style-type: none"> Town highway maps and mileage certification Roadway re-classification GIS for Transportation
<p>Craig S. Keller, P.E. Chief of Permitting Services 802-279-1152 craig.keller@vermont.gov</p>	<ul style="list-style-type: none"> Permits to Work in State ROW (Section 1111 Permit)
<p>Christopher Clow, P.E. Transportation Engineer 802-522-4901 christopher.clow@vermont.gov</p>	<ul style="list-style-type: none"> Act 250 Traffic Impact Study Review Act 145 Transportation Impact Fees
<p>Dr. Emily Parkany, P.E. Research Manager 802-272-6862 emily.parkany@vermont.gov</p>	<ul style="list-style-type: none"> Agency research projects Research Project Management Northeast and US National Research Programs

QUESTIONS?

Amy H. Bell

Policy, Planning and Research Bureau Director

802-279-0783

Amy.Bell@vermont.gov