

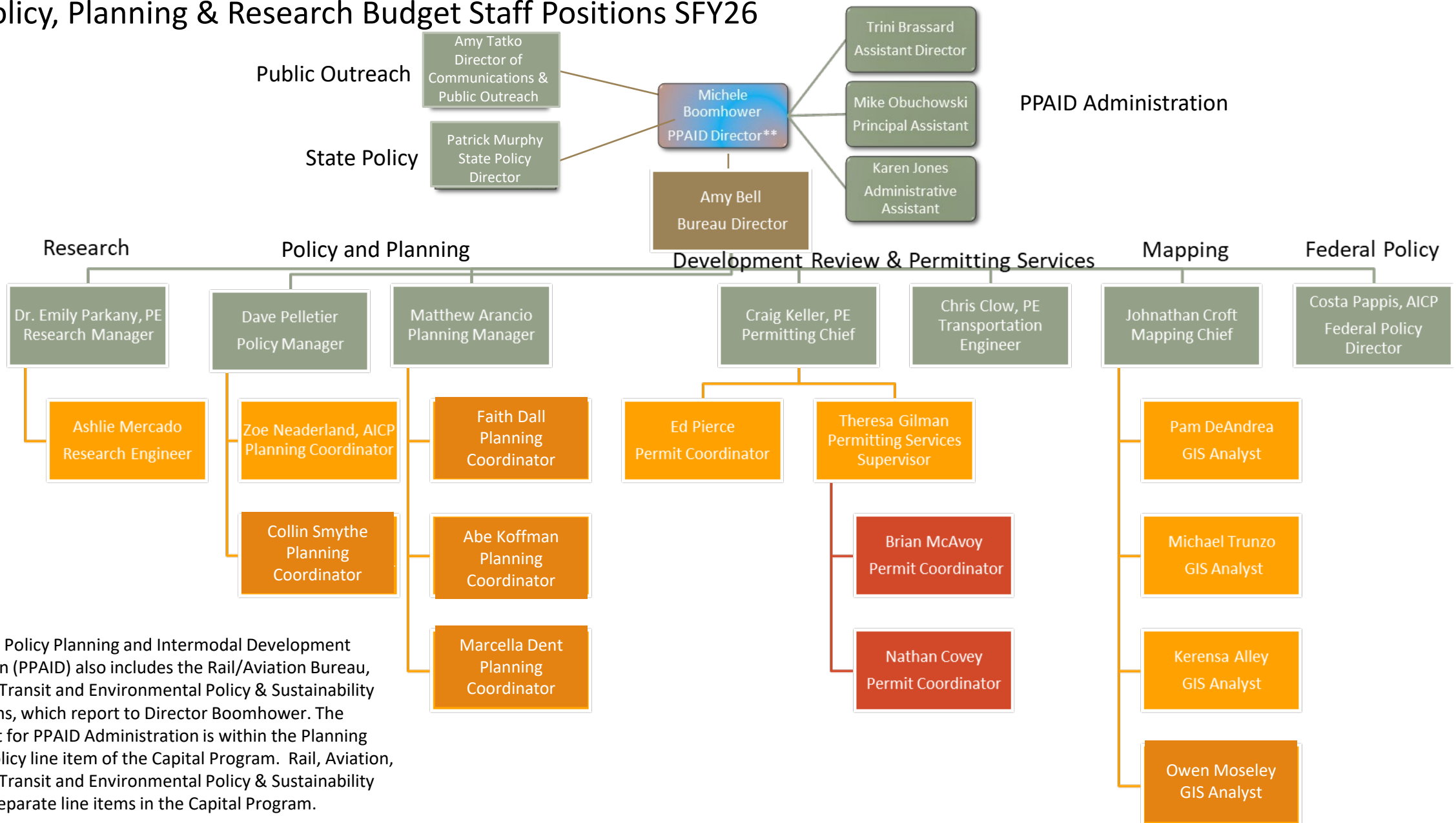
AOT Policy, Planning & Research Bureau SFY 2026 Budget

February 2025

AMY BELL

POLICY PLANNING AND RESEARCH BUREAU DIRECTOR

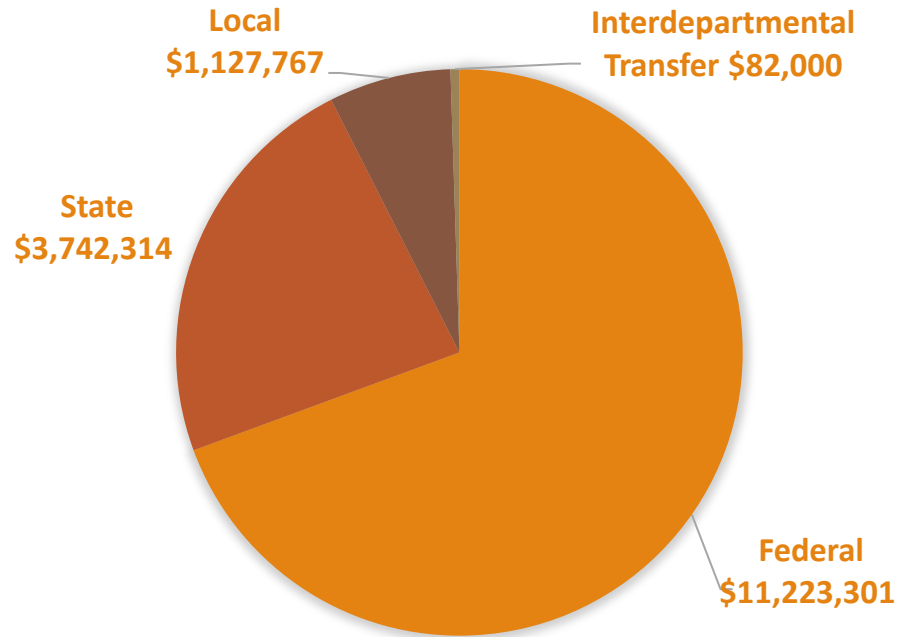
Policy, Planning & Research Budget Staff Positions SFY26



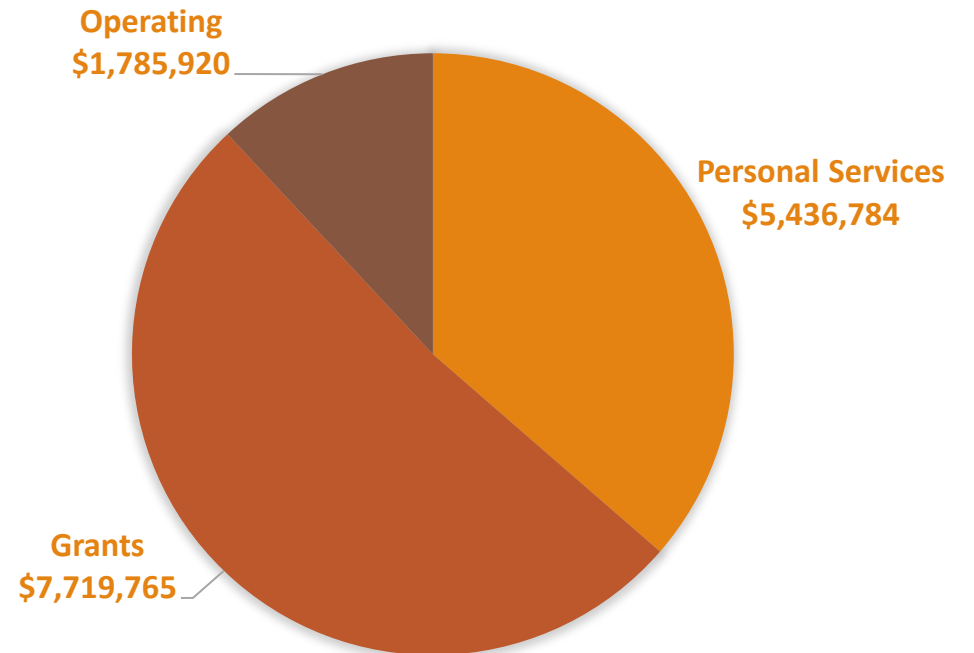
** The Policy Planning and Intermodal Development Division (PPAID) also includes the Rail/Aviation Bureau, Public Transit and Environmental Policy & Sustainability Sections, which report to Director Boomhower. The budget for PPAID Administration is within the Planning and Policy line item of the Capital Program. Rail, Aviation, Public Transit and Environmental Policy & Sustainability have separate line items in the Capital Program.

Budget Breakdown: \$15.04M

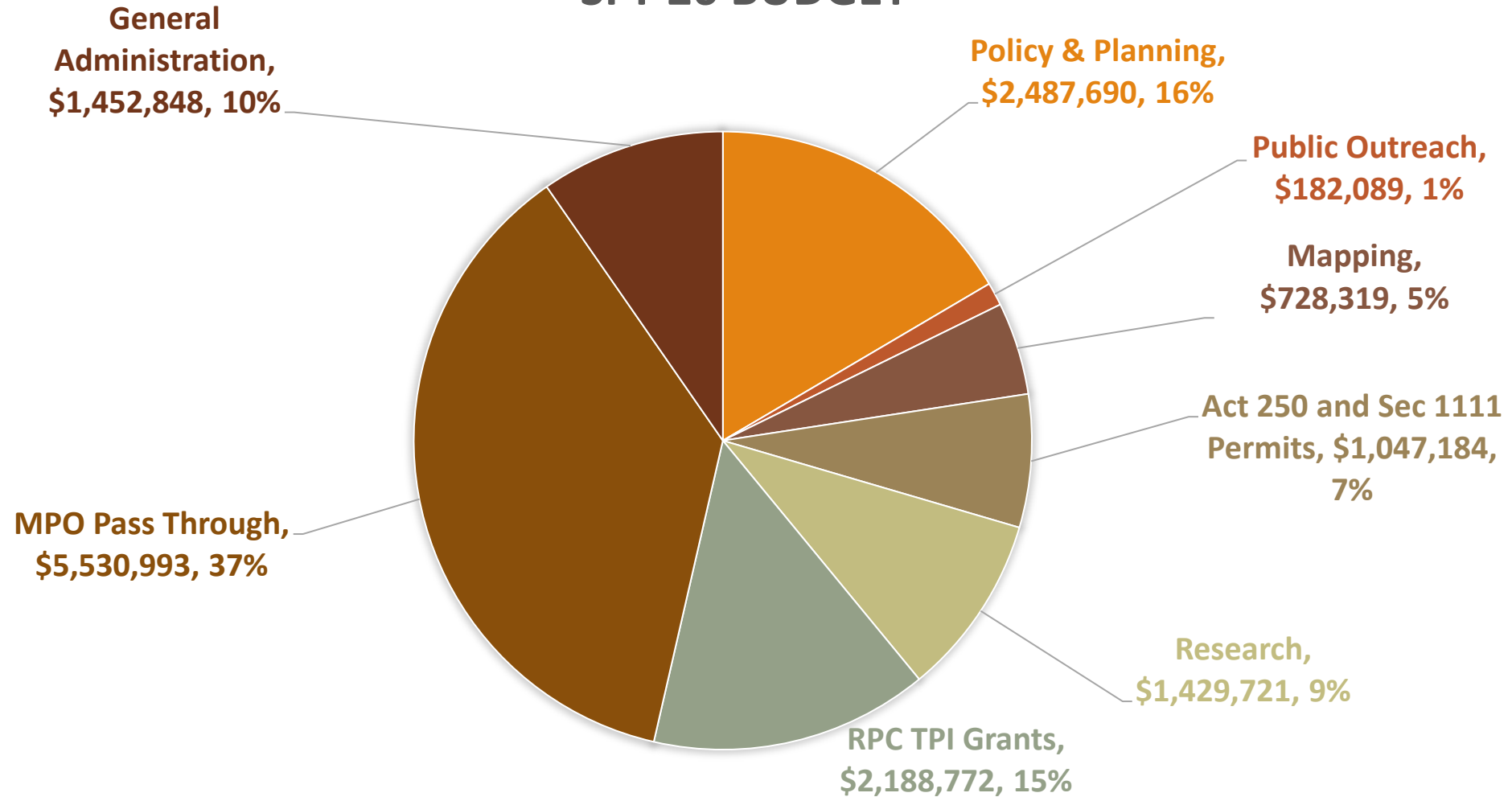
SFY26 FUNDING PROFILE



SFY26 SPENDING PROFILE



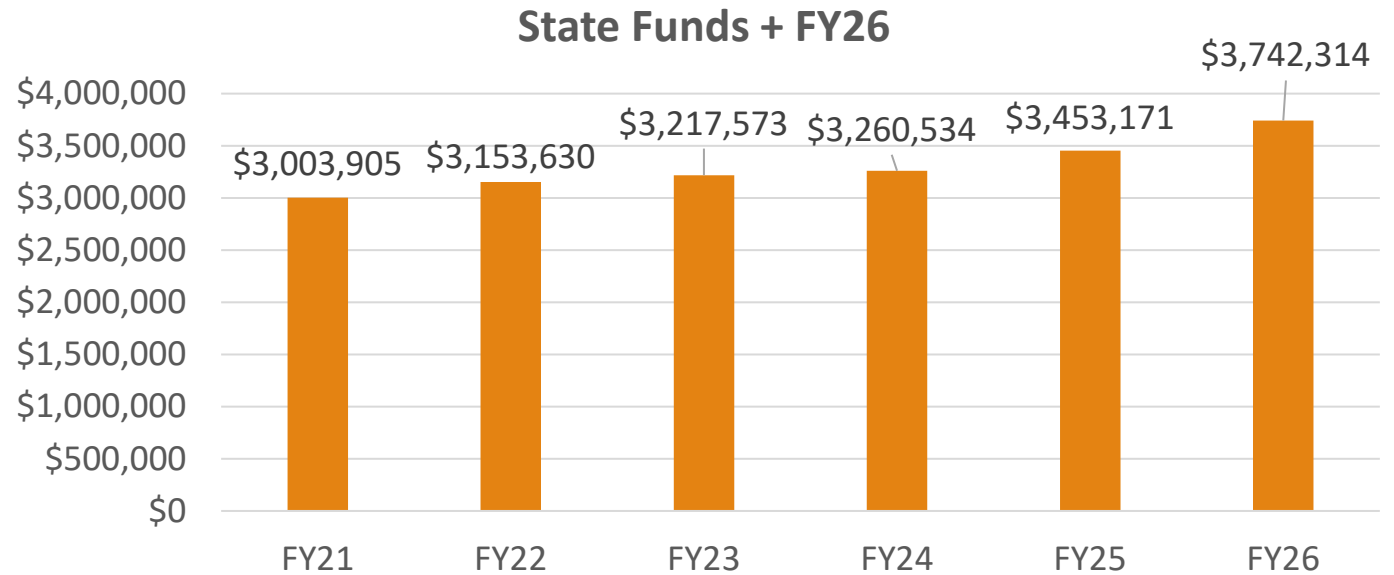
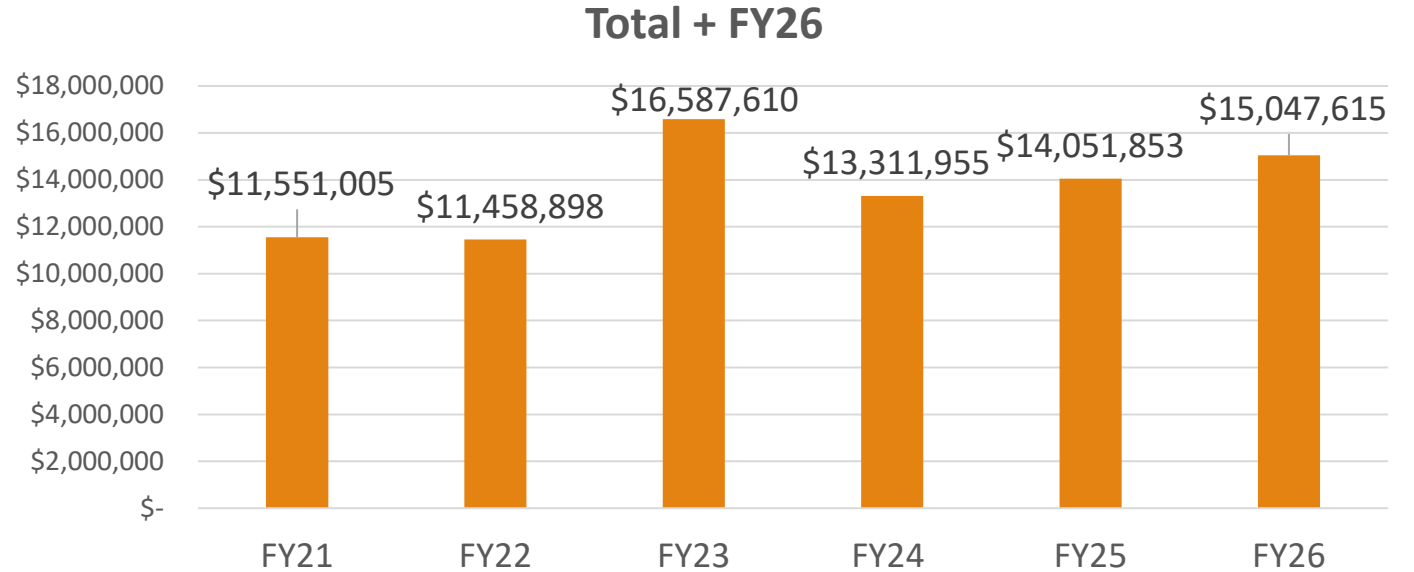
POLICY & PLANNING BREAKOUT BY SECTION SFY 26 BUDGET



SFY26 Breakdown by Section

| Section | SFY25 | SFY26 Proposed | Change SFY25-26 |
|------------------------------|---------------------|---------------------|------------------|
| Policy & Planning | \$2,514,761 | \$2,487,690 | -\$27,071 |
| Public Outreach | \$261,792 | \$182,089 | -\$79,703 |
| Mapping | \$681,088 | \$728,319 | \$47,231 |
| Act 250 and Sec 1111 Permits | \$1,075,936 | \$1,047,184 | -\$28,752 |
| Research | \$1,433,439 | \$1,429,721 | -\$3,718 |
| RPC TPI Grants | \$2,188,773 | \$2,188,772 | -\$1 |
| MPO Pass Through | \$4,983,768 | \$5,530,993 | \$547,225 |
| General Administration | \$912,296 | \$1,452,848 | \$540,552 |
| Total | \$14,051,853 | \$15,047,615 | \$995,763 |

Policy, Planning & Research Budget: 5-Yr Historical + SFY26



Questions?

Amy Bell

Bureau Director

Policy, Planning & Research Bureau

Amy.Bell@vermont.gov

(802) 279-0783