



Assessment of Recovery Residences 2025

Report to the Legislature

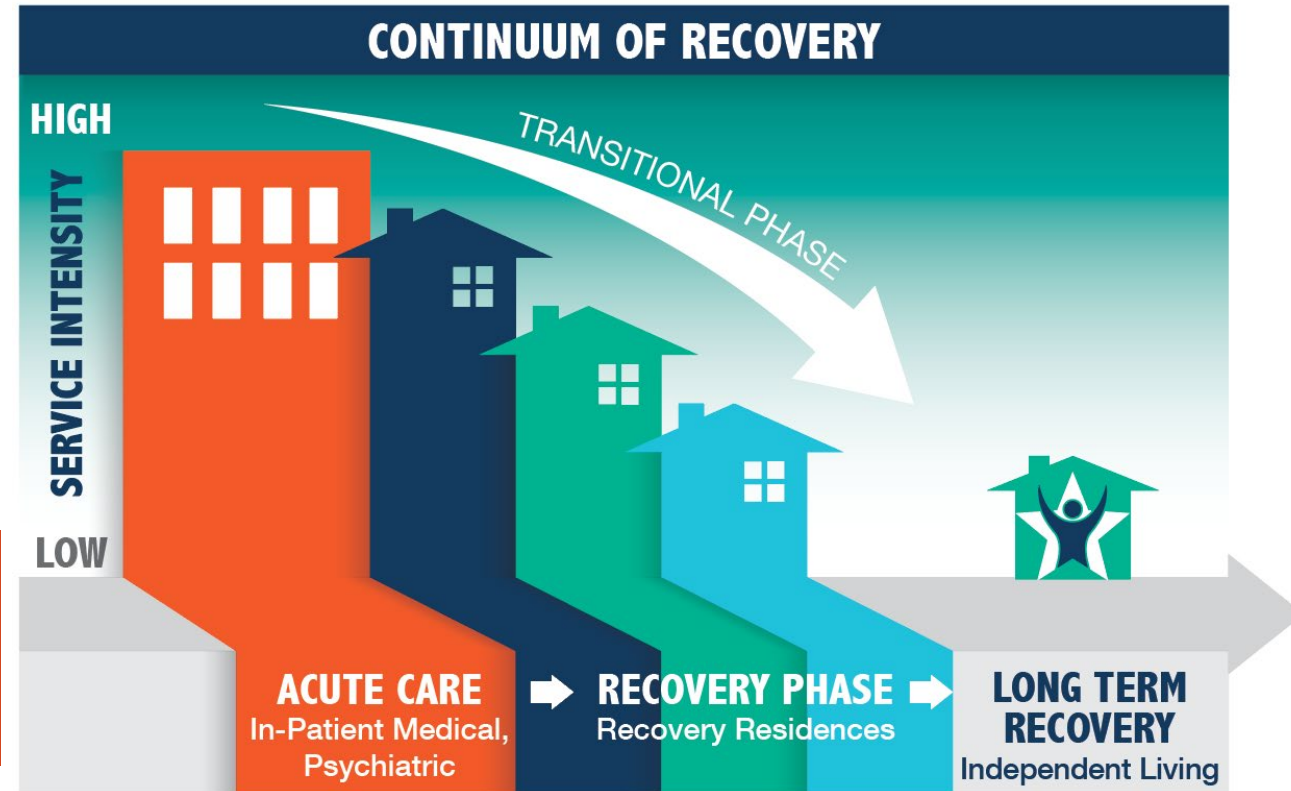
**Vermont Department of Health
Division Director Emily Trutor**

January 7, 2026

Substance Use Continuum

Vermont is a leader in prevention, treatment and recovery for substance use disorder. However, we must continue to adapt to the changing landscape. That means:

- Responding to an increase in stimulant use/harm
- Ensuring recovery housing is prioritized as part of the bigger picture of housing needs in Vermont.
- Focusing on critical prevention work.



Source: [West Virginia Alliance of Recovery Residences](#)

Recovery Residences - Timeline

Key

Policy

Program

Data

Oxford House, the first recovery residence program, opens (late 80s/early 90s)

1990

2000

Legislature began providing funding for community-based recovery member organizations (2001)

Legislature created and funded the Vermont Recovery Network (2006)

2010

National Alliance for Recovery Residences (NARR) founded (2011)

Vermont Alliance for Recovery Residences (VTARR) founded (2016)

Vermont named a NARR affiliate (2017)

2020

Phoenix House closes resulting in a loss of 58 beds (2021)

Act 163 requires recovery residence certification recommendation, the systemic assessment of recovery residence, and creates temporary landlord tenant law exclusion (2024)

2025

Inventoried 145 beds and 404 community recovery resources (2025)

2030

Longer term goals include:

- 250 additional beds (~400 beds statewide) across the NARR continuum
- Coverage in every county
- Supports for specific populations (e.g., justice-involved)
- Continue to reduce barriers e.g. transportation, stigma
- Ongoing monitoring and quality improvement using data

Recovery Residences - Assessment

In Accordance with Act 163, Section 2, Assessment, Growth, and Evaluation of Recovery Residences

[Assessment of Recovery Residences 2025 Report to the Legislature](#)

The Department of Health shall complete an assessment of certified and noncertified recovery residences in the State, which shall:

- 1) Create a comprehensive inventory of all recovery residences in Vermont, including assessments of proximity to employment, recovery, and other community resources;
- 2) Assess the current capacity, knowledge, and ability of recovery residences to inform data collection and improve outcomes for residents;
- 3) Assess recovery residences' potential for future data collection capacity; and
- 4) Assess the types of data systems currently in use in Vermont's recovery residences and define the minimum core components of a data system.



2025 Report to the Legislature: Assessment of Recovery Residences

December 15, 2025

In Accordance with Act 163, Section 2, Assessment: Growth and Evaluation of Recovery Residences

Submitted to: House Committee on Human Services
Senate Committee on Health and Welfare

Submitted by: Rick Hildebrant, MD, Commissioner, Vermont Department of Health

Prepared by: Vermont Department of Health

HealthVermont.gov
802-863-7200



Recovery Residences - Certification



[Vermont Alliance for Recovery Residences \(VTARR\)](#)

Level 1 PEER-RUN	Level 2 MONITORED	Level 3 SUPERVISED	Level 4 SERVICE PROVIDER
Level I	Level II	Level III	Level IV
Entirely <i>Peer Run</i>	<i>Managed Environment,</i> House rules and designated leaders	<i>Supervised Environment,</i> Staffing and life skills programming	Offers <i>Clinical Services*</i>

**Interchangeable with residential 3.1 treatment available in three locations in Vermont*

[National Alliance for Recovery Residences \(NARR\)](#)

Levels of Support

Recovery Residences - Inventory



8 organizations



29 locations



145 beds



26 locations and 137 beds are VTARR certified



23 locations and 121 beds are VTARR certified at NARR Level II



3 locations and 16 beds are VTARR certified at NARR level III

Community Resources - Inventory



404

total community
recovery resources
identified



25

employment
resources (e.g.,
HireAbility, Vermont
Job Link)



54

recovery resources
(e.g., mutual aid
group, recovery
center)



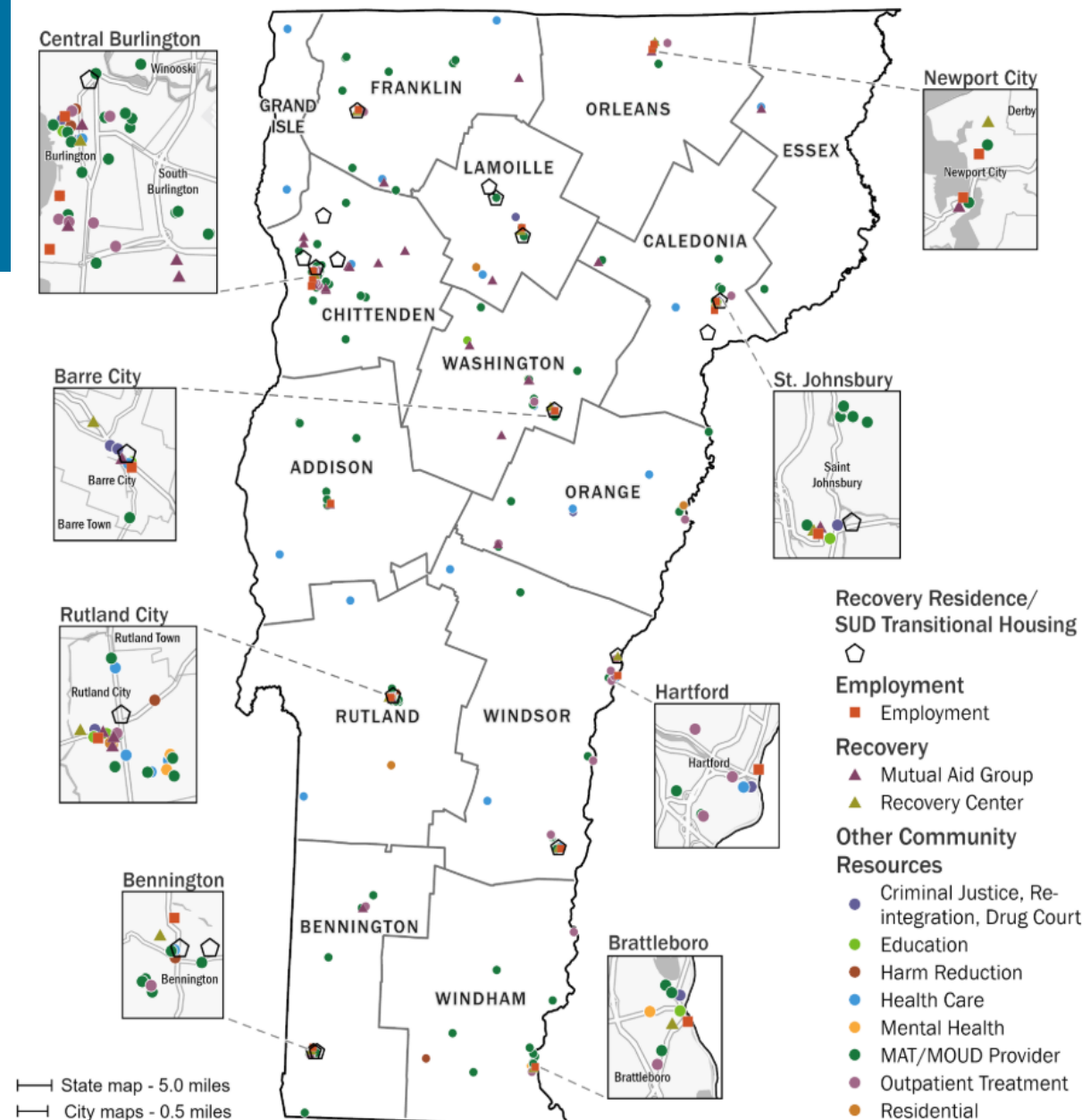
325

other community
resources (e.g.,
treatment, criminal
justice/drug
court/reintegration,
education, harm
reduction, etc.)

Recovery Residences - Proximity to Health & Support Services

Proximity to community resources is an important consideration when siting recovery residences

Most counties in Vermont have higher recovery ecosystem index scores (e.g., access to services) compared to the U.S. average



Recovery Residences - Data Highlights



Recovery residences (funded by the Department) currently **collect and report robust outcomes data** to the Department.



Based on survey feedback, some recovery organizations are **using a data management system** specifically designed to manage **resident level data**.



Data collection and cost of data systems are challenging for some recovery organizations, but **funded organizations have been able to provide** all Department-requested data.

Recovery Residence - Current State Findings

1 Lack of recovery residence capacity

2 Financial resources as a barrier to continued operation

3 Funding identified as a key barrier

4 Lack of diversity among recovery residences with regards to the NARR levels

5 State's current landlord tenant law a barrier to operation

6 Need for recovery residences tailored to specific populations

7 Barriers to data collection

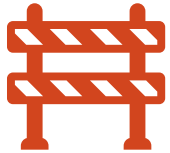
8 Strengths of the state's recovery ecosystem

9 Transportation, travel distance, and stigma identified as barriers

10 Many challenges being faced by the recovery ecosystem

11 Further enhancements to the criminal justice system can connect individuals to recovery support services

Recovery Residences - Report Recommendations



*Address barriers to
expanding capacity*



*Address gaps in
Vermont's recovery
residence landscape*



*Amend landlord-tenant
statute*



*Support ongoing
collection of **outcome**
information for recovery
residences*

Thank you!

Let's stay in touch.

Email: Emily.Trutor@vermont.gov

Web: <https://www.healthvermont.gov/>

Social: @HealthVermont

