

# Vermont Health Care Transformation

**April 2026**

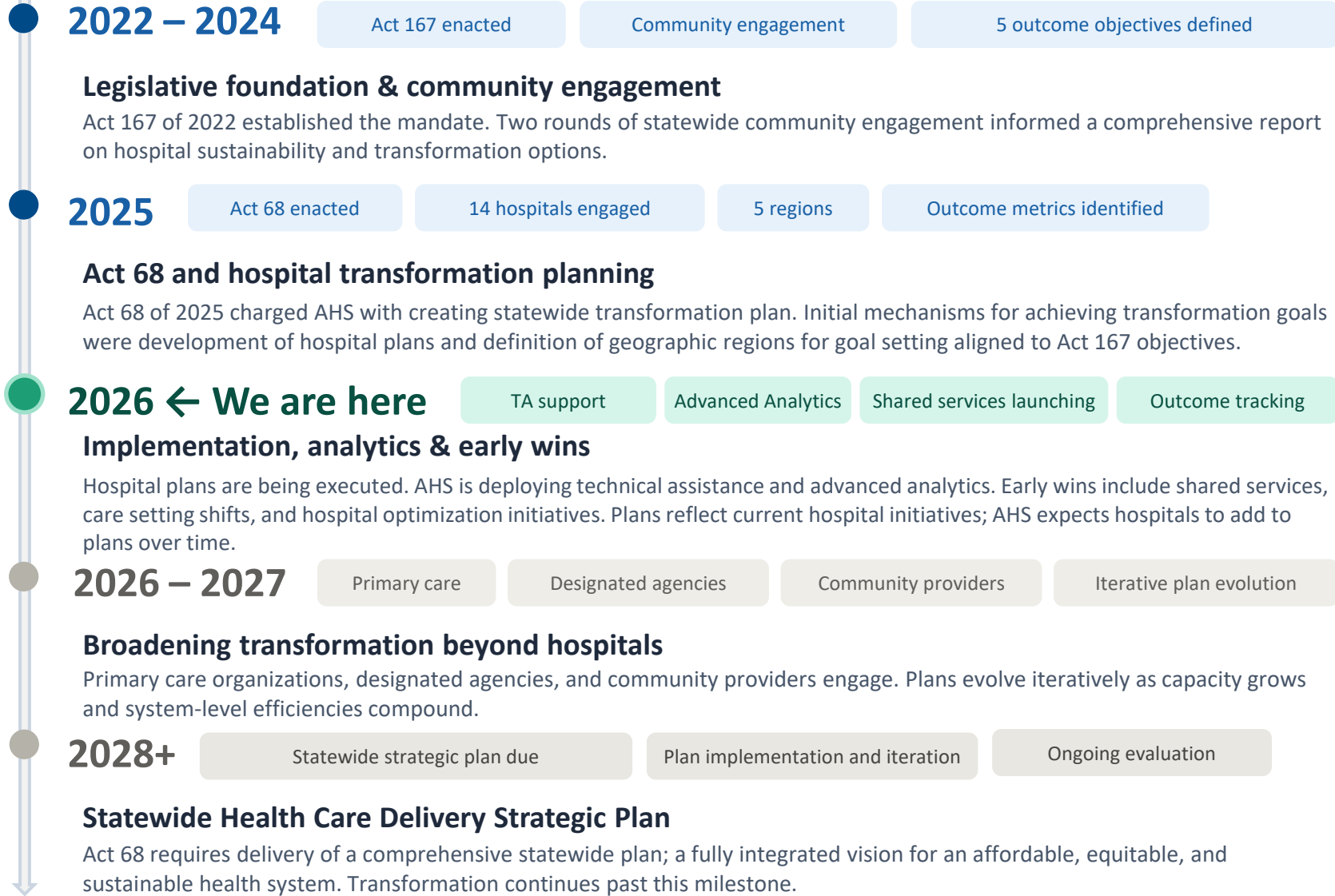
**Katie Carrell, Care Transformation Director, Office of Health Care Reform**

**Craig Jones, Care Transformation Consultant , Office of Health Care Reform**

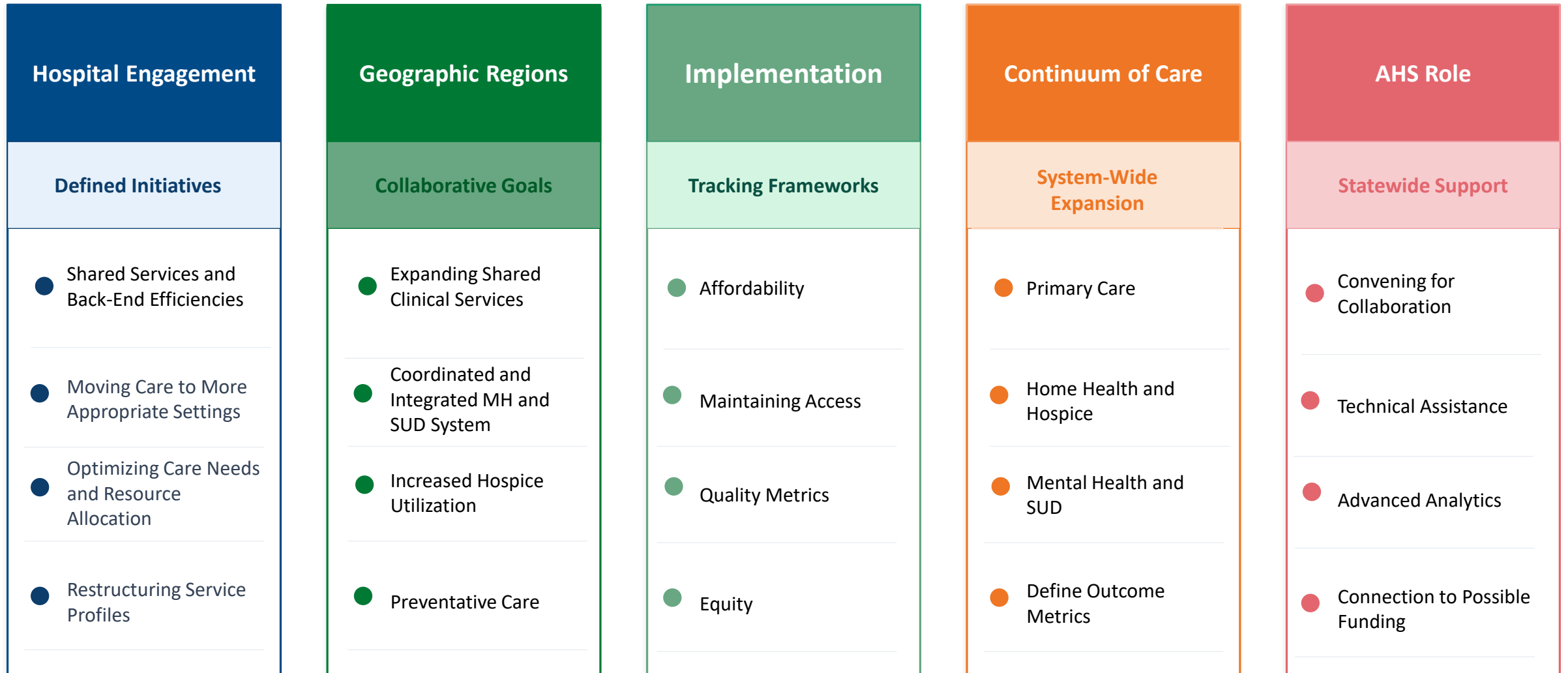
# Vermont Health Care Transformation

## Where we are

- Completed
- In progress
- Upcoming



# Vermont Health Care System Transformation



# Vermont Health Care System Transformation

## Theme: Shared Services to Create Back-End Efficiencies

Goal	Relevant Hospitals	Approach	Status
<b>Shared purchasing</b>	NMC, Rutland, BMH, Copley, Gifford	Jointly purchase supplies, insurance pools, and other back-end services	<b>In Progress</b>
<b>Shared administrative and non-clinical services</b>	Mount Ascutney, Gifford, NMC, Springfield	Share administrative functions including billing, HR, legal, and revenue cycle management with network or partner hospitals	<b>In Progress</b>
<b>Shared clinical staffing</b>	Gifford, North Country, NVRH, UVM Health	Share specialty and clinical staff including radiology, pulmonology, and other hard-to-recruit positions across hospitals	<b>Initiation phase</b>
<b>Shared technology infrastructure</b>	UVM Health Network, North Country, Springfield	Pursue shared electronic health record platform and interoperable data systems to reduce redundant technology costs	<b>Initiation phase</b>

# Vermont Health Care System Transformation

## Theme: Moving Care to More Appropriate, Lower-Cost Settings

Goal	Relevant Hospitals	Approach	Status
<b>Improve hospice utilization</b>	Rutland, UVM Health, SVMC	Formalize referral partnerships, shared clinical protocols, and integrated care teams to improve timely hospice access	<b>In Progress</b>
<b>Expand telehealth and remote monitoring</b>	NVRH, UVM Health, North Country	Expand telehealth e-consults and remote monitoring to support care closer to home, especially in rural regions	<b>In Progress</b>
<b>Expand Mobile Integrated Health (MIH) programs</b>	Grace Cottage, BMH	Expand MIH programs serving patients with COPD, CHF, and other high-utilization conditions; transition to sustainable payment model	<b>In Progress</b>

# Vermont Health Care System Transformation

## Theme: Optimizing Care Needs and Resource Allocation

Goal	Relevant Hospitals	Approach	Status
<b>Statewide bed tracking and transfer coordination</b>	All hospitals	Explore feasibility of a statewide system to track hospital beds and coordinate transfers in real time	<b>In Progress</b>
<b>Improve the process to move patients back to their home hospitals/lower-cost hospitals</b>	Gifford, NVRH, BMH, Rutland	Increase acceptance of transfers from tertiary hospitals; improve transfer coordination to keep appropriate care local	<b>In Progress</b>
<b>Advanced analytics to support system-level planning</b>	AHS statewide	Build analytic capacity to assess service line performance, identify gaps, and model the impact of transformation strategies	<b>In Progress</b>

# Vermont Health Care System Transformation

## Theme: Restructuring Service Profiles to Be More Cost Effective

Goal	Relevant Hospitals	Approach	Status
<b>Service Line Analyses</b>	Copley, Gifford, Grace Cottage, Springfield, BMH	Analyze service lines to ensure optimal offerings and alignment.	<b>In Progress</b>
<b>Strategic alignment for organizational stabilization</b>	BMH	Conduct a comprehensive review to ensure long term stability, financial sustainability and high-quality patient care.	<b>In Progress</b>
<b>Design and implement sustainable community based maternity care model</b>	NMC	Investigate new practice model to continue providing comprehensive reproductive health services.	<b>In Progress</b>

**Thank you!**