

# Designated and Specialized Service Agencies

*Providing an indispensable community-based system supporting mental health, substance use, and intellectual and developmental disability needs across Vermont*



# DA/SSAs are your community-based experts in Mental Health, Substance Use, and Intellectual and Developmental Disabilities

**Specialized, long-term support:** Agencies provide ongoing, community-based mental health, substance use, developmental disability services (like intensive case management, residential programs, psychiatric services, and peer support) that extend far beyond short-term interventions, ensuring critical support of Vermonters and partners like Primary Care, Hospital, and First Responders.

**Safety net for vulnerable populations:** They serve as Vermont's essential safety net, ensuring access to mental health, substance use, and developmental disability services regardless of insurance status or ability to pay

**Continuity for complex needs:** Agencies maintain sustained care coordination across months or years, filling the critical gap between acute hospital treatment and routine medical care.

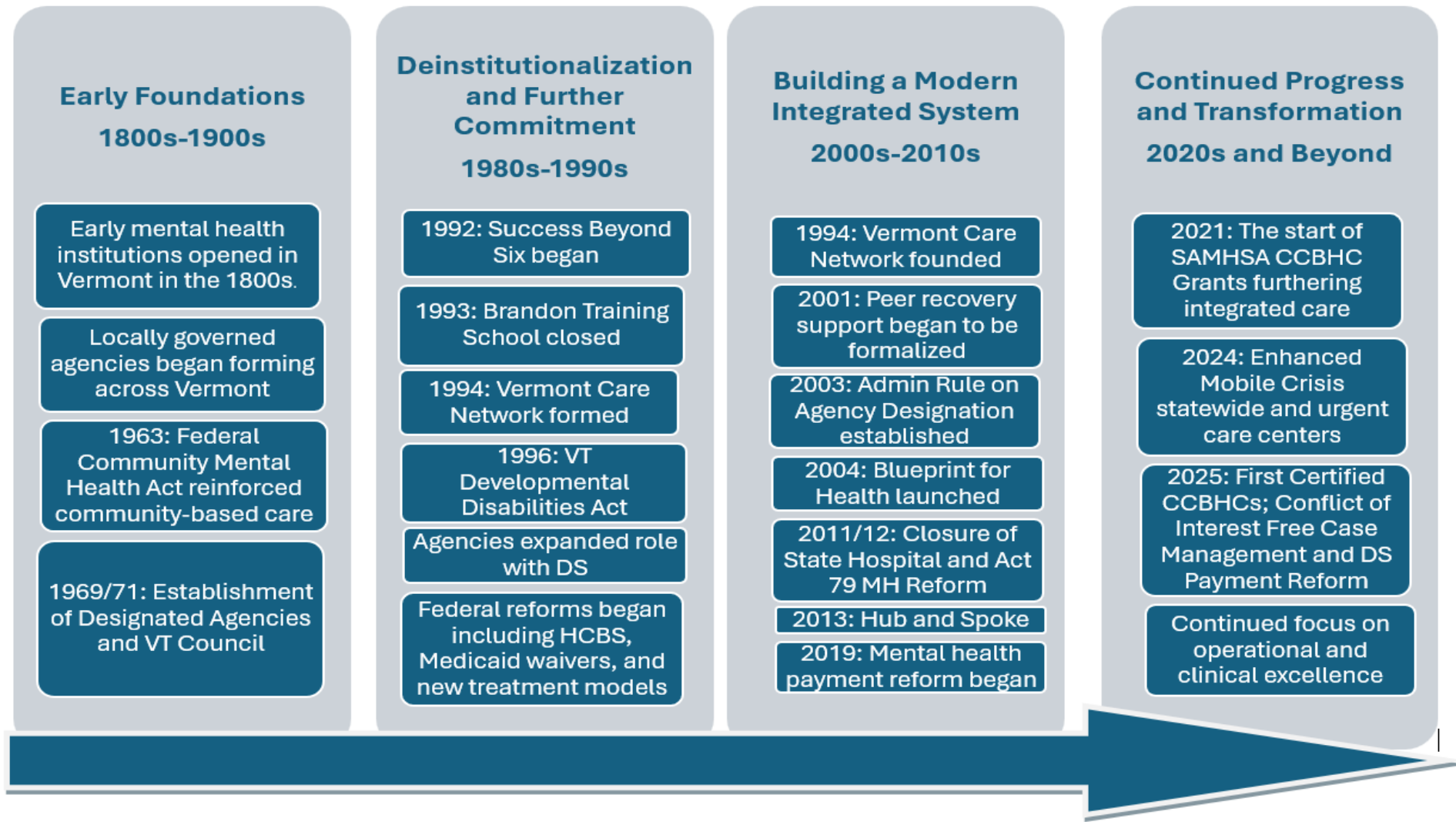
## There are **16 agencies** in the Vermont Care Partner Network:

AGENCY	TYPE	SERVICES
Champlain Community Services (CCS)	Specialized Service Agency	Developmental Services
Clara Martin Center (CMC)	Designated Agency	Mental Health, Substance Use Provider
Counseling Service of Addison County (CSAC)	Designated Agency	Mental Health, Developmental Services, Substance Use Provider
Families First in Southern Vermont (FFSV)	Specialized Service Agency	Developmental Services
Green Mountain Support Services (GMSS)	Specialized Service Agency	Developmental Services
Health Care and Rehabilitation Services (HCRS)	Designated Agency	Mental Health, Developmental Services, Substance Use Provider
Howard Center (HC)	Designated Agency	Mental Health, Developmental Services, Substance Use Provider
Lamoille County Mental Health Services (LCMHS)	Designated Agency	Mental Health, Developmental Services
Lincoln Street, Inc. (LSI)	Specialized Service Agency	Developmental Services
NFI Vermont, Inc. (NFI)	Specialized Service Agency	Children, Youth, and Family Mental Health Services
Northeast Kingdom Human Services (NKHS)	Designated Agency	Mental Health, Developmental Services, Substance Use Provider
Northwestern Counseling and Support Services (NCSS)	Designated Agency	Mental Health, Developmental Services, Substance Use Provider (Children/Youth)
Rutland Mental Health Services / Community Care Network (RMHS)	Designated Agency	Mental Health, Developmental Services, Substance Use Provider
United Counseling Service (UCS)	Designated Agency	Mental Health, Developmental Services, Substance Use Provider
Upper Valley Services (UVS)	Designated Agency	Developmental Services
Washington County Mental Health Services (WCMHS)	Designated Agency	Mental Health, Developmental Services, Substance Use Provider

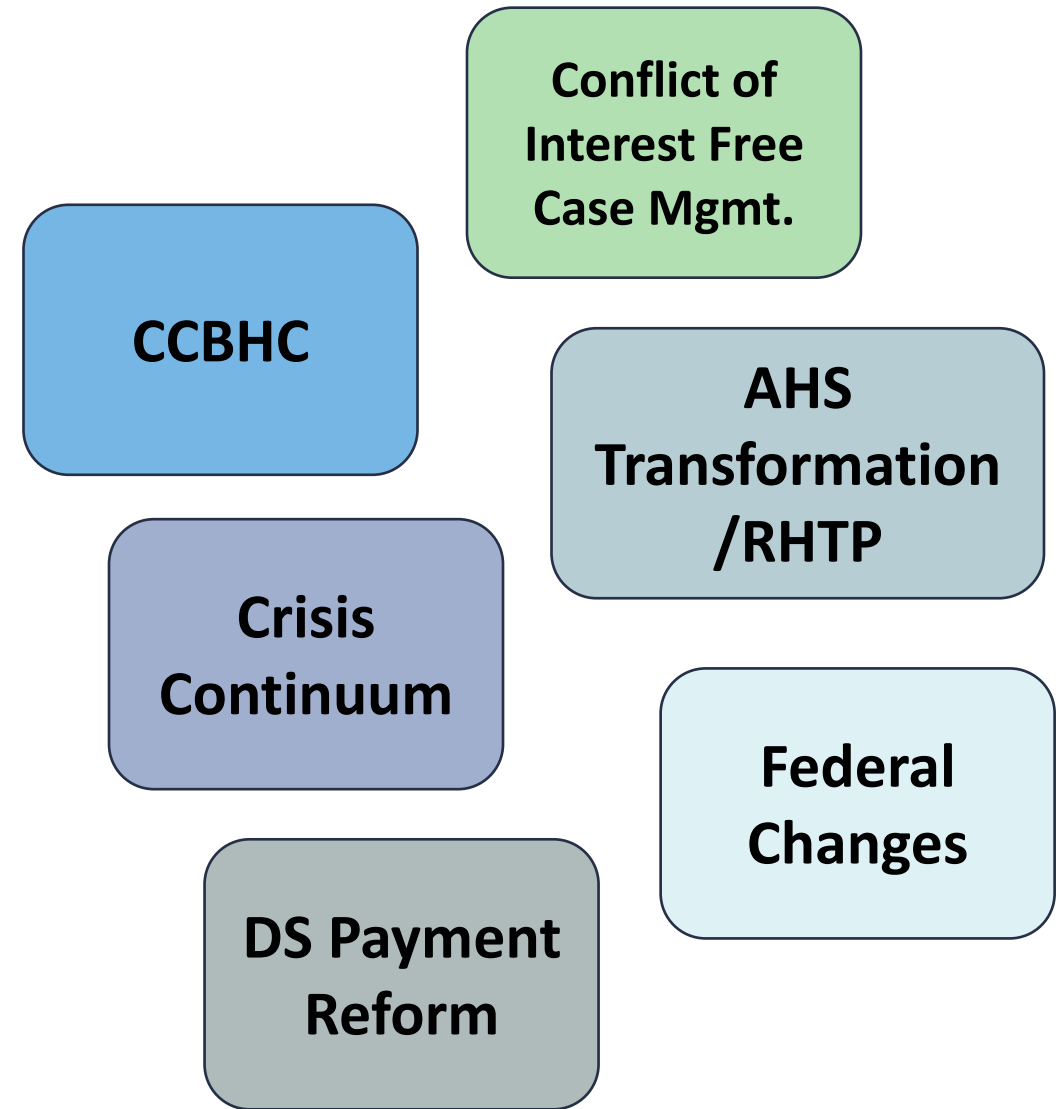


## VERMONT'S EVOLVING COMMUNITY BASED SYSTEM

**BUILT OVER GENERATIONS AND SHAPED BY A CLEAR AND STEADY COMMITMENT AWAY FROM  
INSTITUTIONAL CARE AND TOWARD SERVICES ROOTED IN COMMUNITIES**



# Systems Reform and Transformation



## THREE KEY AREAS OF OUR WORK:



Upstream  
Supports for  
Prevention and  
Stabilization



Holistic Supports:  
Effective  
Intervention



Community  
Crisis Response

VCP agencies deliver **64%** of all services  
in people's homes and community settings.



## Designated Populations VCP Agencies Serve

Adults with  
Serious Mental  
Health Challenges

Child, Youth, and  
Families

Vermonters in  
Crisis

Individuals with  
I/DD

## Additional Services Provided by the DAs/SSAs Include:

**Adult Outpatient Services**

**Peer Services**

**School Services**

**Substance Use Services**

**Criminal Justice Services**

**Residential Services**

**Therapeutic Schools**

**Child Outpatient Services**

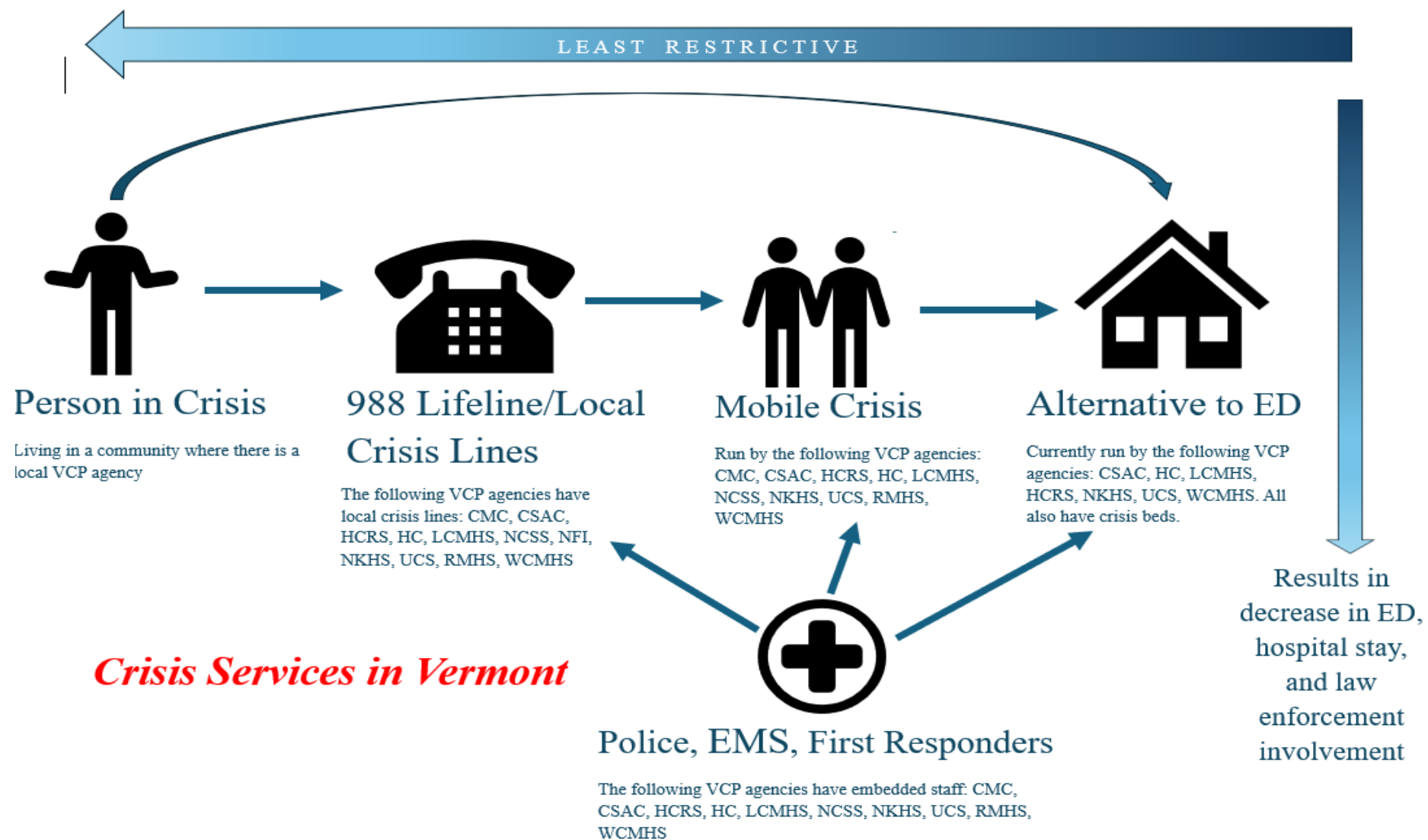
**Prenatal to 8 Services**

**Veteran Services**

**Elder Care Services**

**Outreach to the Unhoused**





### *Crisis Services in Vermont*

This is the crisis continuum of care within the context of the entire mental health system. In Vermont, someone experiencing a mental health crisis can seek treatment at any point of access.

# Prenatal to 8 Services

## **Perinatal supports**

Perinatal clinical supports  
Perinatal mental health screening/assessment  
Doula support – prenatal, postpartum, labor/delivery  
Hospital rounds – labor/delivery floor  
Perinatal home visiting  
Perinatal grief loss

## **Early childhood clinical/family supports**

Early childhood and family mental health programming  
Child/adolescent outpatient therapy  
Family therapy  
Play therapy  
PCIT – parent-child interaction therapy  
CPP – child-parent psychotherapy  
Parent supports/parent education  
Childhood grief/loss/bereavement supports

## **Home based services**

Clinical home visiting  
Case management/family support  
Evidence based home visiting models  
Early intervention – part C

## **Early care and education programming**

Therapeutic childcare  
Head start/early head start  
Consultation to childcare providers  
Embedded clinicians/staff in childcare centers

## **Embedded pediatric programs**

Pediatrics  
OB  
DULCE

## **I/DD or DS services to children**

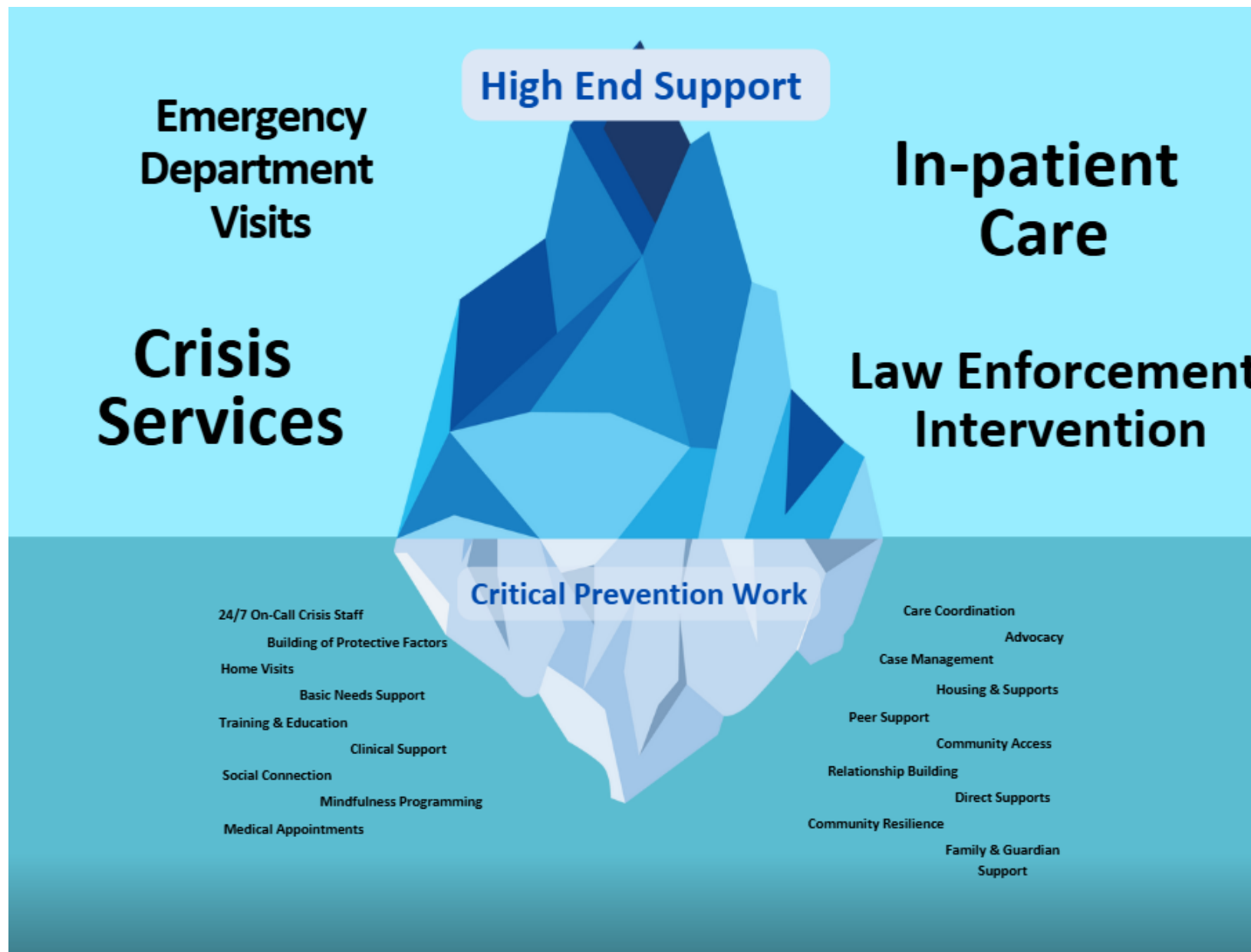
Case management/service coordination  
Family support (flexible spending, respite coordination, etc.)  
Early childhood developmental supports

## **School-based/early education supports**

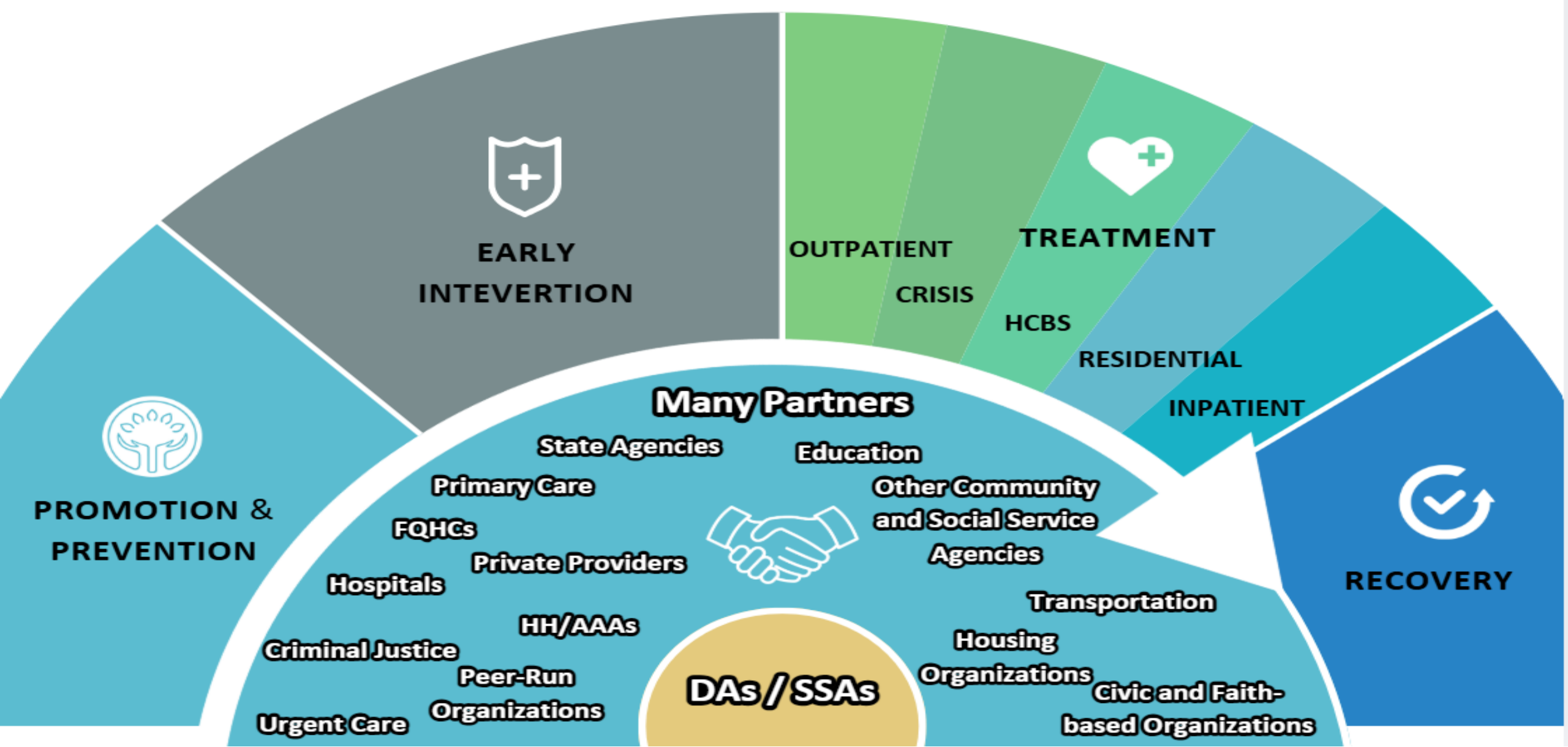
School based clinicians in elementary schools  
Clinicians or consultation in early ed or pre-k programs  
Behavioral/social/emotional support specialists in elementary  
Consultation to elementary schools/educators  
Parent engagement/family support in schools

## **Other**

Children's integrated services  
Food shelf/food access  
Concrete/basic needs assistance  
Transportation  
Parenting classes/support group







# 3,720,602

**services provided  
in fiscal year 2025 –  
over 14,000 per day!**

## TOP REFERRAL SOURCES

### Adult services

- 1) Individual/family
- 2) Primary care
- 3) Hospital
- 4) Courts/probation/judges
- 5) Other community partners

### Child services

- 1) Family
- 2) Primary care
- 3) School
- 4) Hospital
- 5) DCF

# The Mental Health Landscape

## DAs/SSAs

- Community-based, co-occurring MH services for people with higher acuity needs throughout the age continuum. Specialty supports/programming. 24/7 crisis.

## Private Practice

- Outpatient therapeutic supports – short and long term

## DMH

- Vermont Psychiatric Care Hospital & River Valley Therapeutic Residence

## Schools

- In-house therapeutic supports

## Hospitals

- Acute MH services, crisis stabilization, inpatient psychiatric care

## SB6 Schools & Therapeutic Schools

- School based clinicians, behavioral interventionists, and school-based behavioral consultants

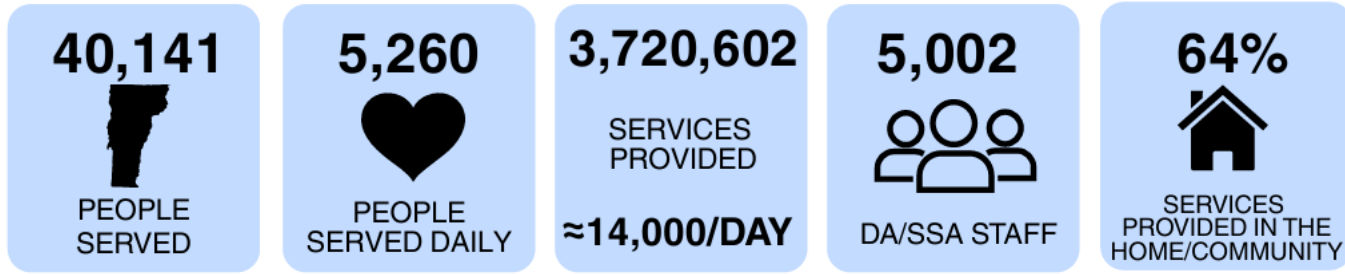
## Primary Care/Blueprint

- Short-term outpatient therapeutic supports

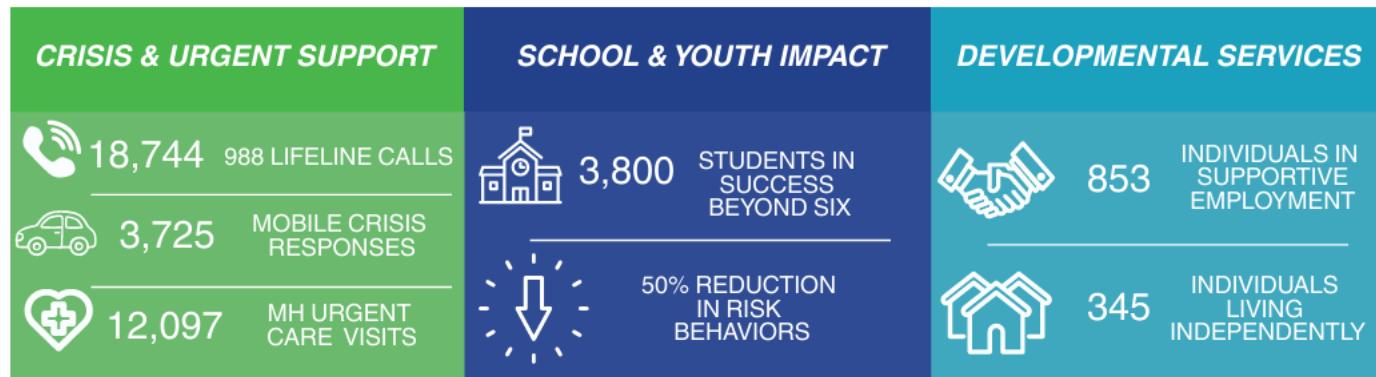
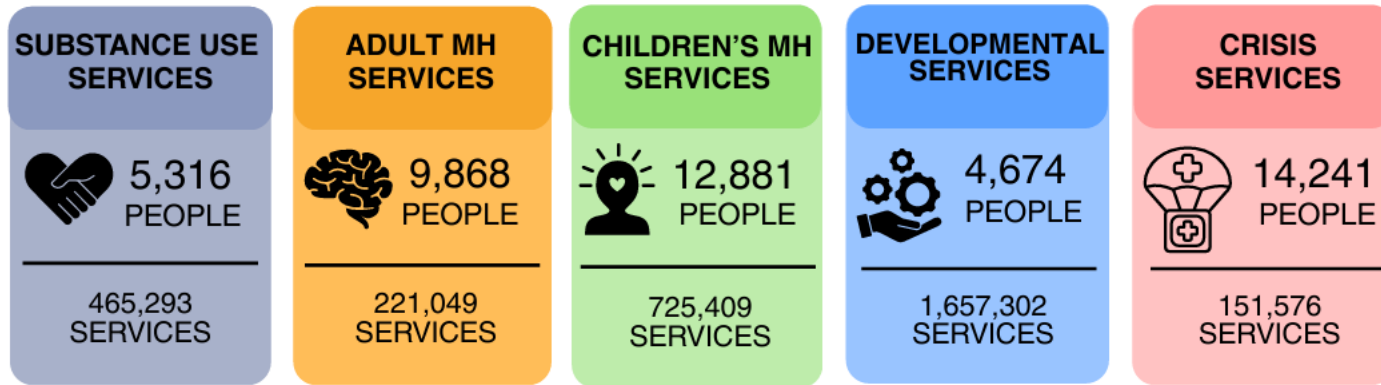
## FQHCs

- MH services as part of a comprehensive model of primary care

## VERMONT'S COMMUNITY-BASED SERVICES BY THE NUMBERS - FY25

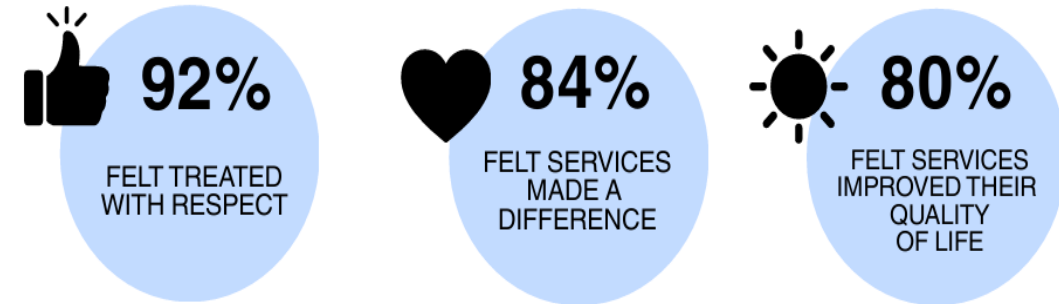


### PROGRAM HIGHLIGHTS



# VCP By the Numbers

### CLIENT SATISFACTION



**43% of individuals with I/DD have co-occurring MH needs**







Amy Johnson – Director of Legislative Affairs and Public Policy  
[amy@vermontcarepartners.org](mailto:amy@vermontcarepartners.org) / (269) 873-1207