



**TRUST FOR
PUBLIC
LAND™**

Connecting everyone to the outdoors™

Kate Wanner
Vermont Conservation Director, Trust for Public Land

We are

CONNECTING EVERYONE TO THE OUTDOORS.

Our mission

is to create parks and protect land for people, ensuring healthy, livable communities for generations to come.

Access to the outdoors is a fundamental human need and essential to our health and well-being.

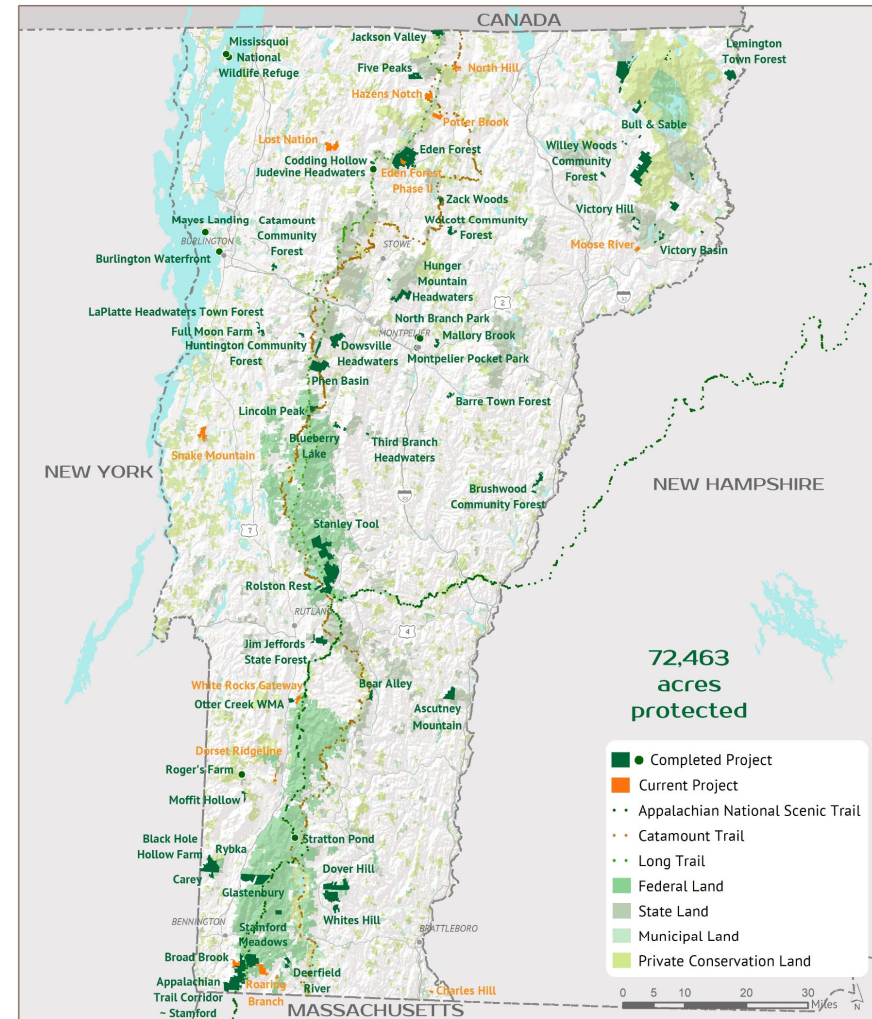
Communities that place a high value on outdoor access for all are healthier, more resilient and more equitable.



- Additions to Green Mountain National Forest and National Wildlife Refuge
- Additions to State Forests and State Parks
- New Community Forests, recent focus to create new outdoor access near schools
- Protection of large private forests with Forest Legacy easements
- Focus on protection of Long Trail, Appalachian Trail Corridor, Catamount Trail, Velomont Trail and community trail networks

Force behind iconic landscapes:

- ✓ Burlington Waterfront
- ✓ Barre Town Forest @ Millstone Trails
- ✓ Blueberry Lake GMNF
- ✓ Ascutney Mountain
- ✓ Catamount Community Forest
- ✓ Rolston Rest addition to GMNF



Vermont

COMPLETED AND CURRENT PROJECTS

February 12, 2025. Copyright © Trust for Public Land. Trust for Public Land and Trust for Public Land logo are federally registered marks of Trust for Public Land. Information on this map is provided for purposes of discussion and visualization only. www.tpl.org





In Vermont:

- Vermont **loses 10-12,000 acres** of intact forestland a year – the canvas of outdoor recreation.
- **63%** of Vermont's conserved land provides public access, compared with 87% in NH and Maine.
- **More than 1 out of every 5** Vermonters, including **31,000 kids**, lack close to home access to the outdoors*
- **43%** of Vermont's K-12 schools lack walkable off campus park or open space
 - *But if you are low income or live in a community that suffers from poor mental health, you are **roughly 1.5x less likely** to have walkable park and open space access near local schools*



* further than a 10-minute drive to permanently protected park or open space of 1 acre or more

Ascutney Mountain

Helping a community fulfill their vision for a new future



Town of West Windsor



LOCATION--East Central Vermont, 6 Miles from Exit 8, Interstate 91 on Vermont Rt. 44, in Brownsville, VT.
BASE ELEVATION--815' **VERTICAL DROP**--1470'
EXPOSURE--Northwest **OPERATES**--Daily
LIFTS--Double Chairlift 4750'; 3 T-Bars 2300', 2250' and 600'.
SLOPES and TRAILS--20 Trails.. novice to expert:

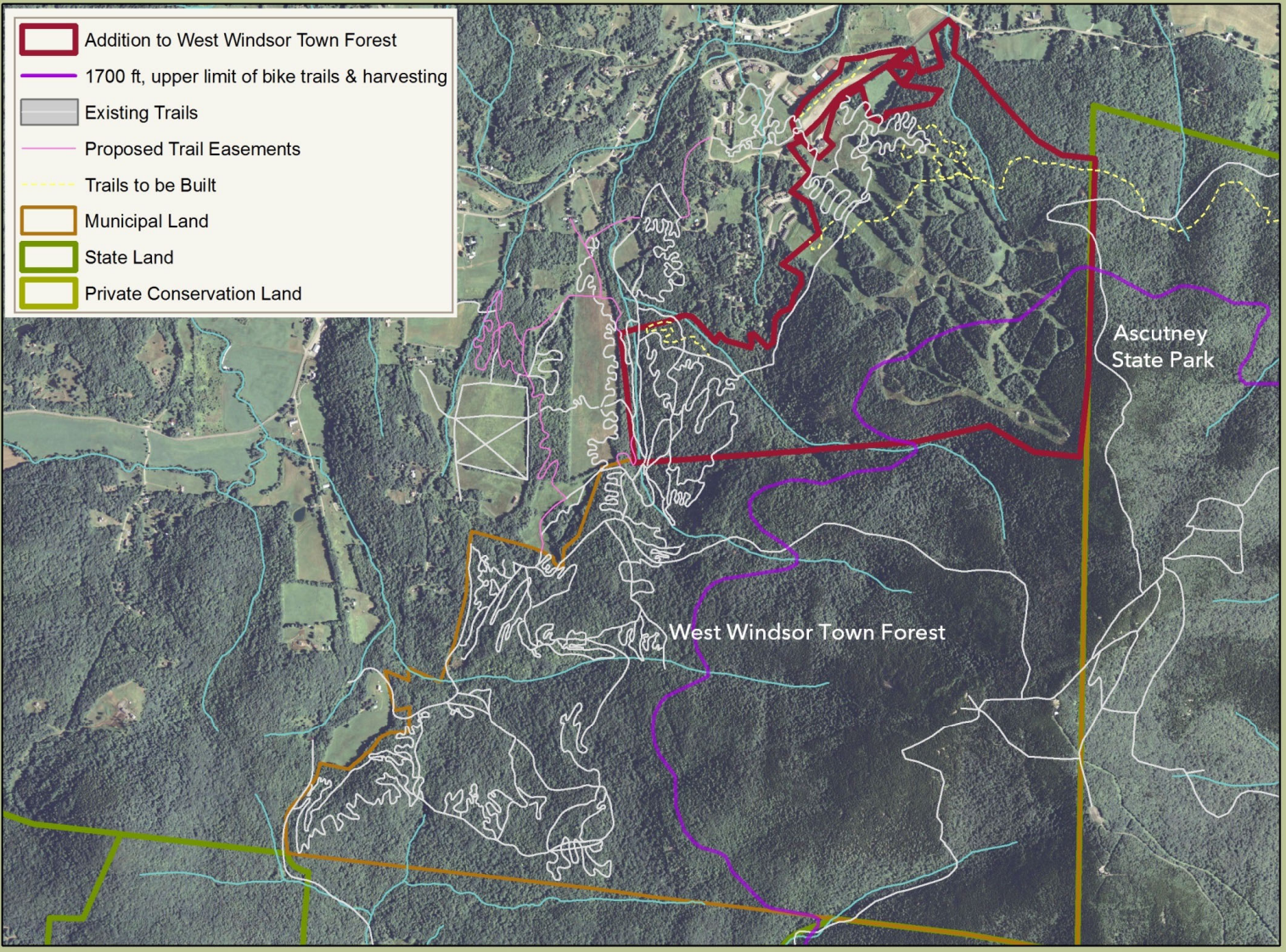
FEATURES--Fine food and after skiing pleasure at the Polar Bear Dining Room and Lounge in the Ascutney Mountain Base Lodge. Ski School has a "See Yourself Ski on Videotape" program. Ascutney Mountain Chalet Apartments at the slopes. All inclusive ski week package plans. Vacation Junior Race Training Programs. Proven snowmaking operation. Free parking. For reservations call collect, Reading, Vermont 434-7722.
COM--For 215 in immediate area, 700 within 18 miles. l. 802/484-7711

[Image] NewEnglandSkiHistory.com

WINDSOR, VERMONT

Storyform 6/16





IMPACT: 10 years later

- Community Concerts
- New Discovery Trail
- Outdoor after-school program
- Summer adventure camp
- Private events
- Races:
 - Vermont 50
 - Vermont Overlander
 - Ragnar
 - Gnar Weasel
 - High school mountain bike races
 - Weekly ski races

The New York Times

A Town That Saved a Mountain, and a Mountain That Saved a Town

After the Ascutney ski resort in Vermont closed because of erratic snowfall and mismanagement, it threatened to take with it the nearby town of West Windsor. The community took the situation into its own hands.



Trails as Rural Revitalization

West Windsor 10 years later:

- New Ascutney Outdoors Center
- Rope tow T-bar and tubing lift installed
- New expanded, updated and thriving general store
- 2010-2020: population jumped 22% (Vermont grew by only 2%)
- More permanent residents vs seasonal residents stabilized school enrollment
- 2010-2020: Single family home prices more than doubled (compared to Vermont: 27% increase)
- Revitalization of General Store as Brownsville Butcher & Pantry
- population: 1,008 in 2016
1,344 in 2020



Please Support full funding for VHCB

