



New Frameworks



Ace McArleton (he/him) , Co-Founder & CEO
18A Morse Drive, Essex Junction, VT 05452

Vision:

The creation of healthy spaces and a just, safe planet for all people for generations to come.



New Frameworks



New Frameworks



Housing with structural straw panels (S-SIPs): From Farm to Home

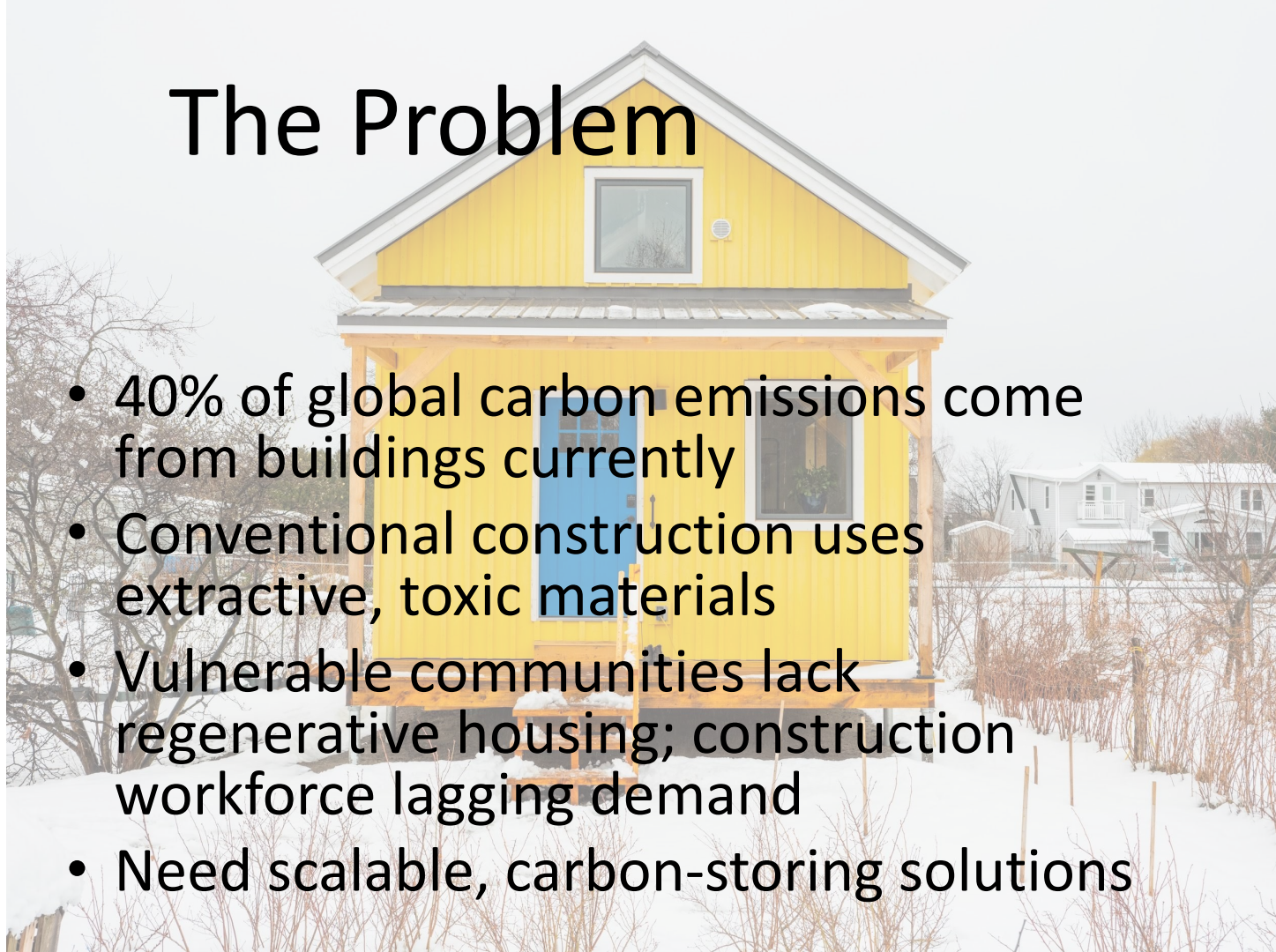




New Frameworks

The Problem

- 40% of global carbon emissions come from buildings currently
- Conventional construction uses extractive, toxic materials
- Vulnerable communities lack regenerative housing; construction workforce lagging demand
- Need scalable, carbon-storing solutions





New Frameworks

Our Solution

- Prefabricated Straw Insulated Panels (S-SIPs)
- Casitas: Affordable regenerative homes
- Seed Program: Train local manufacturers
- Seed Collaborative: National cooperative network





New Frameworks

Our Product

- Custom S-SIPs for institutions and homes
- Casitas kit homes
- Seed Program and Collaborative





New Frameworks

Business Model

- Revenue: Fabrication + Installation
- Seed Program tuition
- Shared services from Seed Collaborative
- Growth via earned revenue, no outside investors



New Frameworks



New Frameworks' Casitas



Client profile 1:

- Intergenerational infill housing
- Families, friends, chosen family looking to live together but have separate living units



New Frameworks

Casita Agua, Bristol VT

Client profile 2:

- ADUs for market rentals
- VHIP ADU grant recipients (HUD fair market rent)



Cabañita, Winooski VT



Cabañita, Winooski VT



New Frameworks

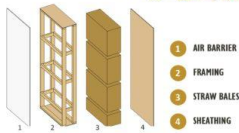


THE SITE IS Laid OUT IN A CLASSIC POCKET NEIGHBORHOOD CONFIGURATION THAT SEPARATES PEDESTRIAN ACCESS THROUGH THE COMMONS IN THE CENTER FROM AUTOMOBILE ACCESS FROM THE PERIMETER SIDE. THE ENTRY TO EACH UNIT IS RECEIVED FROM THE COMMONS TO PROVIDE SPACE FOR PRIVATE GARDENS. MEANWHILE, THE COMMONS PROVIDES COLLECTIVE SPACE TO BUILD MEANINGFUL RELATIONSHIPS THROUGH COMMUNITY GARDENS AND ACTIVITIES, ALL WITH A VIEW TO THE POND AND THE COMMUNITY STRUCTURES BEYOND.

MEADOWS

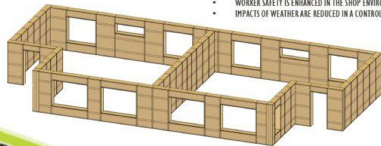


STRAW PANEL - INSULATION
 STRAW BALE INSULATION IS MADE FROM 100% ORGANIC WHEAT STRAW FROM AURORA FARM IN THE COMPLAINVILLE NEIGHBORHOOD.
 FRAMING LUMBER IS FROM FONTAINE SAWMILL IN EAST MONTPELIER USING LOCALLY SOURCED AND SUSTAINABLY MANAGED TIMBER.
 90% OF PANEL VOLUME IS PLANT-BASED.
 75% OF PANEL MATERIALS ARE GROWN AND SOURCED WITHIN 50 MILES OF FABRICATION.
 PLANT-BASED BUILDING MATERIALS DRAW DOWN CARBON FROM THE ATMOSPHERE AND SAFELY STORE IT, HELPING TO REBALANCE OUR CLIMATE.
 THE MEADOWS AT INN ALONG THE WAY PROJECT STRAW PANEL WALLS STORE:
 5.5 kg CO₂e/kg of STRAW PANEL
 16.9 t CO₂e/TONNE OF STRAW
 63,863 kg CO₂e/ENTIRE PROJECT



PANELIZED CONSTRUCTION BENEFITS

- LESS TIME ON SITE MEANS LOWER DAILY COSTS, TIGHTER SCHEDULES, SHORTER CONSTRUCTION SCHEDULES, AND LESS TRANSPORTATION CARBON EMISSIONS
- QUALITY CONTROL IS SIMPLY AND ROBUST
- EFFICIENCY OF PRODUCTION IS IMPROVED THROUGH HORIZONTAL CONSTRUCTION IN A CONTROLLED ENVIRONMENT
- WORKER SAFETY IS ENHANCED IN THE SHOP ENVIRONMENT
- IMPACTS OF WEATHER ARE REDUCED IN A CONTROLLED ENVIRONMENT



NEW FRAMEWORKS IS A MULTI-RACIAL, WOMEN, QUEER, AND TRANS-OWNED AND RUN CO-OPERATIVE COMMITTED TO AN INDEPENDENT SORT OF BUILDING. LOCALLY SOURCED NATURAL MATERIALS LIKE STRAW, NATIVE WOOD, CLAY AND LIME CONNECT OUR BUILDINGS TO THE PLACES WE CALL HOME. OUR ECOLOGICALLY MINDFUL BUILDING PRACTICES AND COMPREHENSIVE, FULL-SERVICE SYSTEMS DESIGN PROVIDE STATE-OF-THE-ART COMFORT, HEALTH AND EFFICIENCY FOR THE PEOPLE THAT RESIDE IN THEM. NEW FRAMEWORKS PROVIDES HIGH PERFORMANCE NATURAL BUILDING SOLUTIONS TO CREATE CLIMATE JUSTICE AND REGENERATION IN OUR REGION.



INN ALONG THE WAY

INSPIRED IN NATURE

THE BUILDING TAKES ITS HIDE IN THE FIELDS AND MEADOWS OF SARASWOTIYA AND MID-COAST MICHIGAN. THE MEADOWS AT INN ALONG THE WAY CREATES NESTS FOR PEOPLE TO BE WHIPPED IN THE CONNECTION WITH PLACE AND LAND. THE CELESTIAL OF THE BOOBYLAND AND THE FARM SETTINGS ARE MIMICRED IN THE HOMES, TO EMBODY NATURE AND ITS ABILITY TO HEAL US. WE CHOSE A DUPLEX DESIGN TO OFFER BEAUTIFUL, HEALTHY, AND EFFICIENT HOMES AT AN ACCESSIBLE COST, AND TO BALANCE INTERCONNECTED LIVING WITH THE CONSEQUENCE OF SHARED RESOURCES AND PRIVACY.



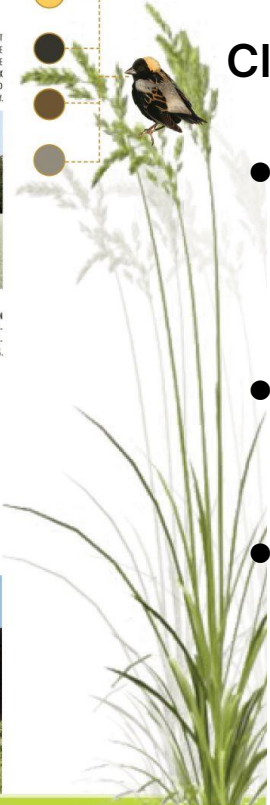
PLAN PROPOSAL

EACH UNIT WILL FEEL SPACIOUS AND UNCLUTTERED THROUGH THE JUDICIOUS PLACEMENT OF WINDOWS AND STORAGE. UNITS WILL BE FULLY ACCESSIBLE WHEN REQUIRED. THE BATHROOM CONFIGURATION ALLOWS THE SHOWER AND TOILET TO BE SIMULTANEOUSLY OCCUPIED, SAVING SPACE AND COST WHILE NOT COMPROMISING ON FUNCTIONALITY. THE MAIN CLOSET WILL CONTAIN THE WASHER/DRYER AND MAY HAVE AN OPTIONAL ENTRY FROM THE OFFICE SHOULD CARTRIDGE ACCESS BE REQUIRED. THE DUPLEX UNIT WILL SAVE APPROXIMATELY 10% ON CONSTRUCTION COST IN ADDITION TO LOWERING THE ONGOING UTILITY COSTS.



Client profile 3:

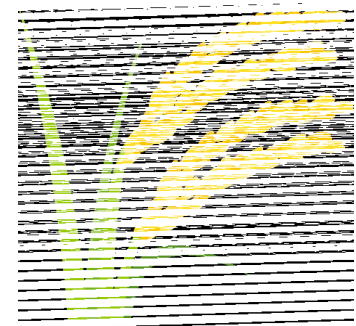
- Small to mid-size developments
- Retirement communities
- Workforce housing



- Straw Panels (S-SIPs) are carbon-storing

- Our Casitas are net carbon storing for the whole home

MATERIAL CARBON PROJECT RESULTS



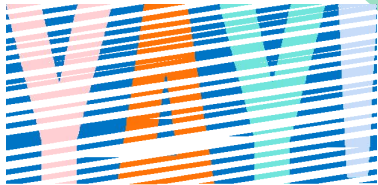
PROJECT INFORMATION			
Project Name	Terra	Construction Year	
Design Firm(s)		Number of Bedrooms	
Engineering Firm(s)		Stories Above Grade	2
Builder / Developer			
Development Project		CONDITIONED AREA	
Street Address		Above Grade	770 ft ²
City		Below Grade	0 ft ²
Province / State		Total	770 ft ²
Country	United States		
Building Type	Single Detached House	GROSS AREA	
Construction Type	New Construction	Excluding Garage	770 ft ²
Project Stage	Construction Documents	Garage	0 ft ²
		Total	770 ft ²

Net total: -3,057 kg CO₂e

Ext. walls: -5,922 kg CO₂e

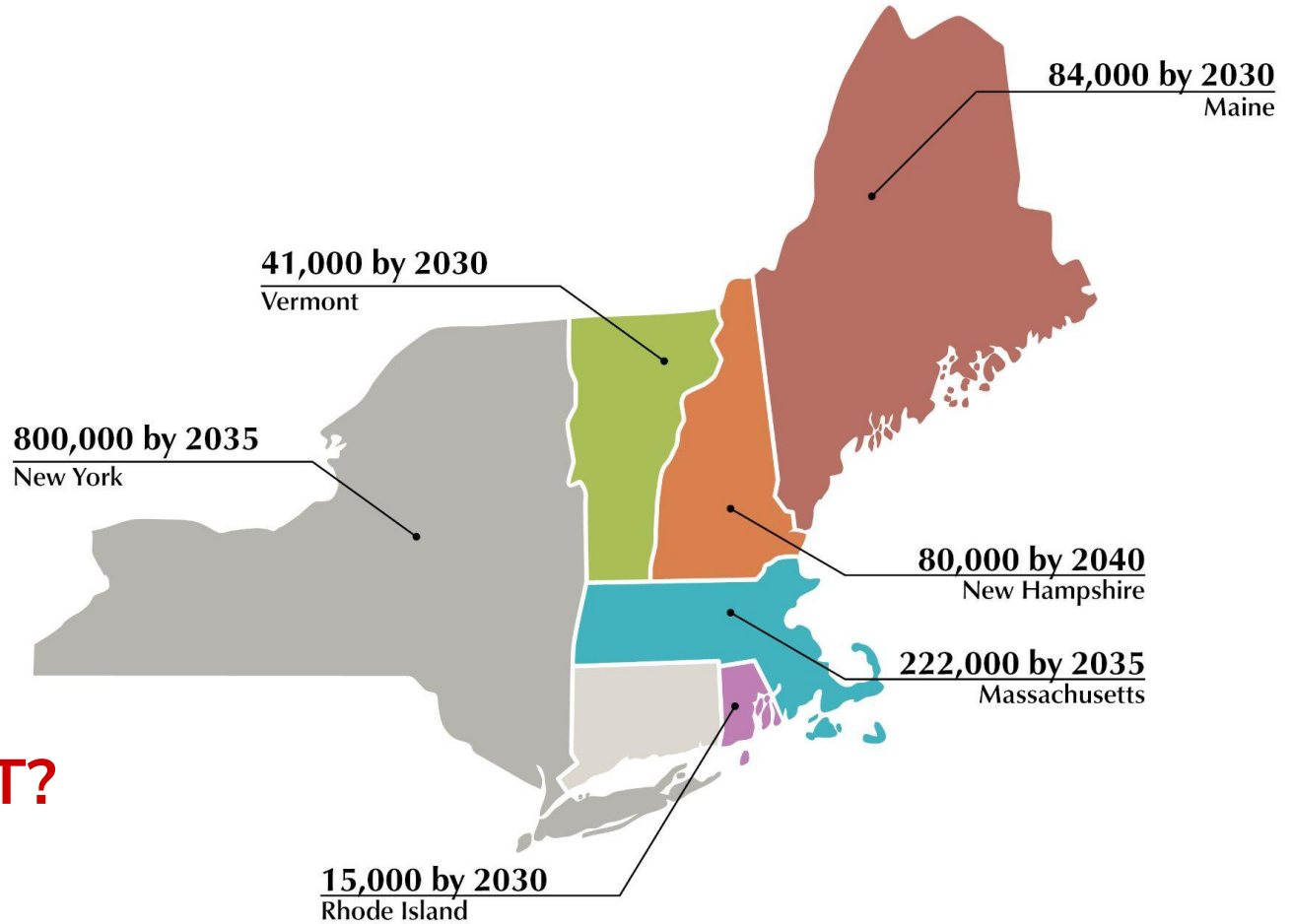
MATERIAL CARBON EMISSIONS BY SECTION	
Footings & Slabs	489 kg CO ₂ e
Foundation Walls	0 kg CO ₂ e
Structural Elements	176 kg CO ₂ e
Exterior Walls	-5,922 kg CO ₂ e
Party Walls	0 kg CO ₂ e
Exterior Wall Cladding	493 kg CO ₂ e
Windows	592 kg CO ₂ e
Interior Walls	235 kg CO ₂ e
Floors	119 kg CO ₂ e
Ceiling	50 kg CO ₂ e
Roof	711 kg CO ₂ e
Garage	0 kg CO ₂ e
NET TOTAL	-3,057 kg CO₂e

- A negative number means more atmospheric carbon was stored than emitted



New Frameworks

The US
Northeast is
projected to
need nearly 2m
new residential
units by 2040



WHAT'S THE CARBON IMPACT?



New Frameworks

Home Construction: BUSINESS AS USUAL

- 73,288,249 TONS CO₂e
= 21 NEW Coal Fired
Power Plants
- 1.2 Million New Cars

**500 MW PLANT WITH 3.5 MILLION TONS OF CO₂e EMISSIONS ANNUALLY
Gasoline Car w/ 55,000Lb CO₂ Lifecycle Emissions*



CARBON STORING SOLUTIONS

- -13,192,458 TONS
CO₂e = 3.8 RETIRED
Coal Power Plants
- 217,600 Cars Removed



New Frameworks

Climate Positive Construction



- Straw stores carbon by absorbing atmospheric carbon dioxide during growth and locking it into its physical form
- When we put straw into our buildings as insulation, we store that carbon dioxide in a fixed form for decades - reversing climate heating and building the world's "6th carbon sink"
- Straw is non-toxic to humans, animal life, and the environment
- It does not off-gas or contain harmful chemicals
- Straw's production is low-emissions



Local economies & Vermont landscapes



Nitty Gritty Grain Co, Charlotte VT



Clifford Sawmill, Hinesburg VT

- Straw panels support farmers by providing a steady market for the waste product from grain production
- We use organic straw that keeps the soil and water healthy
- The straw we use is the same plant that provides flour to Red Hen Bakery for their bread
- Our Casitas utilize local wood from Vermont small wood sawmills, which supports healthy forests and Vermonters who earn their living from the land
- Housing materials dollars stay local



New Frameworks



Health

- **Healthy indoor air quality is a major health priority for our population**
- **Straw SIPs homes are well-insulated and tightly built, creating a comfortable interior without drafts or cold spots**
- **Zero VOCs, no "sick home syndrome"**
- **Not hospitable to mold, bright, warm in winter and cool in summer**
- **Fire-resistant due to density**
- **Casitas are all-electric homes with no combustion gases or fossil fuels**



Workforce Development

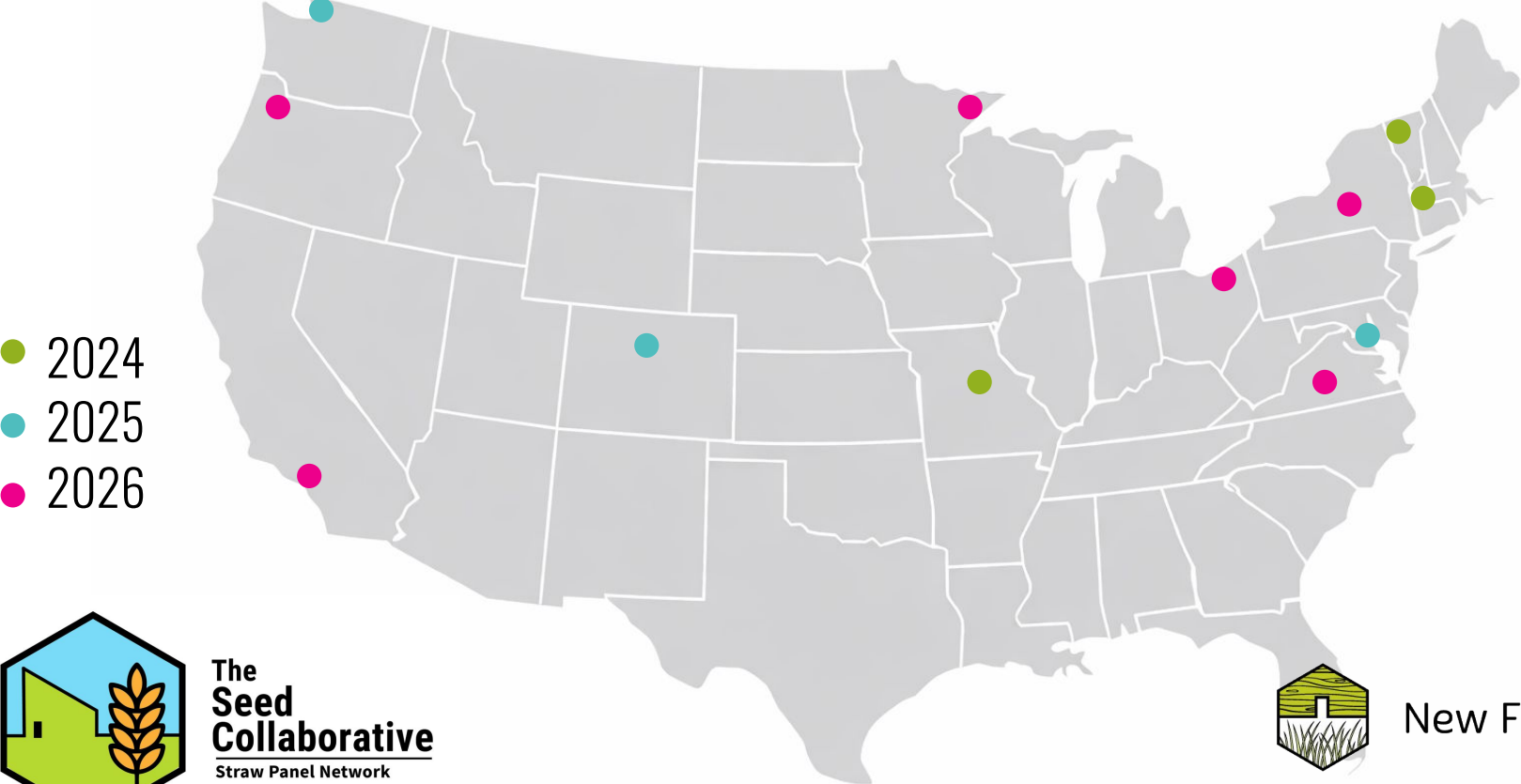


- Off-site construction is welcoming to many types of workers
- Panelized construction leads to less injuries due to safer, controlled, interior work environments
- Off-site panel production is easy to teach to new apprentices which is a benefit in a building trade workforce shortage
- New Frameworks founded the Seed Program, which trains companies across the country to build straw structural insulated panels

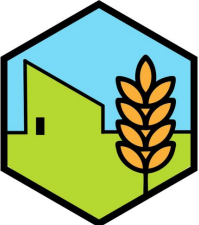


New Frameworks

New Frameworks started the Seed Program & Seed Collaborative, which trains companies across the country to make straw structural insulated panels and to collaborate in their wide adoption.



- 2024
- 2025
- 2026



The Seed Collaborative
Straw Panel Network



New Frameworks

Equity & Diversity



- Climate disruptions disproportionately impact marginalized communities, and reversing climate heating protects those communities
- Off-site construction and pre-designed kit homes make housing more accessible to many - shorter timelines, less cost
- Off-site construction and panelized construction supports a diverse workforce by:
 - A consistent, indoor, year-round facility that is well-lit and protected from weather
 - Replicable tasks that can be easily taught to new apprentices
 - Ergonomic setup to accommodate many body sizes and strengths



New Frameworks

Construction can be a positive force for a regenerative future for all. Let's do it, together!



Thank you!

New Frameworks is a multi-racial, queer, trans, and women-owned cooperative dedicated to delivering natural, carbon-negative, high-performance structures using sustainable, locally sourced materials and socially responsible practices. We create thoughtfully designed, exceptionally efficient, and health-conscious homes for all.



New Frameworks