



S. 328, Sec. 6 Service Supported Housing Advisory Council

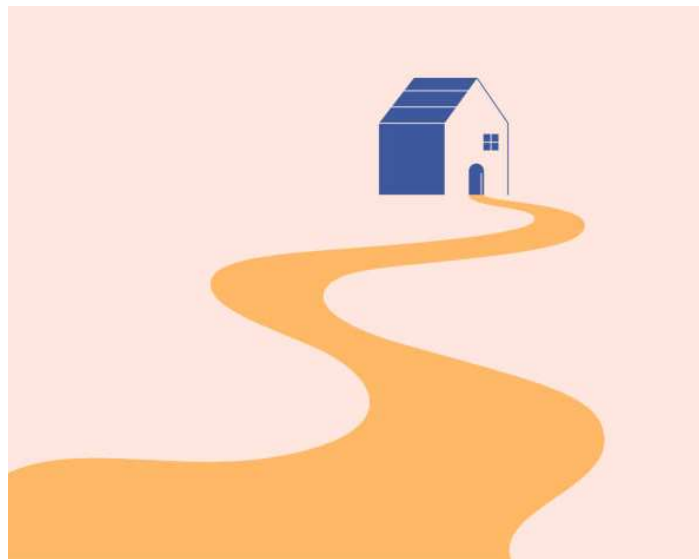
House General and Housing
April 1, 2026
Kirsten Murphy, Executive Director,
VT Developmental Disabilities
Council

1

“The Road Home”

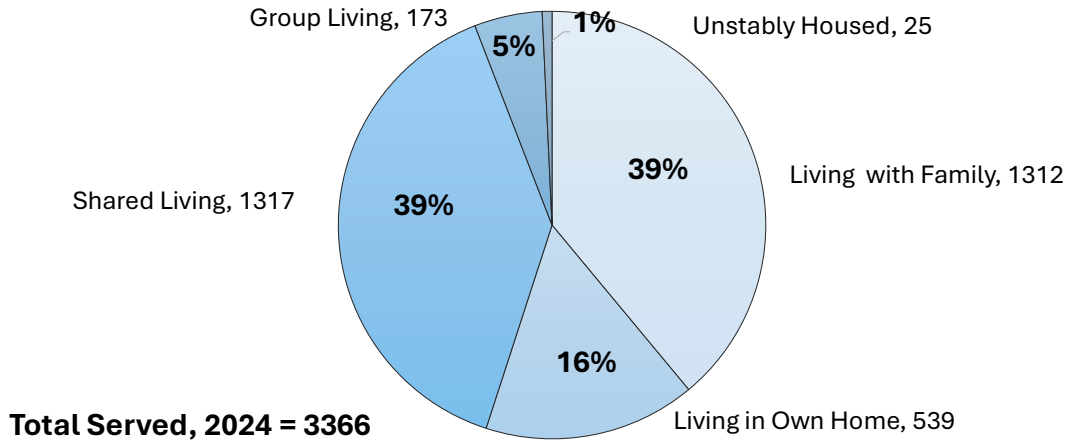
A 13-point plan for increasing permanent, affordable, and service-supported housing for people receiving Developmental Disabilities Services (DDS).

The Service Supported Housing Advisory Council is part of how we get there.



2

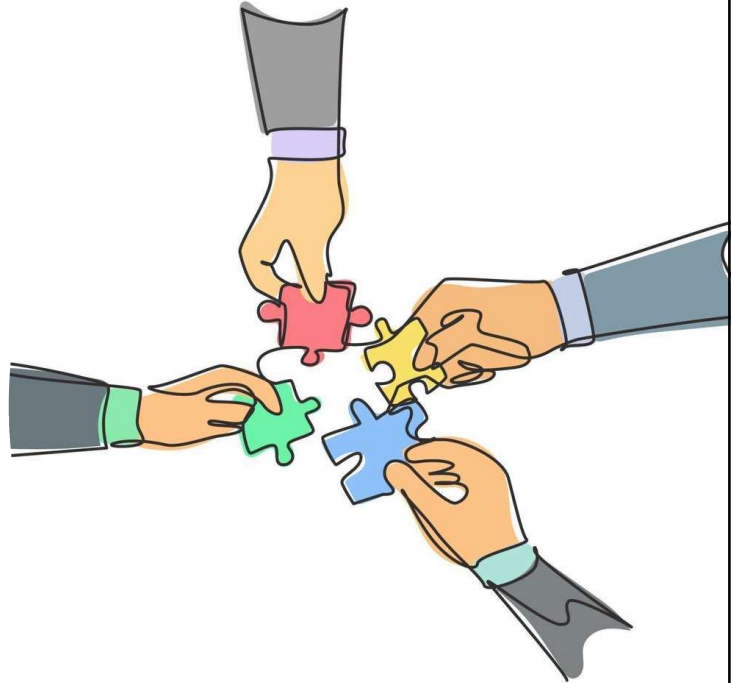
The problem we are trying to fix



3

Purpose

Identifying opportunities for increased alignment between human services programs and policies serving individuals who receive Medicaid funded Developmental Disability Services and housing capital and support services programs.



4

11 member Advisory Council supported by DAIL

- Vermont Housing and Conservation Board
- Secretary of Human Services, or designee
- Commissioner of DAIL, or designee
- State Treasurer, or designee
- Commissioner of Housing and Community Development, or designee
- Executive Director, VT Developmental Disabilities Council
- Vermont Care Partners
- 2 members appointed by the Developmental Disabilities Housing Initiative
- 2 members appointed by Green Mountain Self-Advocates

5

Duties

Report annually to four committees of jurisdiction by Nov. 15.

- Administrative and programmatic reforms, including examples of new service supported housing.
- A needs assessment, including “a summary of the number of units and an overview of the types of housing needed to support this population.”
- Other activities.
- Recommendations for “future legislative action, including actionable recommendations for changes in State laws or policies that are obstacles to the creation of housing needed by individuals with Medicaid-funded home- and community-based services.

6

Why do we need this Advisory Council?



- **Problem is urgent:**

78% of residential settings for this group use our most unsustainable models.

- **Stepping Out of Silos:**

Puts decision-makers and stakeholders together who do not usually problem-solve together.

- **Coordinated Leadership:**

The 13 recommendations in *The Road Home* must work together to be successful. They cut across many government entities and contractors.

- **Accountability to the legislature:**

The legislature sustained investment should be paired with direct accountability.

7



Sustain momentum....
And sunset when the work is done.

8