



**VERMONT
TRAILS & GREENWAYS
COUNCIL**



**Professional
TrailBuilders**
ASSOCIATION



MARIAH KEAGY

TRAIL PLANNER/DESIGNER, CO-OWNER, SINUOSITY LLC

VERMONT TRAILS AND GREENWAYS COUNCIL



**VERMONT
TRAILS & GREENWAYS
COUNCIL**

Our Impact

Since 1989, the Vermont Trails and Greenways Council has worked with trail stewards, communities, legislators, and a broad range of local and national partners to strengthen and expand Vermont's trail network. Our 50+ member organizations reflect Vermont's enduring commitment to outstanding trail stewardship. Together, we represent:

50,000

Individual trail
organization members

7,750

Miles of
trails

100,000

Hours of volunteer time
logged annually

50,000

Jobs supported
statewide

A photograph of a forest scene. In the foreground, there is a dense field of green ferns. Several large, mature trees with thick, dark trunks are scattered throughout the scene. One prominent tree on the right has a thick trunk that curves slightly. The background is filled with more trees, some with green leaves and others with yellowing leaves, suggesting an autumn setting. The sky is visible through the canopy of the trees.

High Quality Trails connect people to nature, while minimizing the impacts to the nature they are there to enjoy



High Quality = Sustainable

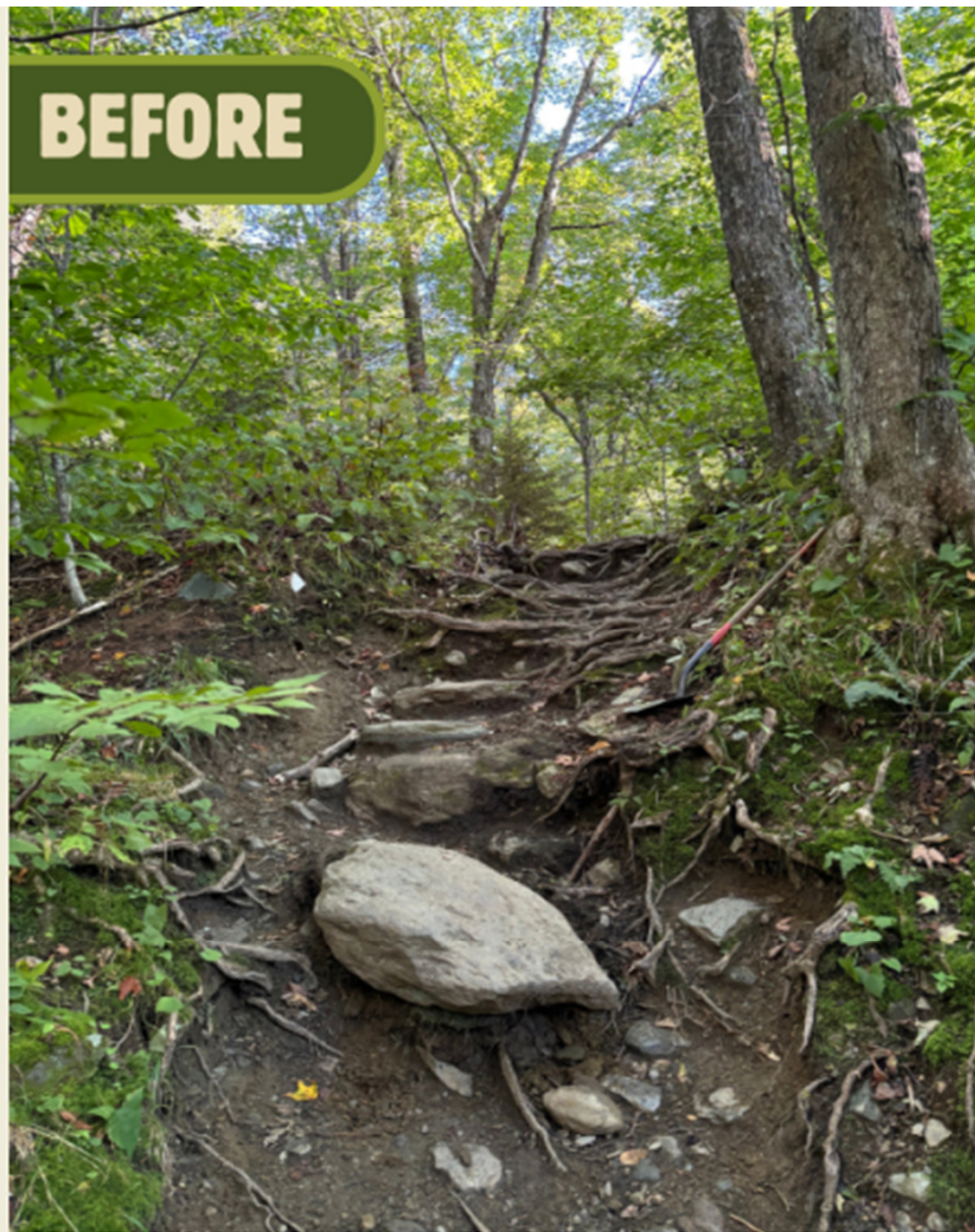


Vermont's Legacy Trail Systems



Legacy Trails & Reconstruction

BEFORE

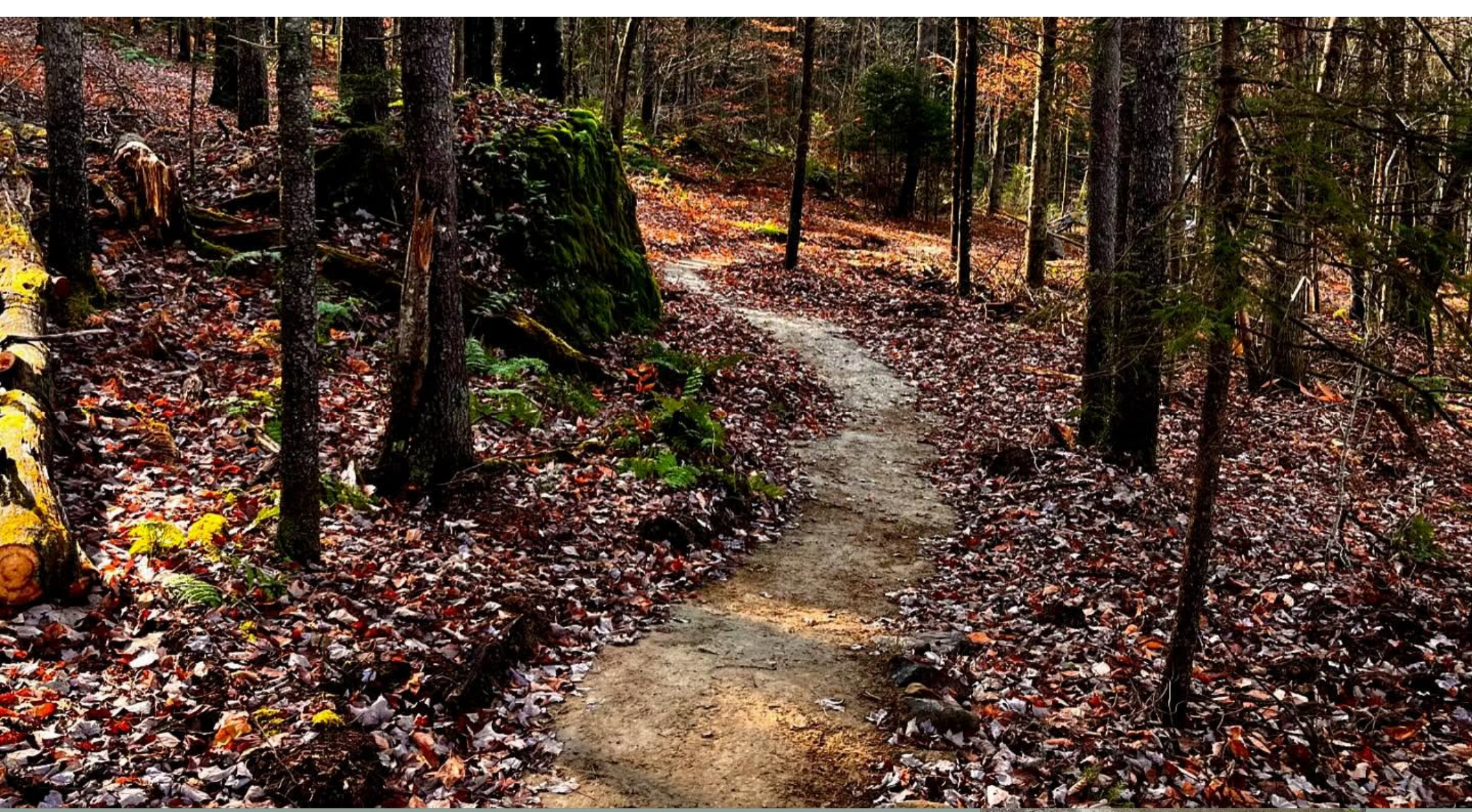


AFTER

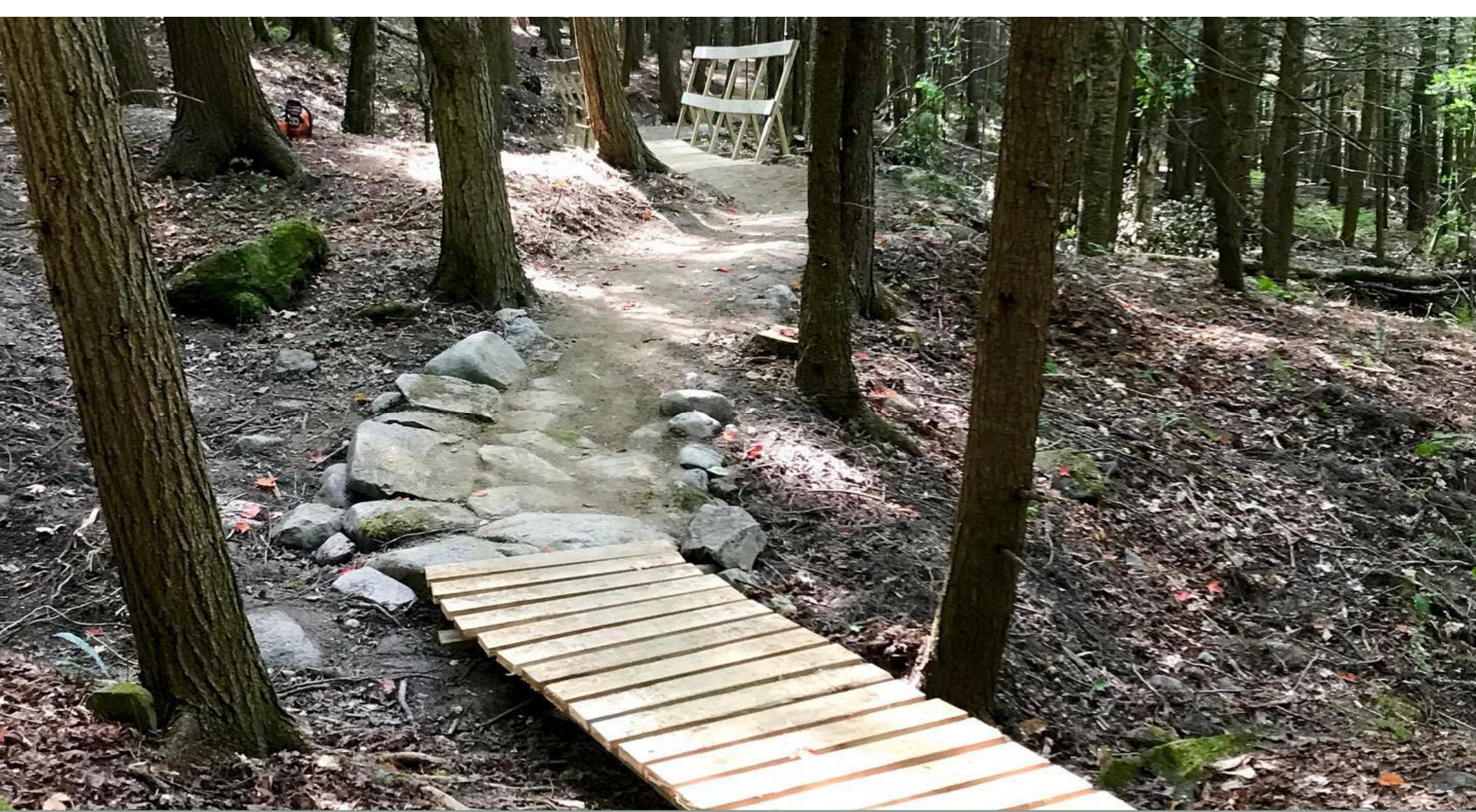


Boroughs Trail Reconstruction Project
(Camel's Hump)





Using what we now know to do it right
the first time



Investing by planning for the future



Maintenance protects our trail infrastructure, old and new

Protecting our Trails by Training Trail Professionals



Vermont Outdoor
Business Alliance

Why is good drainage so important for trails (and especially for those in VT)?



Vermont Outdoor
Business Alliance

What happens when we get it wrong?



Key Concepts

- Drainage is vital for trails in VT, and increasingly so due to climate change.
- Not planning for drainage damages trails and the surrounding environment.

- Effective drainage accounts for soil type and trail watershed- and considers on and off trail factors.
- Principles of sheet flow vs. channeling.

- Type of drainage features and their applications.
- The same drainage concepts apply to new trail construction as existing trails.

Thank you

