

Trust for Public Land

Kate Wanner
Vermont Conservation Director



Connecting everyone to the outdoors™

We are

CONNECTING EVERYONE TO THE OUTDOORS.

Our mission is to create parks and protect land for people, ensuring healthy, livable communities for generations to come.

Access to the outdoors is a fundamental human need and essential to our health and well-being.

Communities that place a high value on outdoor access for all are **healthier, more resilient and more equitable.**



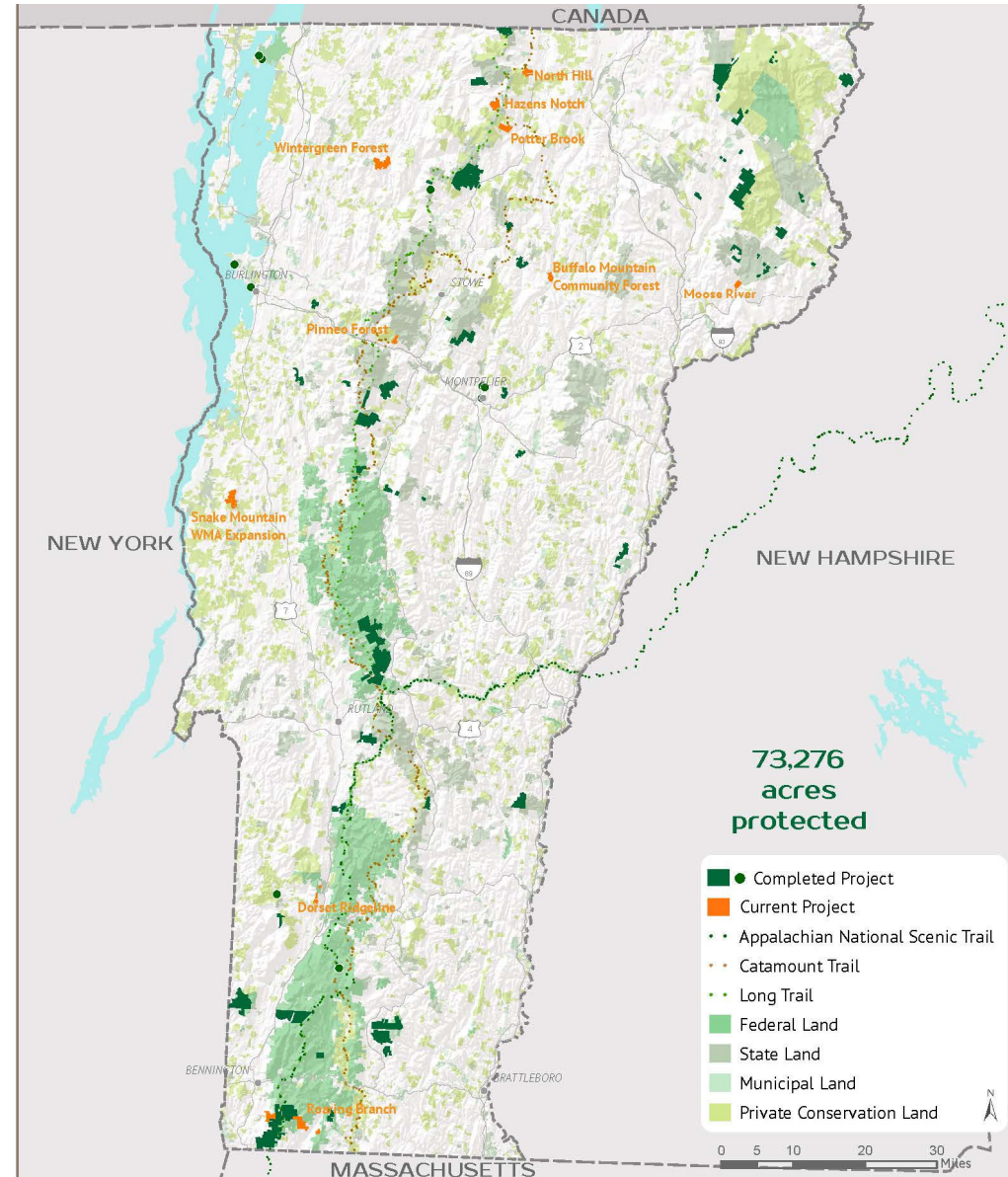
In Vermont, we have

Protected or made possible 220 miles of trails and more than 73,000 acres of publicly accessible lands

- ✓ 10 miles - Long Trail
- ✓ 9 miles – Catamount Trail
- ✓ 80 miles – VAST trails
- ✓ 142 miles – Community trails
- ✓ 3 miles of Velomont Trail and forthcoming South Pond Backcountry Hut

Force behind some iconic protected lands:

- ✓ Burlington Waterfront
- ✓ Barre Town Forest @ Millstone Trails
- ✓ Blueberry Lake addition to GMNF
- ✓ Ascutney Mountain
- ✓ Catamount Community Forest
- ✓ Rolston Rest addition to GMNF

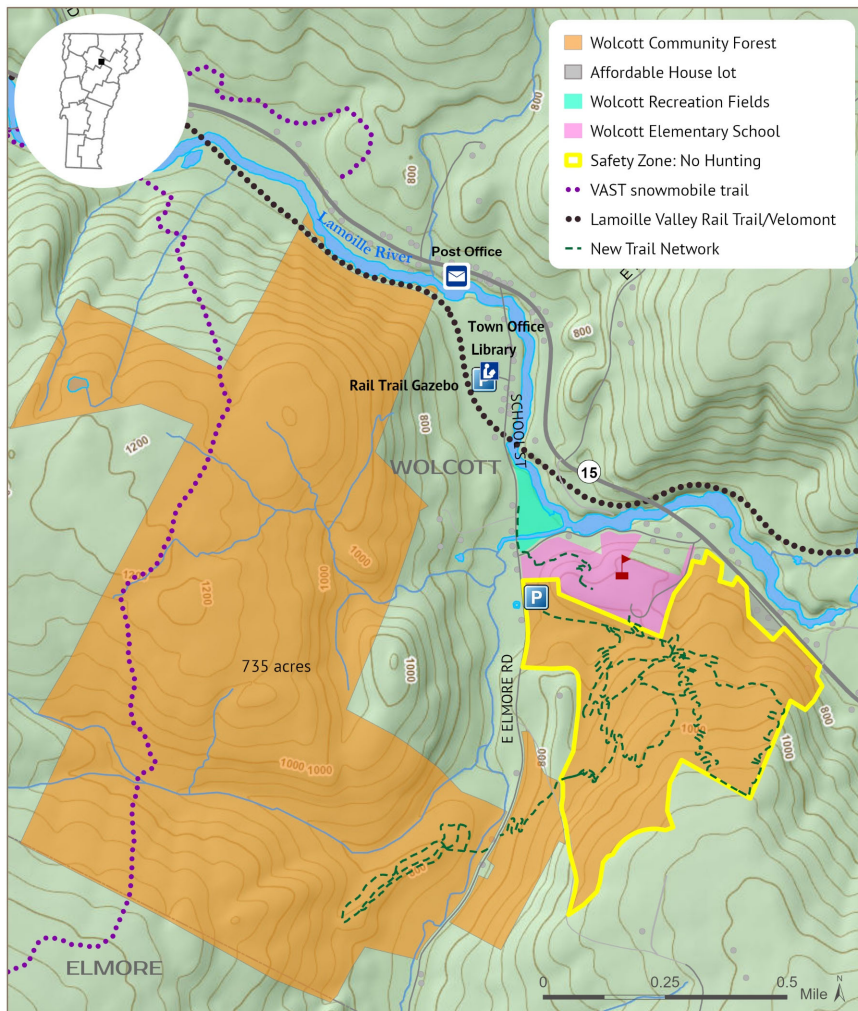




In Vermont:

- Vermont **loses 10-12,000 acres** of intact forestland a year – the basis of both ecological health, climate resiliency and canvas of outdoor recreation.
- **63%** of Vermont's conserved land provides public access, compared with 87% in NH and Maine.
- **More than 1 out of every 5** Vermonters, including **31,000 kids**, lack close to home access to the outdoors*
- **43%** of Vermont's K-12 schools lack walkable off campus park or open space
 - *But if you are low income or live in a community that suffers from poor mental health, you are **roughly 1.5x less likely** to have walkable park and open space access near local schools.*

* further than a 10-minute drive to permanently protected park or open space of 1 acre or more



Wolcott Community Forest

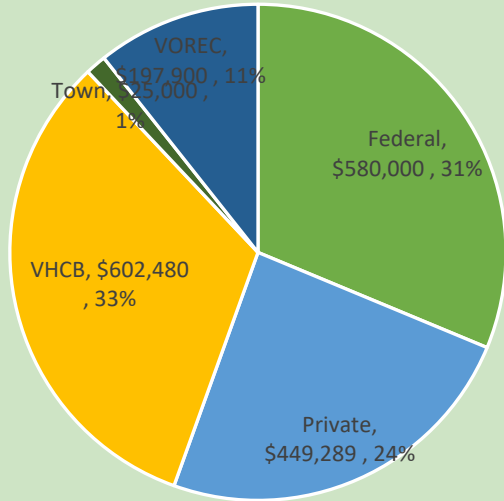
Wolcott, VT

August 15, 2025. Copyright © Trust for Public Land. Trust for Public Land and Trust for Public Land logo are federally registered marks of Trust for Public Land. Information on this map is provided for purposes of discussion and visualization only.
www.tpl.org



Wolcott Community Forest

- Desire for new close-to-home recreation opportunities was one of the drivers for the creation of Wolcott Community Forest
- Conservation, Recreation, Affordable Housing and Workforce Development all in one project



■ Federal ■ Private ■ VHCB ■ Town ■ VOREC





- Secured \$198k in State recreation funding (FY22 VOREC)
- Public trail planning process in 2022/2023
 - ✓ 5 miles of trail
 - ✓ 8-10 car parking lot
 - ✓ Trailhead kiosks, wayfinding signs
 - ✓ Trail connection to Lamoille Valley Rail Trail, Elementary School, Village Center
- Construction of the trail network in 2024/2025 – built by local trail builder Sinuosity
- Ribbon cutting and grand opening celebration Sept. 2025



Community building through Community Forests

- Guided snowshoe outings
- New programming at Wolcott Elementary School: Wednesdays in the Woods: Art, Music & Science!
- Rescue training on trail network by Elmore, Hardwick and Wolcott Fire Departments
- Force main and pumpstation for new community wastewater system
- Pending donation of affordable house lot to Green Mountain Habitat for Humanity

Takeaways....

- Conservation and outdoor recreation are deeply intertwined
- Outdoor rec assets – trails, hunting and wildlife areas, waterfronts - frequently drive conservation priorities, and can help us achieve Act 59's conservation goals
- Our landscape is rapidly transforming, with impacts to the availability and dependability of outdoor recreation opportunities
- Stable consistent funding for conservation (VHCB) **AND** recreation (VOREC) are needed to support the pillars of Vermont's economy and quality of life

Invest in Conservation, Recreation & Accessibility