

NORTHEAST



WILDERNESS
TRUST

Protecting the Wild

*Northeast Wilderness Trust and the case for
wildlands conservation in Vermont.*

Shelby Perry
Wildlands Ecology Director
Northeast Wilderness Trust

Woodbury Mountain Wilderness Preserve Photo © Jerry Monkman

Agenda:



Introduction to NEWT



Wildlands and Old Forests



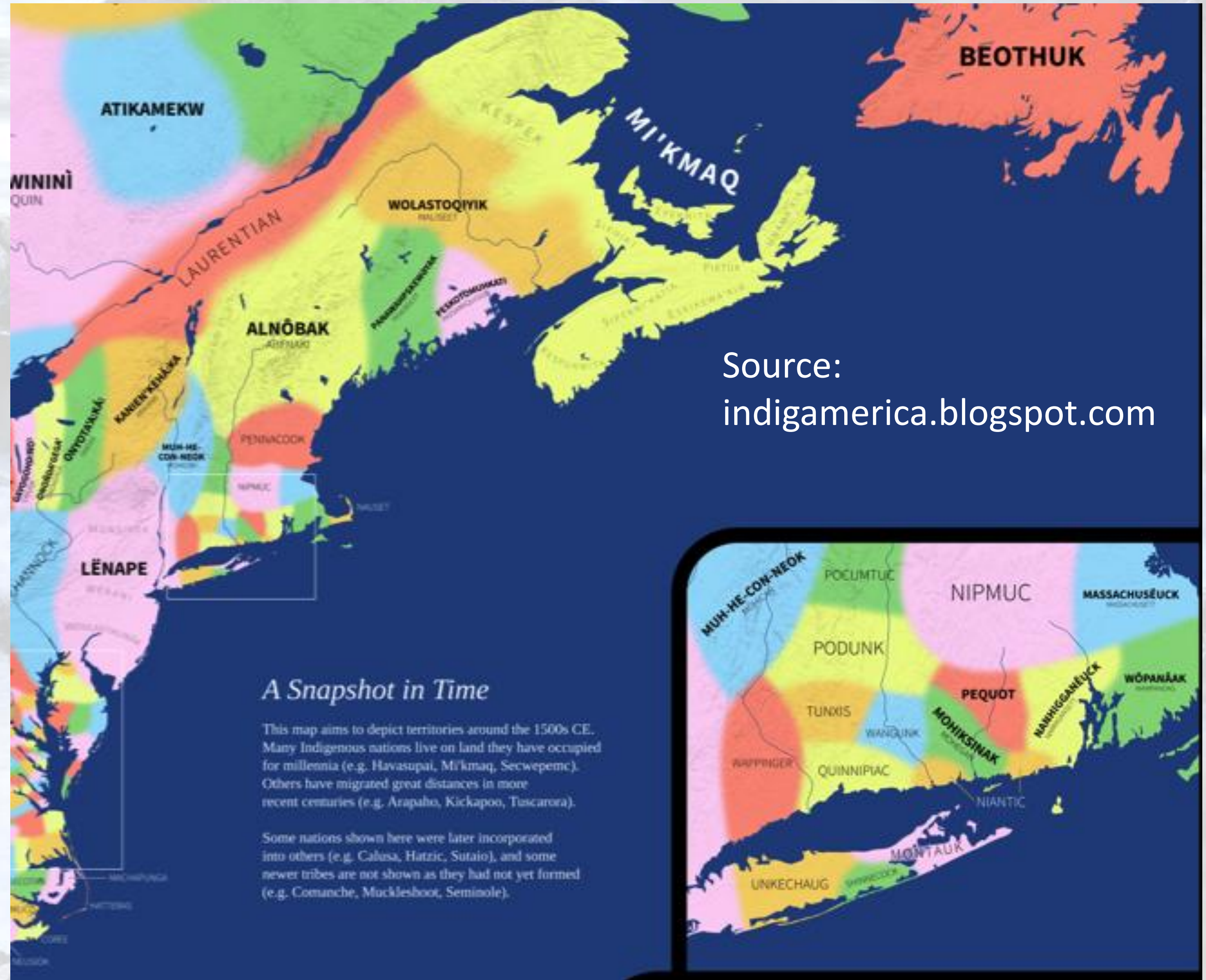
Ecological Representation of Wildlands



The role of Private Lands



Introduction to NEWT



Source:
indigamerica.blogspot.com

A Snapshot in Time

This map aims to depict territories around the 1500s CE. Many Indigenous nations live on land they have occupied for millennia (e.g. Havasupai, Mi'kmaq, Secwepemc). Others have migrated great distances in more recent centuries (e.g. Arapaho, Kickapoo, Tuscarora).

Some nations shown here were later incorporated into others (e.g. Calusa, Hatzic, Sutaio), and some newer tribes are not shown as they had not yet formed (e.g. Comanche, Mucklesboot, Seminole).





Introduction to NEWT





Introduction to NEWT





Introduction to NEWT

“Wilderness is not a special kind of place, but rather a special commitment we can make to any place.”

-Daryl Burtnett, former ED of Northeast Wilderness Trust



NORTHEAST



WILDERNESS
TRUST

Northeast Wilderness Trust

*Mission: Protecting Forever Wild Landscapes for
Nature and People*

We envision a landscape of connected, resilient wildlands shared by a human culture that recognizes the benefits of wild places.



Introduction to NEWT

Agenda:



Introduction to NEWT



Wildlands and Old Forests



Ecological Representation of Wildlands



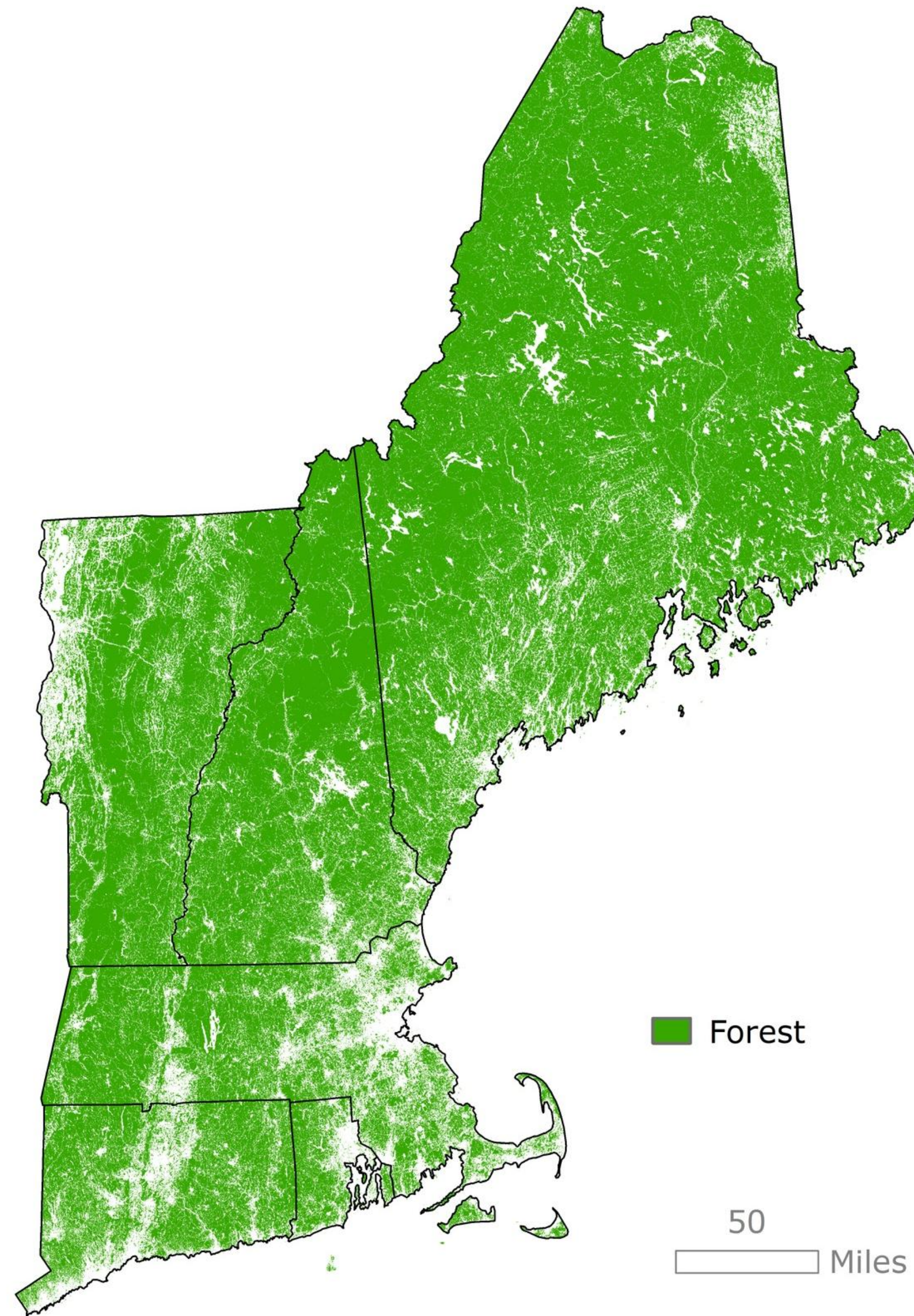
The role of Private Lands



Wildlands and Old Forests

81%

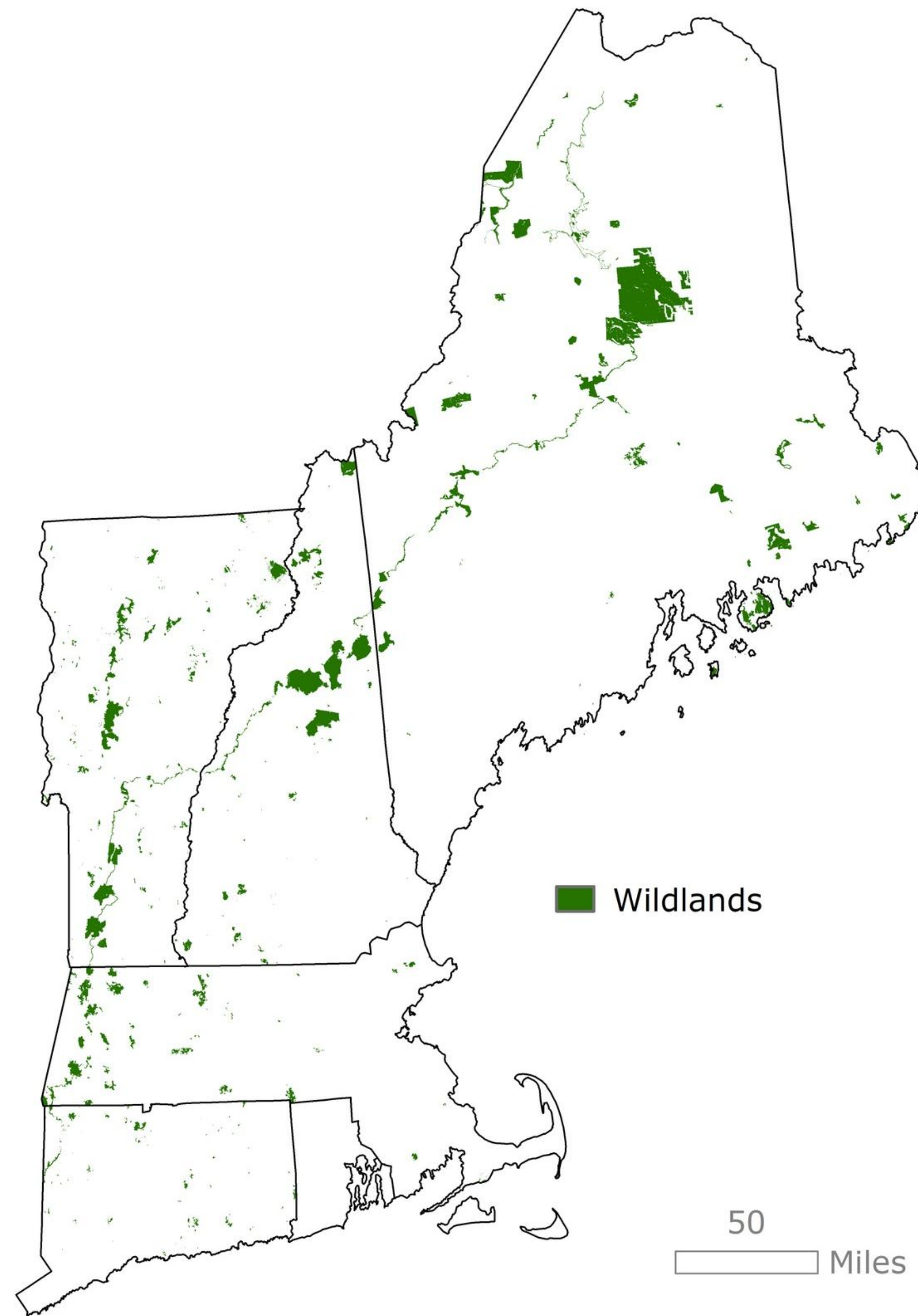
of New England is forest.





Wildlands and Old Forests

3.3%
is Wildlands.





Wildlands and Old
Forests

Wildlands vs. Old Forests





Wildlands and Old
Forests

Wildlands vs. Old Forests





Wildlands and Old Forests

Wildlands vs. Old Forests

3.7%

Of VT is protected
as Wildlands.



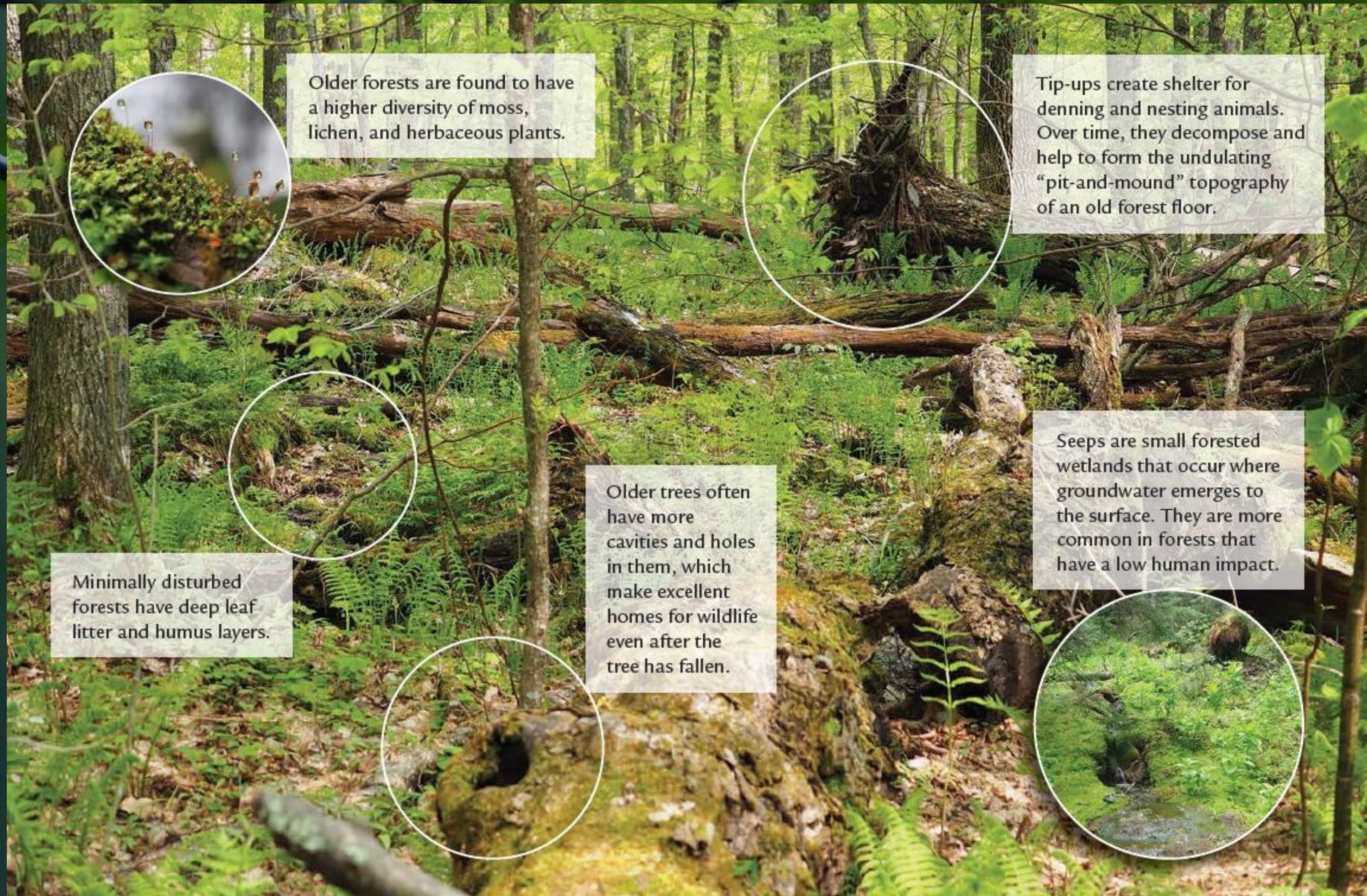
>0.5%

Of VT has the
characteristics of
old forest

%



Wildlands and Old Forests



Agenda:



Introduction to NEWT



Wildlands and Old Forests



Ecological Representation of Wildlands



The role of Private Lands



Ecological Representation of Wildlands

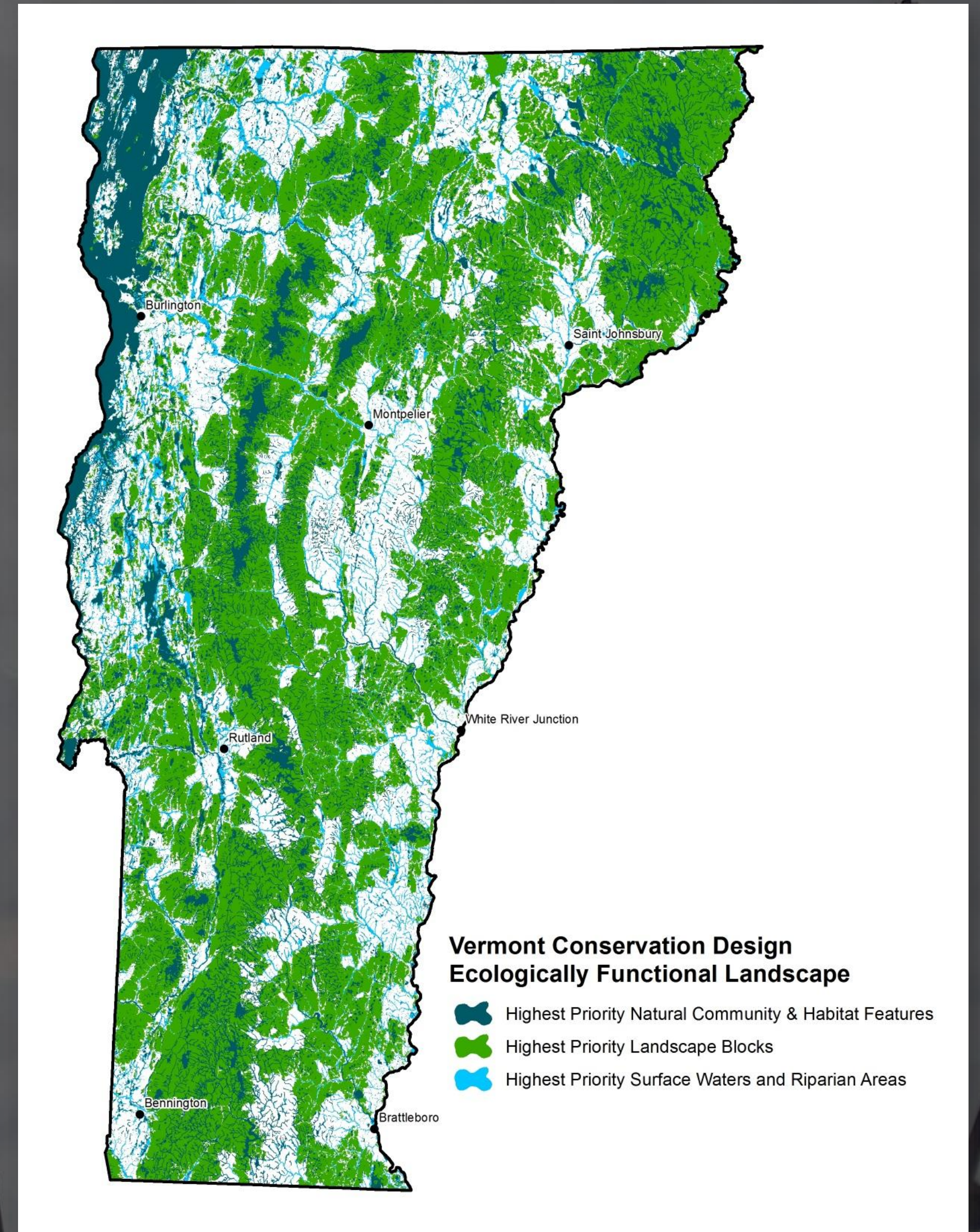
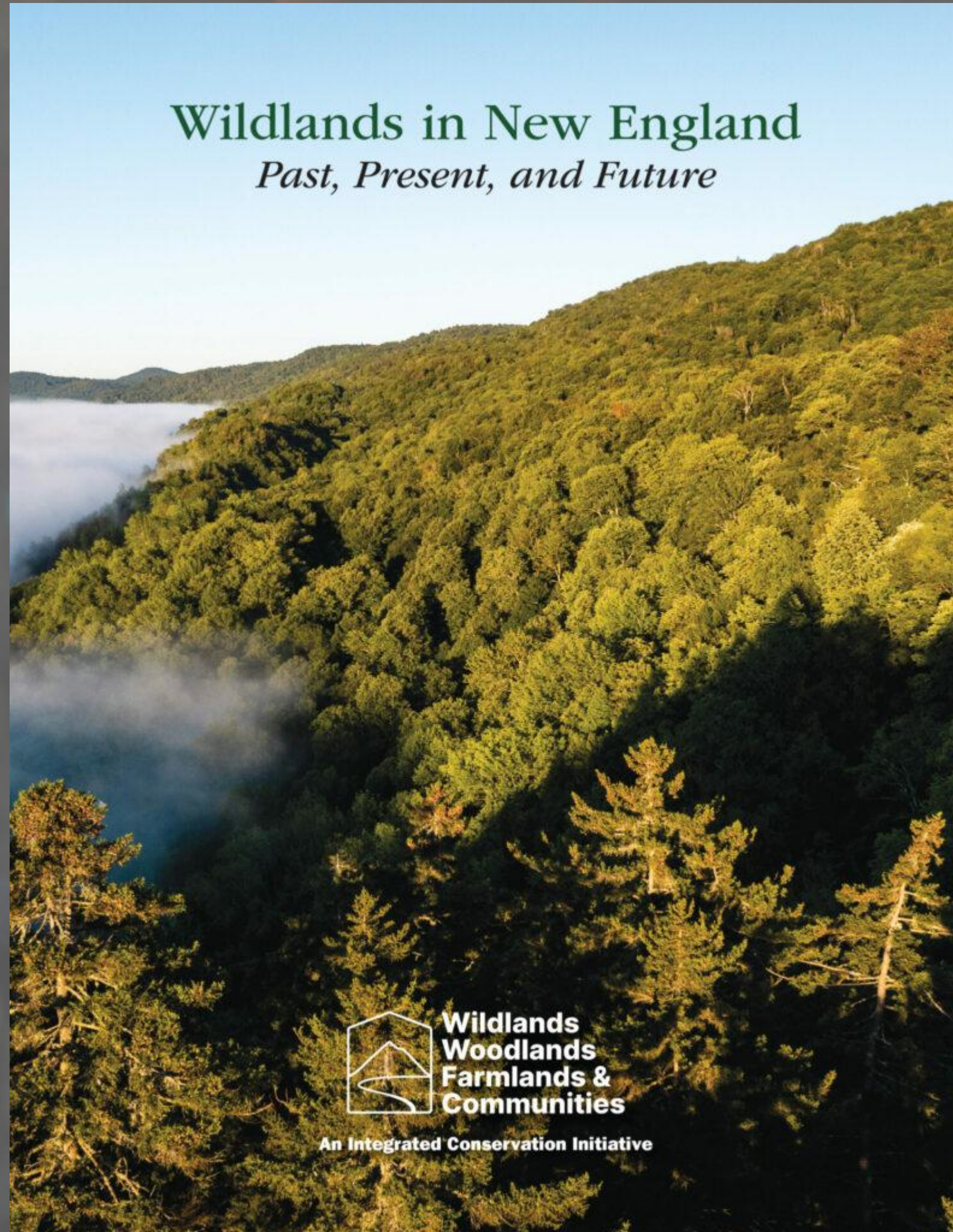
VCD

~10%



Wildlands Report

10%

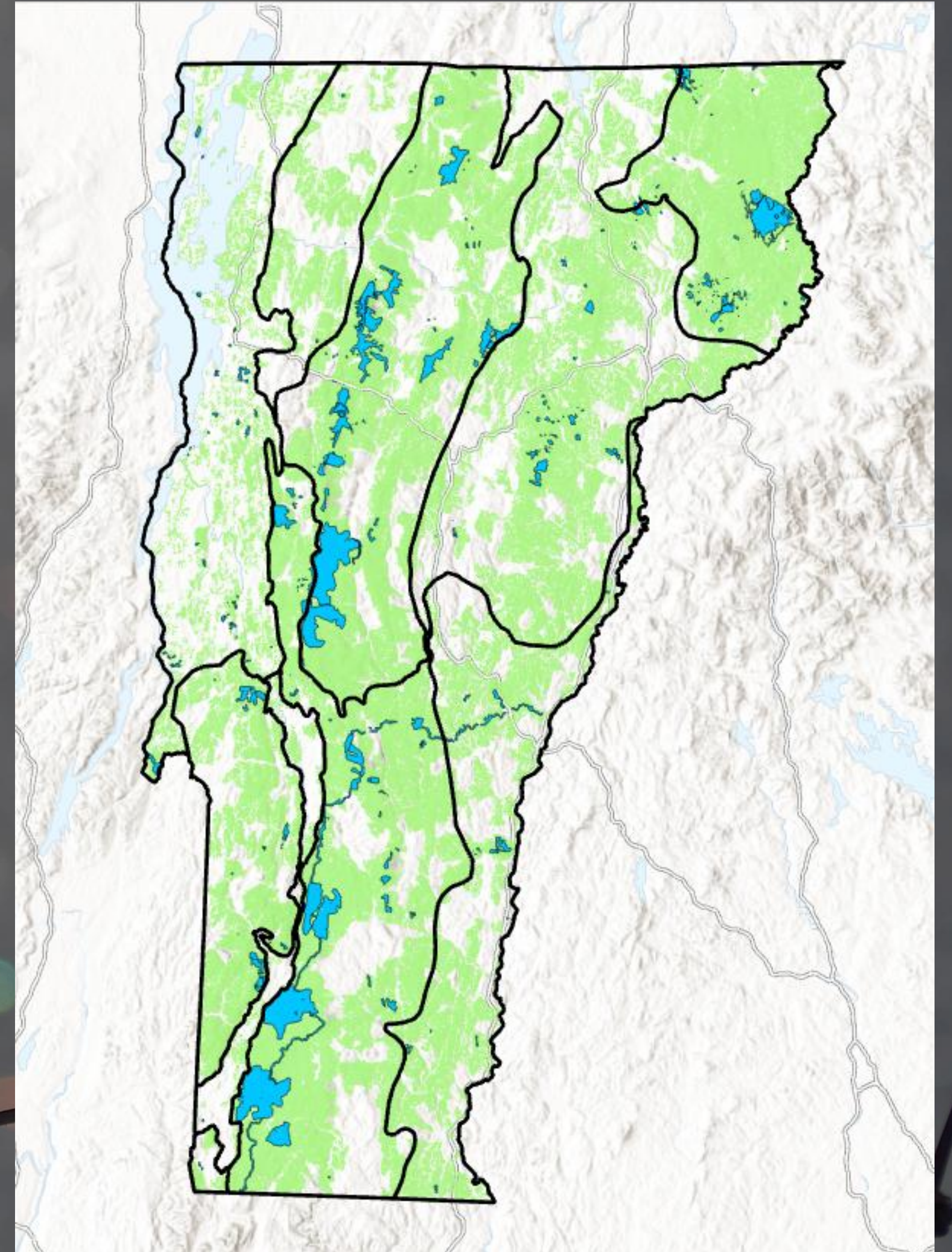




Ecological Representation of Wildlands

Target:

**15% of the Matrix
Forest within Highest
Priority Forest Blocks
in each Biophysical
Region**



Wildlands and the VCD Old Forest Targets

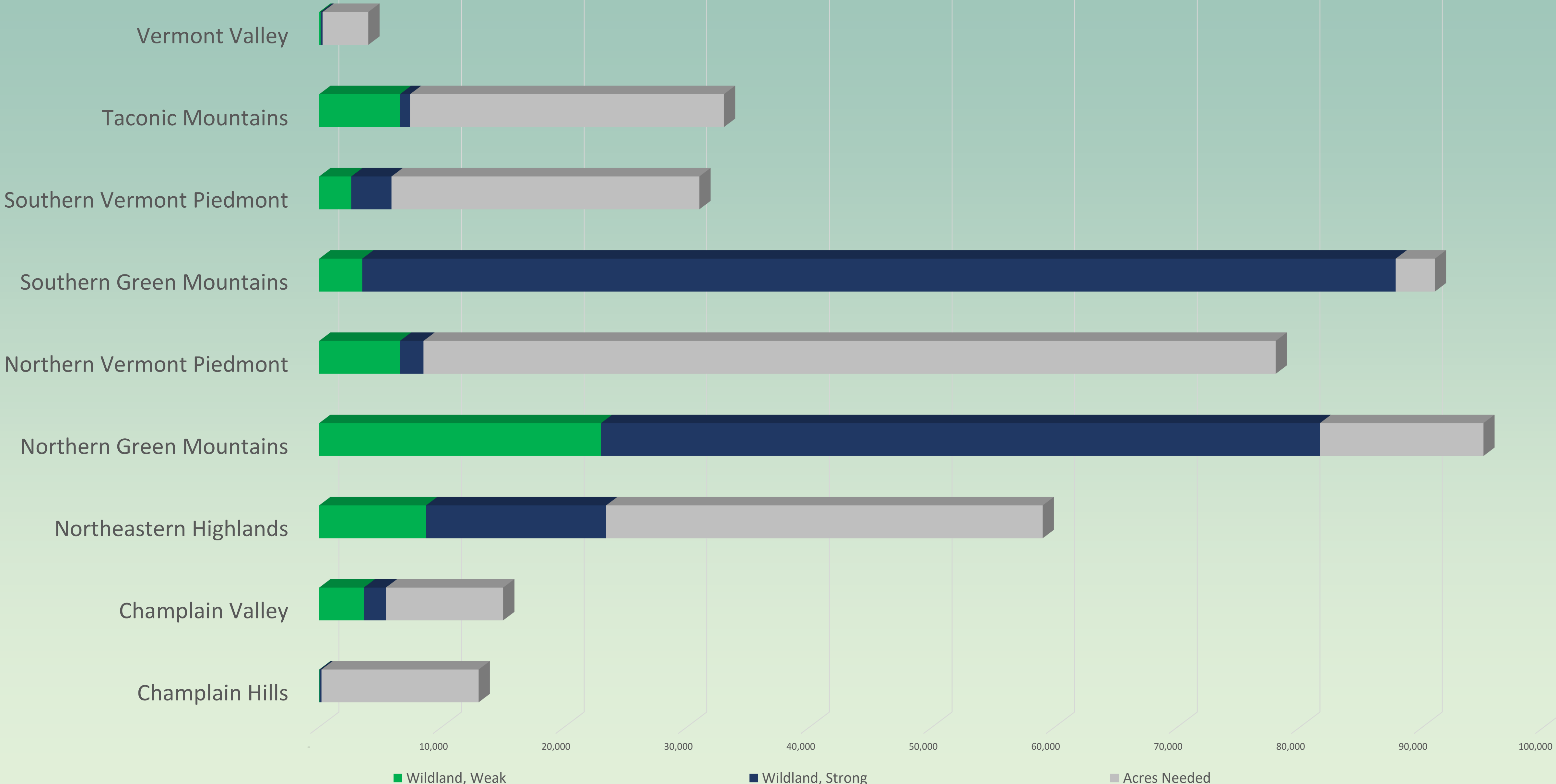


Chart courtesy of Robert Zaino, VT F&W

Wildlands and the VCD Old Forest Targets

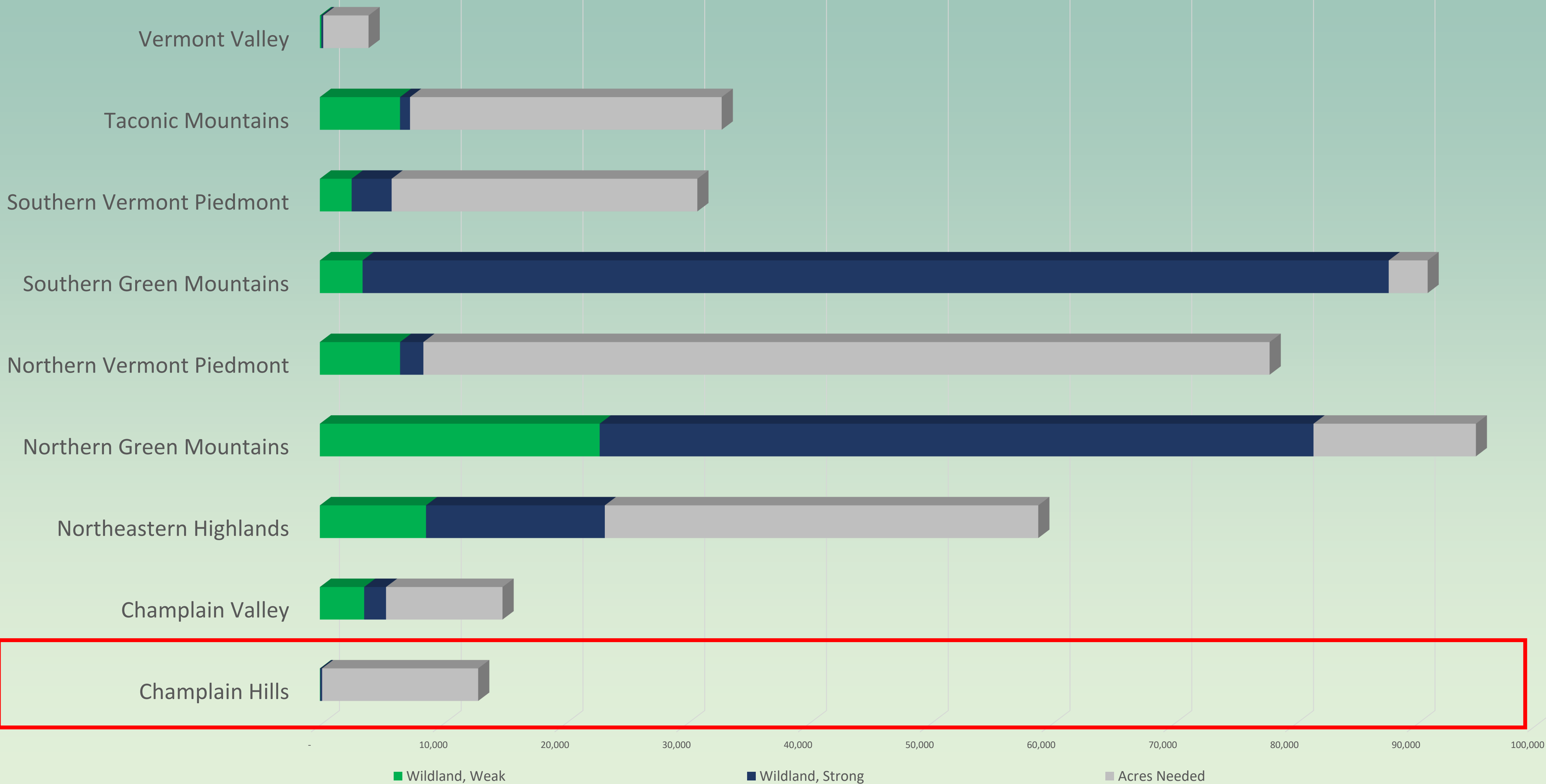


Chart courtesy of Robert Zaino, VT F&W

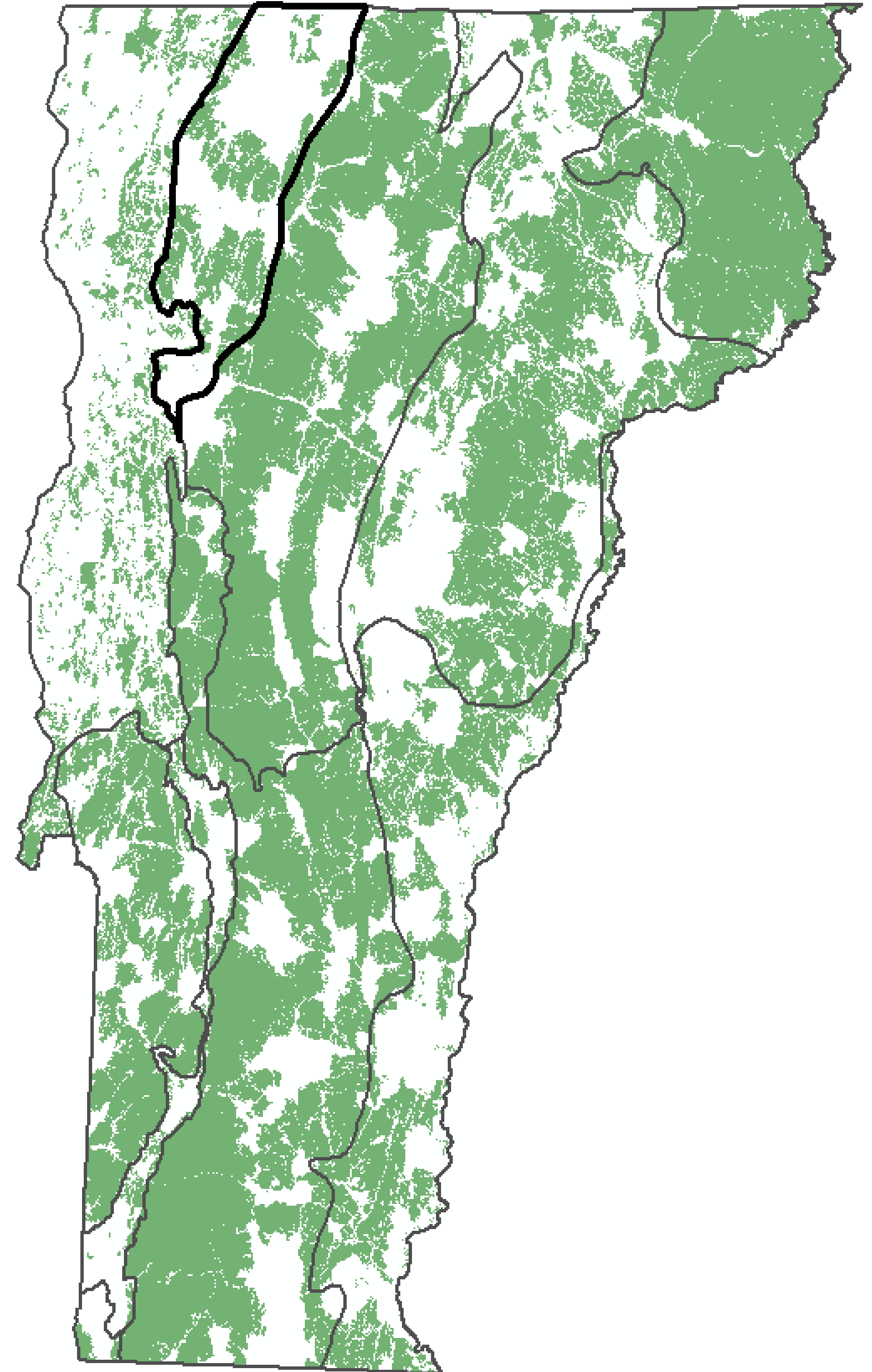


Ecological Representation of Wildlands

Champlain Hills

Vermont Conservation Design
old forest target: 13,000 acres

Acres of Wildlands: 184 (1.4%)

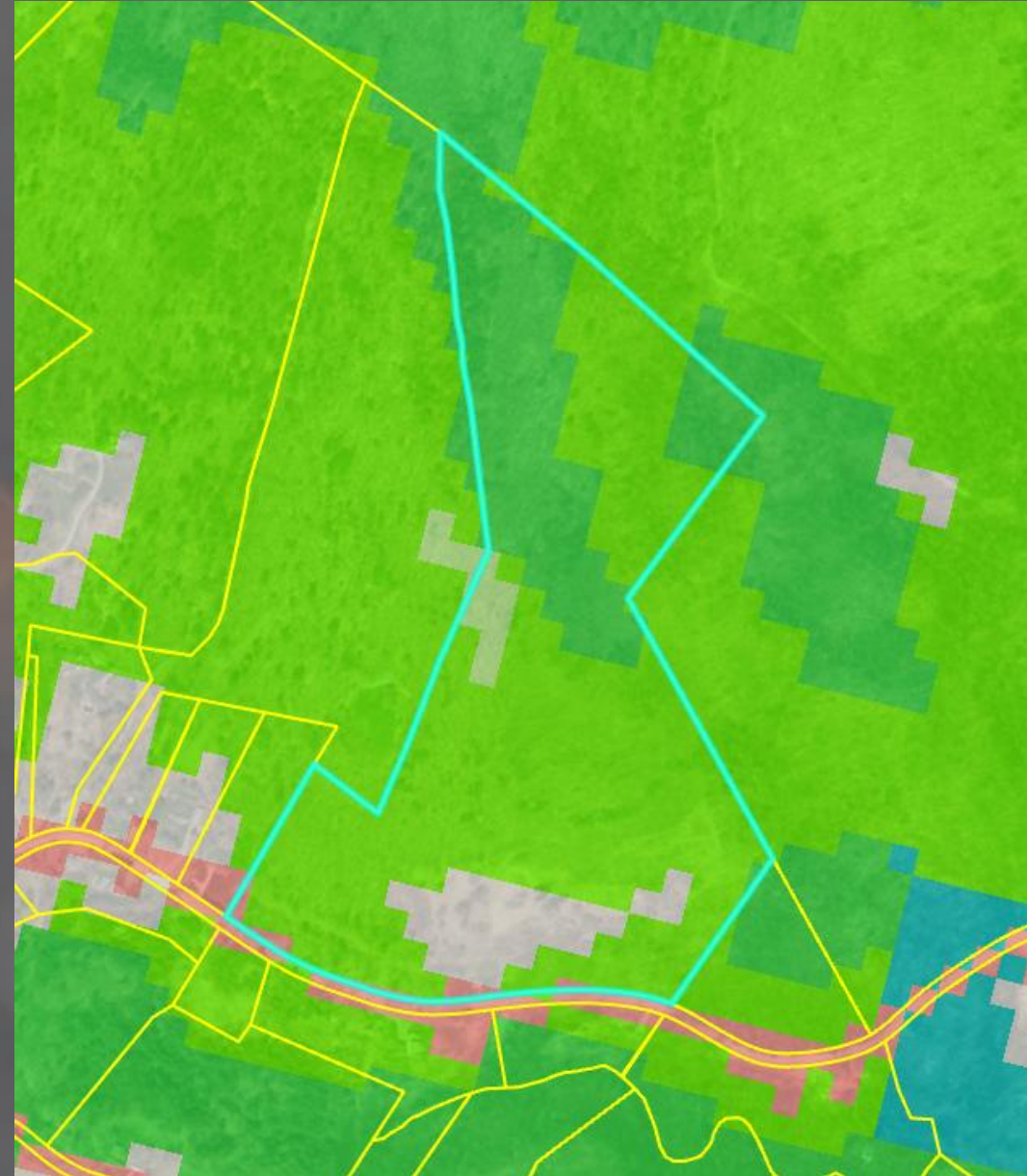




Ecological Representation of Wildlands

Champlain Hills

<i>Unprotected</i>	<i>206,653 acres</i>
<i>Protected, Not Wildland</i>	<i>28,886 acres</i>
<i>Wildland, Weak</i>	<i>24 acres</i>
<i>Wildland, Strong</i>	<i>161 acres</i>



NEWT Private Lands Easement



Lake Carmi Bog Natural Area

Wildlands and the VCD Old Forest Targets

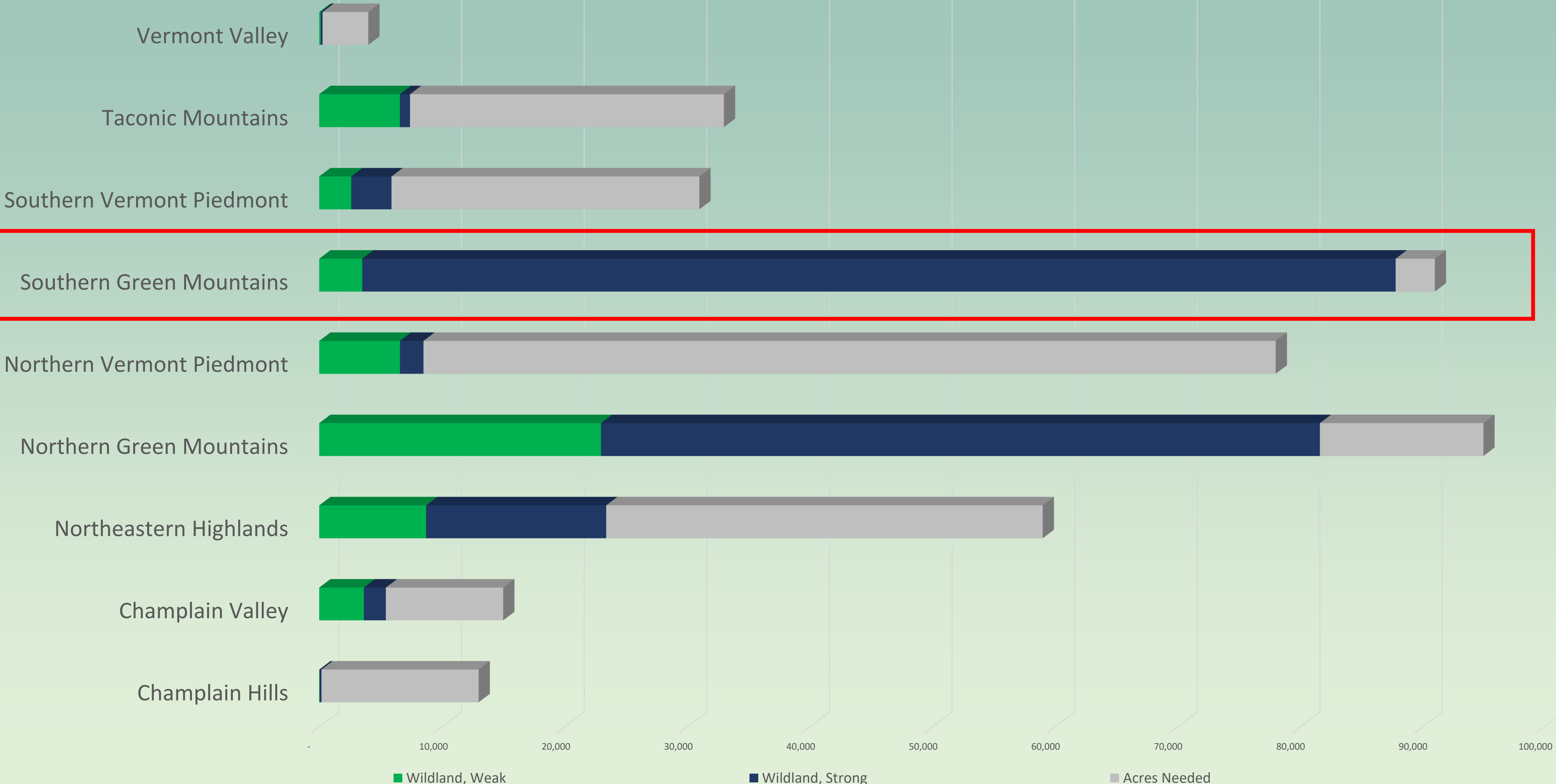


Chart courtesy of Robert Zaino, VT F&W



Ecological Representation of Wildlands

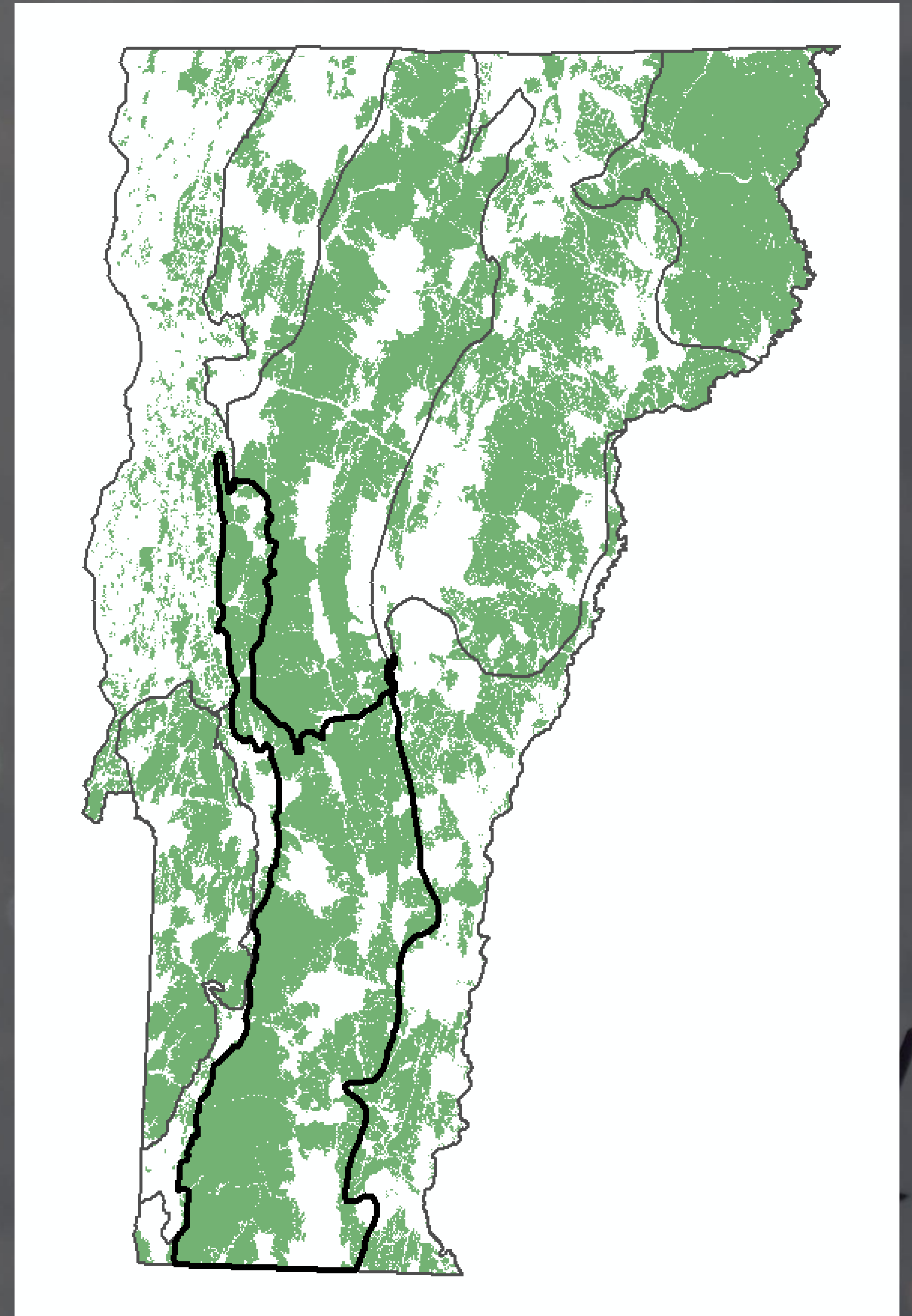
Southern Green Mountains

Vermont Conservation Design
old forest target:

91,000 acres

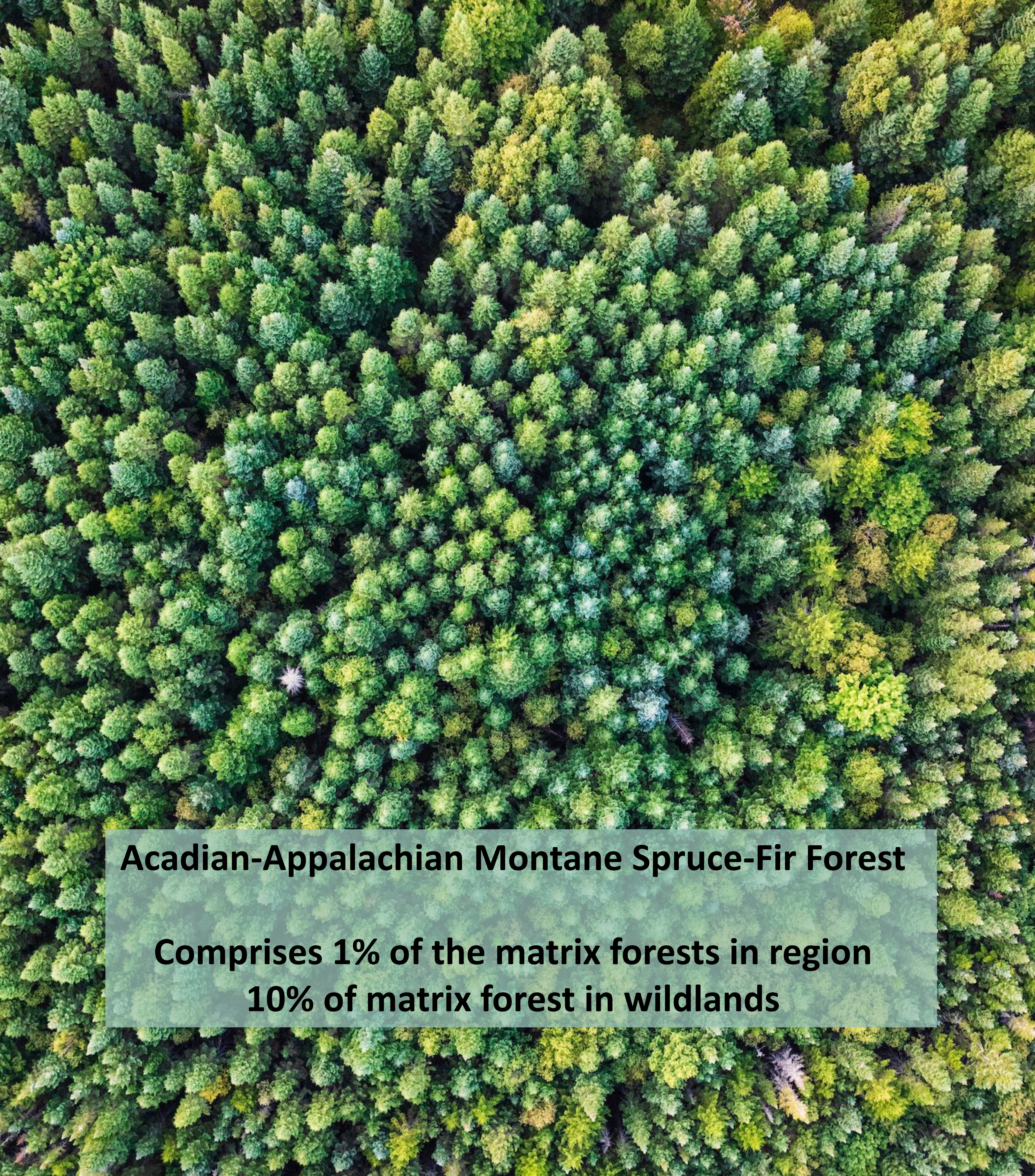
Acres of Wildlands:

87,780 acres (96%)



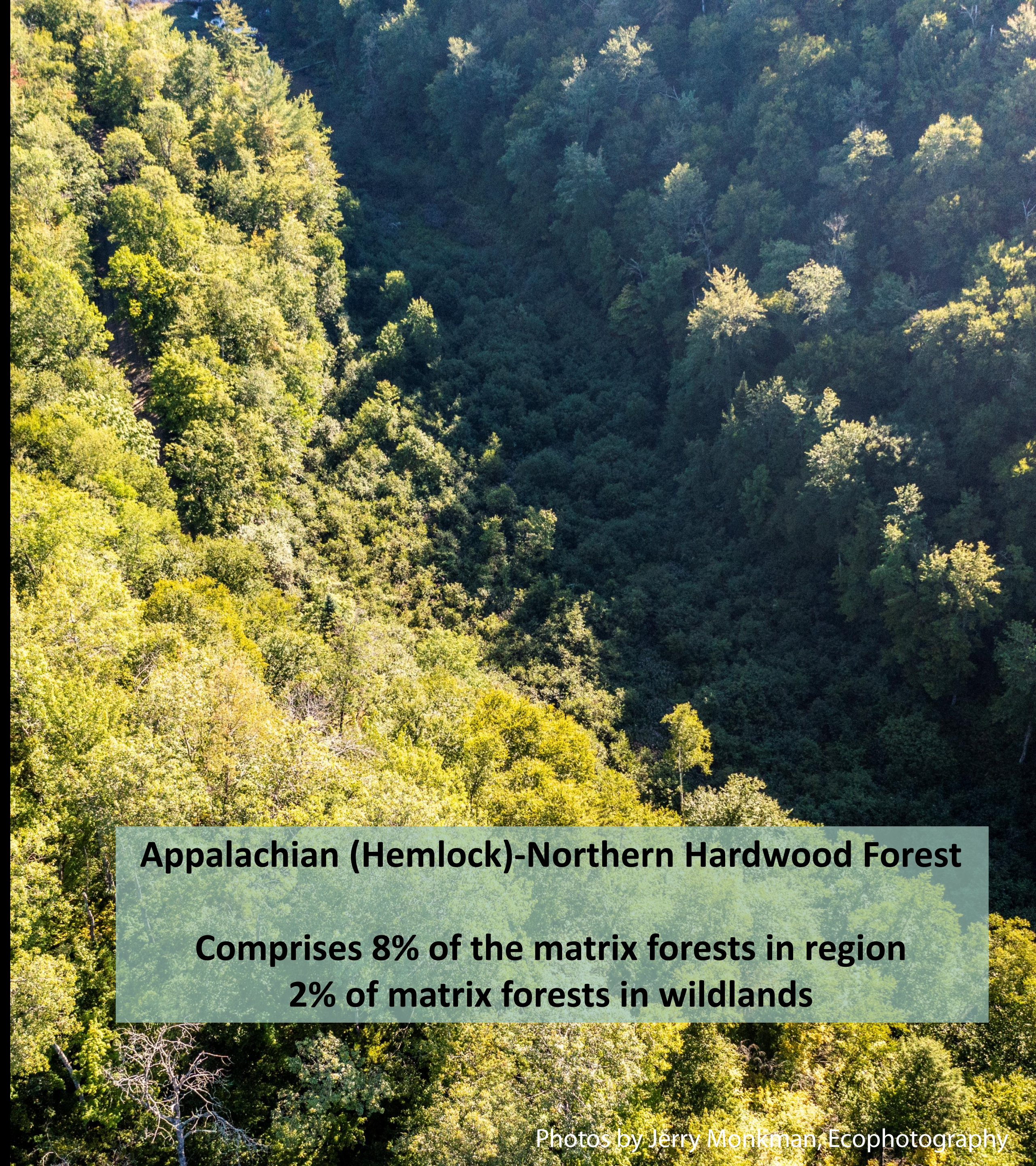
Representation of Matrix Forest Types – Southern Green Mountains Wildlands





Acadian-Appalachian Montane Spruce-Fir Forest

**Comprises 1% of the matrix forests in region
10% of matrix forest in wildlands**

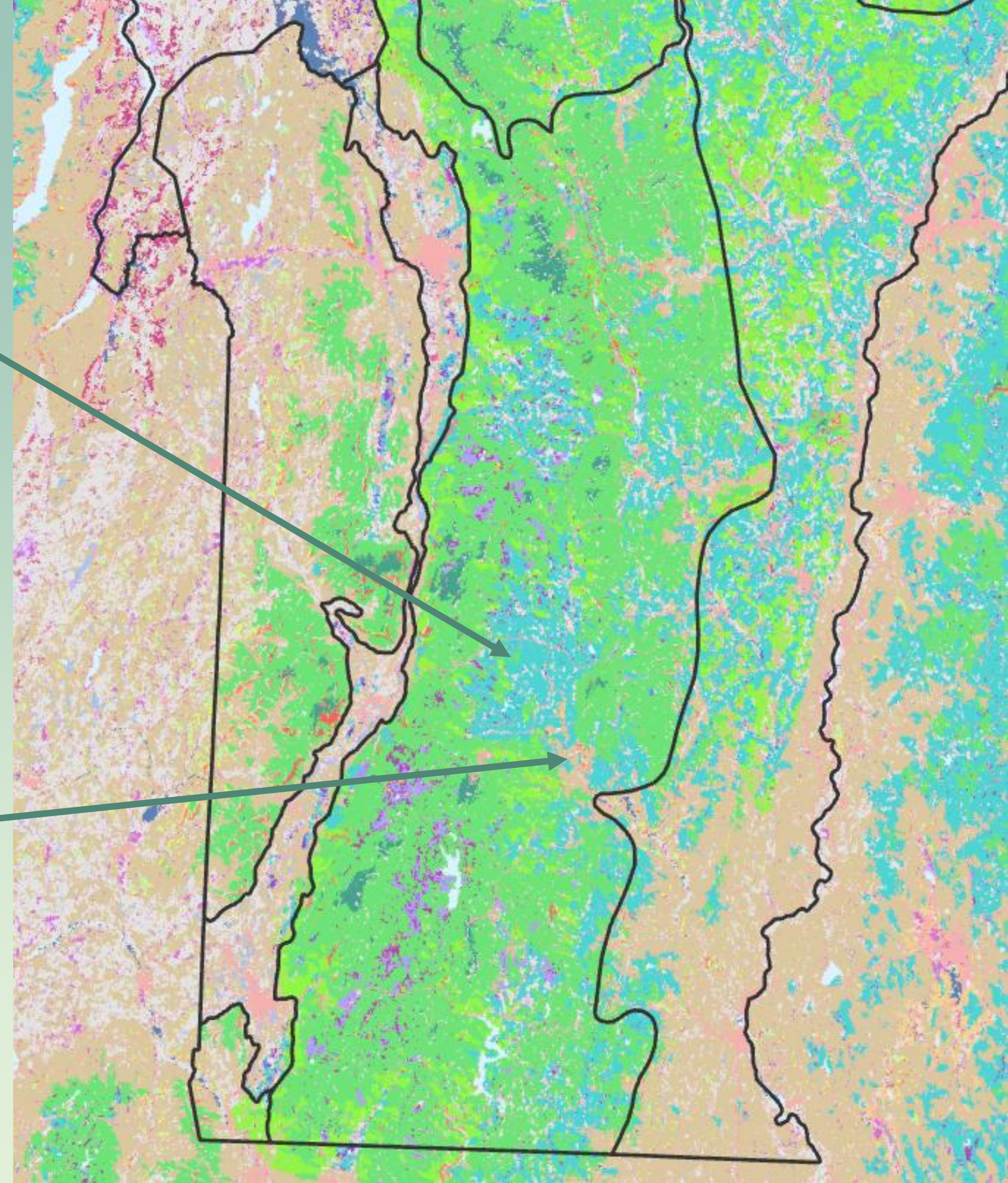


Appalachian (Hemlock)-Northern Hardwood Forest

**Comprises 8% of the matrix forests in region
2% of matrix forests in wildlands**

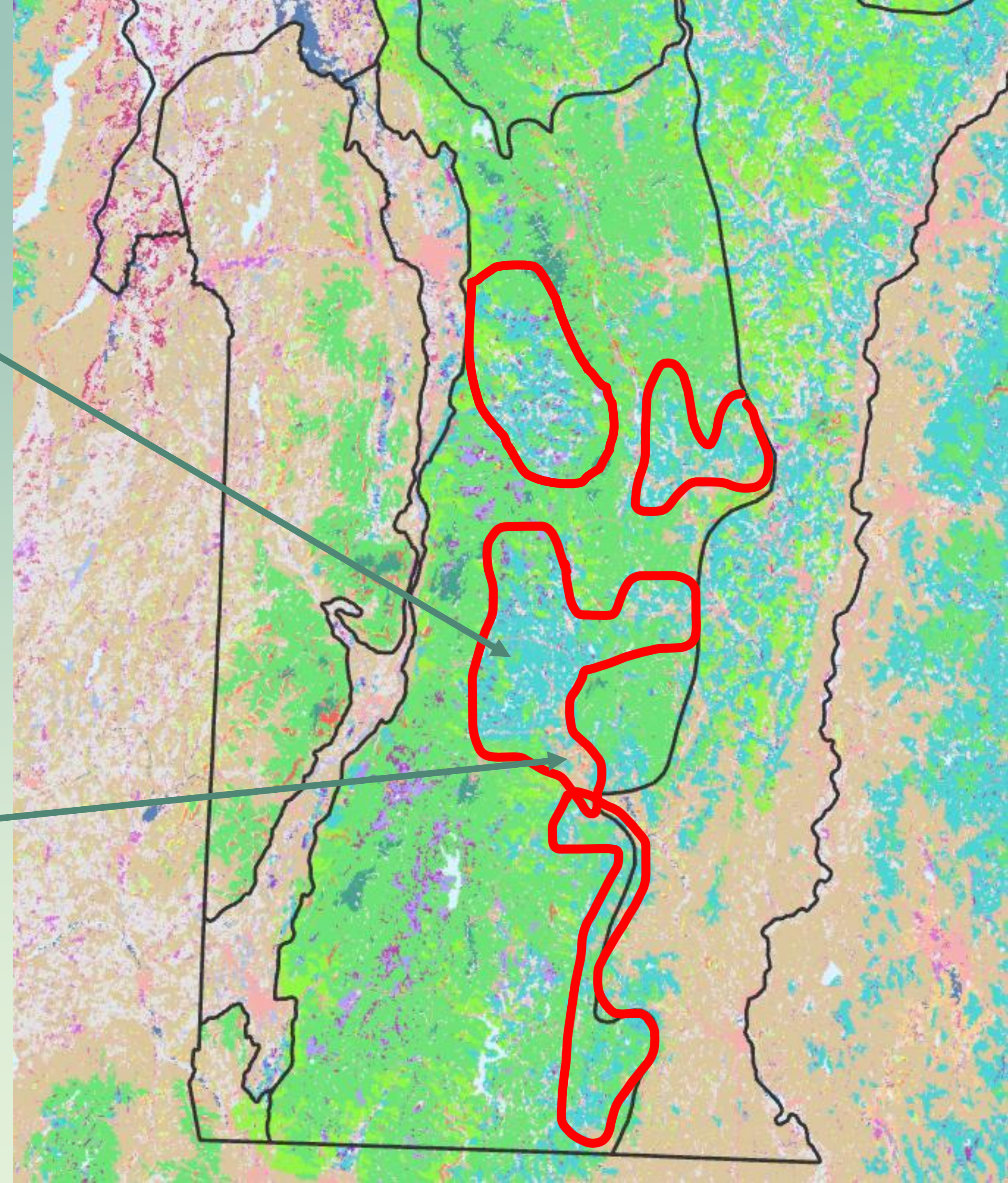
**Laurentian-Acadian Pine-
Hemlock-Hardwood Forest
(blue-green)**

**Appalachian (Hemlock)-
Northern Hardwood Forest
(brown-pink)**

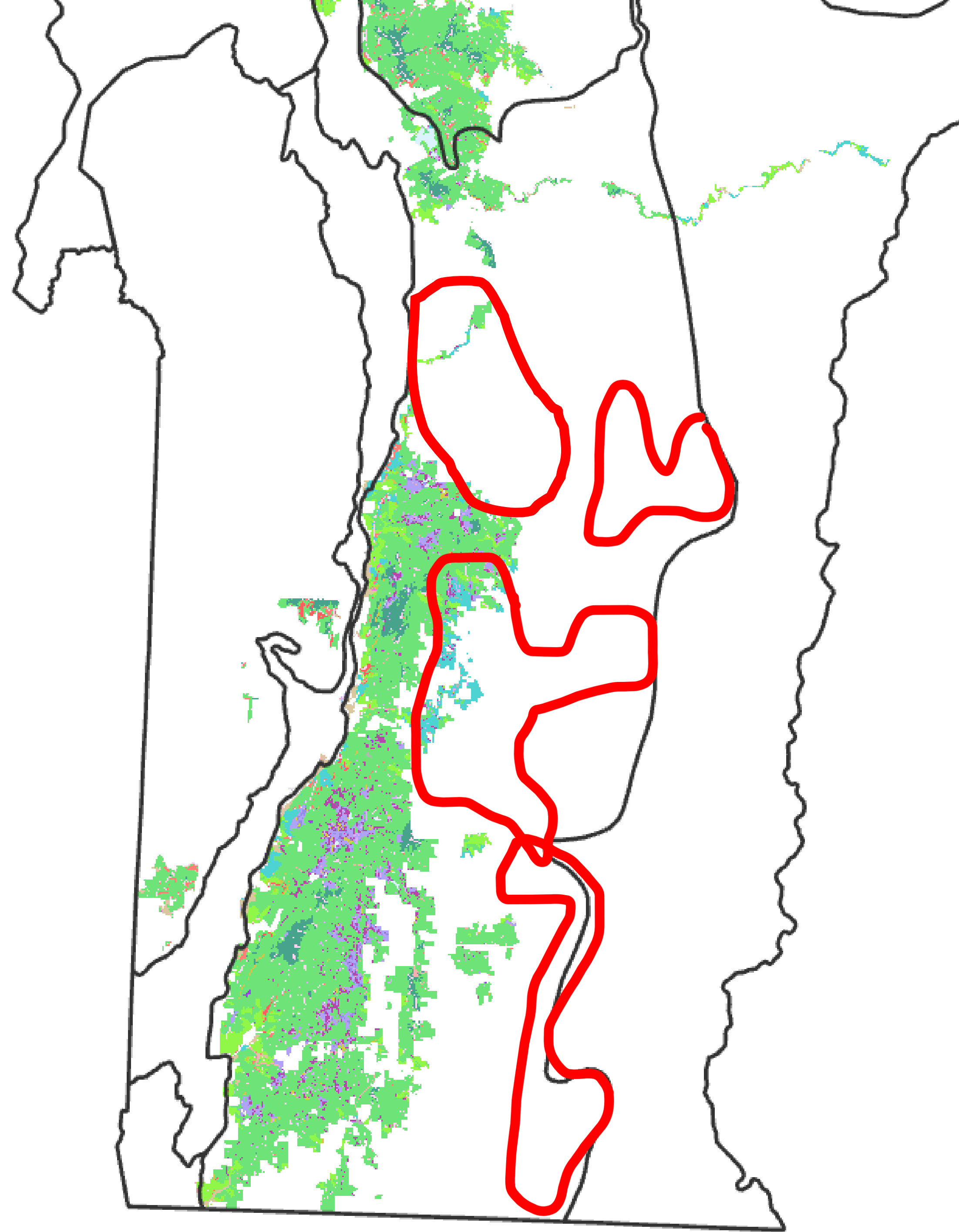


**Laurentian-Acadian Pine-
Hemlock-Hardwood Forest
(blue-green)**

**Appalachian (Hemlock)-
Northern Hardwood Forest
(brown-pink)**



This shows the habitat data clipped to federal lands, indicating that most of these forest types occur outside of the National Forest.



Agenda:



Introduction to NEWT



Wildlands and Old Forests



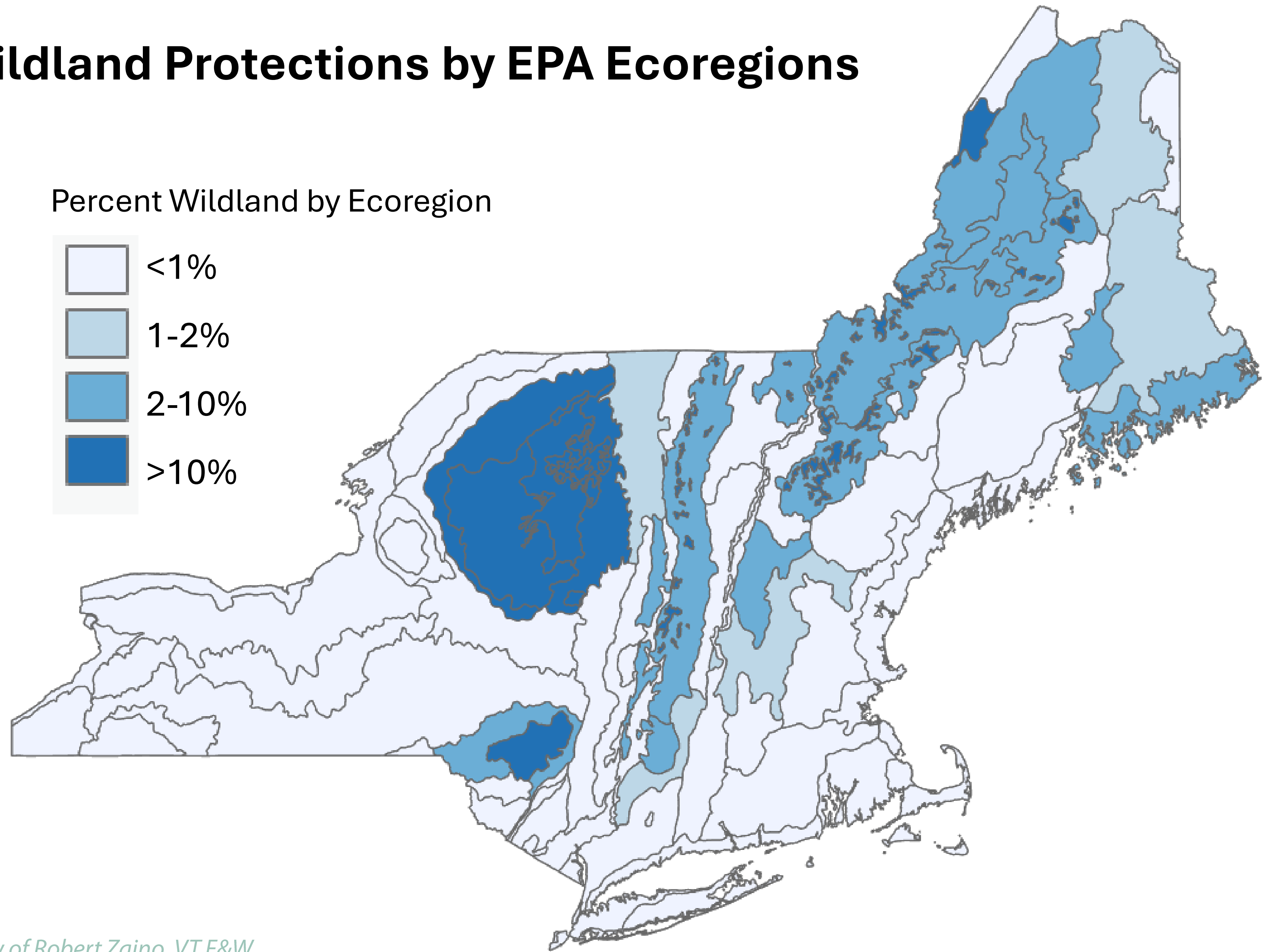
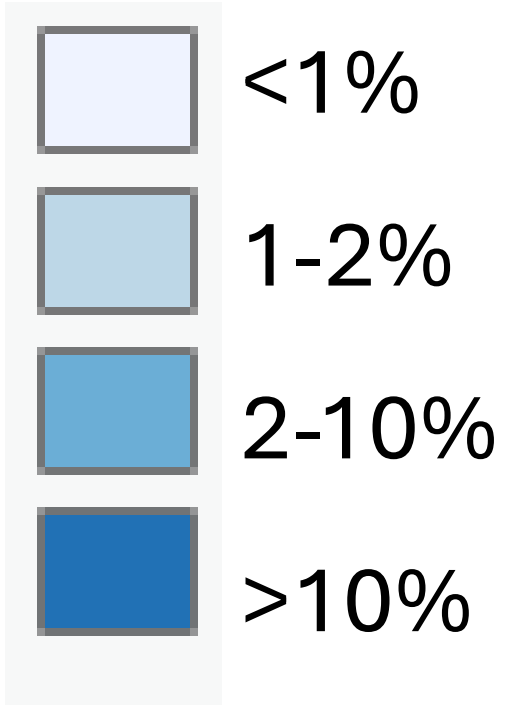
Ecological Representation of Wildlands



The role of Private Lands

Wildland Protections by EPA Ecoregions

Percent Wildland by Ecoregion



Map courtesy of Robert Zaino, VT F&W

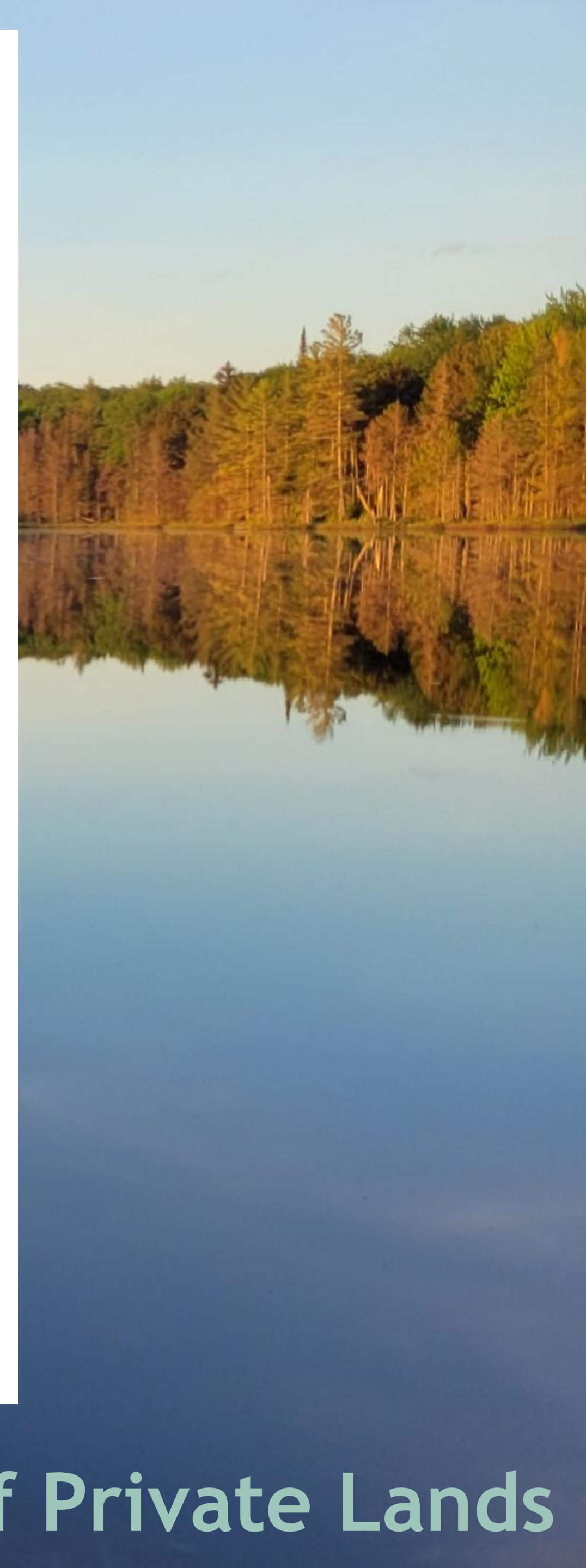




Photo by Eric Bailey



The role of Private Lands



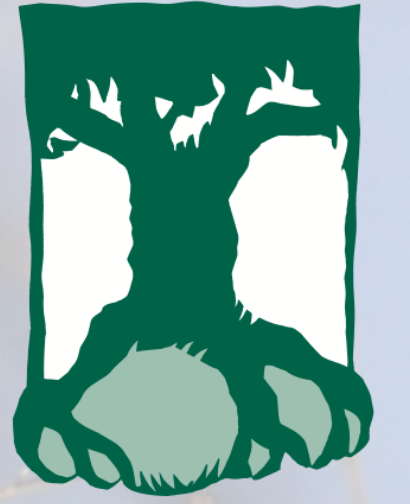
The role of Private Lands



The role of Private Lands

Thank you

NORTHEAST



WILDERNESS
TRUST

