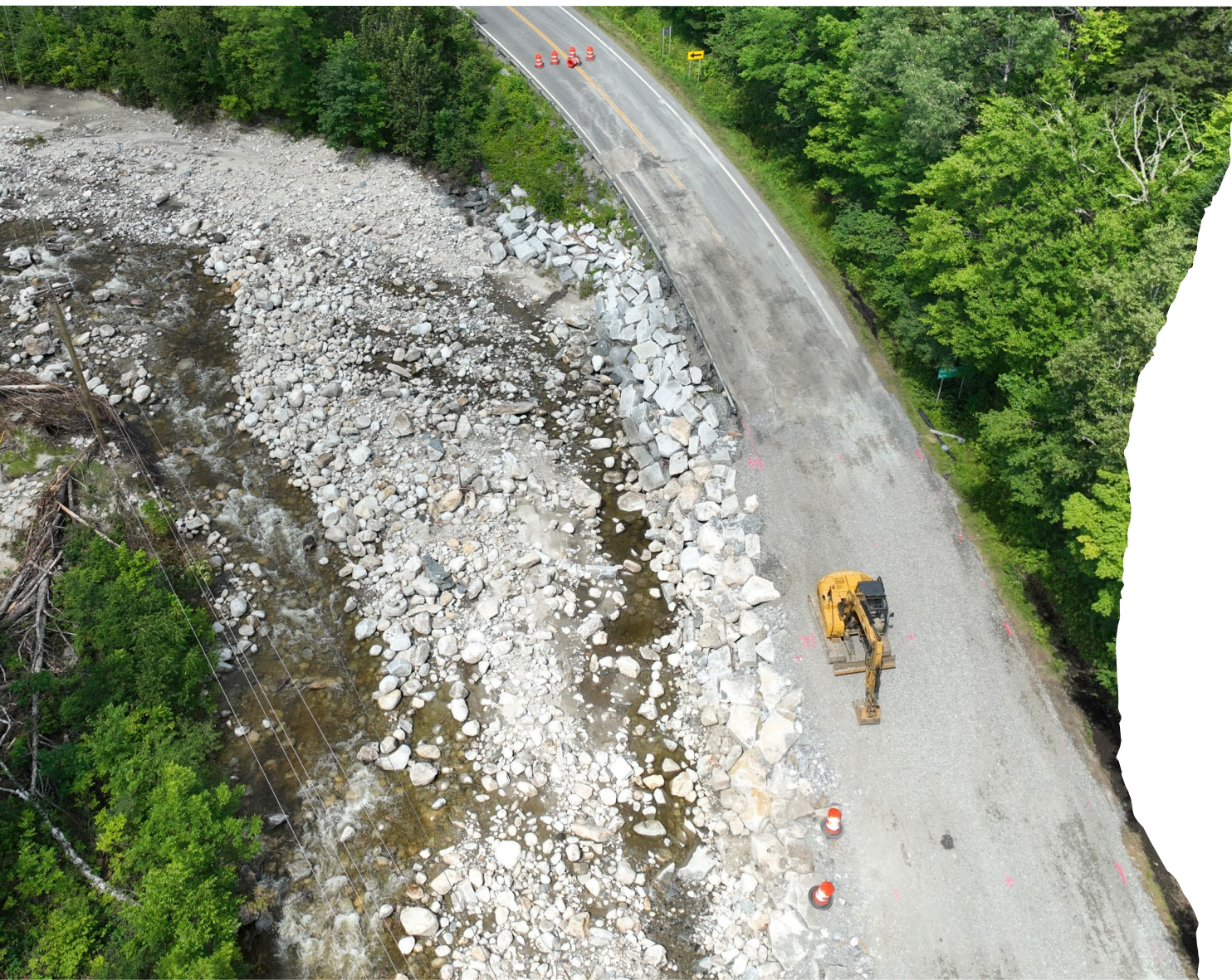


# Stream Alteration Regulation

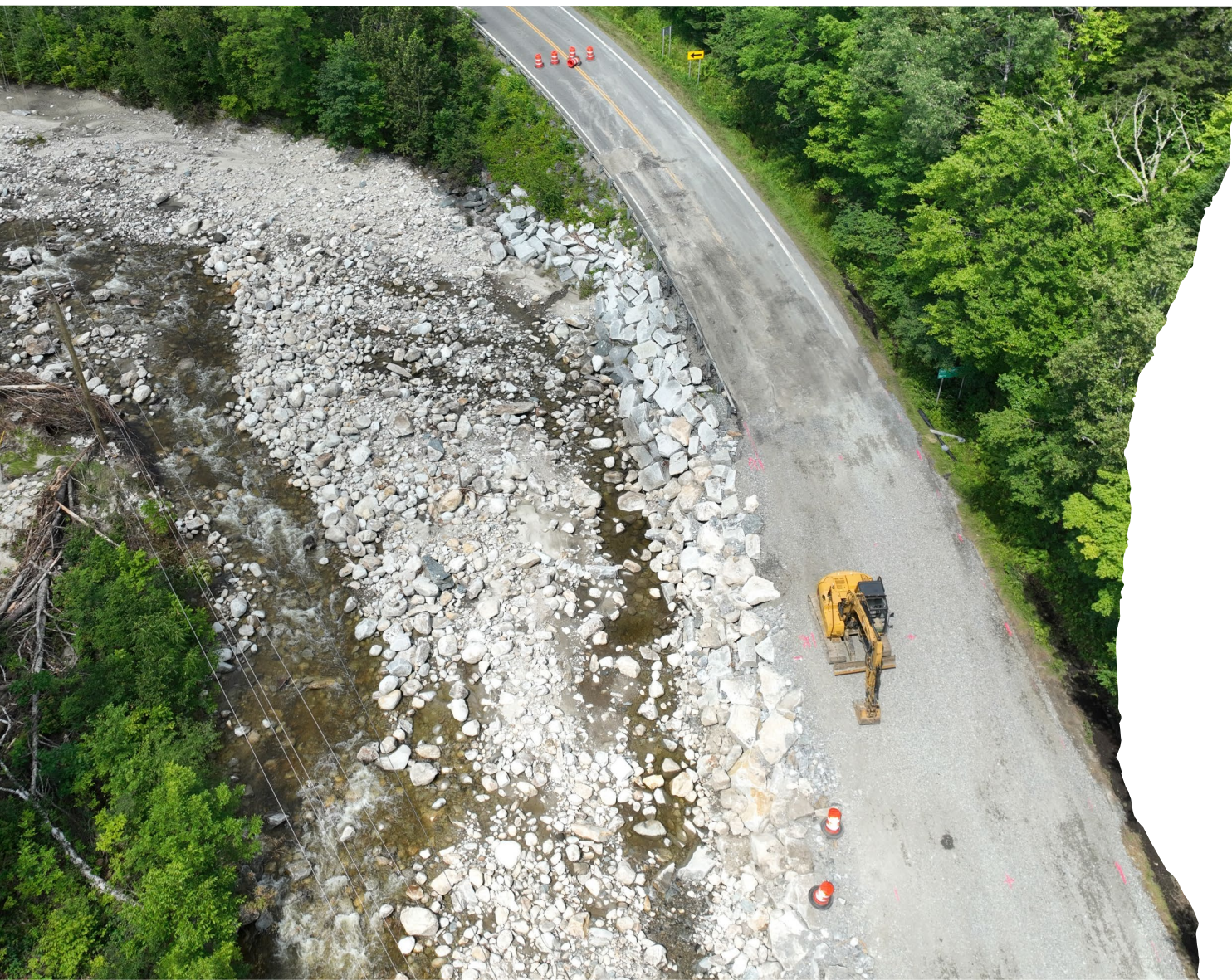


[Rob.Evans@vermont.gov](mailto:Rob.Evans@vermont.gov)  
Program Manager

[Jaron.Borg@vermont.gov](mailto:Jaron.Borg@vermont.gov),  
Supervising River  
Management Engineer

Rivers Program,  
Watershed Management  
Division

# Stream Alteration Regulation

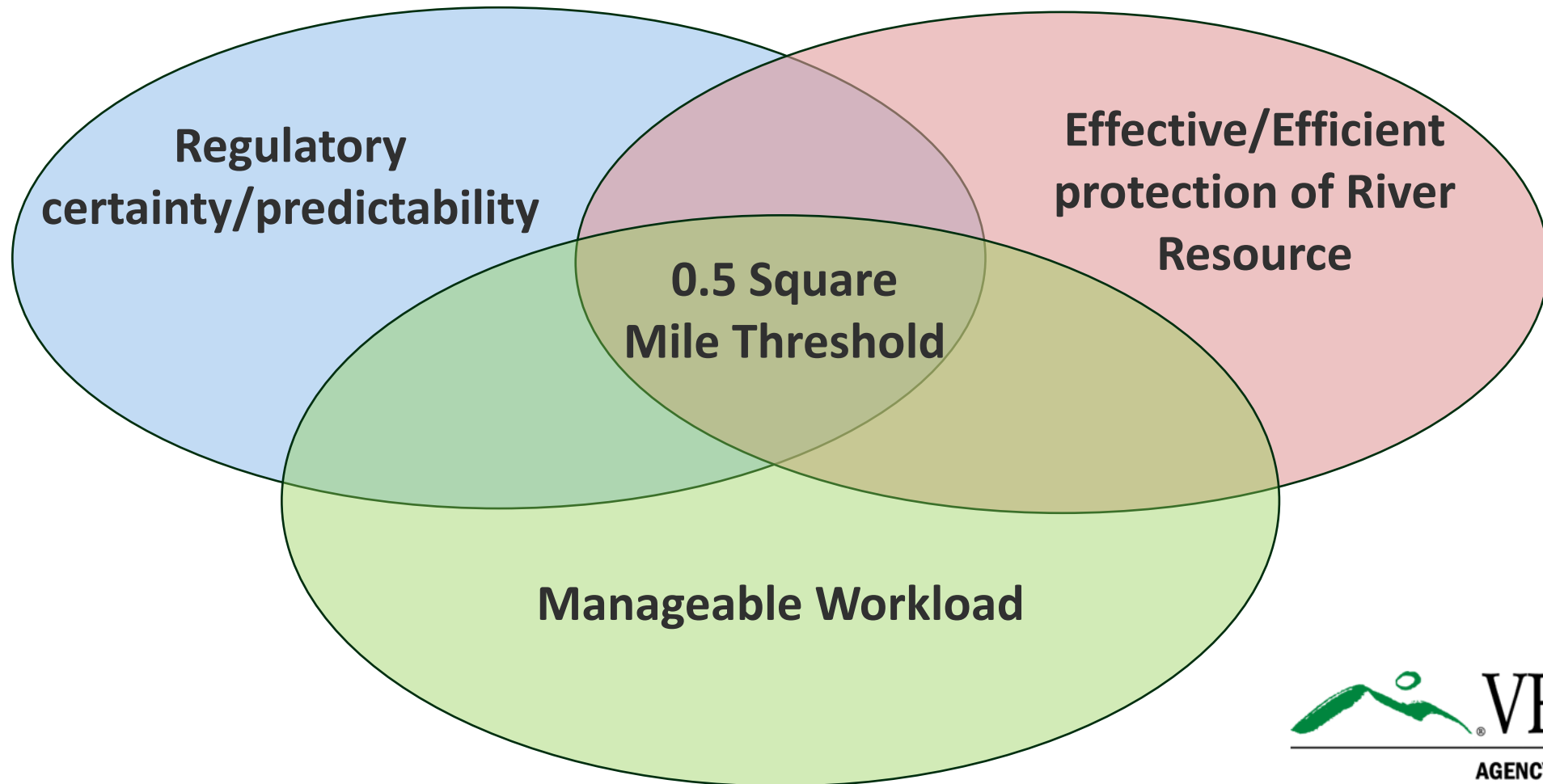


**10 V.S.A. § 1021**

**Excavation or fill of 10 or more cubic yards instream material in a watercourse requires a permit....**

# Stream Alteration Regulation

**H.632: Why Change Jurisdiction back to a drainage area threshold?**





# Stream Alteration

## Original Jurisdiction:

watercourses with  
watershed areas greater  
than 10 square miles

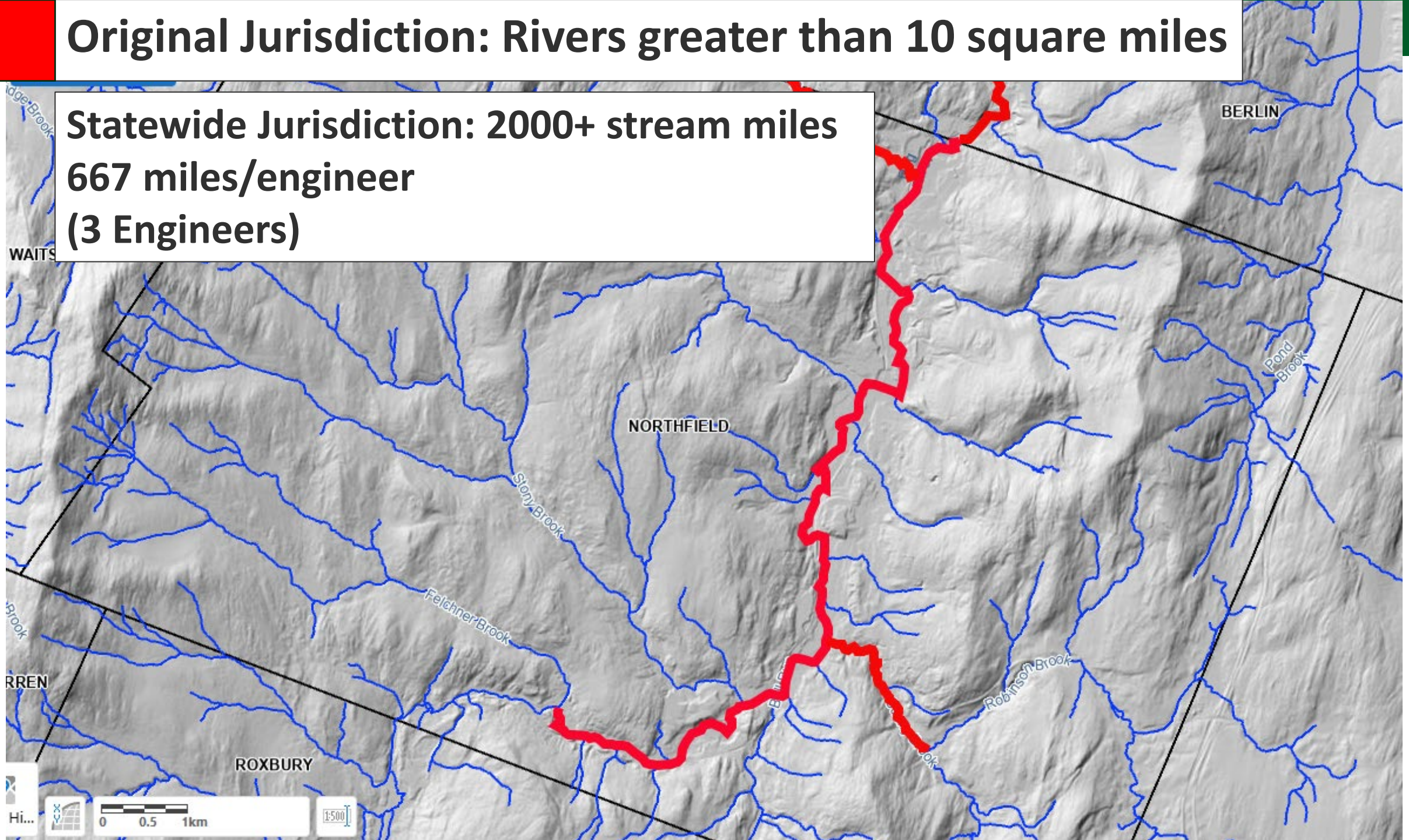
2000+ stream miles

667+ miles/engineer  
(3 Engineers)



# Original Jurisdiction: Rivers greater than 10 square miles

**Statewide Jurisdiction: 2000+ stream miles  
667 miles/engineer  
(3 Engineers)**





# Stream Alteration

## Original Jurisdiction:

watercourses with watershed areas greater than 10 square miles

## Act 110 (2010)

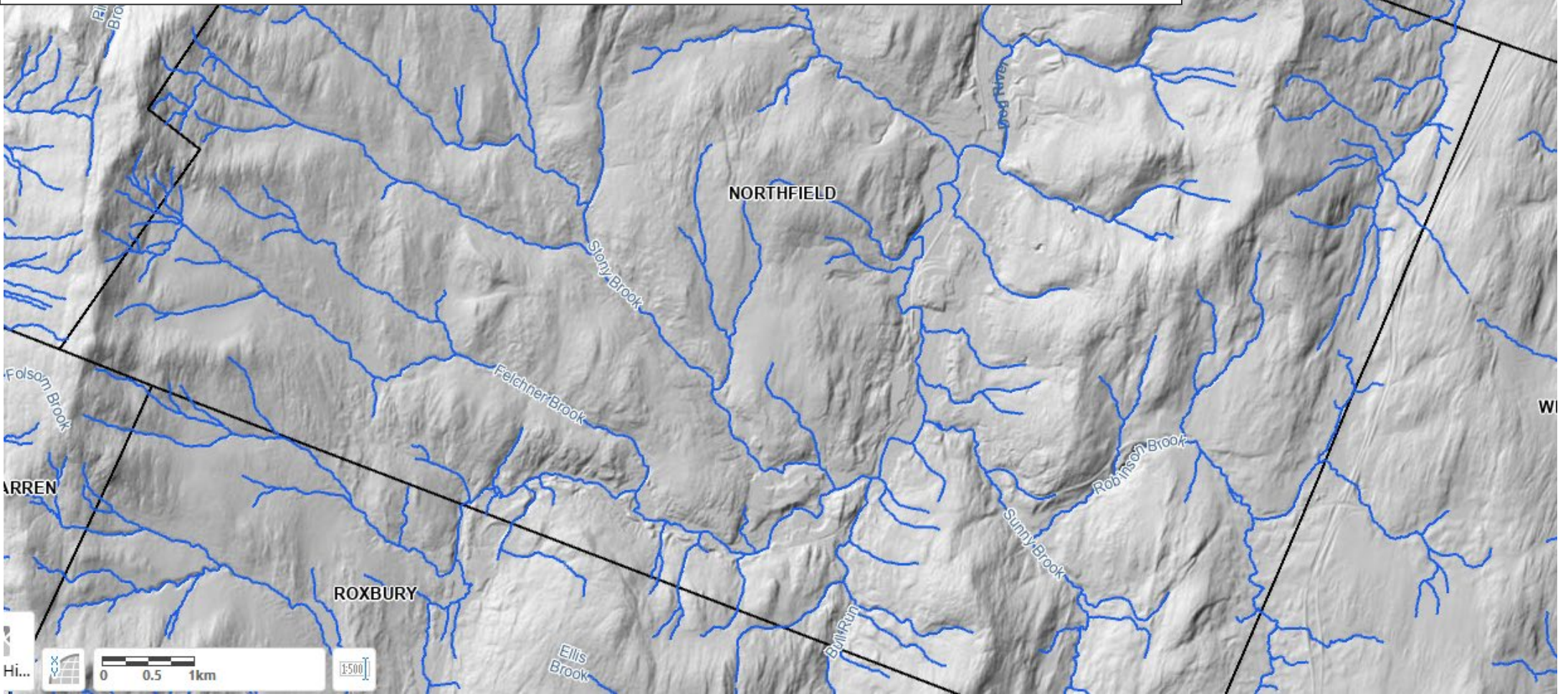
All "Watercourses" i.e.,  
Perennial Streams  
23000 mapped stream  
miles.

7667+ miles/engineer  
(3 Engineers)



# Act 110 (2010): All Perennial Rivers and Streams

**Jurisdictional determinations: 23000+ stream miles**  
**Engineers**  
**7667 miles/engineer**





# Stream Alteration

## Act 138 (2012)

**Authority expanded to flood response activities on all perennial rivers and streams.**

**Additional 2 staff with a jurisdictional territory of 4600+ miles/engineer.**



# Act 138 (2012): All Perennial Rivers and Streams

## Current

Jurisdictional determinations: 23000+ stream miles

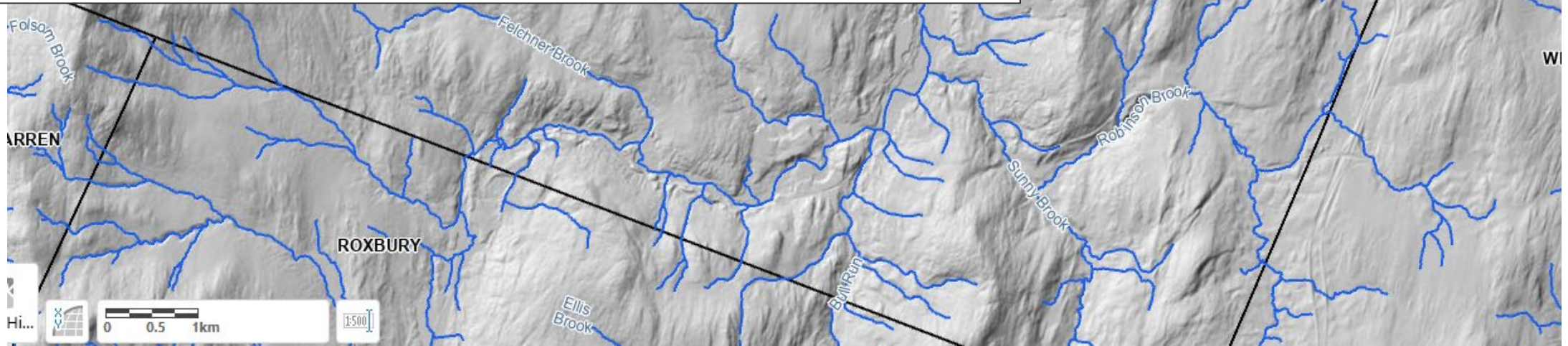
Expanded post flood permitting authority

5 Engineers

4600 miles/engineer

## 2017

FEMA Approves Stream Alteration Rule as eligible standards for flood recovery funding





# Stream Alteration

**Original Jurisdiction:** watercourses with watershed areas greater than 10 square miles

**2010: Act 110** – All Perennial Rivers and Streams

**2012: Act 138** – All Perennial Rivers and Streams + expanded permitting authority

**2017: FEMA Standards Approval**  
Increases flood recovery coordination workload

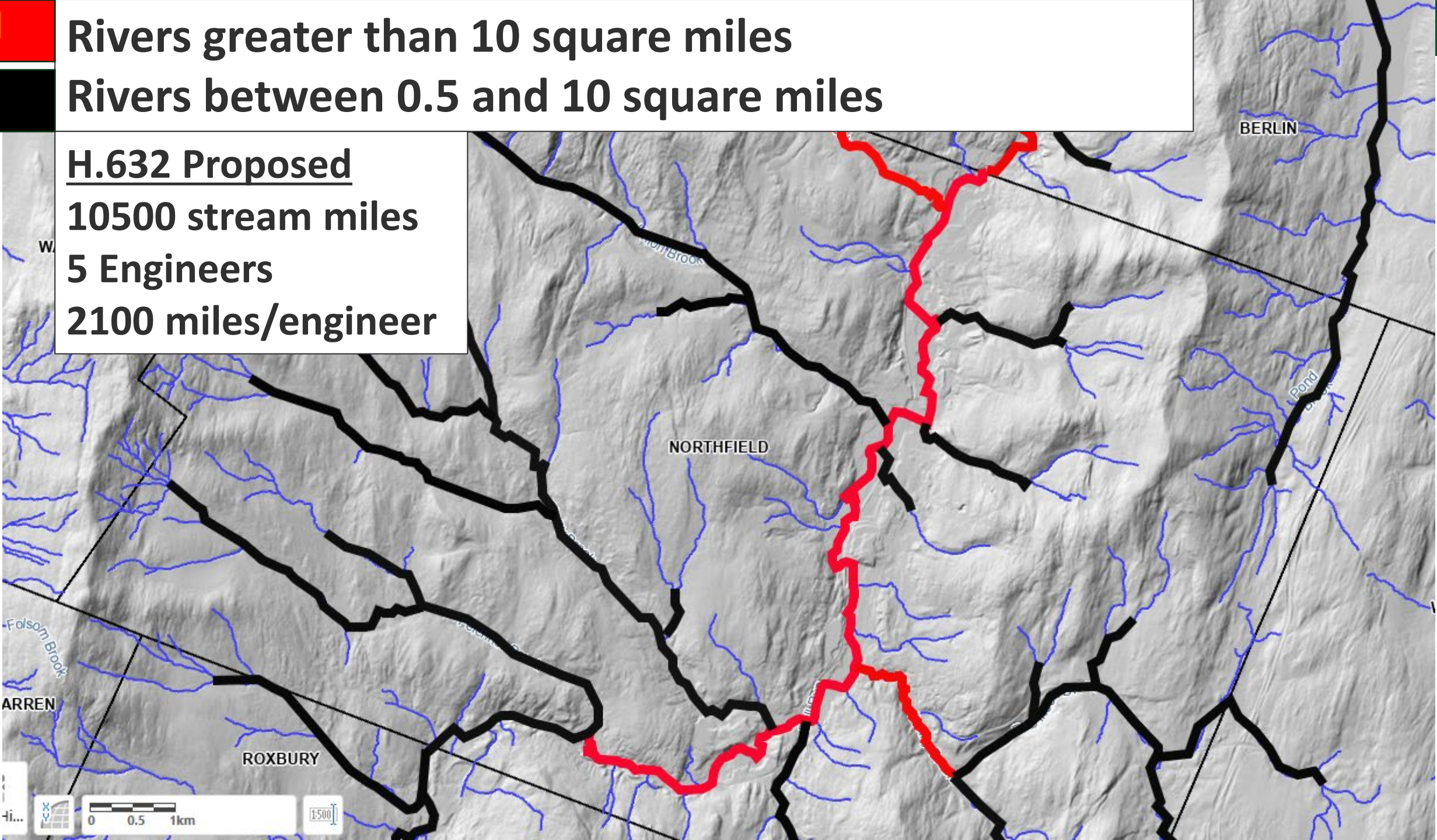
**2026: H.632 Proposal**  
Watercourses with watershed areas greater than 0.5 square mile.





Rivers greater than 10 square miles  
Rivers between 0.5 and 10 square miles

H.632 Proposed  
10500 stream miles  
5 Engineers  
2100 miles/engineer



# Stream Alteration Regulation

## Original Jurisdiction:

10 sq.mile  
2000+ stream miles  
3 Engineers



## 2010

Act 110  
All perennial Streams  
23000+ stream miles  
3 Engineers



## 2012

Act 138  
Emergency Work Permitting Authority  
23000+ stream miles  
5 Engineers



## 2017

FEMA Approves Stream Alteration standards flood recovery funding  
23000+ stream miles  
5 Engineers



## 2026:

**H632**  
0.5 square mile threshold  
10400 stream miles  
5 Engineers

2011-2025



**20 Flooding related Major Disaster Declarations**

	Original Jurisdiction	2010 Act 110	2012 Act 138	2026: H632 Proposal
Stream miles	2000+	23,000+	23,000+	<b>10,500</b>
Miles/ engineer	667	7667	4600	<b>2100</b>



# Stream Alteration Regulation



**Flood Recovery by the numbers:**

**1662 permits issued since July 2023 floods**

**Est. 7,500 site visits**

**Est. 35,000 instances of tech assistance (calls, emails, text exchanges, in-person meetings) regarding jurisdictional or technical questions/inquiries.**



# Stream Alteration Regulation

**H.632 goal is to provide jurisdictional clarity decrease while reducing staffing burden to make to make jurisdictional determinations.**

**Jurisdictional clarity will aid local officials in advance projects appropriately for federal reimbursement, reducing delays, turnback and RFIs through the PA process.**

**Jurisdictional determination can reliably be made with available mapping information with technical ability at the town or RPC level.**

**Clear jurisdictional determinations can be made immediately for use in project development.**






# Stream Alteration Regulation

**Simplifying jurisdictional determinations will free up time and reduce travel.**

**30% of engineer time spent on site visits, with and estimated 20% of these for jurisdictional determinations.**

**Reducing jurisdictional determination time will increase time staff can dedicate to large, complex, and/or restoration projects.**



# Stream Alteration Regulation

**Provide opportunities for staff to stay current with best engineering practices.**

**Increases opportunities for education and outreach re. post-flood notification/permitting requirements**

**Clarity will benefit our enforcement colleagues in making informed decisions regarding Stream Alteration Jurisdiction**

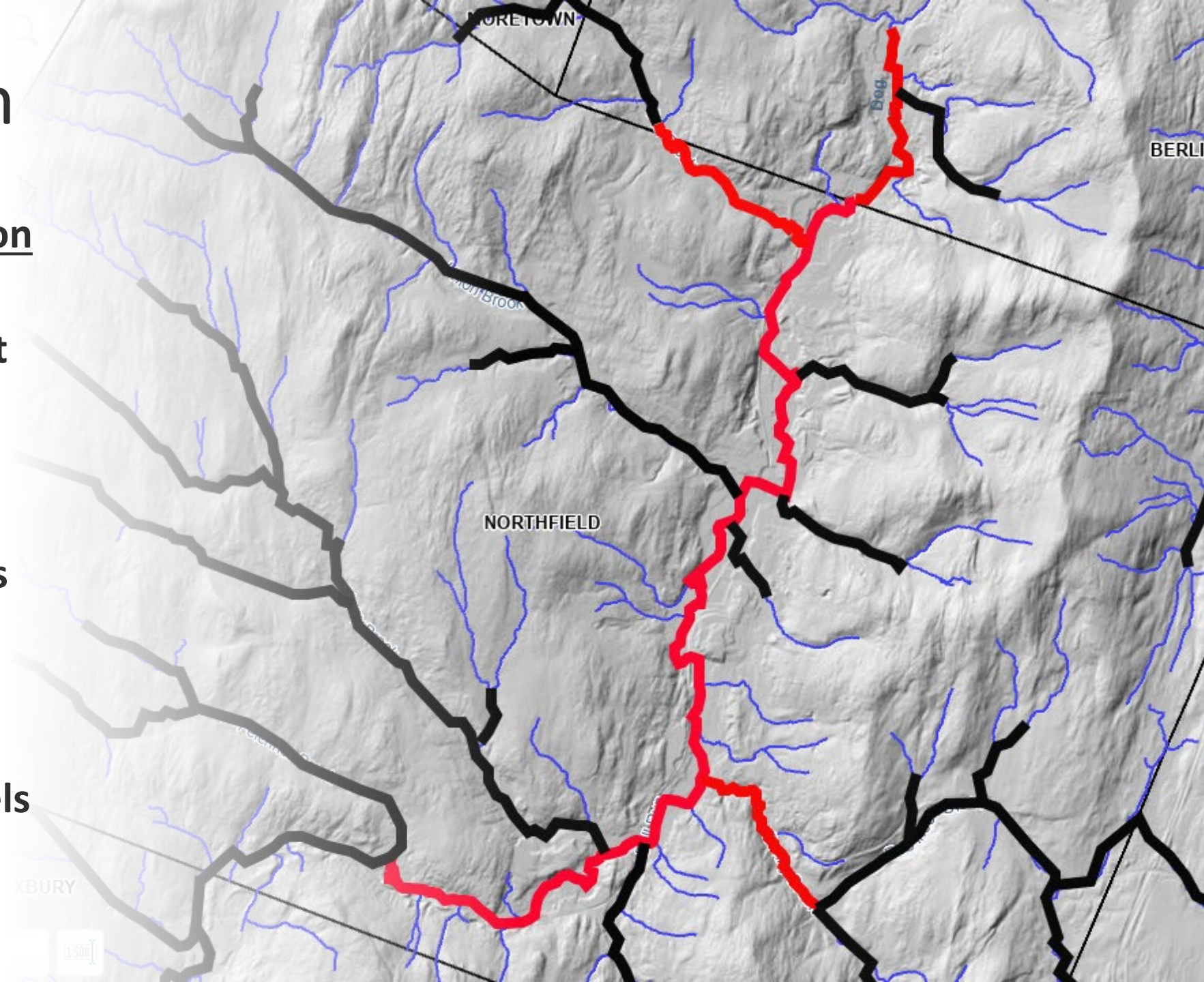
# Stream Alteration

H.632 0.5 sq mile jurisdiction

Provide certainty on permit requirements

Improve efficiency and delivery of service to towns and landowners

Aligns jurisdiction and workload with staffing levels



# Questions?

[Rob.Evans@vermont.gov](mailto:Rob.Evans@vermont.gov)

Program Manager

[Jaron.Borg@vermont.gov](mailto:Jaron.Borg@vermont.gov),

Supervising River Management  
Engineer

Town specific maps are available at:

<https://dec.vermont.gov/watershed/rivers/river-management>

**Stream Watershed Sizes mapped for each Vermont town as Guidance for Stream Alteration Regulations.**

Select your town from the list below to view the PDF map for that town. PDF file sizes range from about 300KB to about 2.8MB.

Select Your Town ▼

Get Town Watershed Map