

When you  
**CLYINK**  
you can.

A better redemption experience

# Who We Are



We started in Maine – the nation's third Bottle Bill state – where we saw an opportunity to launch a modern way for consumers to recycle.

We aim to dramatically reduce beverage container waste in the communities we serve. We also understand that our success isn't just enhanced by our environmental commitment – it's the result. That's why we're still dedicating our resources to improving the container recycling process.

## THE NUMBERS



**18** years in business as the pioneer of bag-drop redemption

**500,000+** household accounts

**2.6 billion+** containers CLYNKed

**5** states served through bag-drop: ME, NY, CT, OR, & IA

**107** sustainability stations in ME, NY, & CT

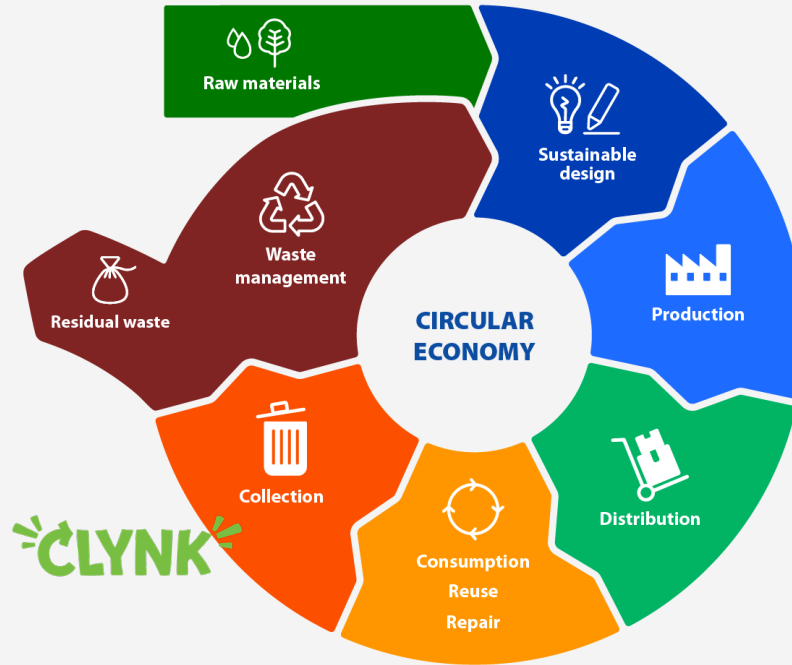
**173** employees

**\$4,913,742** raised through CLYNK To Give



# What We Do

**The circular economy model:**  
less raw material, less waste, fewer emissions



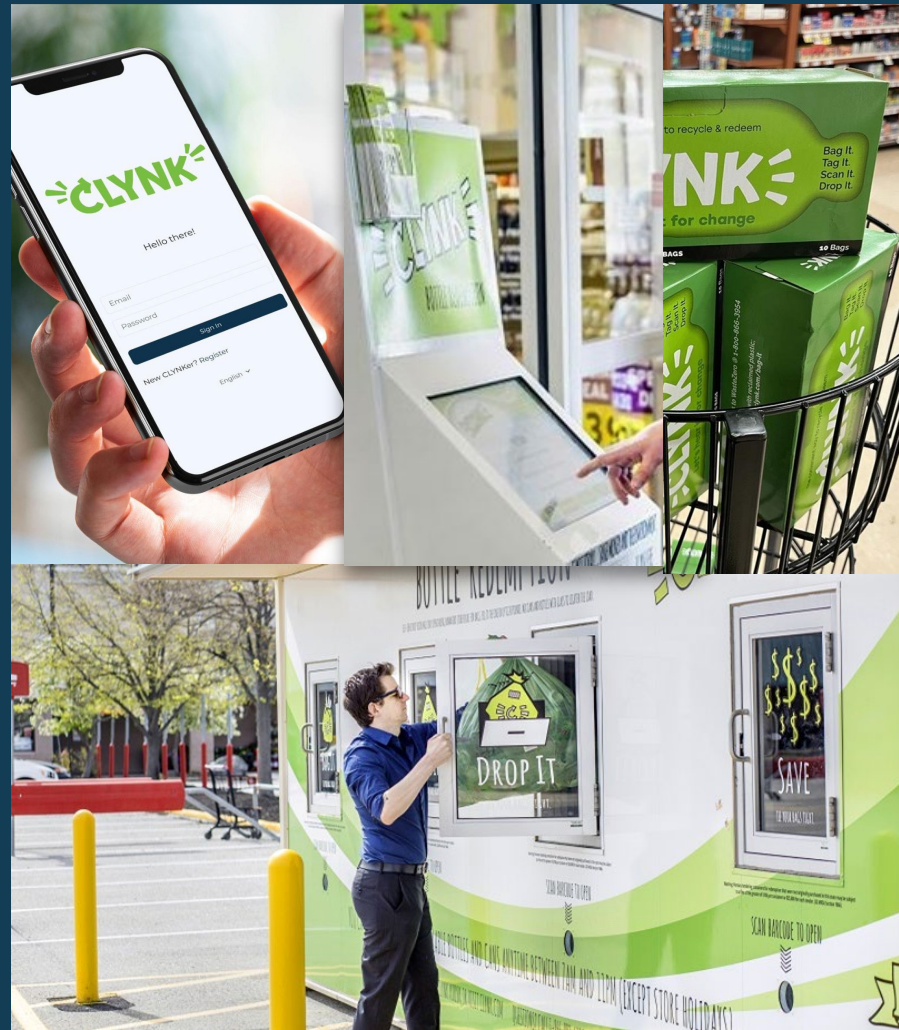


 **For Consumers**



# Bag Drop

1. **Sign up** via app or phone call
2. **Get bags & tags** at the grocery store
3. **Scan & drop** your full bags at a sustainability station
4. **Get deposits back** into your digital wallet
5. **Withdraw or donate balance** at a retail partner, or digitally





## How Does it Work?

- ① Get the CLYNK mobile app.
- ② Create your account.
- ③ Purchase CLYNK bags in the store.
- ④ Fill your bags with redeemable containers.
- ⑤ Tie your bags tightly.
- ⑥ Return your filled bag to this station.



# **Behind The Scenes**



# How CLYNK Works



Customers register via mobile app or online and CLYNK bags purchased in store.



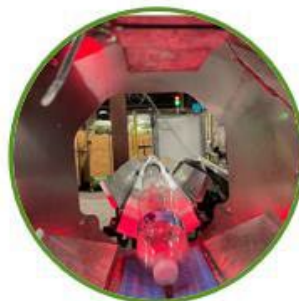
Customers drop bags of redeemable containers at CLYNK's Sustainability Station in the Stop & Shop parking lot.



CLYNK transports material to the processing facility.



Containers are redeemed, sorted and returned to the Brand to be made into containers again.

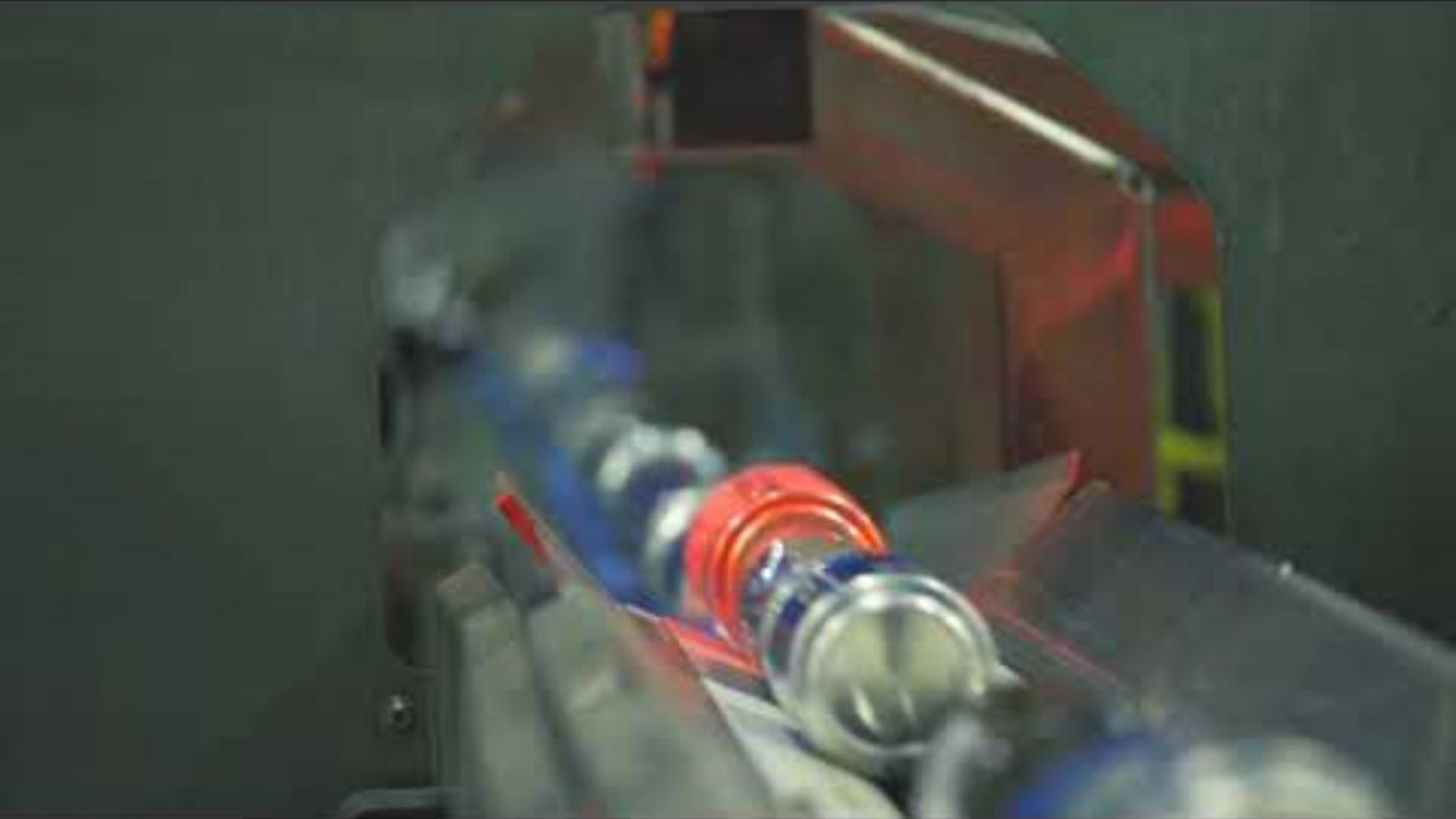


Redemption value is credited to customer's account.

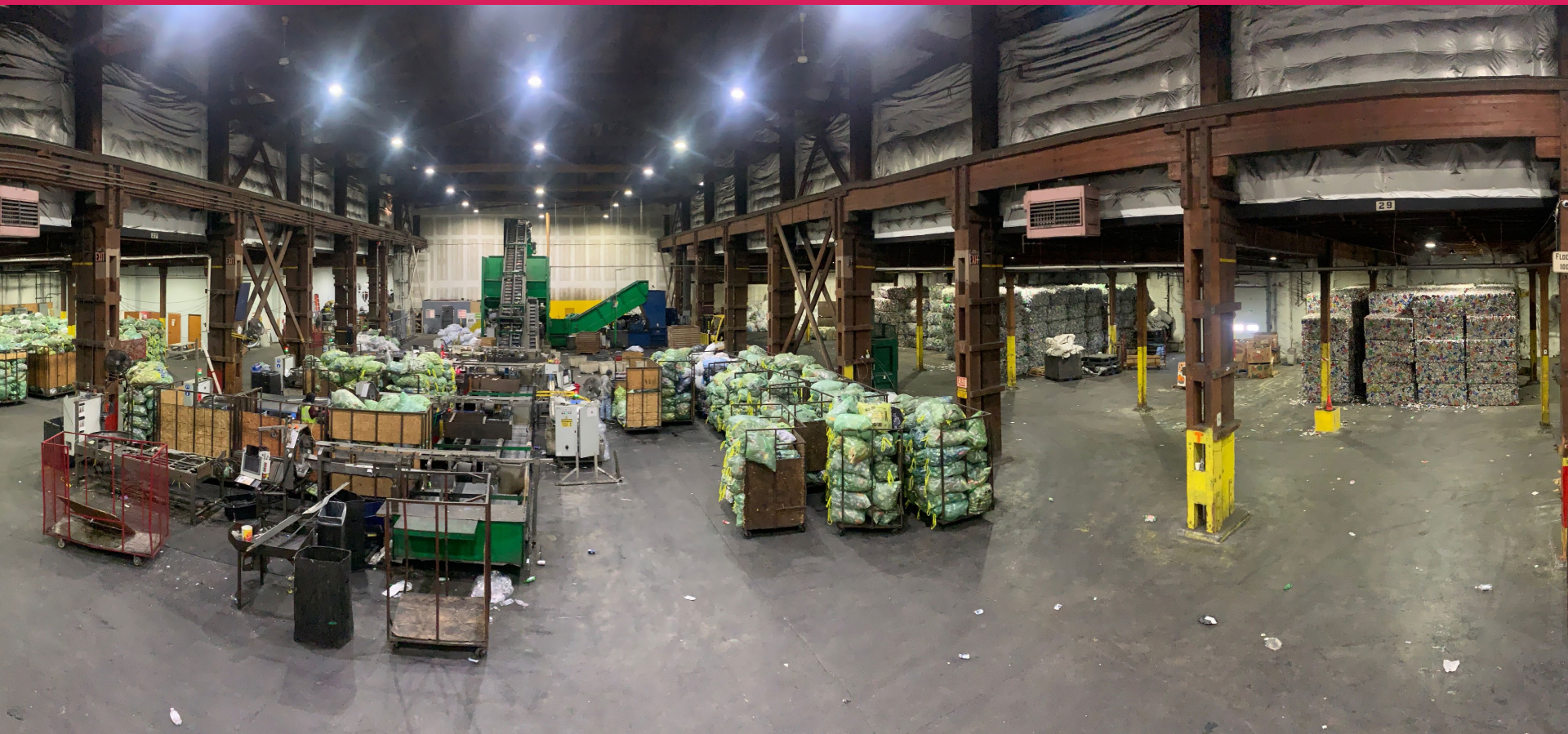


A man with glasses and a dark shirt is operating a recycling machine. The machine features a large, circular, rotating drum that is filled with crushed metal cans, likely aluminum. The cans are in various colors, including red, white, and blue. The man is looking down at the drum, and his hands are visible near the edge of the machine. In the background, there are several large green bags filled with material, possibly more cans or other recyclables. The overall scene is an industrial recycling facility.

**We deliver world class solutions to collect, process,  
and return the material to the economy — closing  
the loop & building circularity.**







 **Thank you** 

**Sam Tracy**

Director of Legislative Affairs & Business Development  
[stracy@clynk.com](mailto:stracy@clynk.com)