

The Vermont Department of Fish & Wildlife

Land Acquisition, Conservation, and Restoration



Will Duane

Land Acquisition Coordinator

January 2025

*The mission of the Vermont Fish & Wildlife Department is the conservation of our fish,
wildlife, plants and their habitats for the people of Vermont*

The Vermont Department of Fish & Wildlife

- ▶ 150+ Wildlife Management Areas and Streambank Management Areas statewide
- ▶ 100 years+ of public land ownership totaling over 130,000 acres
- ▶ VDFW is the largest single owner of wetlands in Vermont
- ▶ Conservation for wildlife habitat, public access, water quality, and flood resiliency



The Vermont Department of Fish & Wildlife

Types of Flood Resiliency Activities

- ▶ Wetland and Floodplain Property Acquisition
- ▶ Wetland Restoration
- ▶ Streambank Property Acquisition
- ▶ Assessment and Technical Assistance for Municipalities
- ▶ VFWD State Wildlife Grants, Habitat Stamp funds and Watershed Grants to replace undersized culverts and to remove unwanted dams
- ▶ Wood Additions to Streams and Streambank Plantings.

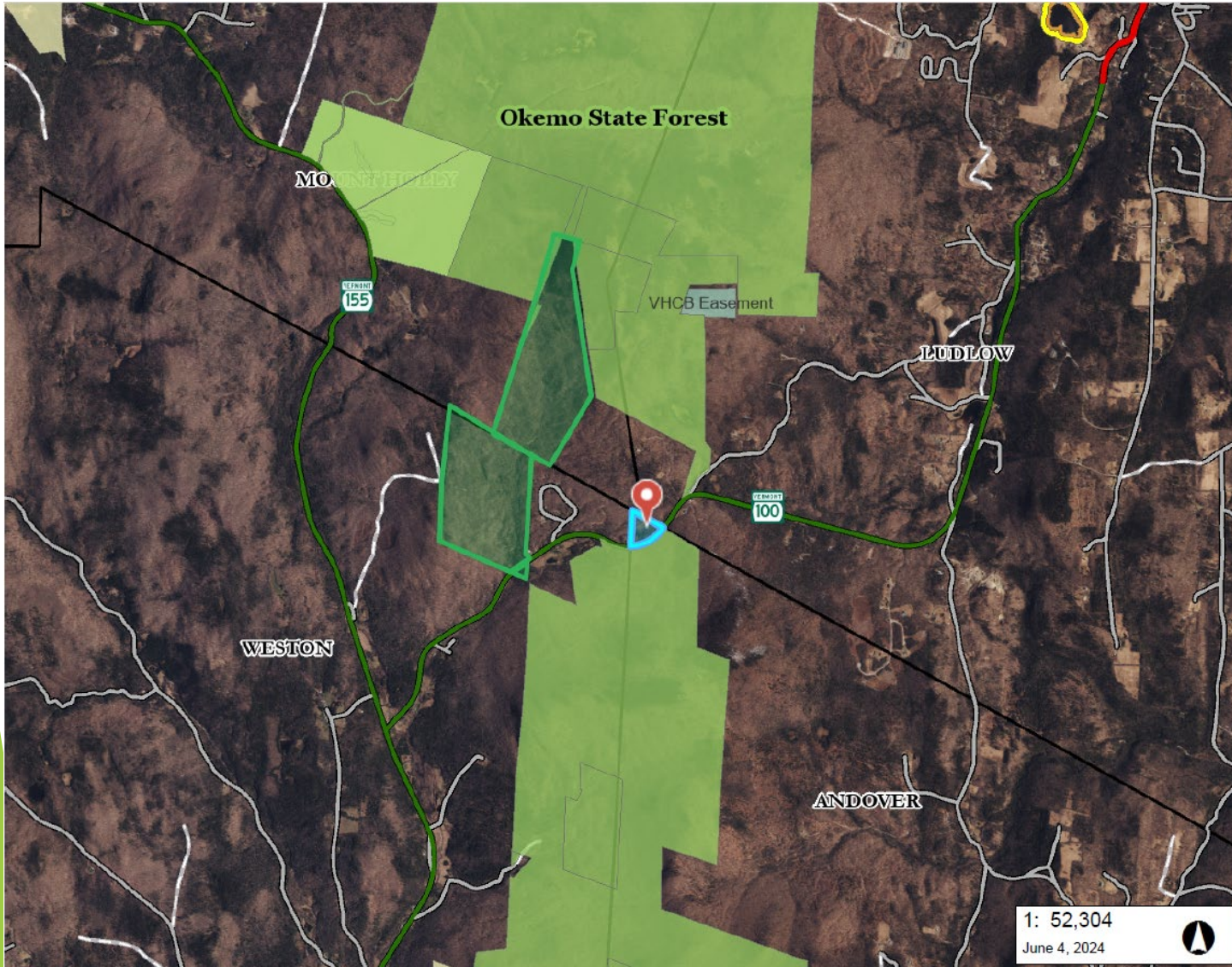


The Vermont Department of Fish & Wildlife

- ▶ Brandon Swamp WMA
- ▶ 600 Acres+ public land with a growing footprint
- ▶ Most biologically diverse swamp complex in New England
- ▶ VT Conservation Design as a Landscape Scale Site of highest priority for Interior Forest Blocks, Connectivity Blocks, Surface Water and Riparian Areas, and Wildlife Connectivity



The Vermont Department of Fish & Wildlife



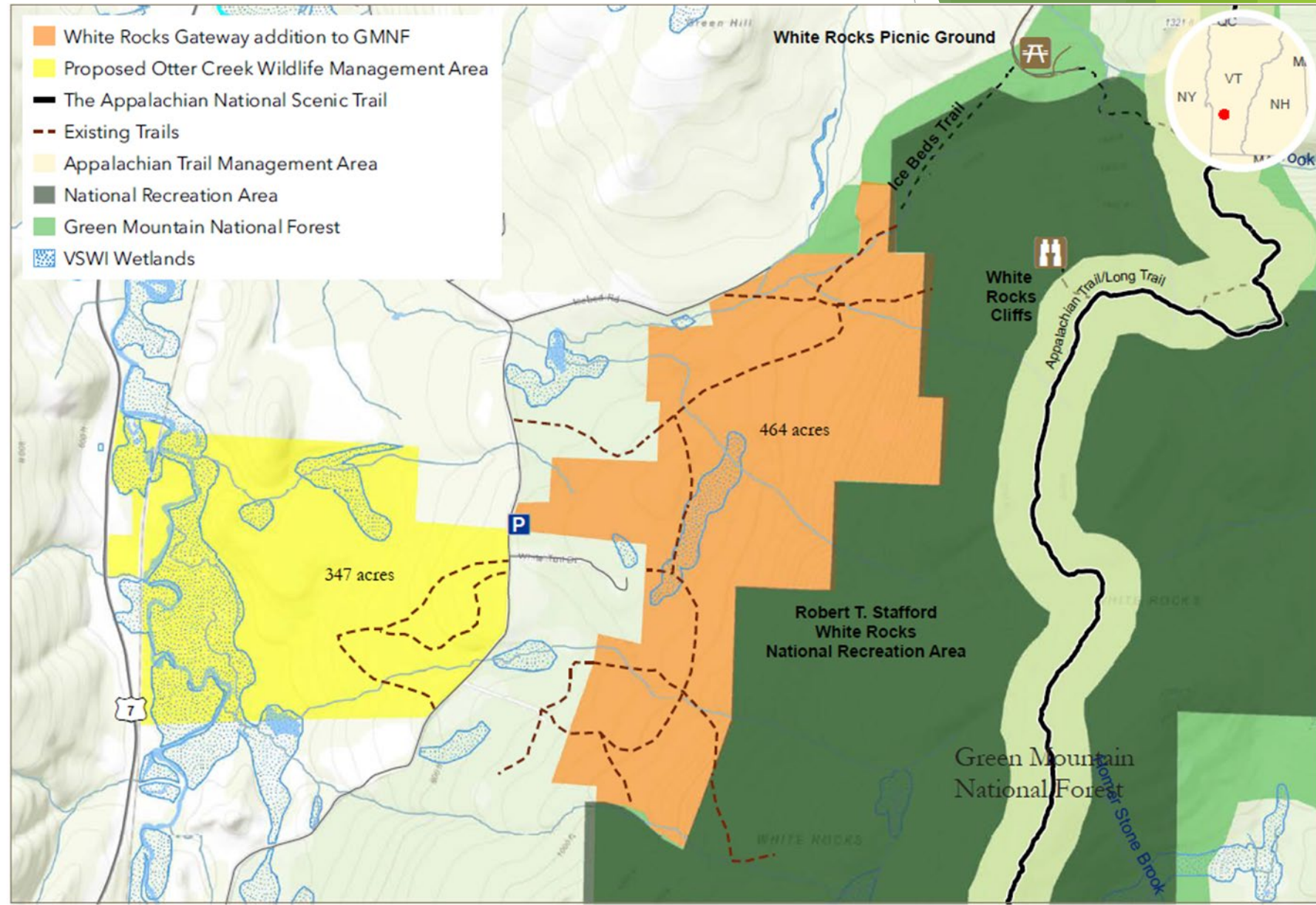
Connectivity at the Okemo Wildlife Corridor

- Strategically linking sections of the Okemo State Forest along Route 100.
- Creation of Awasos WMA in 2022
- Andover addition in 2024

The Vermont Department of Fish & Wildlife

Otter Creek WMA

- ▶ 350 Acres Total
- ▶ 100 Acres of wetland and flood plain
- ▶ Upstream From Historic Wallingford Village.



The Vermont Department of Fish & Wildlife

Flood Buyouts

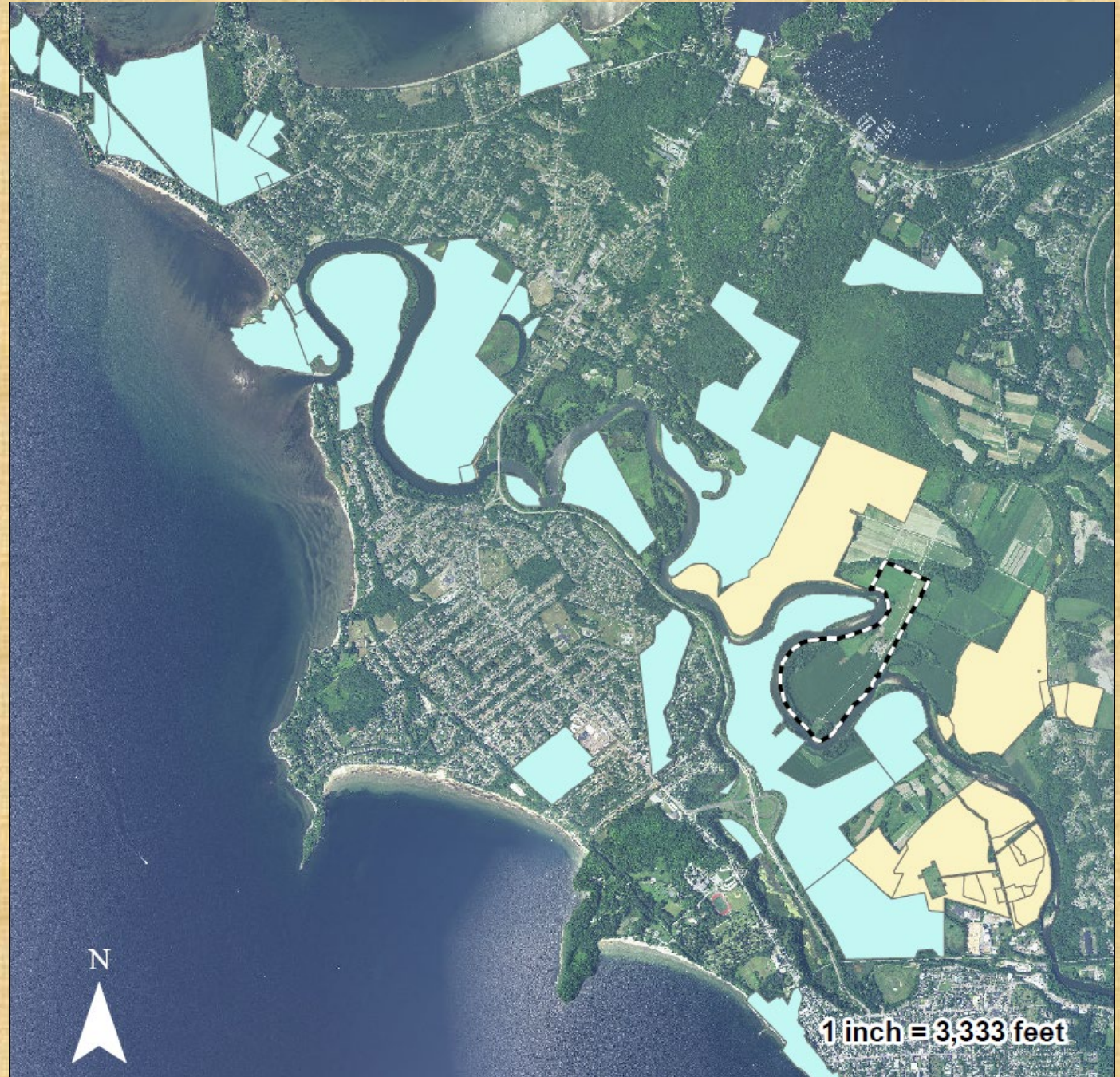
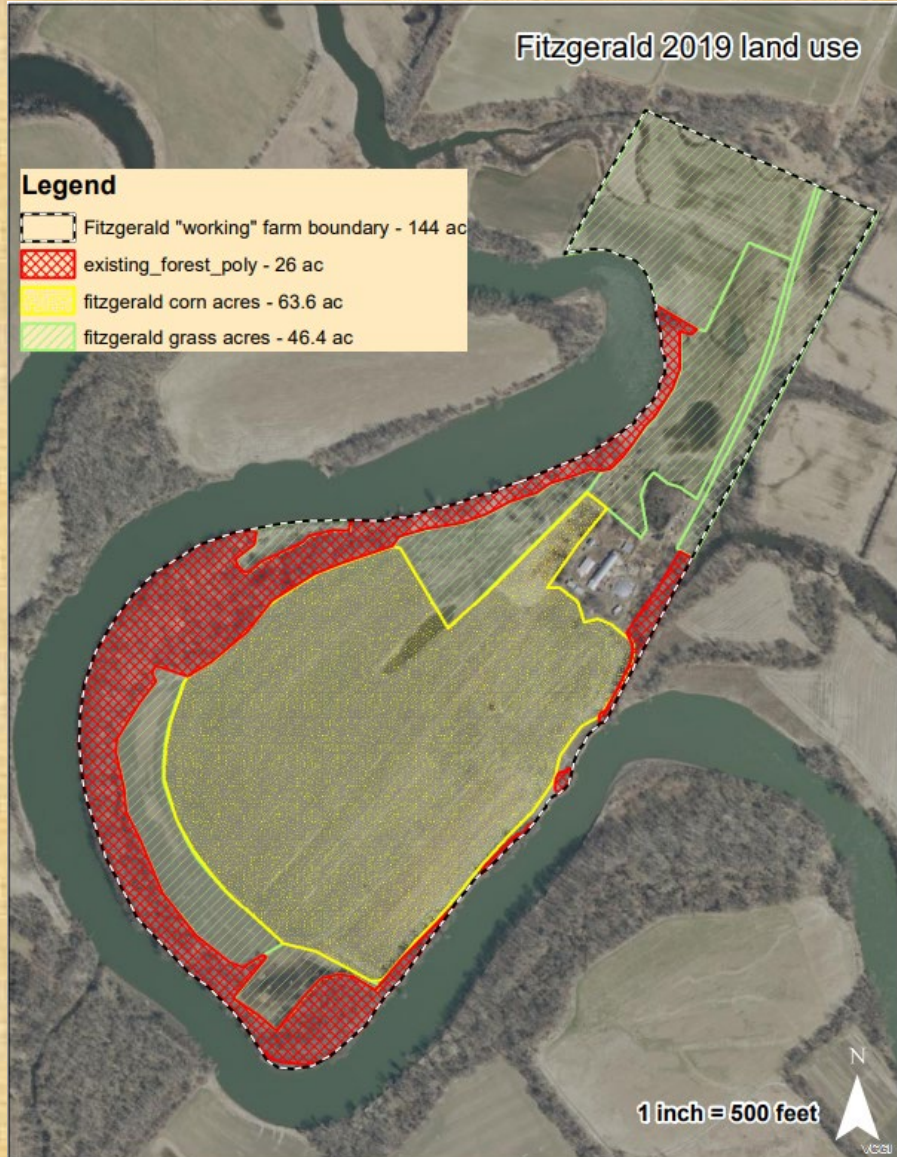
- ▶ Upper Missisquoi in Troy - 78 Acre FEMA parcel and farmland
- ▶ 2 Parcels in Morristown on Lamoille River



Intervale WMA – Fitzgerald Farm

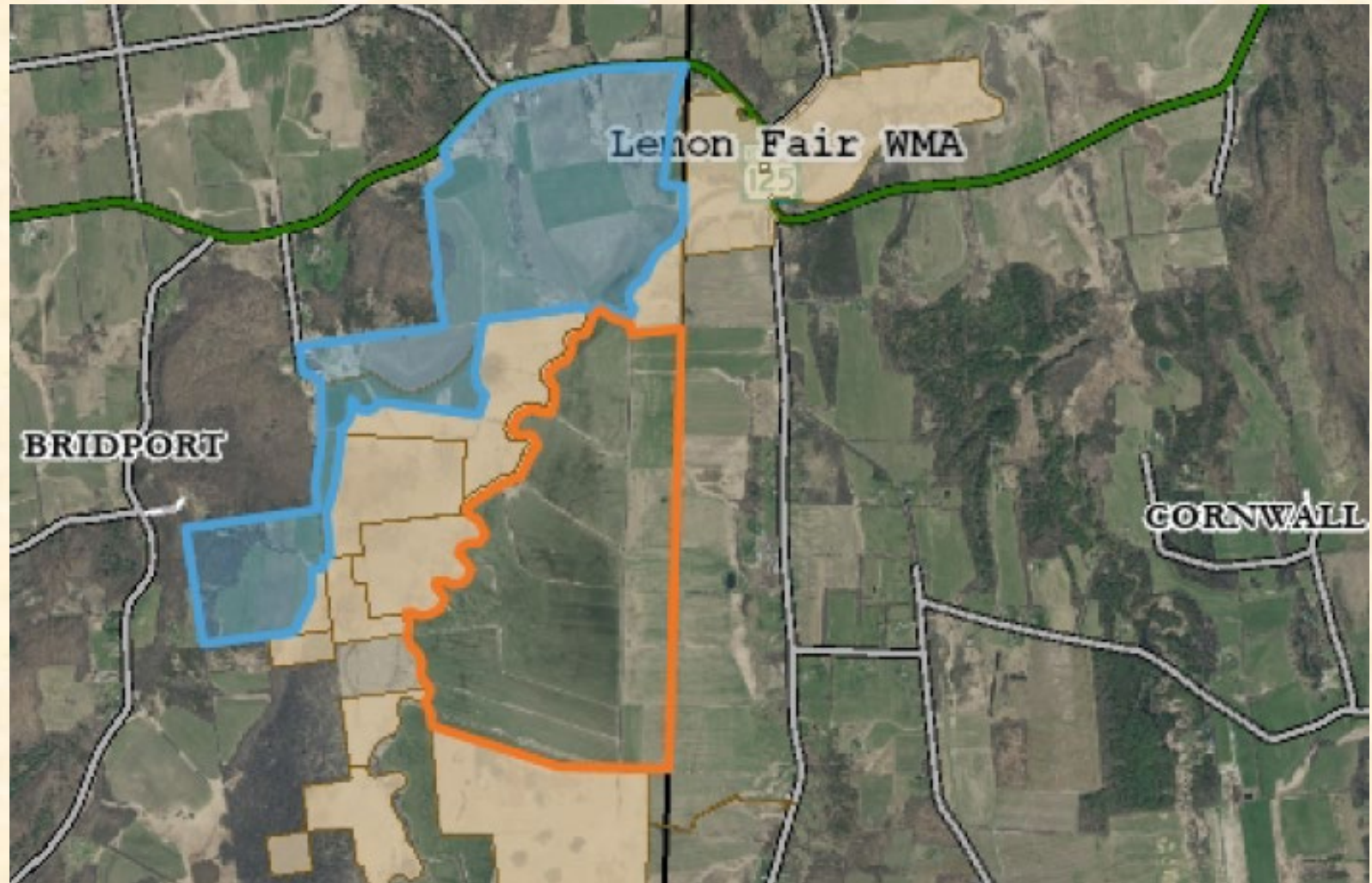
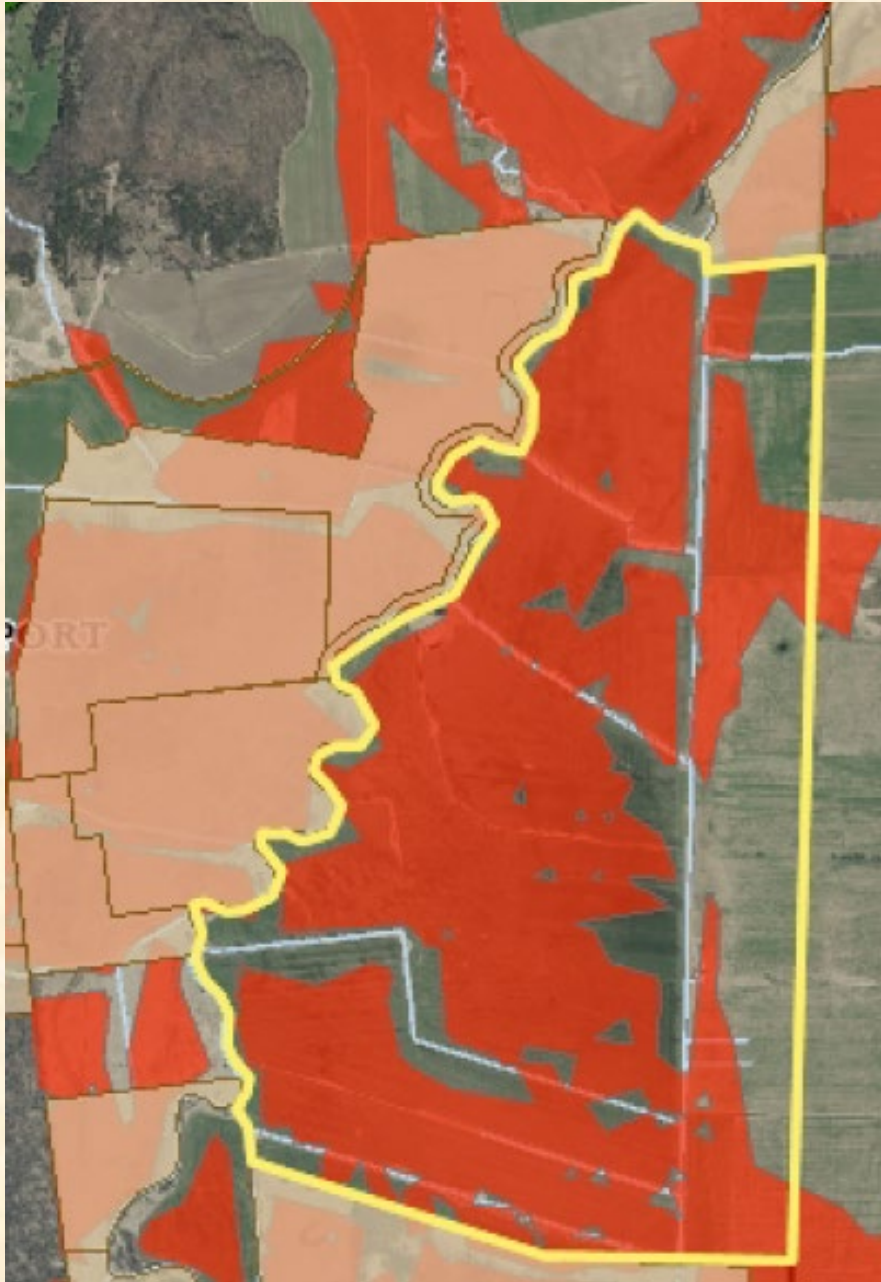
124 Acres – 100 Restorable

Colchester, VT – Winooski River Sub-Basin





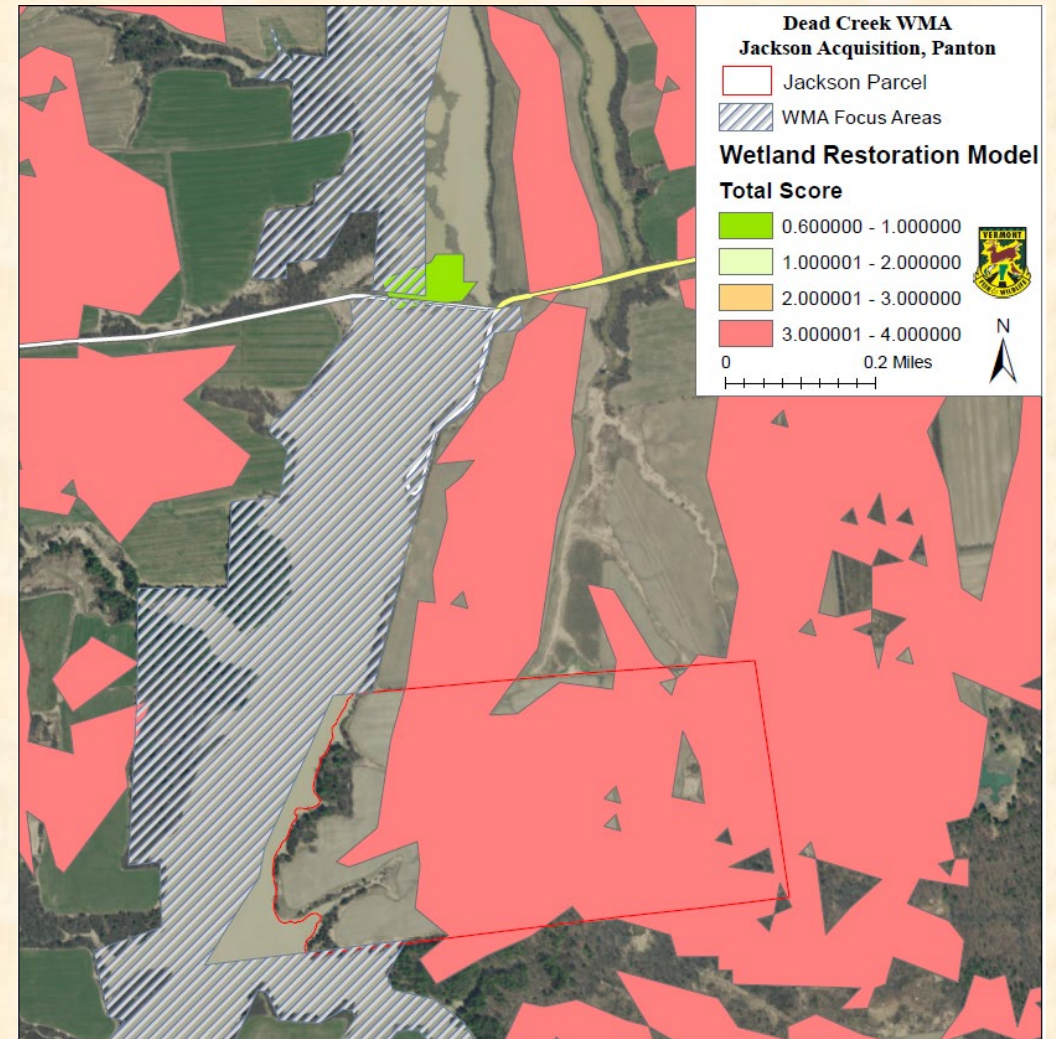
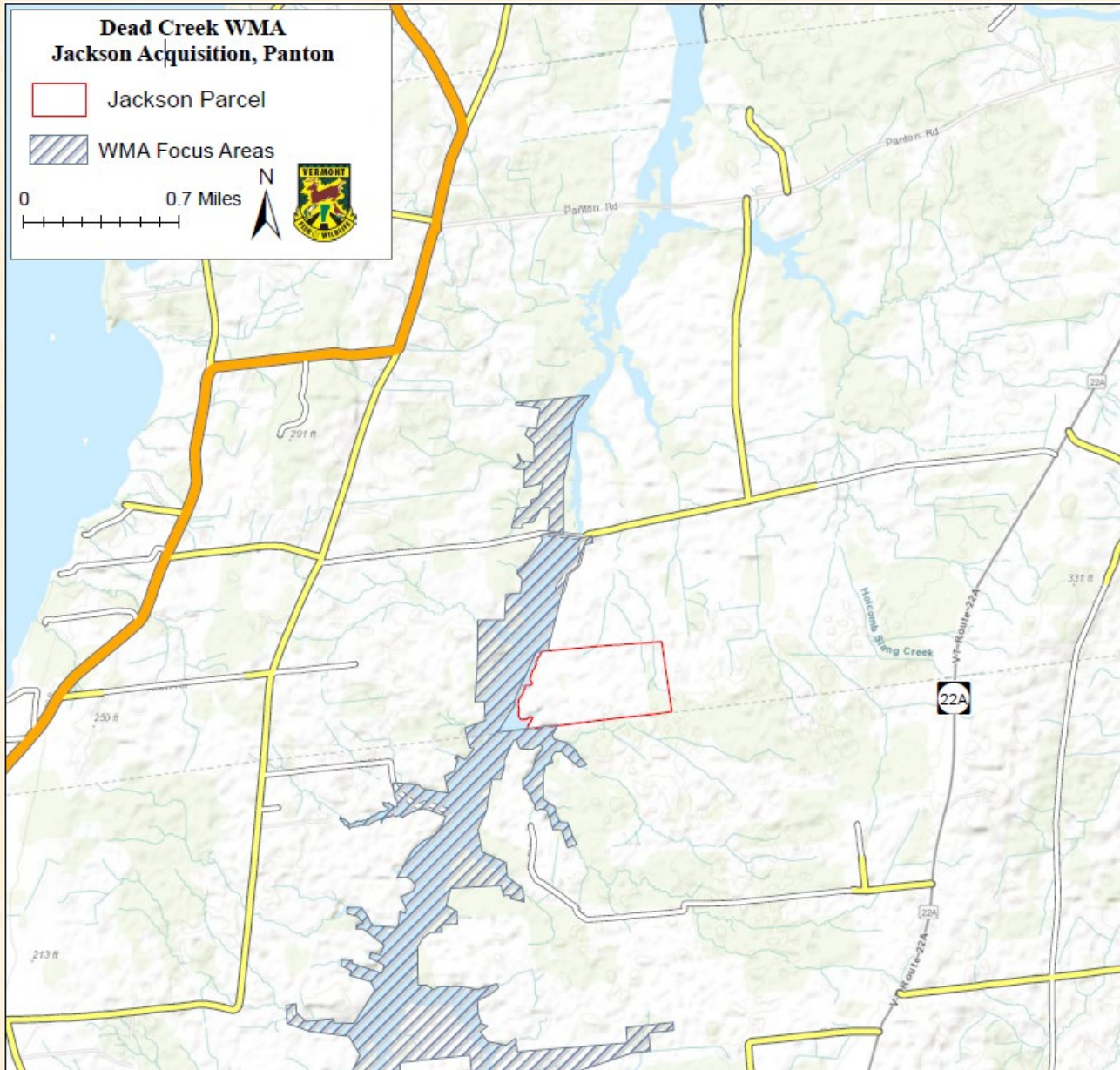
Lemon Fair WMA - Quesnel Parcel
322 Acres – 322 Restorable
Bridport, VT – Otter Creek Sub-Basin



Dead Creek WMA - Jackson Parcel

124 Acres – 119 Restorable

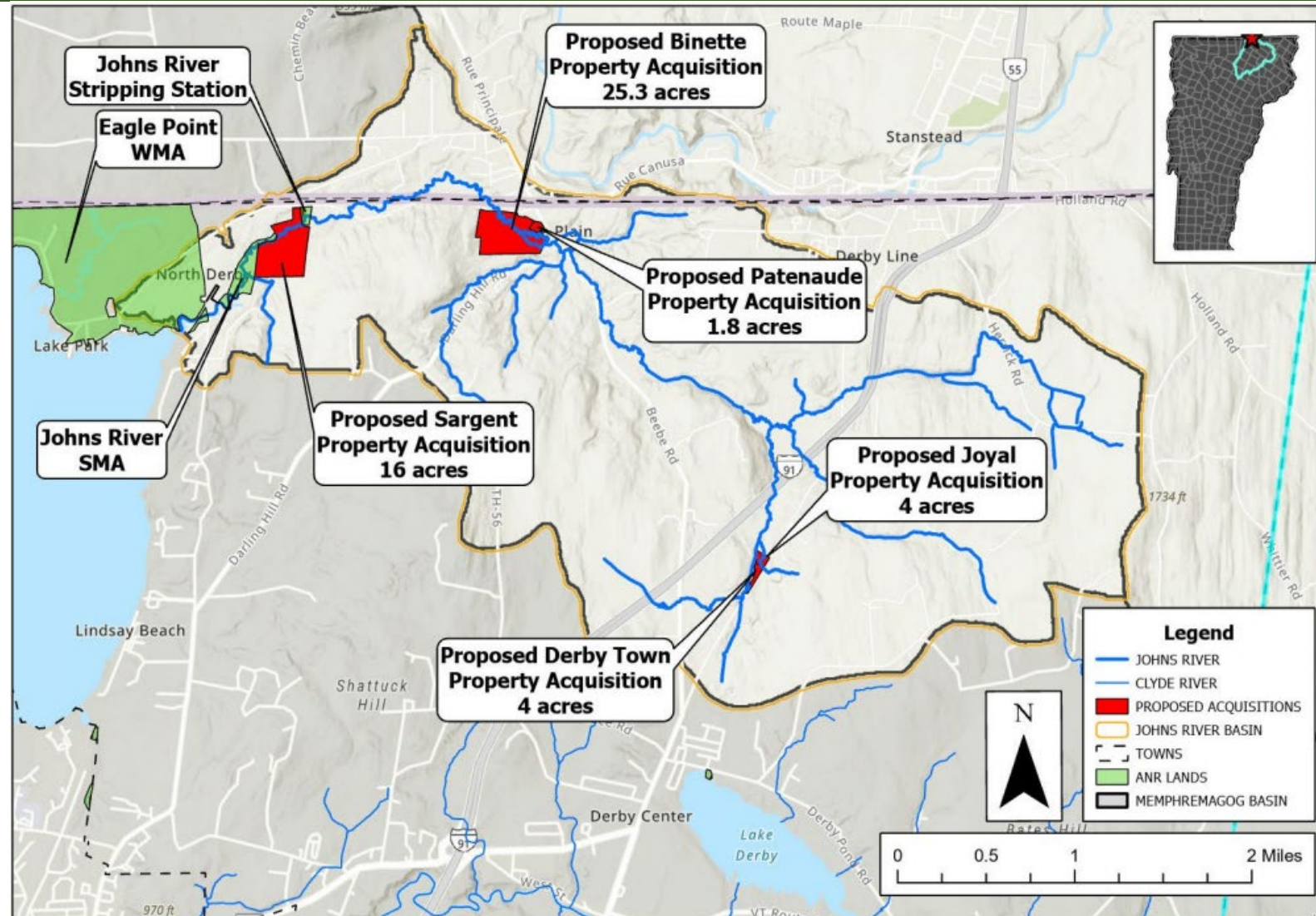
Panton, VT – Dead Creek Sub-Basin



The Vermont Department of Fish & Wildlife

Johns River

- ▶ Six recent acquisitions along the Johns River
- ▶ Restoring riparian areas, wetlands, and floodplain
- ▶ Increasing public access and resiliency



**Proposed Streambank Management Area Conservation Acquisitions
Johns River Basin - Derby, VT**

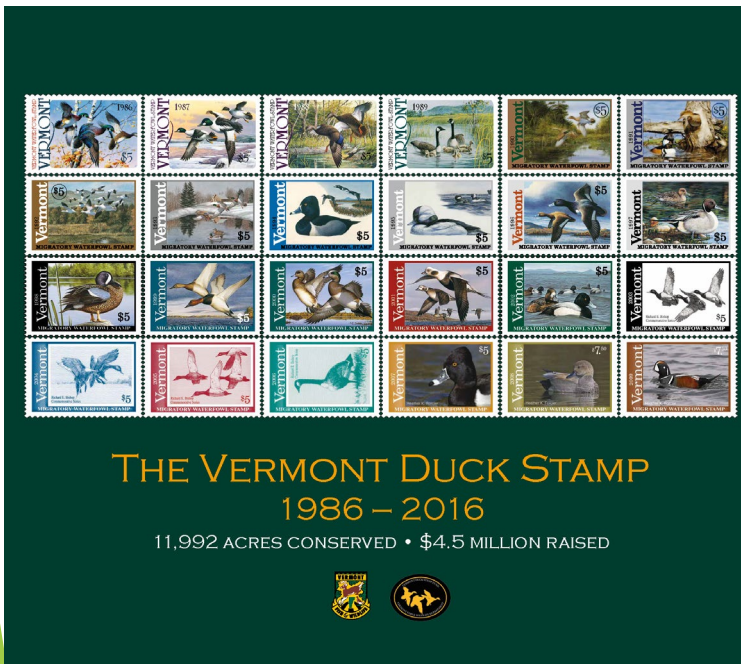
Map generated on 7/28/2023 by Patrick Hurley - Memphremagog Watershed Association, Newport, VT



The Vermont Department of Fish & Wildlife

Vermont Duck Stamp Program

- First stamp released 1986
- Over 6 million raised by stamp sales
- 12,000 acres of wetlands conserved through nearly 100 projects



The Vermont Department of Fish & Wildlife

LCBP/EPA- Funded Wetland Acquisition and Restoration Grant



Additional Conservation Funding

- ▶ Vermont Habitat Stamp
- ▶ US FWS Pittman Robertson Act Funds
- ▶ Vermont Housing and Conservation Board
- ▶ Ducks Unlimited In-Lieu Fee Program
- ▶ Clean Water Board Funding
- ▶ Private Fundraising
- ▶ Great Lakes Fisheries Commission