

Introduction to the Vermont Land Trust

Abby White and Pieter van Loon
January 15, 2025



Our purpose

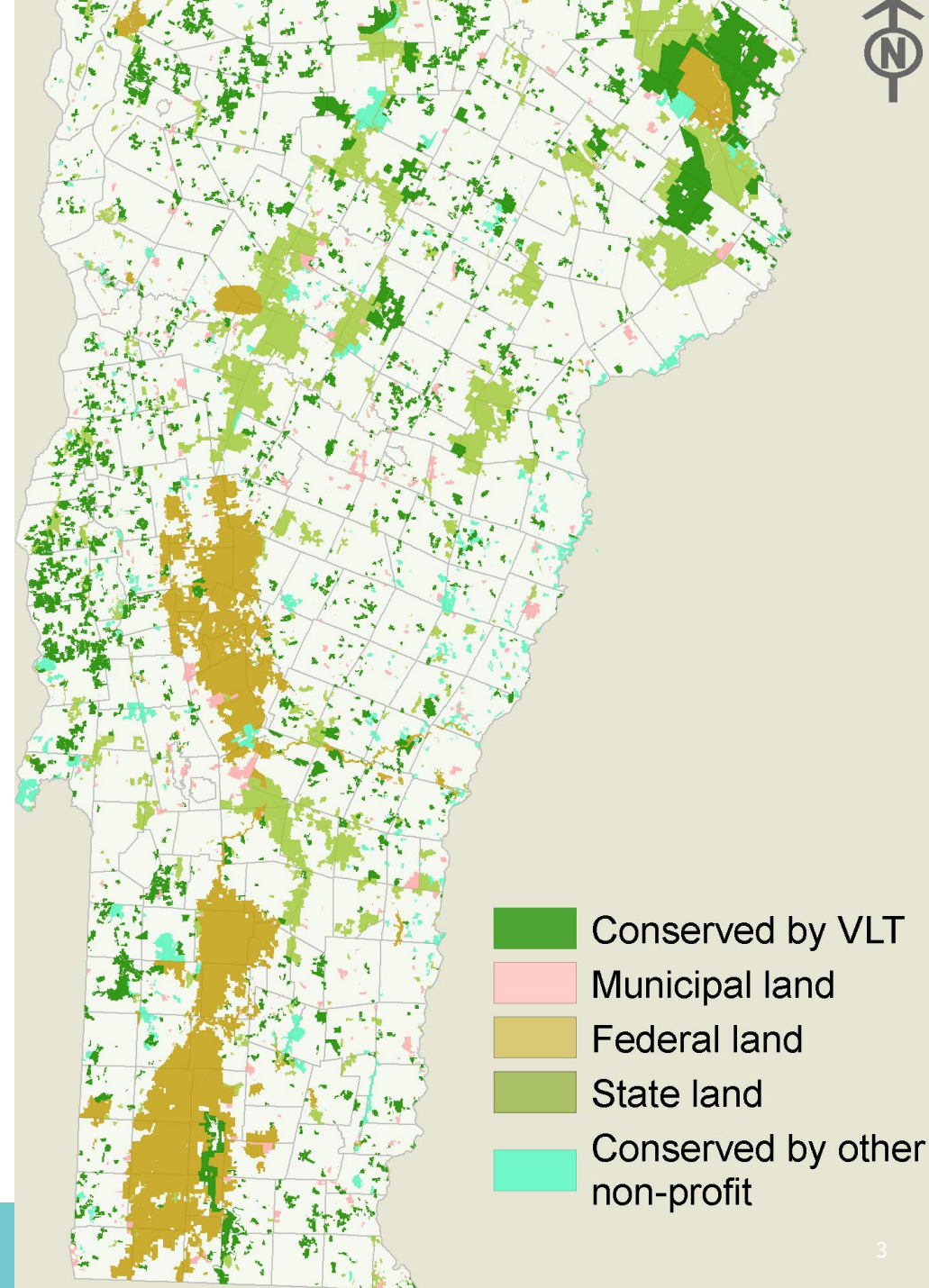
Rooted in Vermont since 1977, the Vermont Land Trust helps people protect, care for, and connect to the home we share.



Mad River Valley

About us

- Founded in 1977
- Conserved 11% of Vermont, over 647,000 acres
- Protected 1,100+ farms and 450,000 acres of forestland
- Steward 2,300 easements
- Own 44 properties
- 3,100 members
- 47 employees
- FY25 Operating Budget: \$7.8M
- 5 offices: Montpelier, Richmond, Newport, Woodstock, Brattleboro





What we do

Help people and communities

- Protect land
- Care for land
- Connect to land



How we do it

- Conservation easements
- Stewardship
- Land ownership
- Ecological restoration
- Forestry and land management
- Farmland access
- Events, storytelling, and education



Lucas Dairy Farm, 390 acres, Orwell

2024 Highlights

- 8,773 acres protected
 - 6,300+ acres of forestland
 - 2,400 acres of farmland
- Helped 7 farm families buy land
- Protected 38 miles along rivers and 248 acres of wetlands
- Planted 7,770 trees and shrubs
- Grew 15,000+ lbs. of food for people in need
- Hosted 1,000+ people at educational events

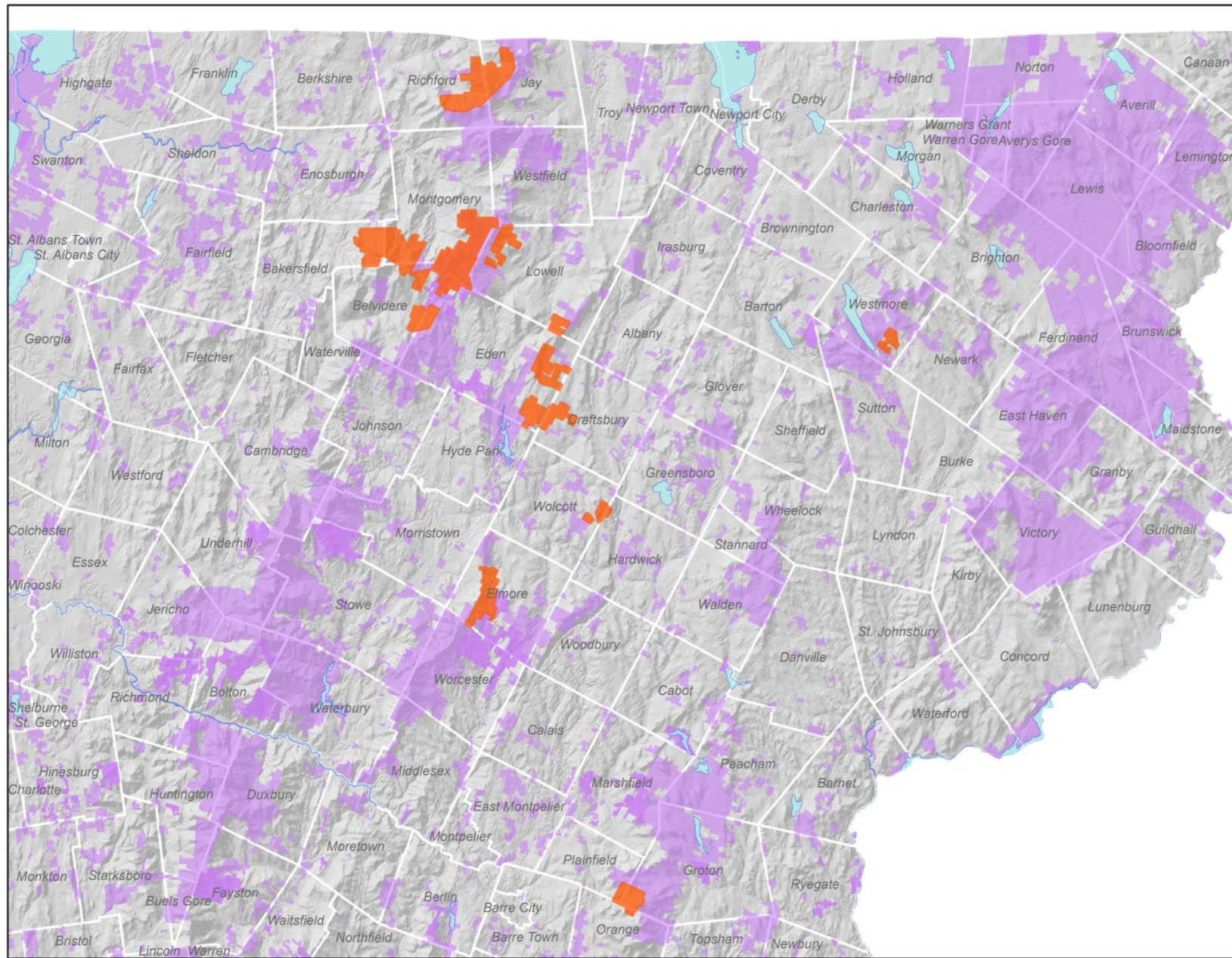
Climate resilience programs

- Wetland and ecological restoration
- Overlays and water quality protections
- Forestland conservation
- Soil health
- Landowner services/education



VLT-owned land, Andover

Atlas Timberlands



Valley Dream Farm, Cambridge

- 360-acres conserved in 1992 by the Tisbert family, funded by VHCB.
- Diversified organic veggies and flowers
- Farm store and events
- Hosts bike trials
- Enhanced protections on 64 acres added in 2023, funded by DEC.



Vermont Land Trust



UNITING LAND AND LIVES

abby@vlt.org and pieter@vlt.org