

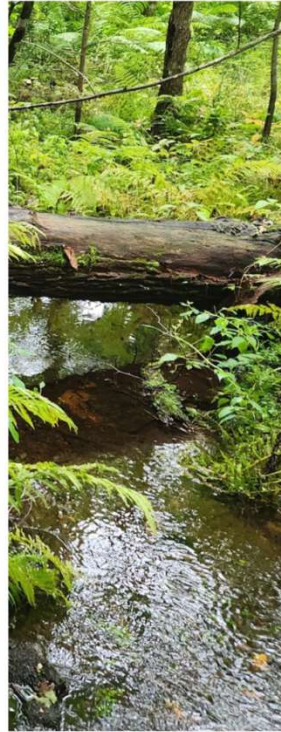
Monkton Town Forest

- Intro
- Town Plan
- Committee history



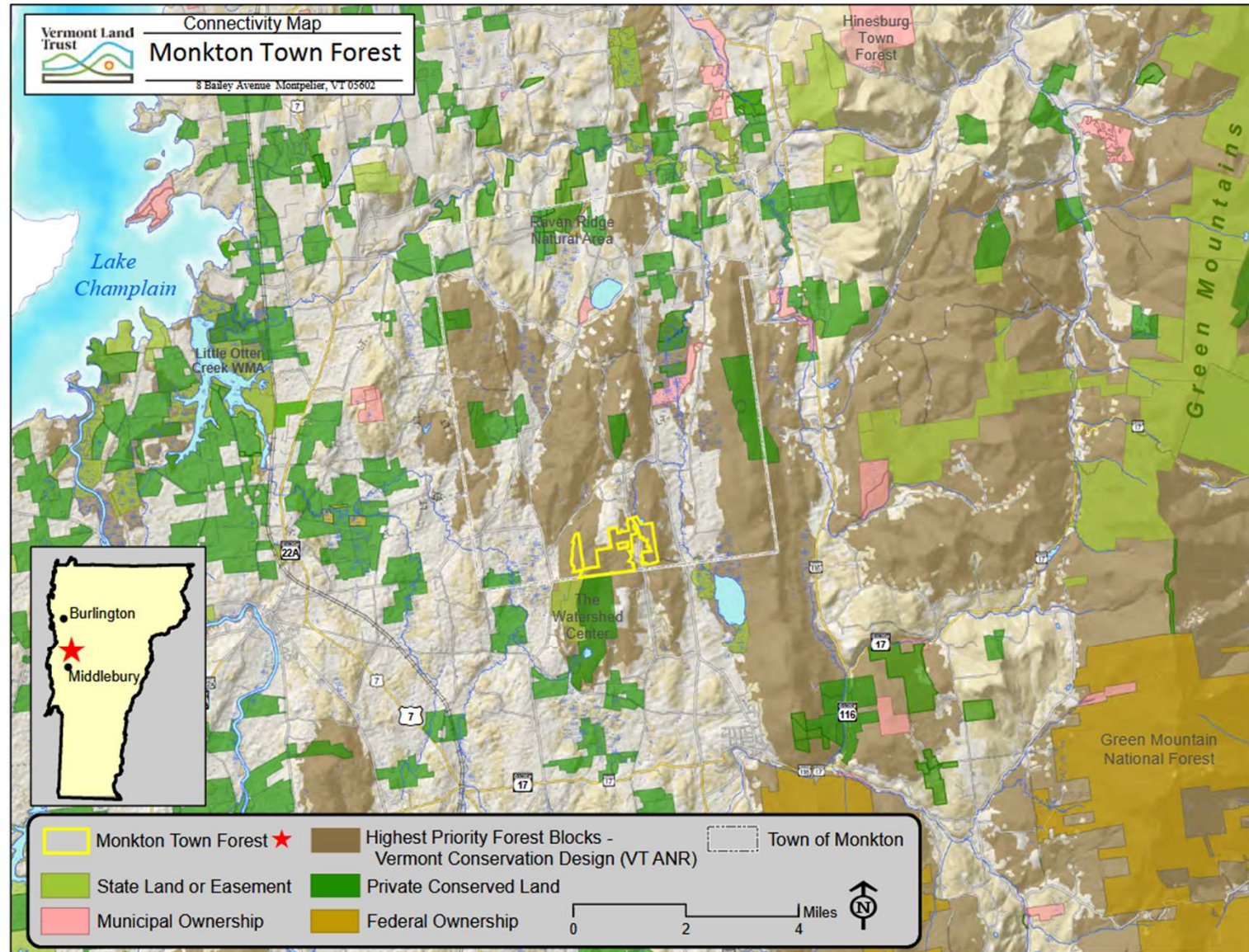
Suitable parcel

- Gentle accessible terrain close to access points.
- Multiple ponds and water bodies
- Miles of headwater streams, two watersheds flowing into Lake Champlain
- Incredible ecological features, with rare, threatened and endangered species, natural communities, wetlands, & multiple vernal pools
- Some remote, rugged areas with great wildlife habitat
- All within a large block of connected forestland prioritized at the state level for conservation



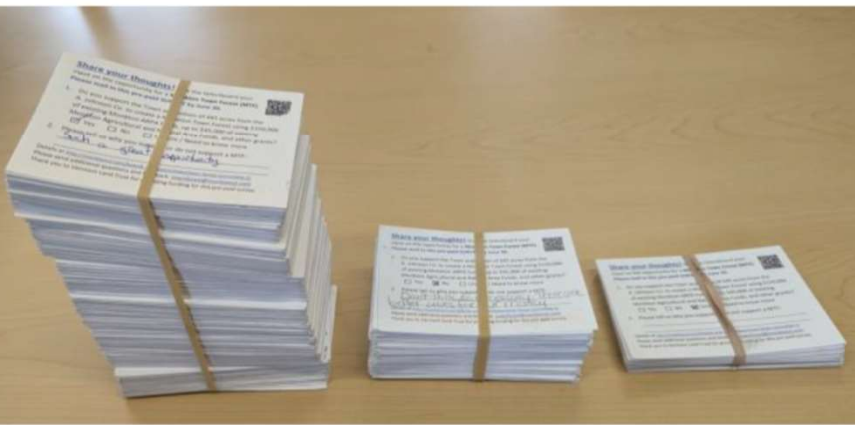
Growing connection of protected lands

- Green Mountains to Lake Champlain
- Statewide Highest Priority Block (VT Conservation Design)
- Adjacent to 1,000 acres of conserved land (the Watershed Center)



Community Engagement

- Early input workshop Sept 2021
- Site walks, community events, FPF, Facebook, Addison Independent 2023/2024
- Preliminary survey mailed to all voters to gauge support for a forest & use of town funds
- Community events and meetings
- Online survey focusing on community values and uses of the land to inform ongoing planning
- Long-term Management Plan coming soon



Financial Highlights

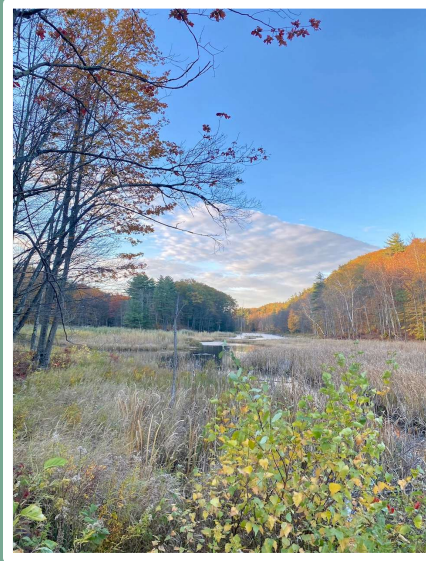
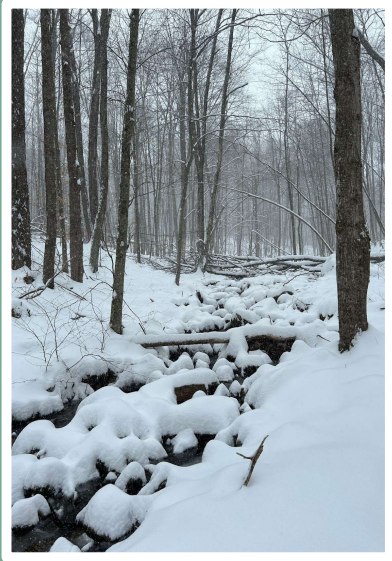
- \$371,000 of VHCB funds supported this \$1.15M project
- Leverage of over \$2 raised for every \$1 of VHCB funds!
- VHCB's early commitment was key to securing other funding
- \$400,000 of USDA Forest Service Community Forest Program funds were awarded two months after VHCB
- The town put over \$210,000 toward the project, from its conservation fund and ARPA funds and holds \$30,000 in a management fund to further establish the Town Forest and leverage small grants
- Community members donated \$55,000!



An aerial photograph of a forested landscape. In the foreground, a dark, calm lake is visible, surrounded by dense trees. The middle ground shows a vast expanse of forest, with some evergreen trees interspersed among the deciduous trees. In the background, rolling hills and mountains are visible under a clear blue sky. The overall scene is a mix of green and brown, suggesting a late autumn or early winter setting.

Looking ahead

- Greater resilience in an uncertain climate future
- Supports the health of two watersheds and Lake Champlain
- The project brings the town and state closer to 30x30
- 15% of Monkton is now covered by a conservation easement
- The connection between affordable housing and conservation – both are land uses and should complement rather than oppose one another
- VHCB is well positioned to navigate the balance of supporting more affordable housing while also protecting forest blocks and connectivity
- Please continue to support VHCB in making projects like the Monkton Town Forest possible, particularly in these challenging times.



On behalf of our community,
the forest, plants, water and wildlife
Thank you!