

BAY RIDGE APARTMENTS & SOLAR

Kathy Beyer
Senior VP Real Estate Development
Evernorth



evernorth
Investing in communities. Building possibilities.

Bay Ridge Site Plan

By reducing the use of fossil
fuels for heating, Bay Ridge
will reduce carbon emissions
by
189 tons per year.



4 LOCATOR MAP
Scale: 1"=1500'



3 SITE PLAN
Scale: 1"=30'-0"

BAY RIDGE
SHELburne, VERMONT

COPYRIGHT © 2022 ALL RIGHTS RESERVED
DUNCAN • WISNIEWSKI ARCHITECTURE
A PROFESSIONAL CORPORATION

LOCAL PERMIT SET

**Duncan
Wisniewski**
ARCHITECTURE

255 SOUTH CHAMPLAIN STREET
BURLINGTON, VERMONT 05401
T. 802.264.6903

DATE: 04.20.2022
DRAWN: SJB, ABC

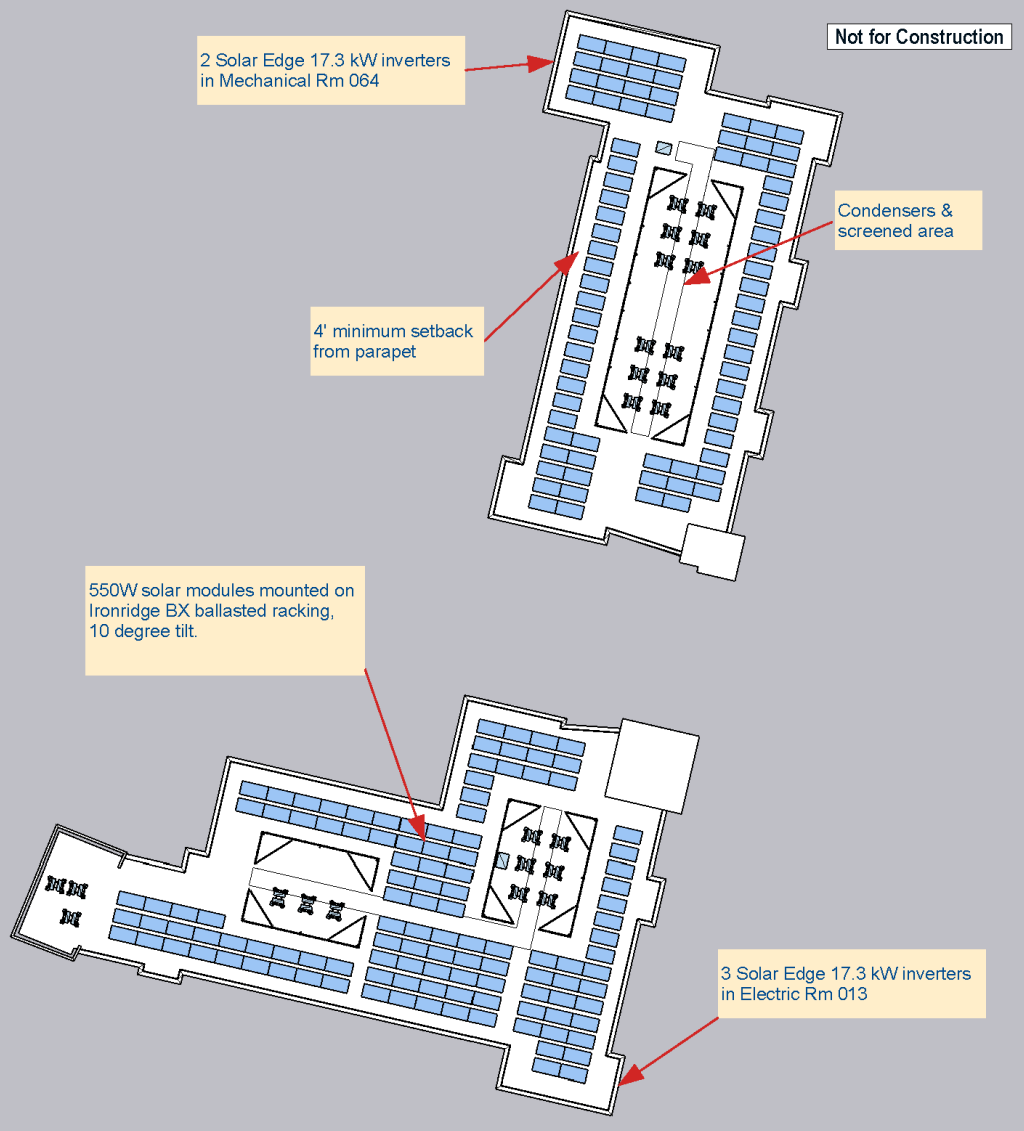
L1-1.7

Bay Ridge Apartments



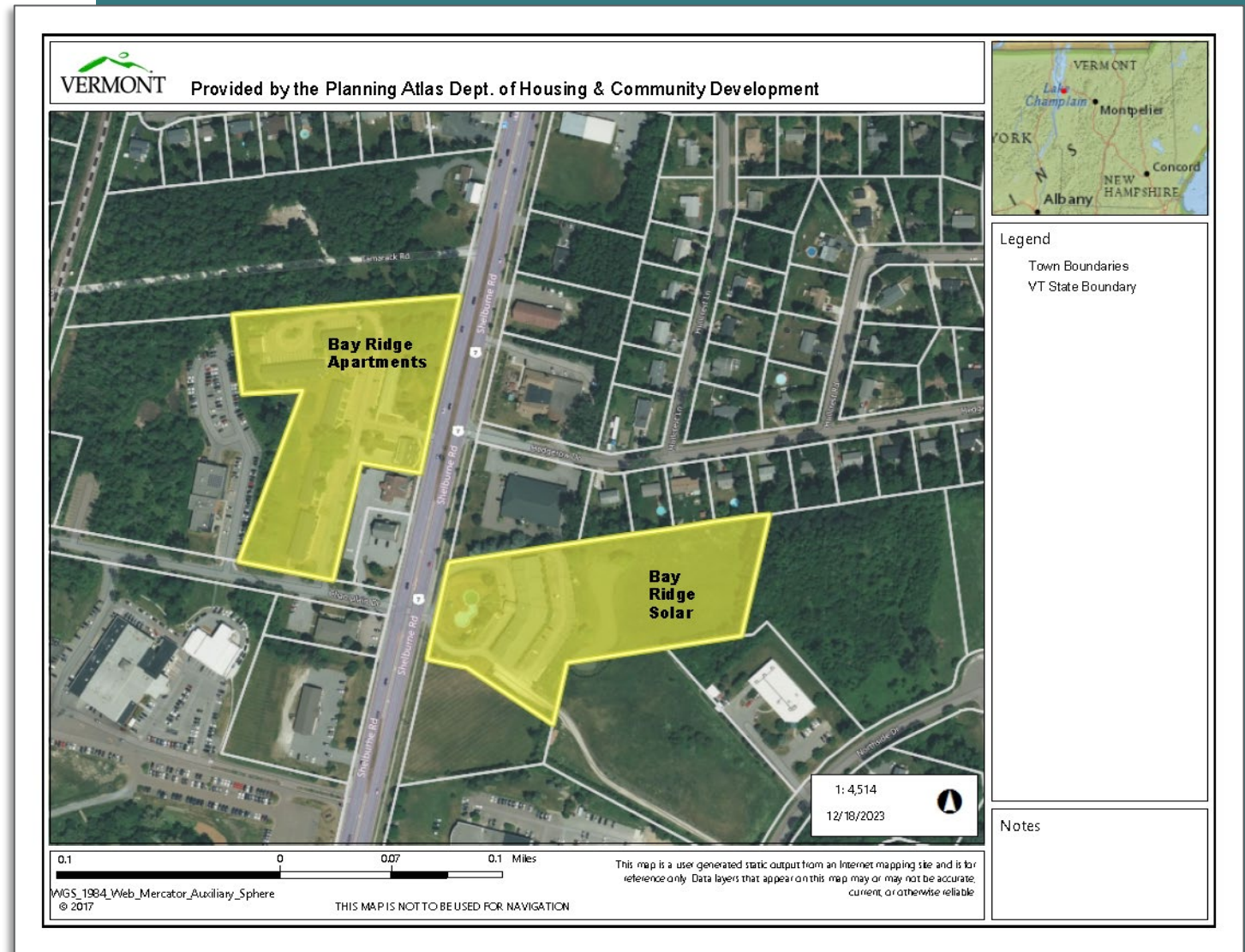
Bay Ridge Rooftop Solar

Adding solar to Bay Ridge Apartments is critical to the operating sustainability of the building.



Bay Ridge Aerial View

The State's Energy
Plan stresses the need
“to ensure that the
impacts of renewable
energy are equitably
distributed



Bay Ridge Solar Site Plan



Bay Ridge Solar Rooftop & Off -Site

	Rooftop	Offsite	Combined
kwh production	113,500	270,800	384,300
net-metered credits generated	\$17,971	\$32,875	\$50,846
% total usage offset	15%	36%	51%