

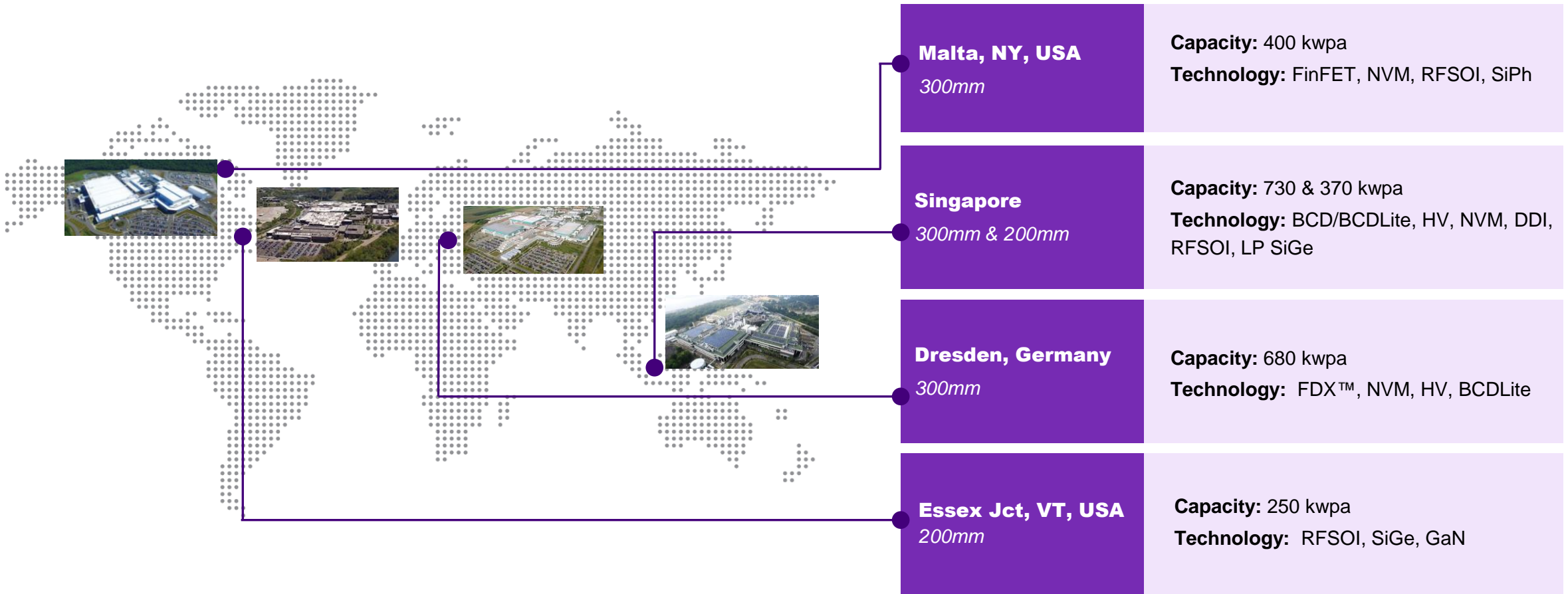


# Intro to GF Power

**January 2025**



# Global manufacturing footprint - current



Products on the differentiated technology platforms our customers need  
where they want them produced

**Note:**

- 1. Kwpa is defined as 2022 capacity in thousand wafers per annum
- 2. 200mm capacity translated to 300mm equivalent

# Fab 9 Campus



Market Segments

Mobile, wireless infrastructure, automotive, industrial, and medical



Fab 9 Facts

- US Trusted Foundry  
~ 43% of Vermont State Exports



Manufacturing capacity

GF's 2<sup>nd</sup> Largest 200mm Fab to Singapore's Giga



Employees

~ 1,800  
Largest for-profit private employer in the state



Operating since

1957 Site Origin  
2015 GF acquired



Essex and Williston Campus

Essex ~ 235 acres  
Williston ~ 440 acres



# Uniquely positioned in markets that matter



**Software Defined**  
Enhanced technology platforms for next generation vehicles

**Secure and Connected**  
Innovative solutions for AI at the edge

**Performance, Power, & Speed**  
Immersive experiences with industry-leading technologies

**Future Ready**  
Ultra-fast, ultra-efficient connectivity in the age of AI

**Secure, Trusted and Resilient Supply**  
Mission critical technologies with reliable regional supply

# GF Power

Oct 2022, Public Utility Commission approved GF Power, LLC. as a VT. Regulated Utility

- Limited to serving a single customer, GlobalFoundries

GF Power operations started Feb 2023

- Customer of ISO New England and VELCO for transmission & grid services
- Full-services, transitional PPA w/ Green Mountain Power until Sep 2026

Why GF Power

- Vermont's single largest electricity user (similar to entire city of Burlington)
- Maintain competitiveness within semiconductor industry
- Allows GF to maintain position as VT's largest for-profit employer

# Maximize 2024 Renewable Energy Standard for GF & VT

## **GF Power presents unique opportunities**

- Sole customer is GF
- Renewable generation will be utilized on-site by GF
- Transmission and distribution infrastructure on-site
- Previously developed site with appropriate locations for solar

## **Committed to 100% Renewable by 2035 (Tier 1)**

### **On-Site & In-State New Renewables – 20% by 2035 (Tier 2):**

- Utilize 700-acre campus in Essex Junction and Williston
  - 17MW currently in development
- Renewable generation will be used on-site by GF
- On-site solar for GF for Tier 2 meets approximately 25-30% of 2035 requirement

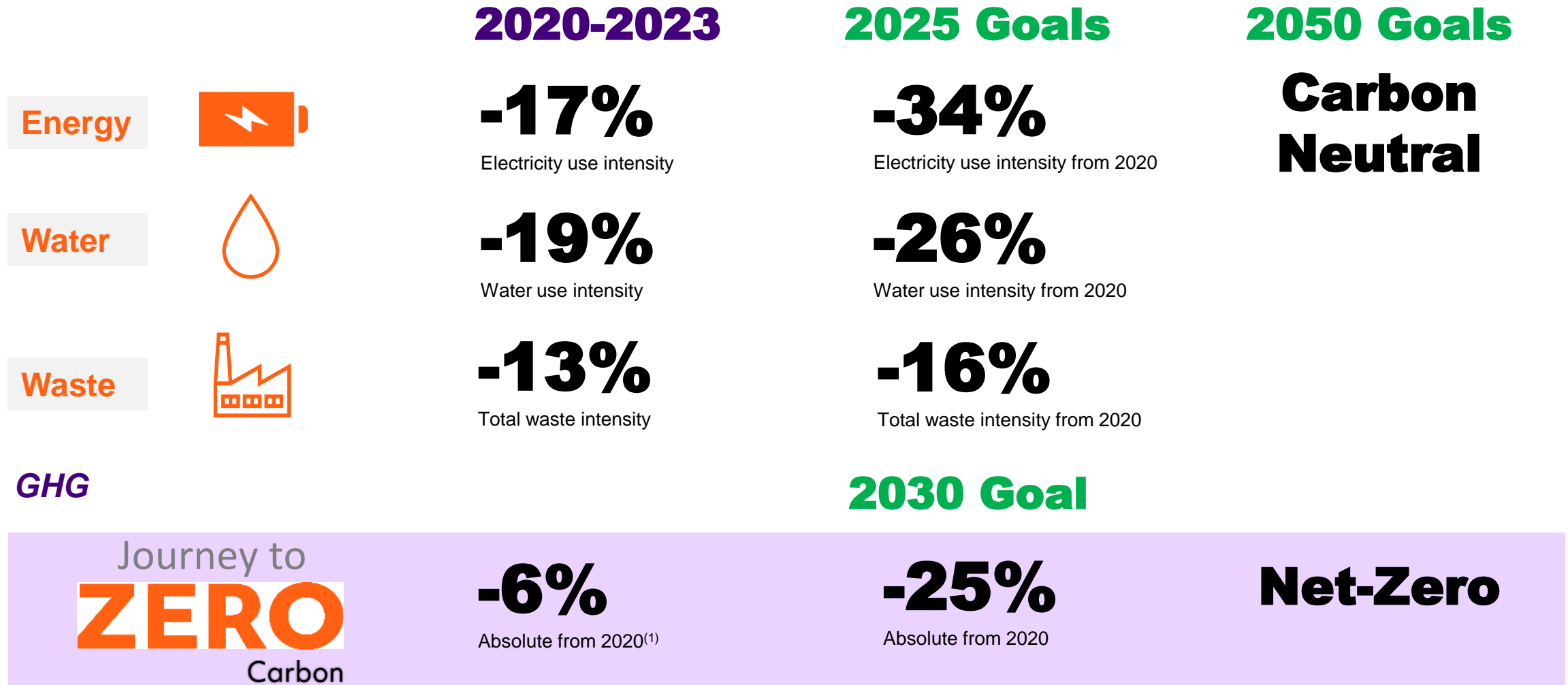
### **Energy Transformation / GHG Emissions Reductions from Manufacturing – 12% by 2032 (Tier 3):**

- Maximize GF & VT GHG reduction goals most effectively
- RES authorized GF to achieve Tier III reductions through manufacturing emissions reductions

### **Additional New Regional Renewables – 10% by 2035 (Tier 4):**

# Resource Management

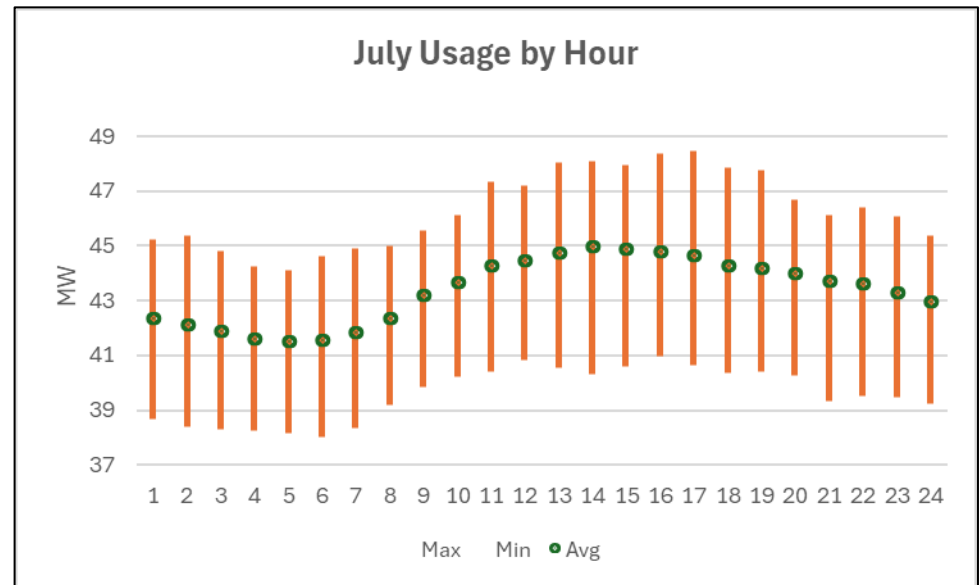
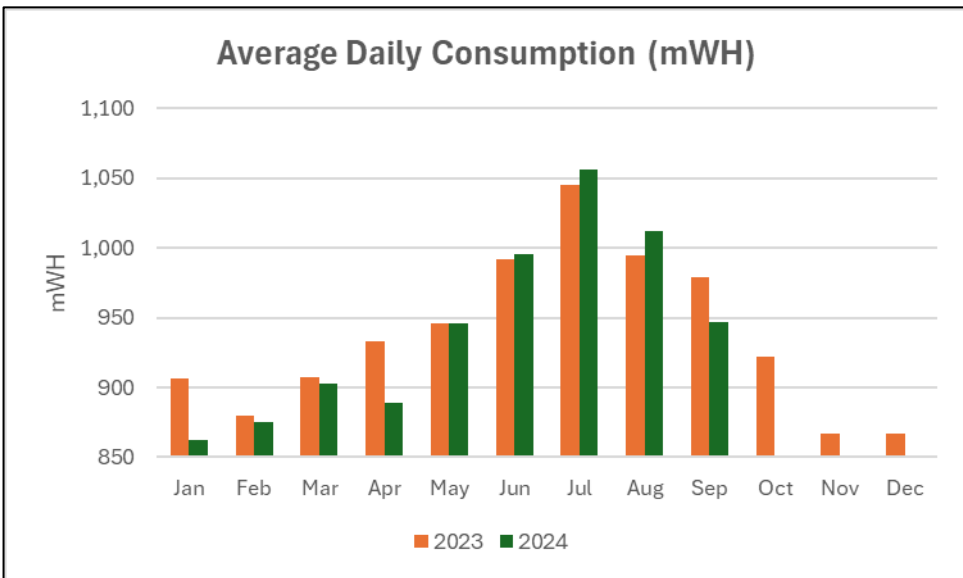
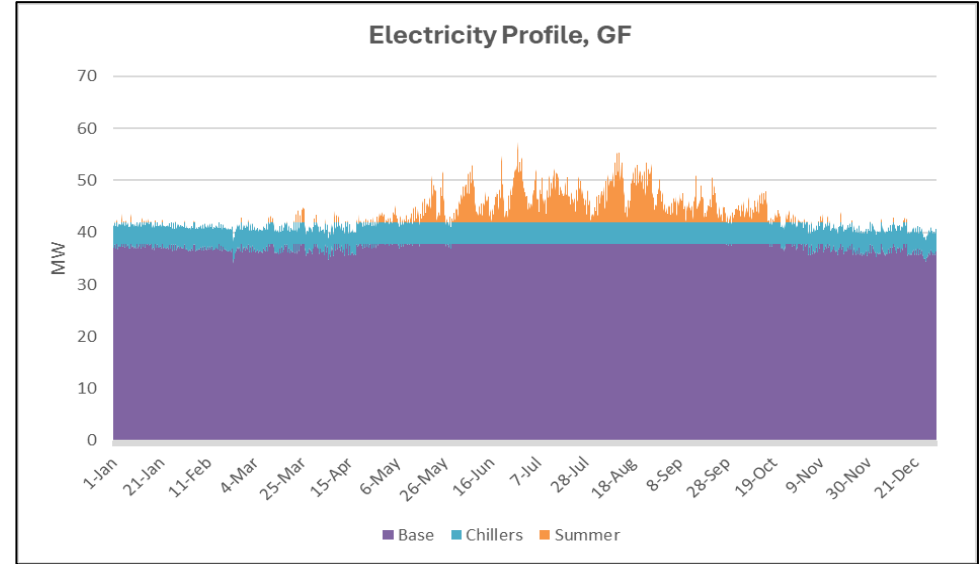
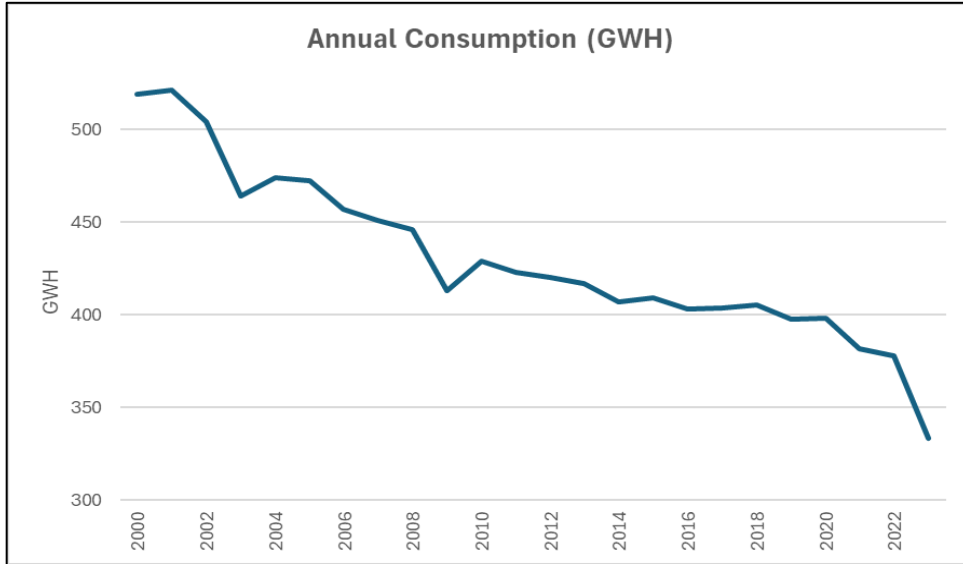
## Performance, Progress, Goals in Sustainability



**Note:**

1. GHG emissions include scope 1 and 2

# Fab 9 Electricity Profiles





# Solar: Phase 1 Projects



## **North Parking Lot - 3.25MW – CPG Approved Jan '25**

- Repurpose unused, abandoned parking lot

## **Chip Alley – 2.25 MW – CPG Approved Jan '25**

- Unused former farmland behind Williston buildings

## **Redmond Road & Mountain View - 1.4MW**

- Former farmland used for haying

## **Projects total 7 MW**

- Will produce 3% of GF's annual usage
- At peak production will produce up to 20% of current usage
- Flat rate 25-year solar power purchase agreement

# Solar: Phase 2 Projects



## **B967 Parking Lot - 2.9W**

- Repurpose lightly used, deteriorating parking lot

## **Triangle and Regional Test Center– 2.4 MW**

- (2) small areas previously used for farming (corn) and as a Regional Solar Test Center

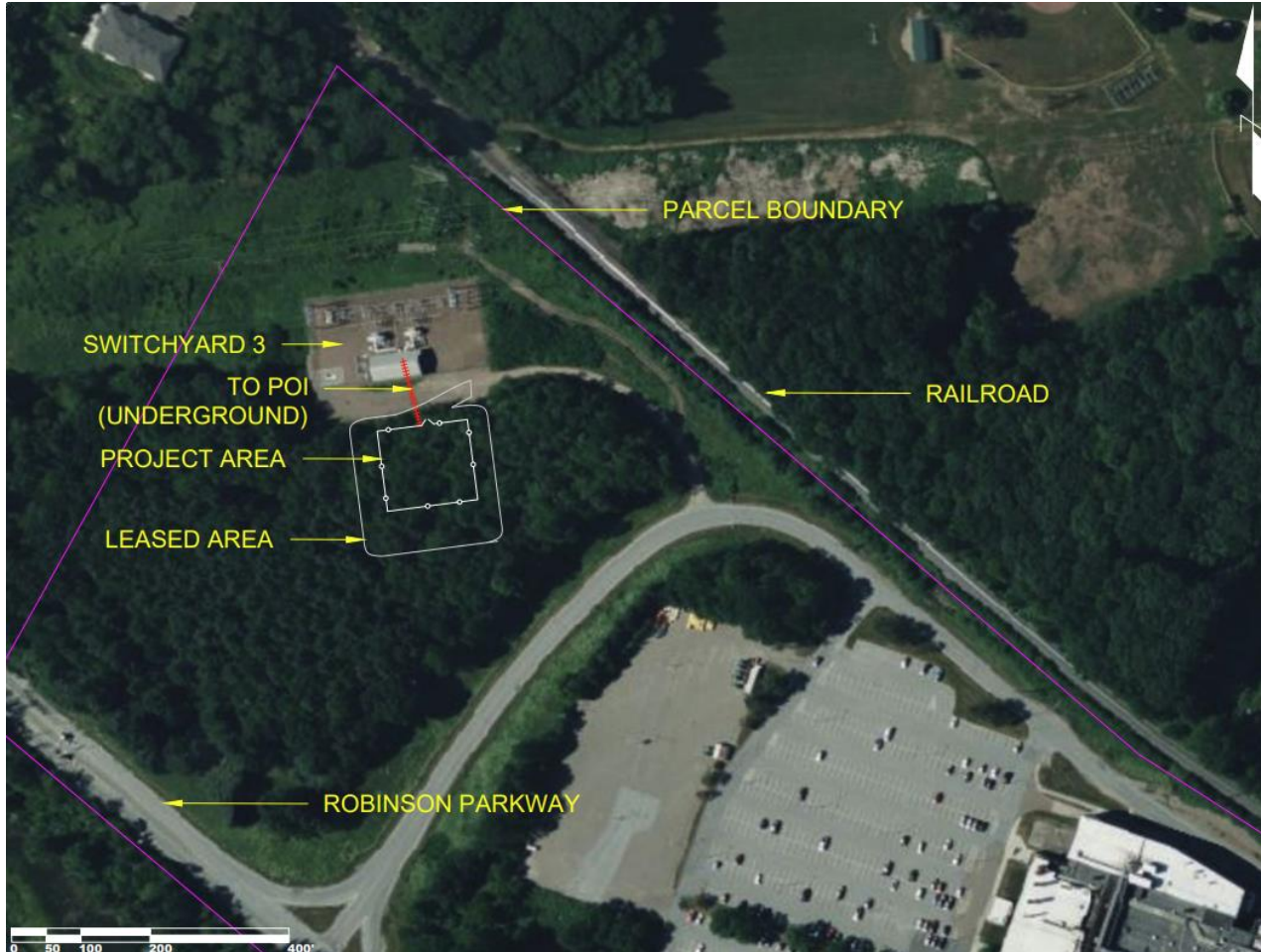
## **Ed's Project 2.6MW**

- Former farmland used for haying

## **Projects total 8 MW**

- Will produce 4% of GF's annual usage
- At peak production will produce up to 20% of current usage
- Flat rate 25-year solar power purchase agreement

# 15MW Battery



- Partnership with Lightshift Energy
- Install 15mw/50mWH (24 units) Batteries
- Connect to 13kV at GF Swyd #3 / VELCO #87
- Uses
  - Peak shaving
  - Renewables storage
- **CPG Application Filed 4Q24**
- Operational 2026/2027

# Look Ahead

## Maximize the Value of GF Power

- Negotiate Whole-Sale Electricity Contract for Oct 2026+
- Leverage Uniqueness of Utility / Manufacturer
  - On-Site Solar Projects
  - Utility-Scale Battery Project
  - Partner within state creating value with “Beyond Compliance” programs
- Energy Conservation
  - Continue Self-Managed Energy Efficiency Program
  - Implement more efficient manufacturing and infrastructure projects
- Enable Employee Electrification
  - (5) new dual port EV chargers installed January 2025



Thank You



This document is for informational purposes only, is current only as of the date of publication and is subject to change by GlobalFoundries at any time without notice.

GlobalFoundries, the GlobalFoundries logo and combinations thereof are trademarks of GlobalFoundries Inc. in the United States and/or other jurisdictions. Other product or service names are for identification only and may be trademarks or service marks of their respective owners.

© GlobalFoundries Inc. 2025. Unless otherwise indicated, all rights reserved.

Do not copy or redistribute, in whole or in part, except as expressly permitted by GlobalFoundries.

