

From: **Jonathan Dowds** <jonathan@revermont.org>

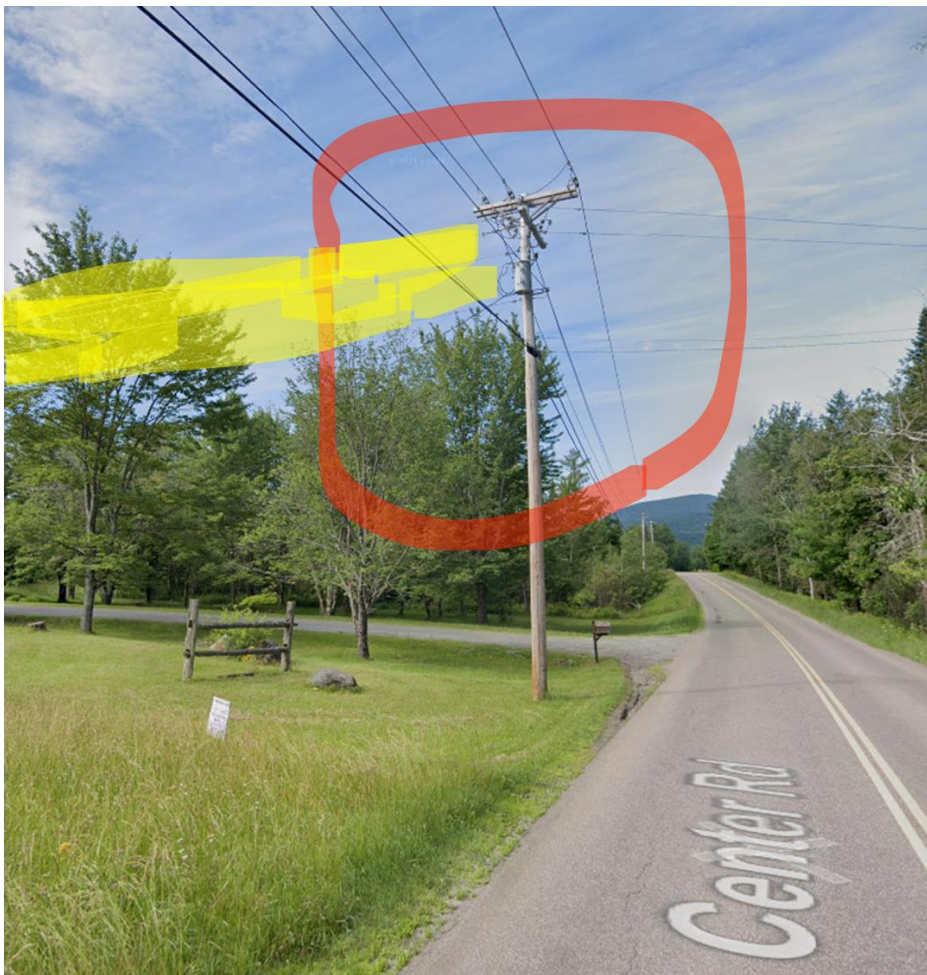
Date: Thu, Apr 10, 2025 at 11:06 AM

Subject: Interconnection point example

Hello Rep. Campbell,

Peter asked me to send you an example of an interconnection point. Vermont Interconnection Rule (5.500) defines the interconnection point as "the point on the Interconnecting Utility's existing system to which the Interconnection Requester proposes to interconnect."

Here is what that looks like on a utility pole for a 2.1 MW solar plant in Hardwick. The yellow highlights the line extension (new line, paid for by the project) that connects the project to the interconnection point. The interconnection point is inside the red circle and is literally the point where the line extension connects to the existing power pole.



Here is an aerial view of the project, again with the red showing the interconnection point and the yellow showing the line extension.



The language that Ben discussed this morning would allow multiple projects on the same parcel to connect to the existing system at that same location. This would enable both projects to utilize the same line extension all the way to the point of interconnection rather than splitting off and constructing a second line extension simply for the purpose of connecting at a different utility pole.

Let me know if this makes sense or if you have questions.

Jonathan

--

Jonathan Dowds (*he/him*)

Renewable Energy Vermont | Deputy Director

802-229-0099 | jonathan@revermont.org

www.revermont.org | 13 Baldwin Street, Montpelier, VT 05602