



H.716 –An Act Relating to the NM Formula



House Energy and Digital Technology February 13, 2026
Vermont Electric Cooperative

VEC Net Metering Facts

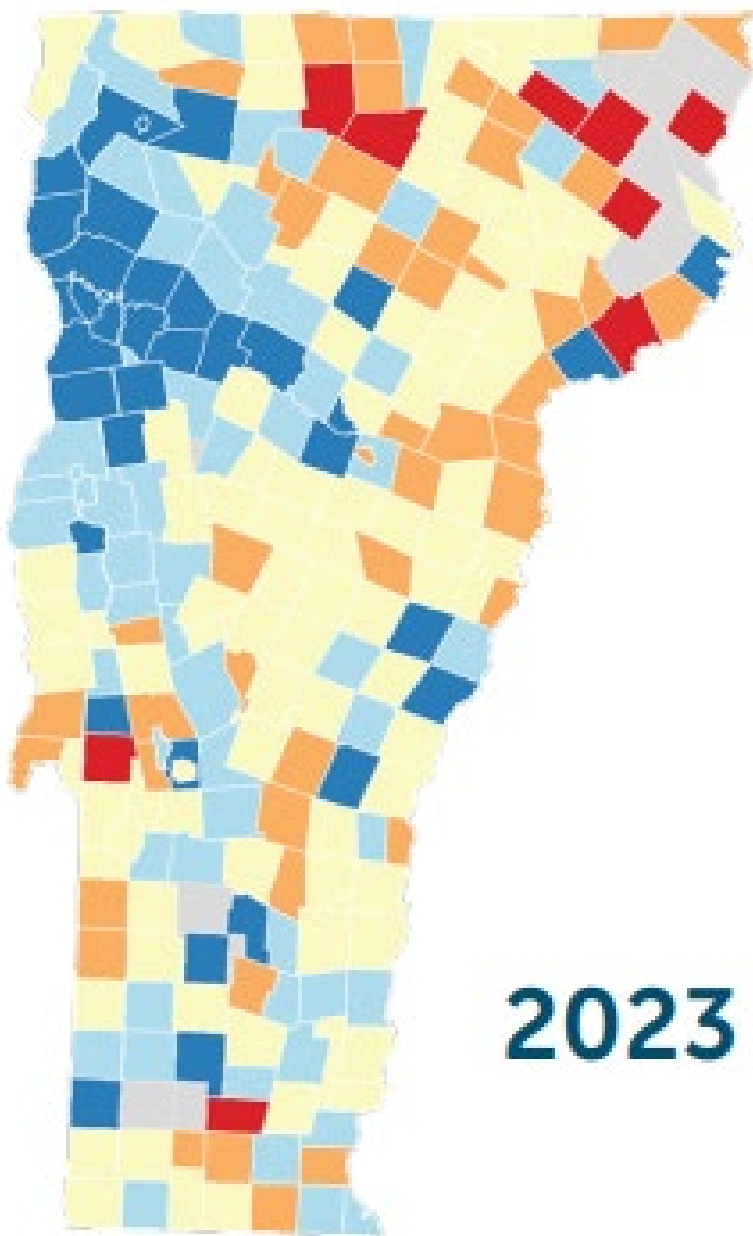
- **VEC's Power Supply is currently 100% Carbon Free and committed to 100% Renewable**
- **Need to keep rates as low as possible to support beneficial electrification**
- **VEC incurs approximately \$1,706,114 in upward rate pressure annually for the excess generation from net-metering facilities (~1.7% in rates).**
- **Current net metering is not equitable or well distributed across VEC service territory.**

VEC Net Metering Facts

- VEC is required to compensate net metering generation above the value it provides
- Total cost of net-metering estimated at \$6,075,815, averaging \$182/MWh
- Current prices for Tier 2 solar projects range from \$100 to \$110/MWh
- Market Value of Excess Generation estimated at \$1,533,568

	MWh	Dollars
Own Use	15,757	\$2,582,574
Excess Gen	17,580	\$3,239,682
Adders		\$253,559
Total Gen	33,337	\$6,075,815
	Avg \$/MWh	\$182

Energy Equity and Affordability

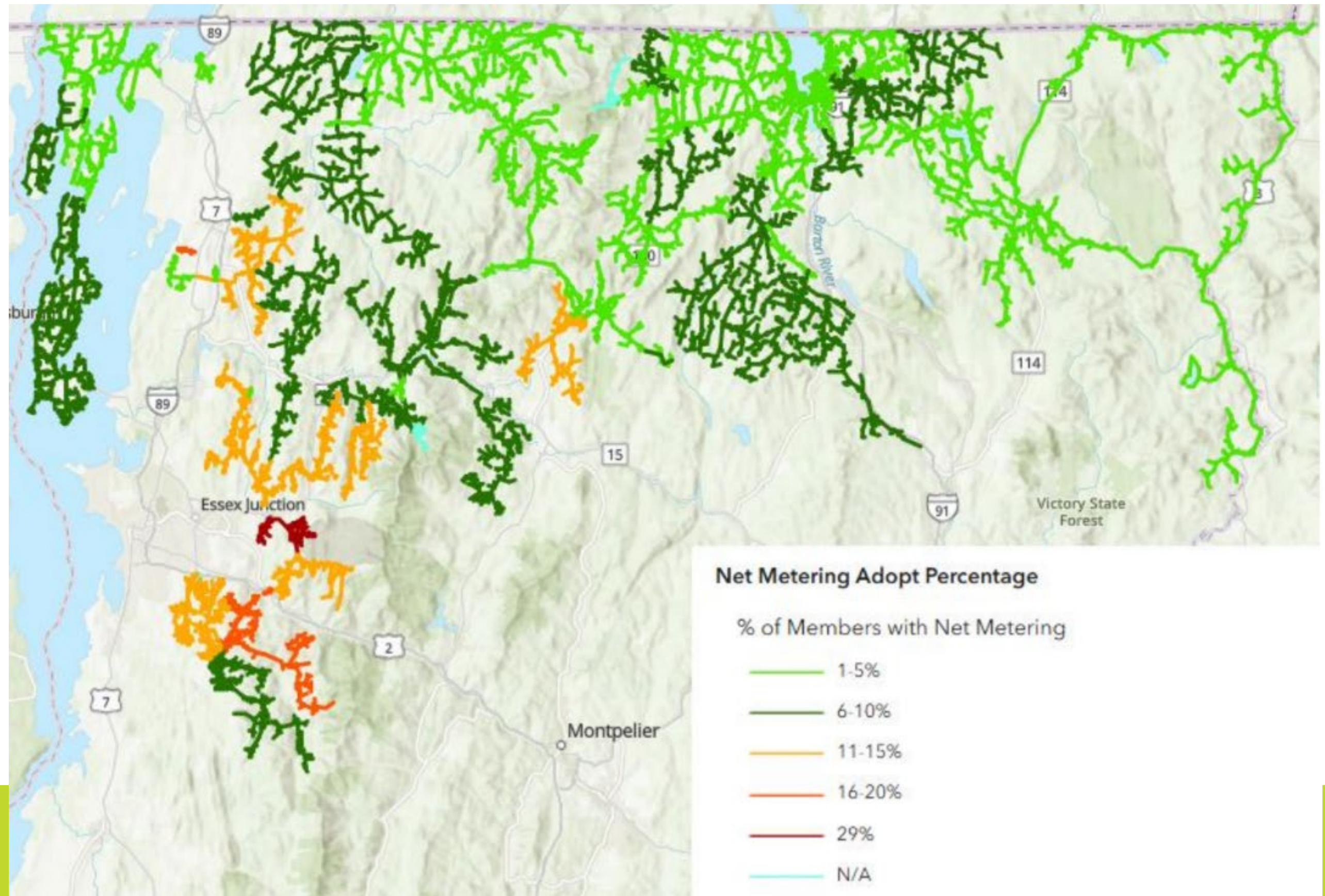


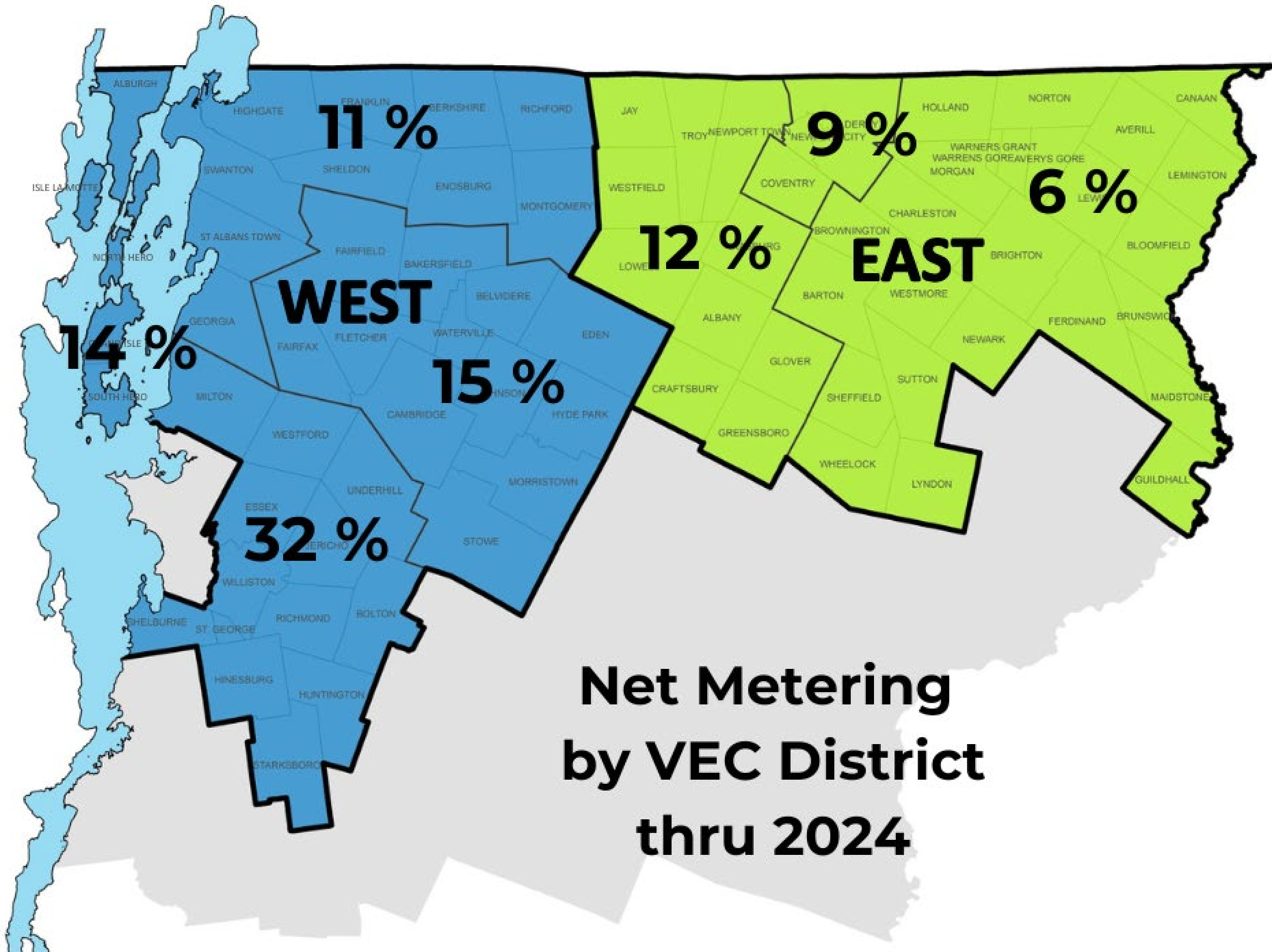
2023 Efficiency Vermont Energy Burden Report
Red areas indicate high burden and blue areas indicate low burden.

7 of top 11 Towns with largest energy burden

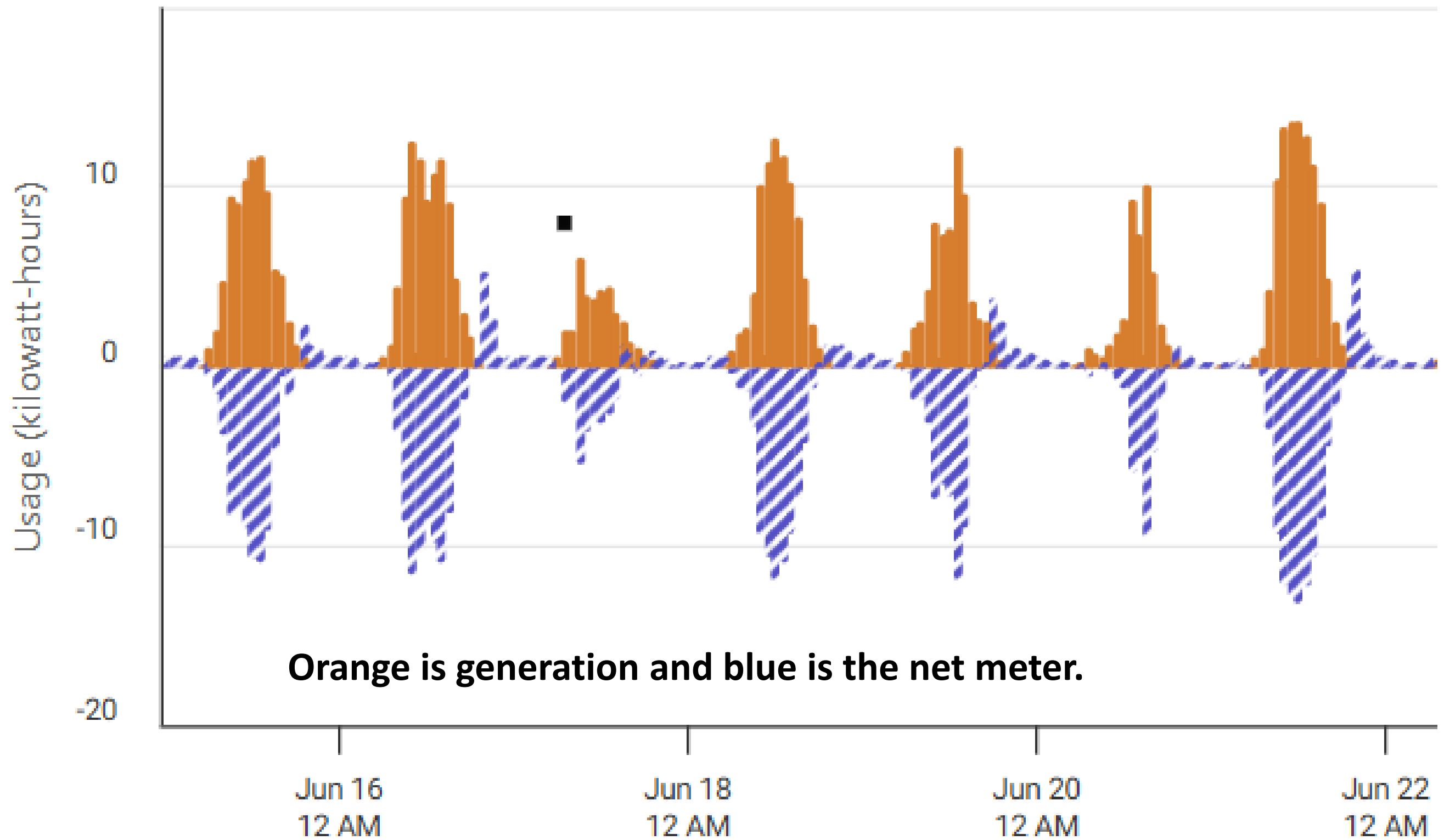
	B	C	
1	Montgomery	Franklin	23.1%
2	Charleston	Orleans	19.1%
3	East Haven	Essex	18.9%
4	Lowell	Orleans	17.1%
5	Concord	Essex	15.9%
6	Brighton	Essex	15.5%
7	Castleton	Rutland	15.2%
8	Dover	Windham	15.2%
9	Bloomfield	Essex	15.1%
10	Eden	Lamoille	14.8%
11	Jay	Orleans	14.7%
12	Pawlet	Rutland	14.7%
13	Windsor	Windsor	14.4%

About 3000 VEC members NM
(approx. 8% of homes)



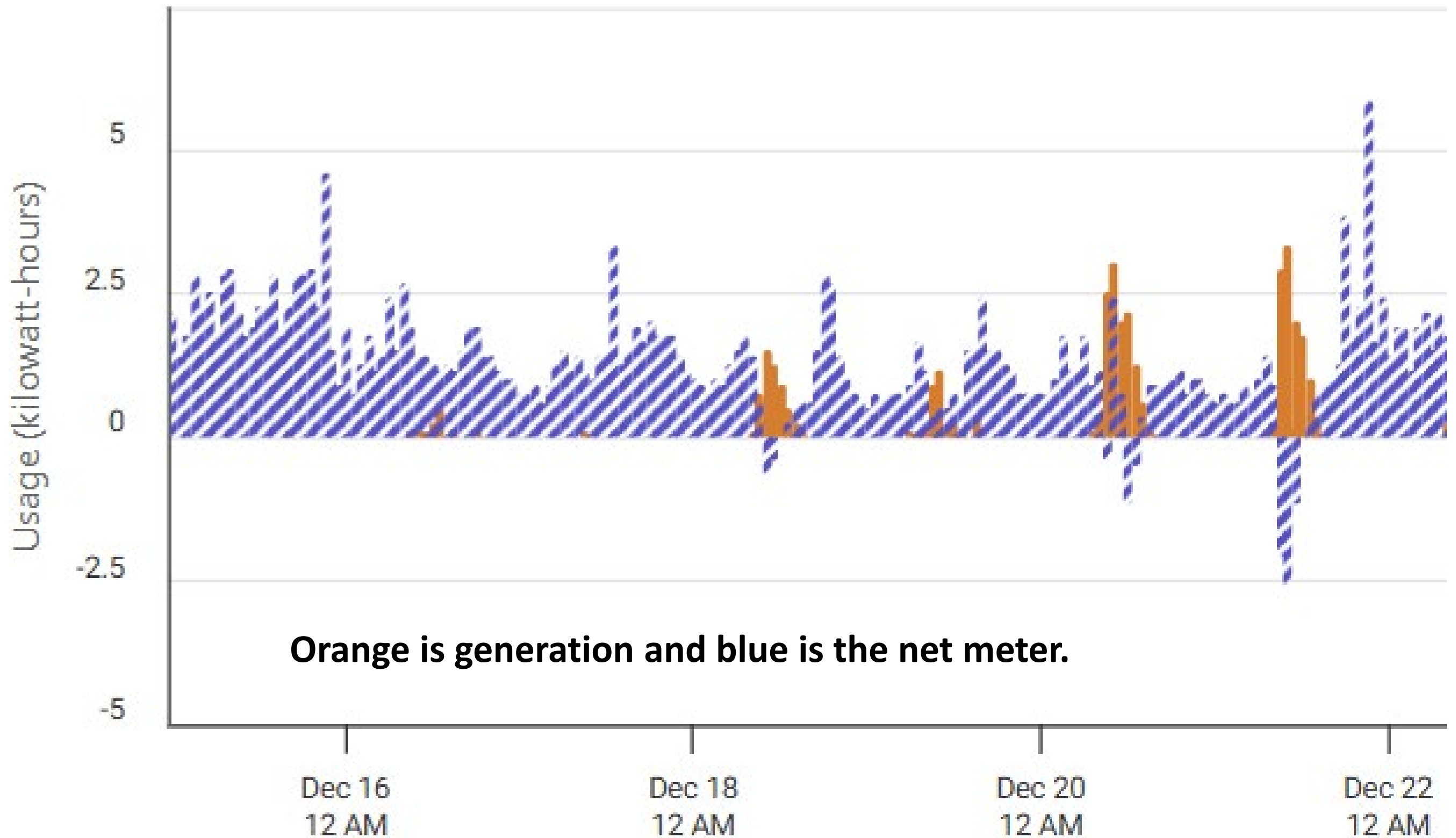


Own Use? Mostly Not



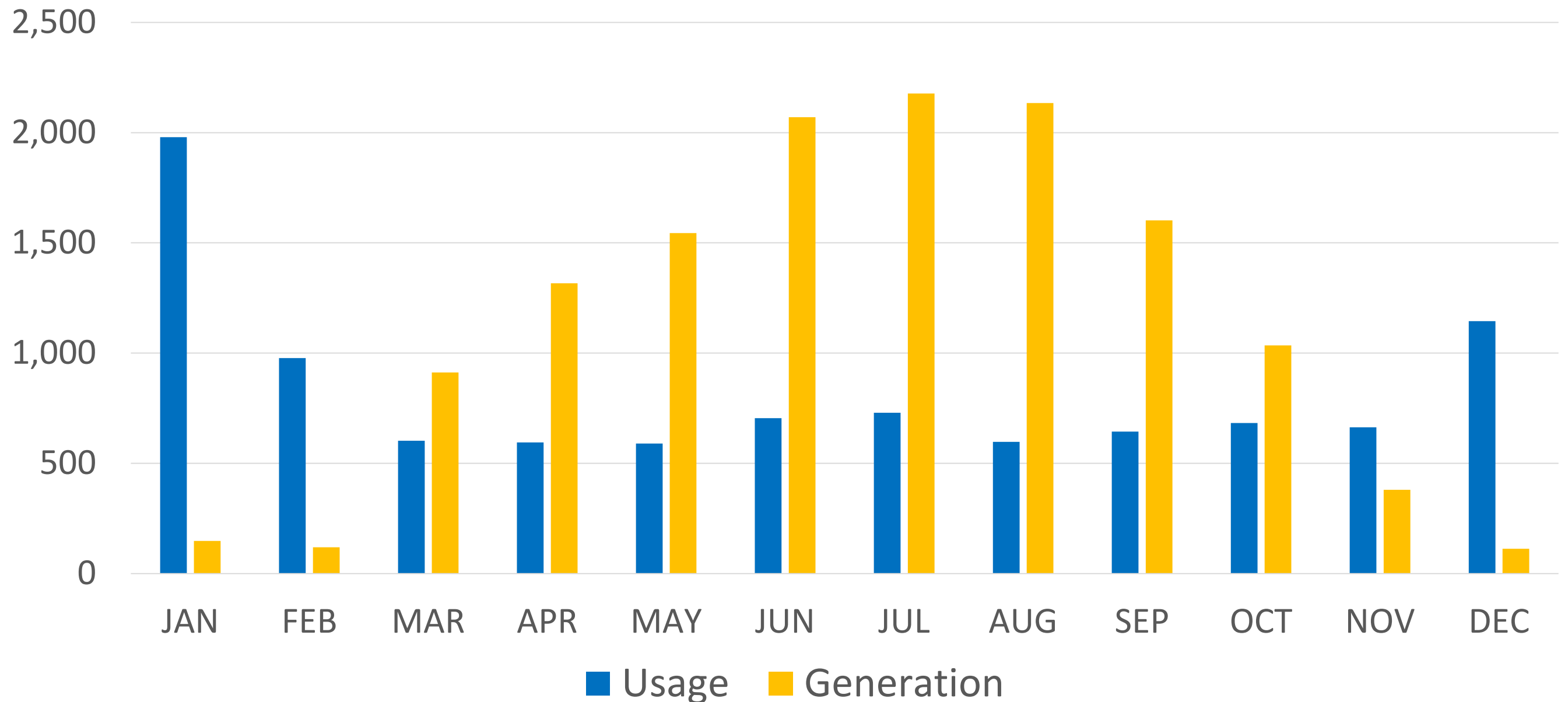
In June (best month), 56% of usage was from solar, 44% from the grid.

Own Use? Mostly Not



In Dec (worst month), 4% of usage was from solar, 96% from the grid.

Annual Usage and Generation



- Member earned enough credit to offset 100% of energy charges for the year.
- Only 27% of usage was from solar produced onsite, 73% of usage was from the grid.
- Only 21% of generation was used onsite, 79% was excess sent to the grid.

VEC Net Metering Facts

- **An ideally-sized net metering system produces only about a quarter of its own power, the other 75% is supplied by the grid.**
- **A significant portion of VEC's fixed operating costs are embedded in the energy charge rather than the customer charge; therefore, net metering members are underpaying for the service they receive.**
- **Current net metering rate of ~14 cents is higher than what we would agree to pay for a solar power purchase agreement.**
- **Since VEC is a not-for-profit, member-owned utility, any costs incurred by the co-op are borne by its members.**

Thank you

