



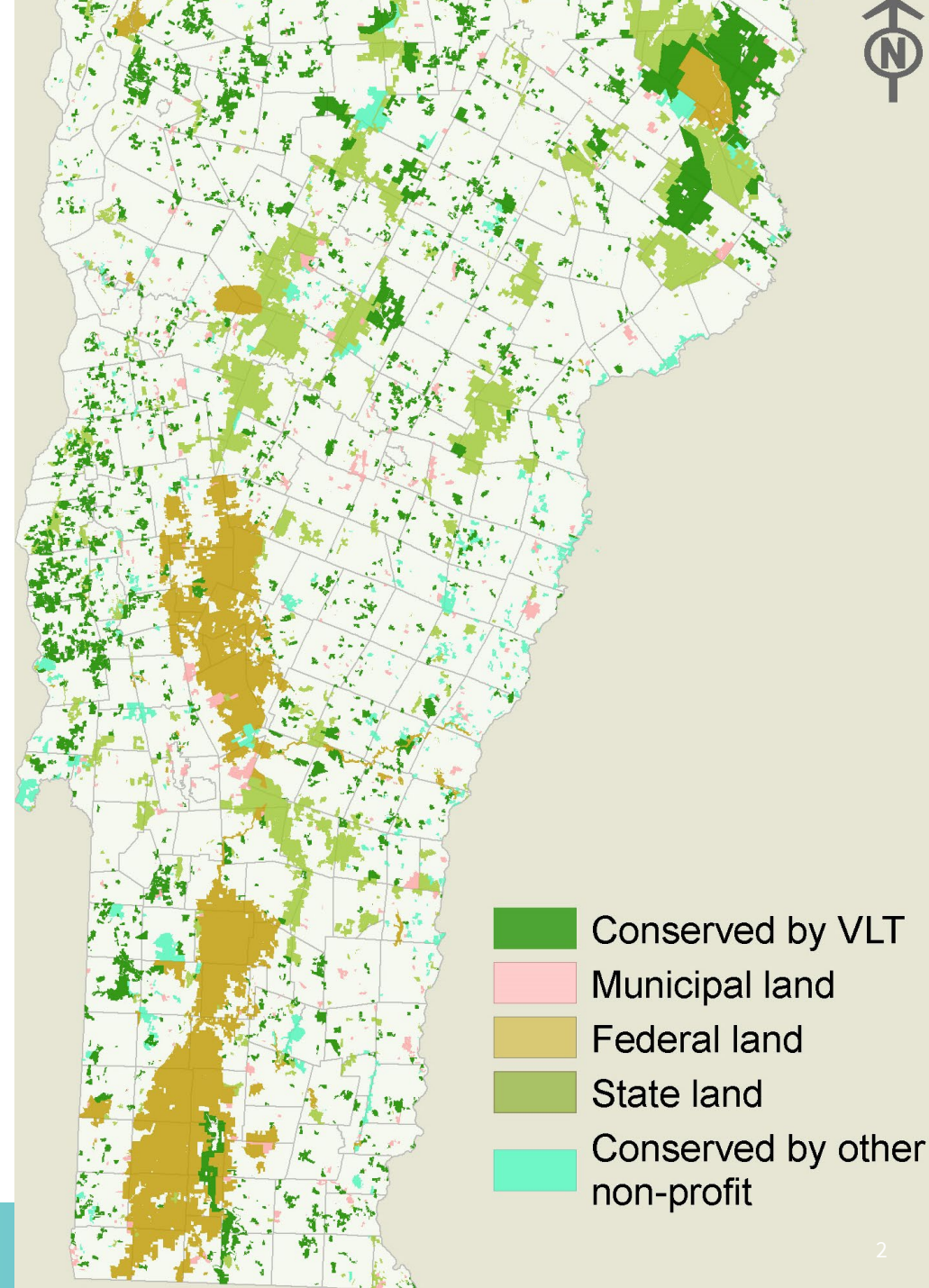
VHCC Day 2025

Abby White
Vice President for Engagement
February 14, 2025



About the Vermont Land Trust

- Founded in 1977
- Conserved 11% of Vermont, over 647,000 acres
- Protected 1,100+ farms and 450,000 acres of forestland
- Steward 2,300 easements
- Own 44 properties
- 3,100 members
- 47 employees
- FY25 Operating Budget: \$7.8M
- 5 offices: Montpelier, Richmond, Newport, Woodstock, Brattleboro





What we do

Help people and communities

- Protect land
- Care for land
- Connect to land



How we do it

- Conservation easements
- Stewardship
- Land ownership
- Ecological restoration
- Forestry and land management
- Farmland access
- Events, storytelling, and education



Lucas Dairy Farm, 390 acres, Orwell

2024 Highlights

- 8,773 acres protected
 - 6,300+ acres of forestland
 - 2,400 acres of farmland
- Helped 7 farm families buy land
- Protected 38 miles along rivers and 248 acres of wetlands
- Planted 7,770 trees and shrubs
- Hosted 1,000+ people at educational events

Community resilience programs

- Forestland conservation
- Overlays and water quality protections
- Wetland and ecological restoration
- Soil health
- Landowner services/education



VLT-owned land, Andover

Opportunities to improve water quality

- Section 10 of Capital Budget
- \$2.8M for land conservation and ag water quality
- Since 2019: 80 miles of buffers added on farms and 1,400 acres of wetlands protected (VHCB)



Blue Ledge Farm, Leicester

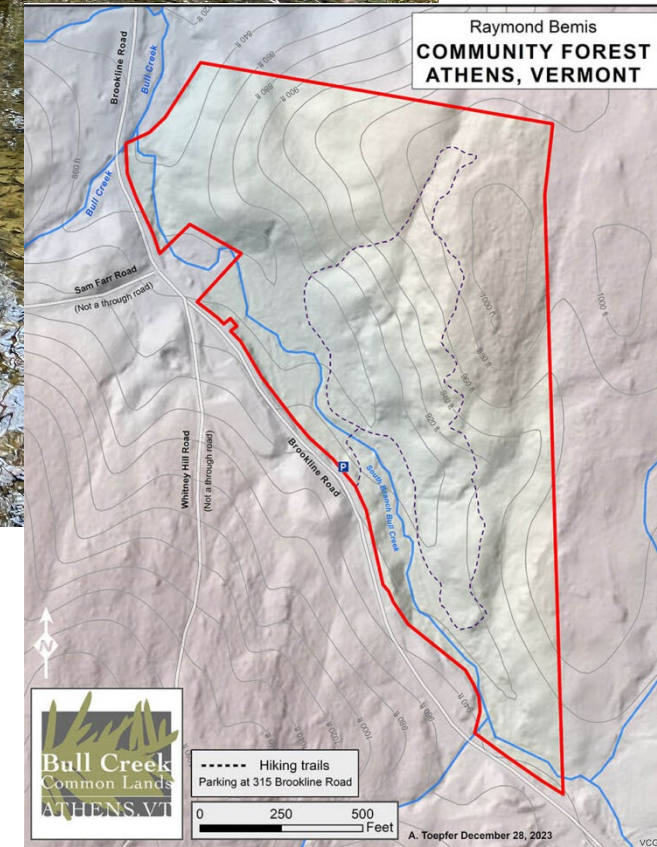
Valley Dream Farm, Cambridge

- 360-acres conserved in 1992 by the Tisbert family, funded by VHCB.
- Diversified organic veggies and flowers
- Farm store and events
- Hosts bike trials
- Enhanced protections on 64 acres added in 2023, funded by DEC



Athens Community Forest

- 36 acres conserved in 2023
- Contains ½ mile of Bull Creek
- Flood prevention; wetland, vernal pool, & floodplain forest protection
- Short walking trail, proximity to Windmill Ridge trail network
- Funded by VHCB, Davis Conservation Foundation, Fields Pond Foundation, Windham Foundation



Camp DREAM, Fletcher

- 50 acres conserved in 2003, island added in 2024
- Serves 800 kids per year
- Free for kids who wouldn't otherwise have access
- Protection of shoreline, wetlands, wildlife habitat on Metcalf Pond
- Funded by VHCB



Vermont Land Trust



UNITING LAND AND LIVES

abby@vlt.org