

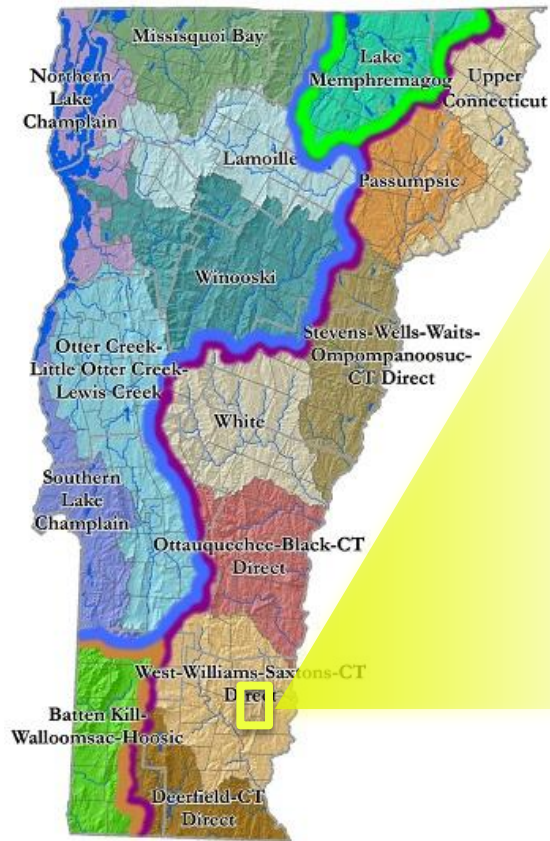


Bull Creek Headwaters

Athens and Townshend, VT

BullCreekCommonLands

341 acres of headwater forests and
wetlands conserved with VHCB
funding in November 2025



Statewide Context and Impact

Bull Creek → Saxtons River → Connecticut River

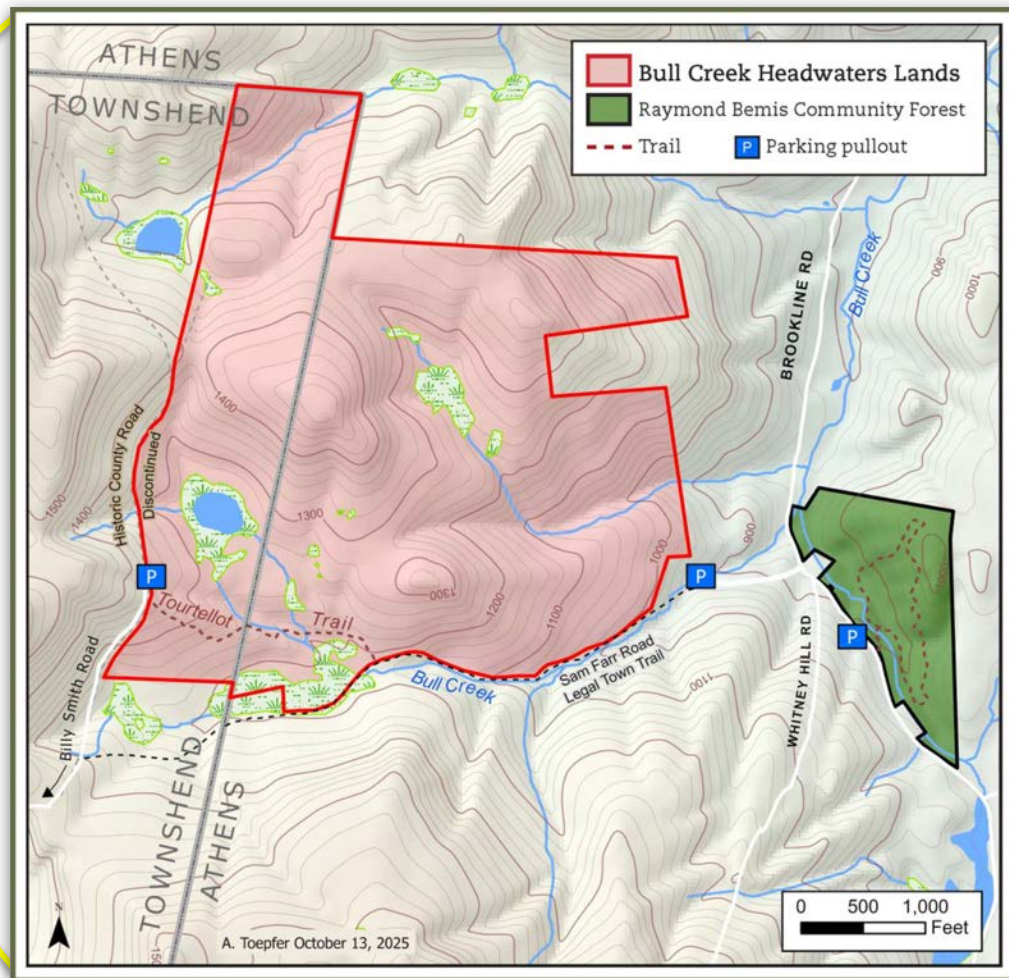
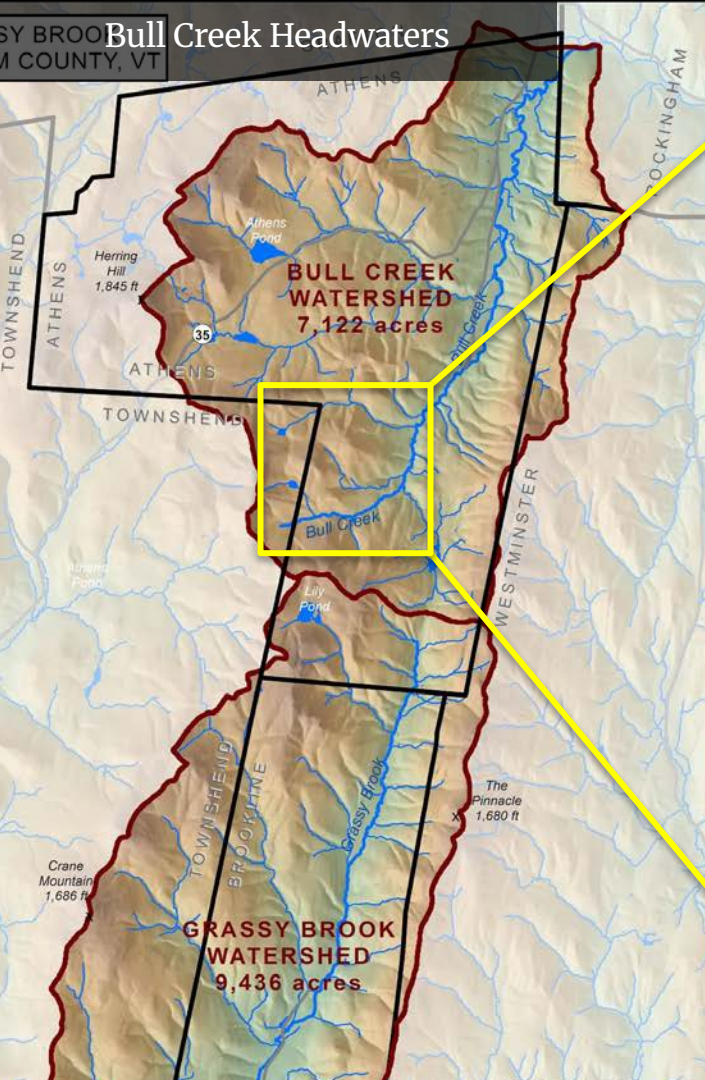
Southeastern Vermont is underrepresented in conserved land

TNC focal area “Southern Greens to Whites”

Vermont Conservation Design:

- Highest Priority Interior Forest Block
- Highest Priority Connectivity Block
- Highest Priority Surface Water and Riparian Areas
- Riparian Connectivity

State and federally listed Rare and Endangered Species





Community Impact

Securing public access for everyone, for exploration, solitude, recreation, and hunting



The Bull Creek Common Lands Board of Directors

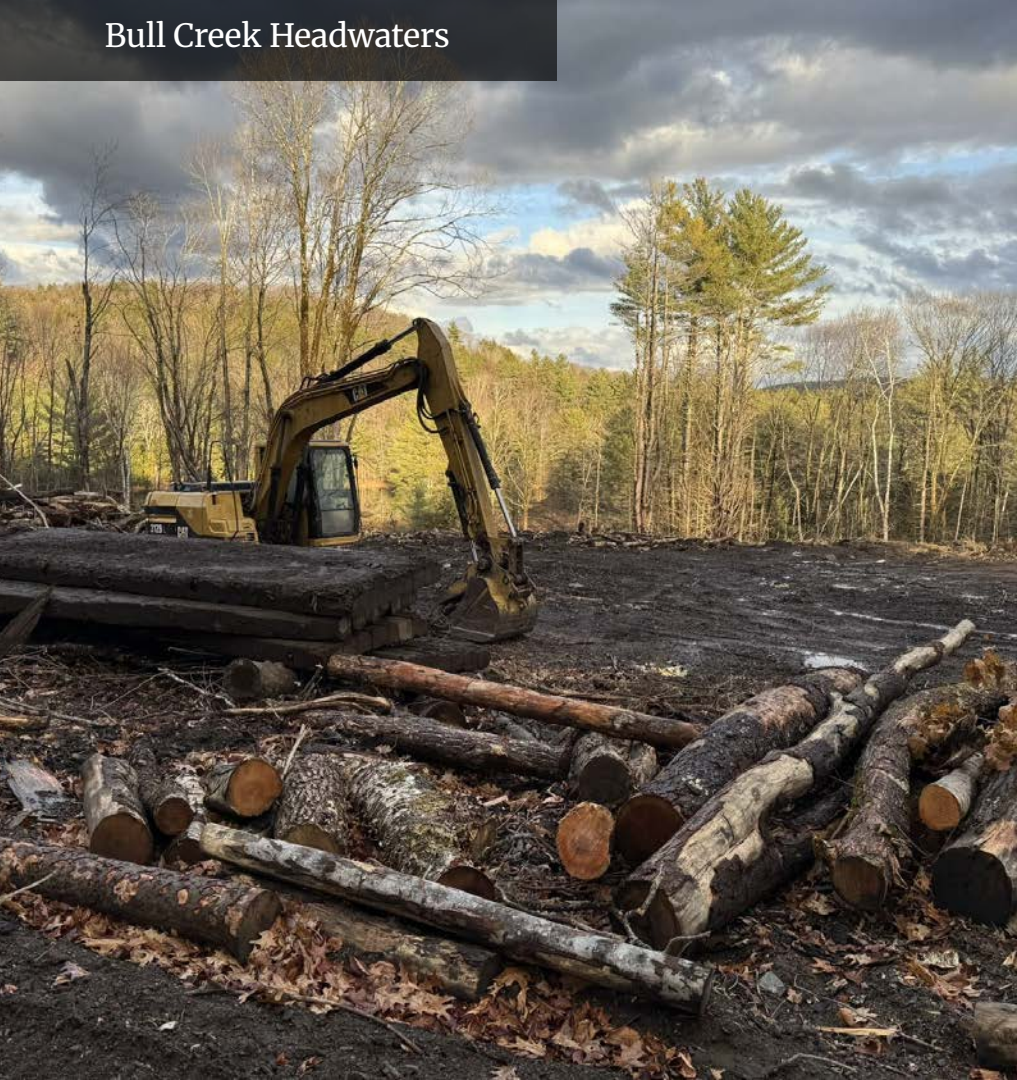


Community Impact

Connecting old roads via a new, half-mile section of hiking trail

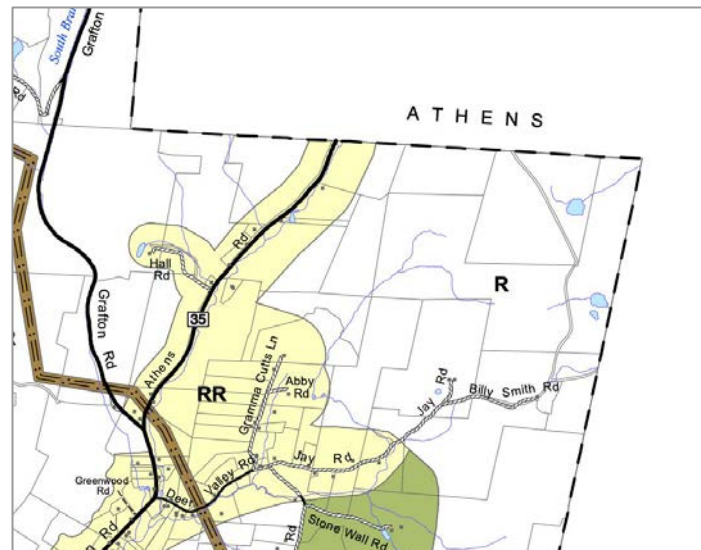


All types of hikers on the old roads! (↑ Moose)



Community Impact

Aligning with town, regional,
and statewide land use planning



Averting a trophy house and forest fragmentation



Community Impact

Restoring soil, water, forests,
and healthy ecosystems



NRCS supported skid road restoration



Community Impact

Helping the land help us —
Flood and climate resilience



Wetlands and buffers that can hold and slow flood waters



Community Impact

Preserving historic landmarks and archeological sites



Remnants of the Tourtellot family homesteads



Community Impact

Protecting the intrinsic value of wild spaces so interconnected life can flourish

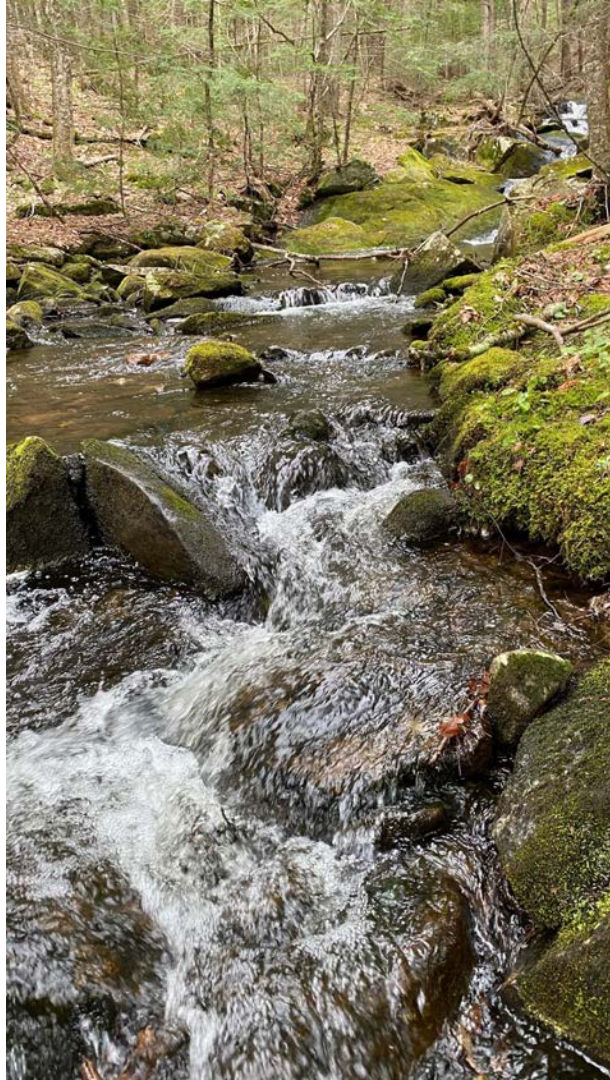


Rose pogonias blooming in a small fen

Bull Creek Headwaters



BullCreekCommonLands.org



Thank you!