

Act 33 of 2025 Building and General Services Section 2 Update

*Vermont Department of Buildings and
General Services*

Wanda L. Minoli, Commissioner
Joe Aja, *Director*
Design & Construction

January 8, 2026



Statewide: Major Maintenance

Performs large repairs and major system replacements in state-owned buildings.

BGS is responsible for approximately 240 buildings statewide including:

- General Office Space
- Courthouses
- Correctional Facilities
- Mental Health Care Facilities
- Laboratories
- Public Safety Facilities
- The State House

Appropriations and Expended	
FY2024 Bond	\$8,001,244
FY2025 Bond	\$8,501,999
FY2026 Bond	\$6,493,401
FY2026 Cash	\$1,506,599
Total	\$24,503,243
<i>Expended</i>	<i>\$21,505,592</i>
Balance	\$2,997,651



Statewide: Planning, Reuse and Contingency

Used for planning to evaluate varying levels of investment in facilities such as an alternatives analysis. Funds modifications for the reuse or repurposing of existing space. Provides contingency funding to ensure existing projects can continue in case of unforeseen construction overruns.



Appropriations and Expended	
FY2024 Bond	\$250,000
FY2024 Cash	\$400,000
FY2025 Bond	\$250,000
FY2025 Cash	\$250,000
FY2026 Cash	\$250,000
Total	\$1,400,000
<i>Expended</i>	<i>\$756,870</i>
Balance	\$643,130

Statewide: 3 Acre Stormwater Compliance

Project Scope: Three-acre sites owned by BGS include eight sites within the Lake Champlain and Memphremagog watersheds which do not meet the requirements in the Vermont Clean Water Act. Sites include:

- Central Services – Middlesex
- Capital Complex – Montpelier
- Department of Labor – Montpelier
- Northern State Correctional Facility – Newport
- Criminal Justice and Fire Service Training Center – Pittsford
- Northwest State Correctional Facility – St. Albans
- Northland Job Corps – Vergennes
- Waterbury State Office Complex



Appropriations and Expended	
FY2023 ARPA	\$600,000
FY2024 Bond	\$1,500,000
FY2025 Bond	\$1,500,000
FY2026 Bond	\$1,500,000
Total	\$5,100,000
<i>Expended</i>	\$388,746
Balance	\$4,711,254

Rutland: Asa Bloomer Building - Roof Repair and Sewage System Upgrades

- Before the buildings were constructed there were two brooks that came together.
- Box sewer running under the basement slab.
- Combined storm and sewer from other buildings.
- A mix of materials, cast iron, PVC, stone, marble, vitrified clay and concrete.
- High flows flood into the basement.
- Excavate and replace the box sewer and associate drainpipes entering the box sewer.
- The roof and skylight are beyond their lifecycle and need to be replaced.



Appropriations and Expended	
FY2020 Bond	\$250,000
FY2021 Bond	\$250,000
FY2022 Bond	\$400,000
FY2023 Bond	\$1,575,000
FY2026 Bond	\$1,500,000
Total	\$3,975,000
<i>Expended</i>	<i>\$3,975,000</i>
Balance	\$0

Multimodal Garage Renovation

- State and public parking.
- Wear and tear, and exposure to deicing chemicals is cracking and spalling the concrete.
- Repair failed concrete areas.
- Temporary shoring has been installed at the ramp to the first-floor deck.



Appropriations and Expended	
FY2023 Bond	\$600,000
FY2026 Bond	\$600,000
Total	\$1,200,000
<i>Expended</i>	<i>\$1,100,000</i>
Balance	\$100,000

Print and Postal Uninterruptable Power Supply Upgrade

- Digital printing, expedited legislative printings, lease copier services, and secure mailing services.
- Machines valued over \$2,900,000.
- Power outages can cause damage to the control boards and hard drives.
- UPS will allow machines to be shut down correctly or be protected until the generator is operating.



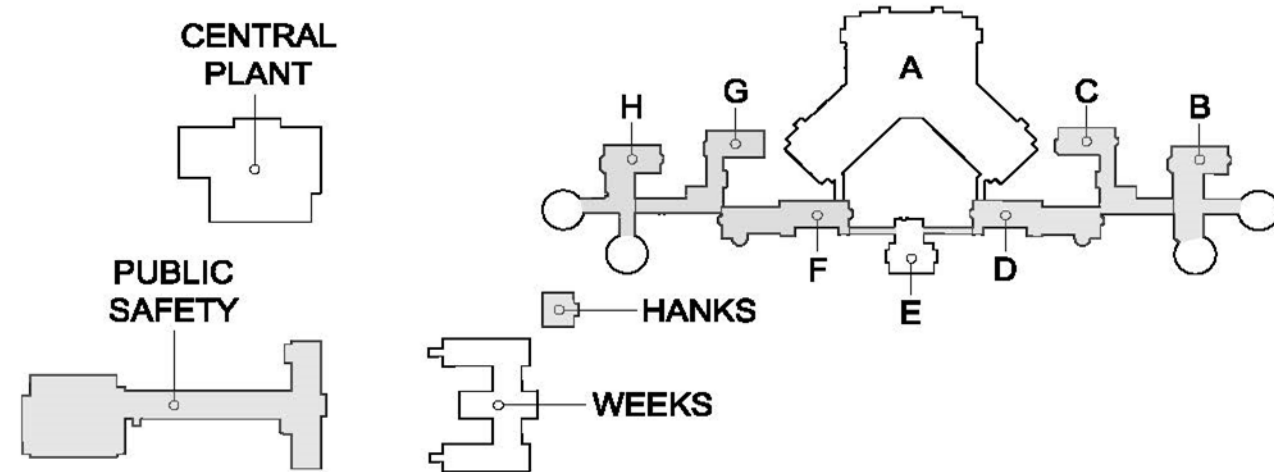
Appropriations and Expended	
FY2025 Bond	\$0
FY2025 Cash	\$0
FY2026 Bond	\$58,279
FY2026 Cash	\$250,000
Total	\$308,279
<i>Expended</i>	<i>\$0</i>
Balance	\$308,279

State Office Complex Historic Core Roof Replacements

- Replace the remaining slate roofs on eight buildings and connectors.
- Slates are to old repair.
- To reduce ice damage to the slate, increase copper flashing.



Appropriations and Expended	
FY2022 Bond	\$1,000,000
FY2023 Bond	\$3,200,000
FY2026 Bond	\$2,000,000
Total	\$6,200,000
<i>Expended</i>	<i>\$3,538,481</i>
Balance	\$2,661,519



32 Cherry St, Parking Garage Repairs

- Two sections to the garage, constructed in 1968 and 1992.
- Repair the damaged concrete caused by years of deicing chemicals.
- Design development drawings are in review with the Construction Manager and BGS.
- Construction to be coordinated with Judiciary due to the noise and access required to the garage.

Appropriations and Expended	
FY2023 Bond	\$565,000
FY2024 Cash	\$135,000
FY2025 Bond	
FY2025 Cash	\$2,300,000
FY2026 Bond	\$1,500,000
Total	\$4,500,000
<i>Expended</i>	<i>\$2,799,203</i>
Balance	\$1,700,797

